

Moon

Brenda Gutierrez and
Yusuf Ahmed

Questions

What geological features are present? How did they form?
How old are they relative to each other and how do you
know that?

Image 1

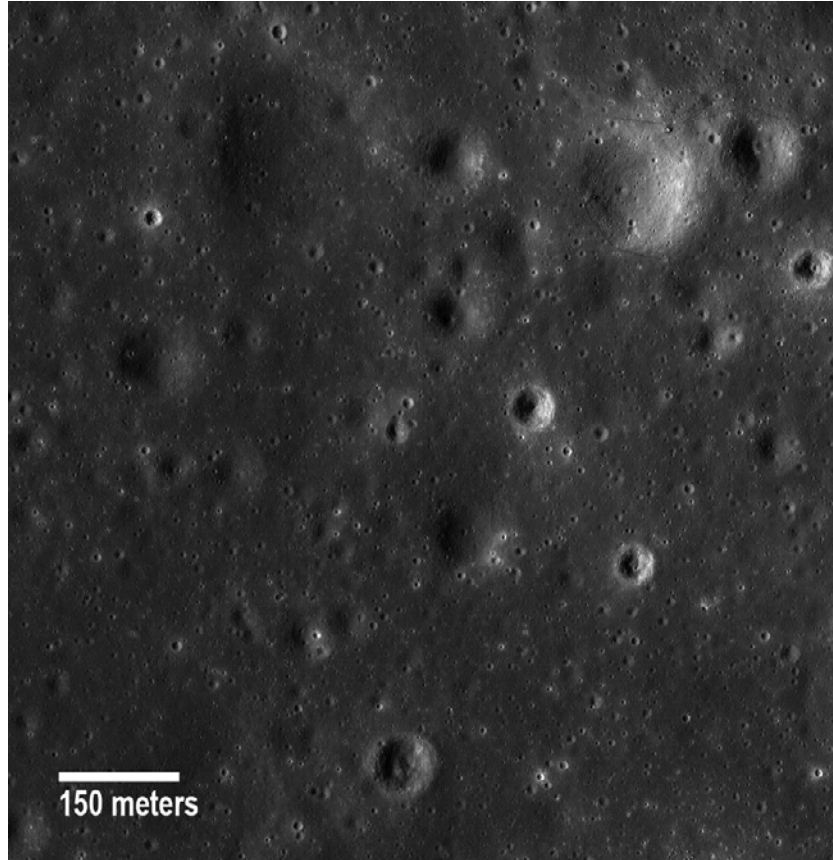


Image 2

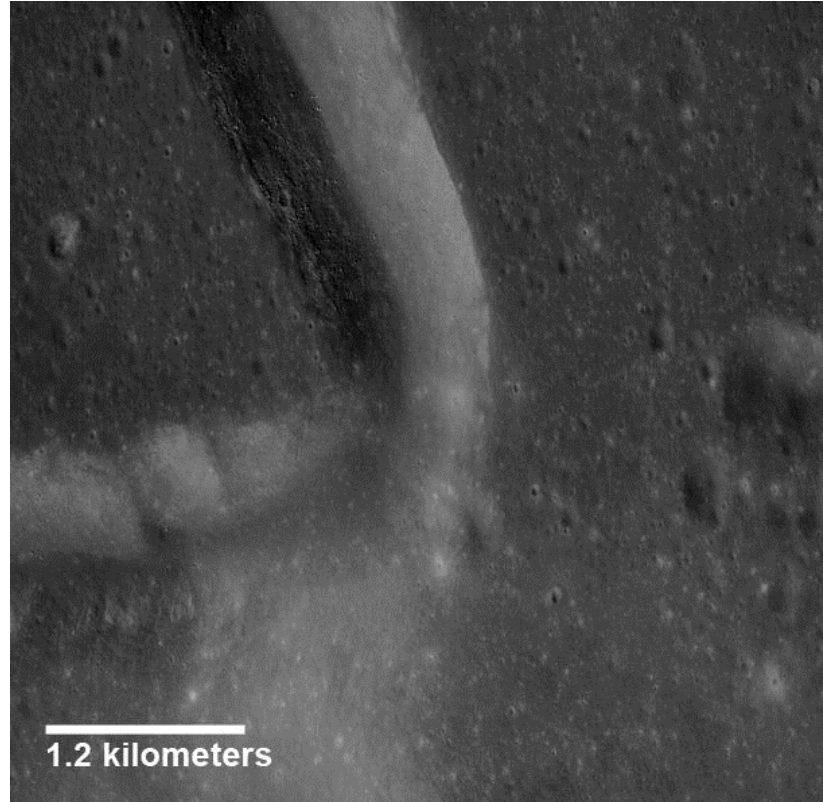


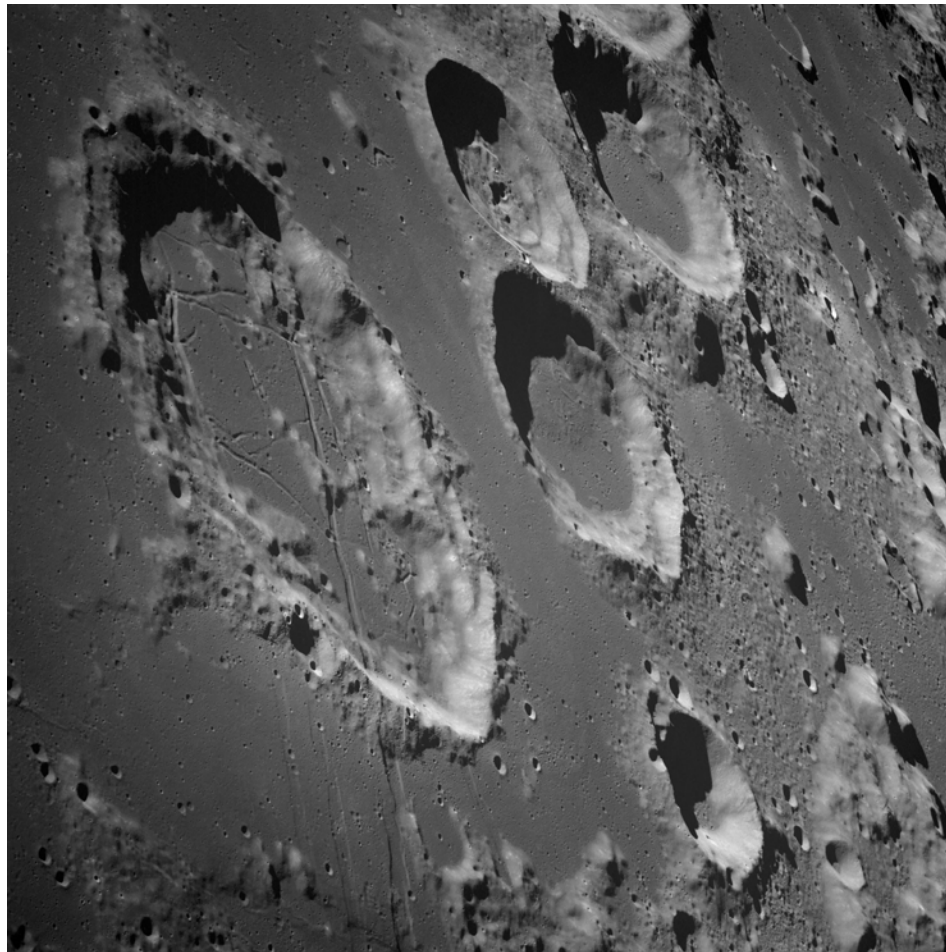


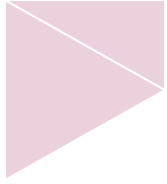
Image 3



Image

Crater

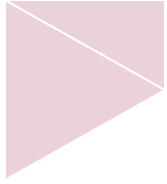




Image

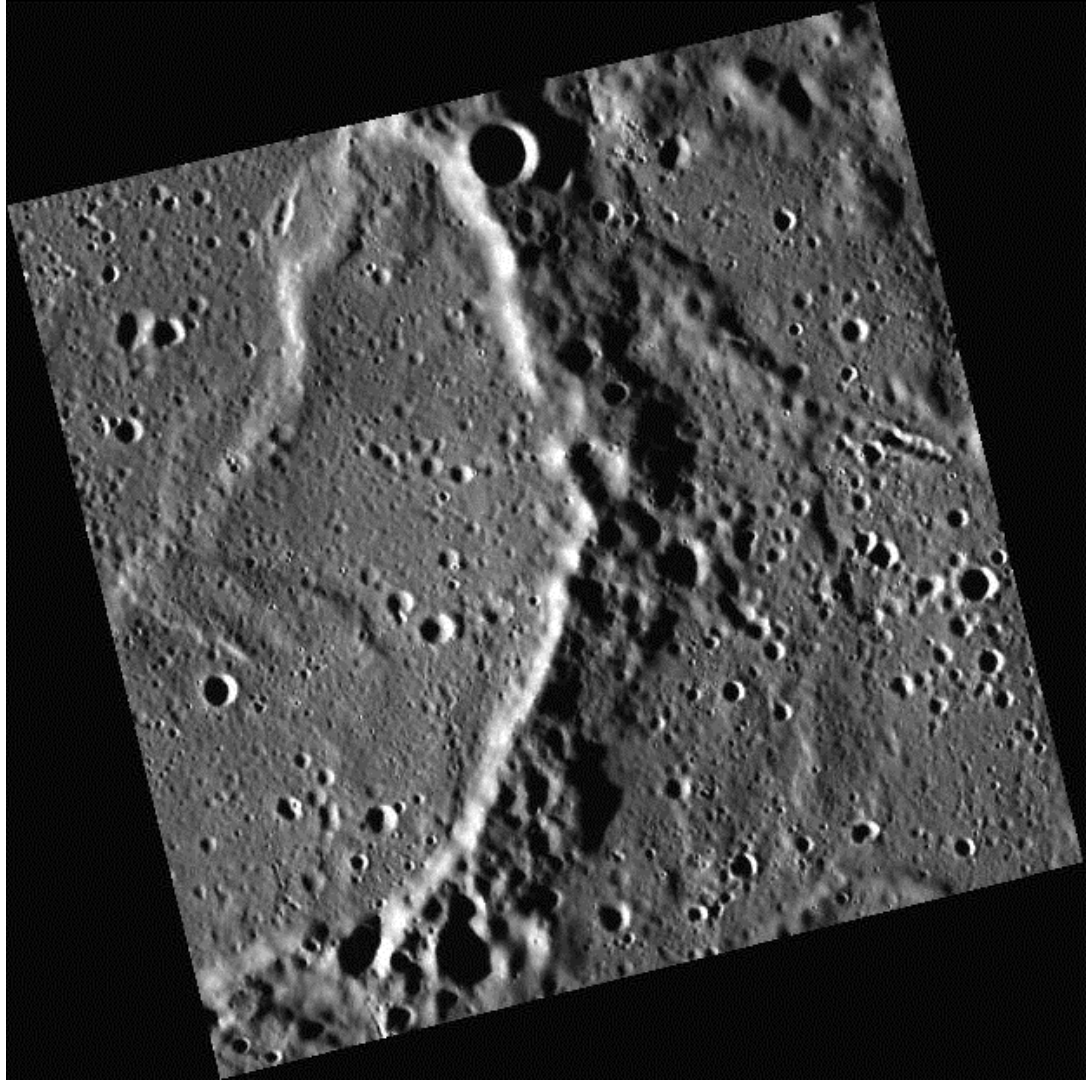
Crater

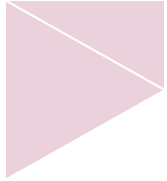




Image

Wrinkle Ridge

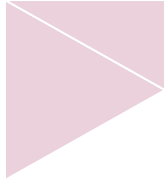




Image

Crater and
Rilles

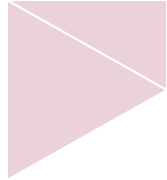




I mage

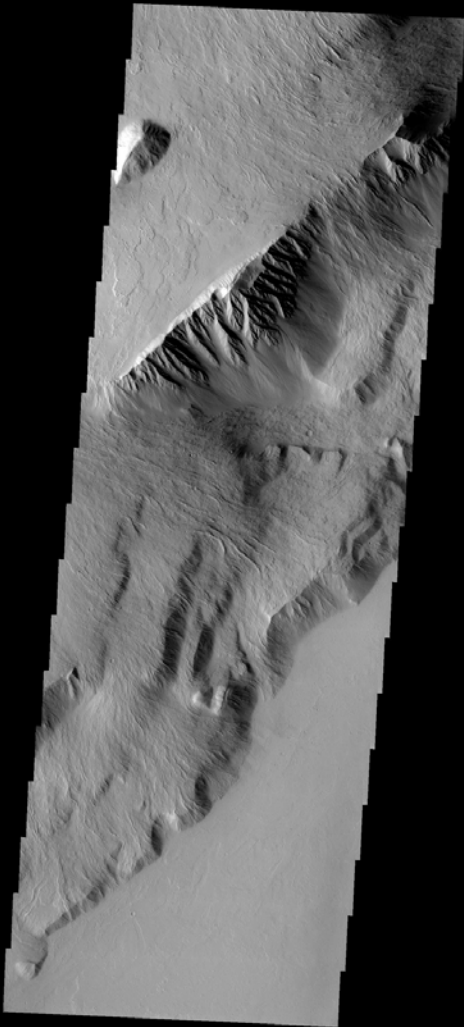
Rupe

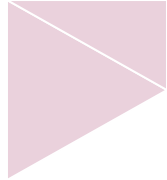




Image

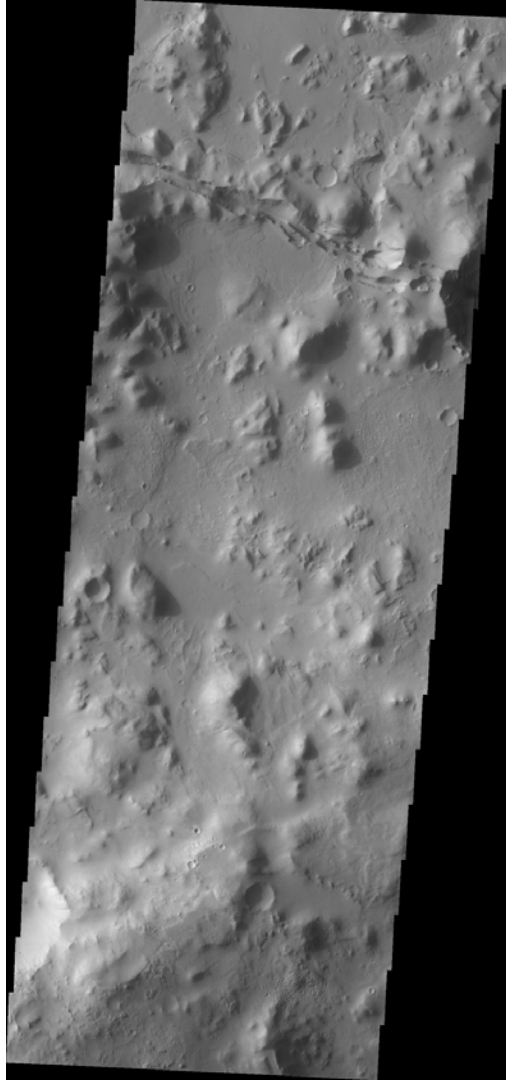
Mons

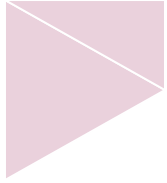




I mage

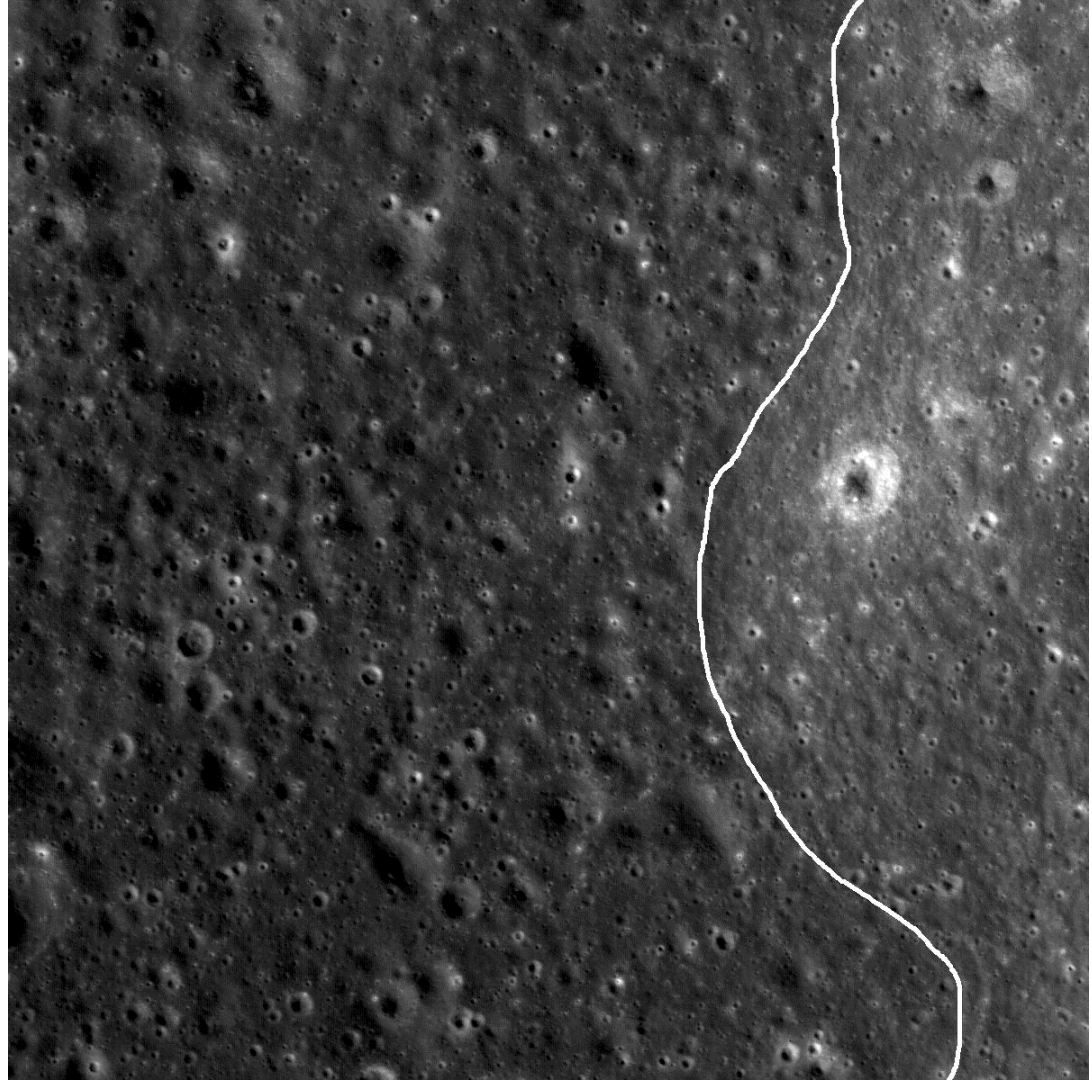
Montes





Image

Hghland and Maria
boundary





Image

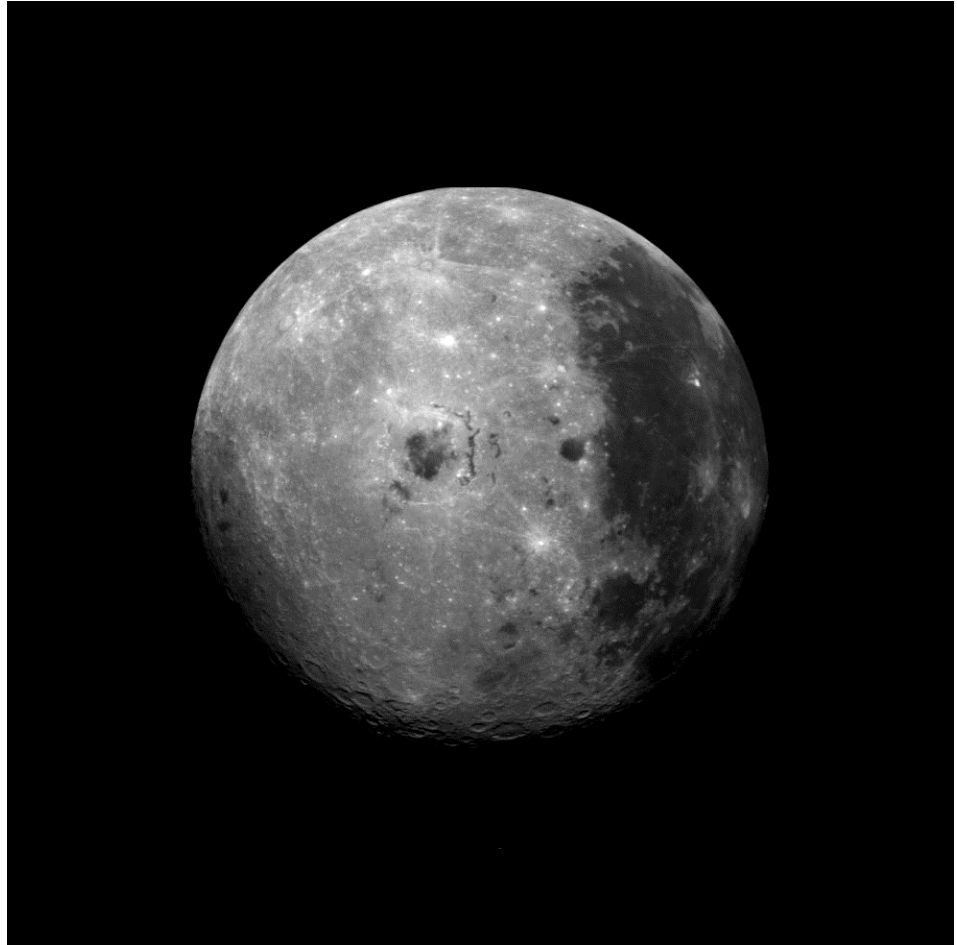
Near
Side





Image

Far Side



Citations

Impact Cratering - lpi.usra.edu. (n.d.). Retrieved October 21, 2016, from

http://www.lpi.usra.edu/exploration/education/hsResearch/moon_101/ImpactCratering.pdf

Student Guide to Moon 101 - Lunar and Planetary Institute. (n.d.). Retrieved October 21, 2016, from

http://www.lpi.usra.edu/exploration/education/hsResearch/moon_101/StudentGuide

<https://drive.google.com/file/d/0B5atsssnADZ3NmlvWE1tX2ZaUEFzVEJnYXQtdG9sM19BVzFN/view>

Lunar Volcanism Notes - lpi.usra.edu. (n.d.). Retrieved October 21, 2016, from

http://www.lpi.usra.edu/exploration/education/hsResearch/moon_101/LunarVolcanism.pdf

PSRD: Time to Solidify an Ocean of Magma. (n.d.). Retrieved October 21, 2016, from

<http://www.psrhawaii.edu/Mar09/magmaOceanSolidification.html>

Moon 101 Lecture Series - Lunar and Planetary Institute. (n.d.). Retrieved October 23, 2016, from

<http://www.lpi.usra.edu/lunar/moon101/>

NASA Image and Video Library. (n.d.). Retrieved October 23, 2016, from <http://images.nasa.gov/>

NASA - Powerful Pixels: Mapping the "Apollo Zone" (n.d.). Retrieved October 23, 2016, from

<http://www.nasa.gov/topics/solarsystem/features/apollo-zone-map.html>