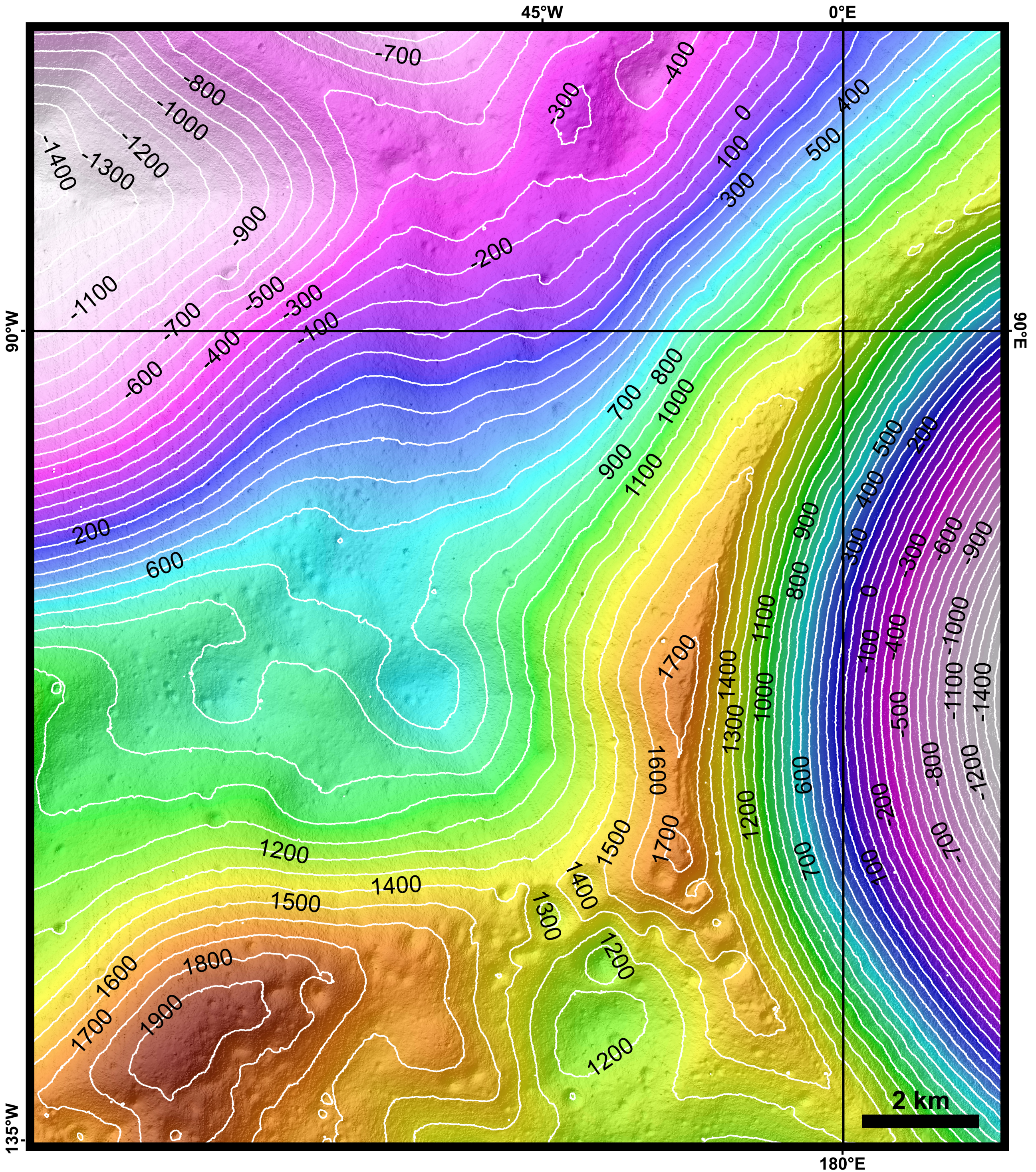


Topographic Contour Map of the Moon's South Pole Ridge

Polarstereographic Projection
Contours: 100 m



Data Sources:

Lunar Reconnaissance Orbiter Lunar Orbiter Laser Altimeter (LOLA)
5-m elevation product [NASA Goddard Space Flight Center] over
derived hillshade with solar azimuth 45°W and solar elevation 45°.
High elevation: red and orange; Low elevation: purple and white.