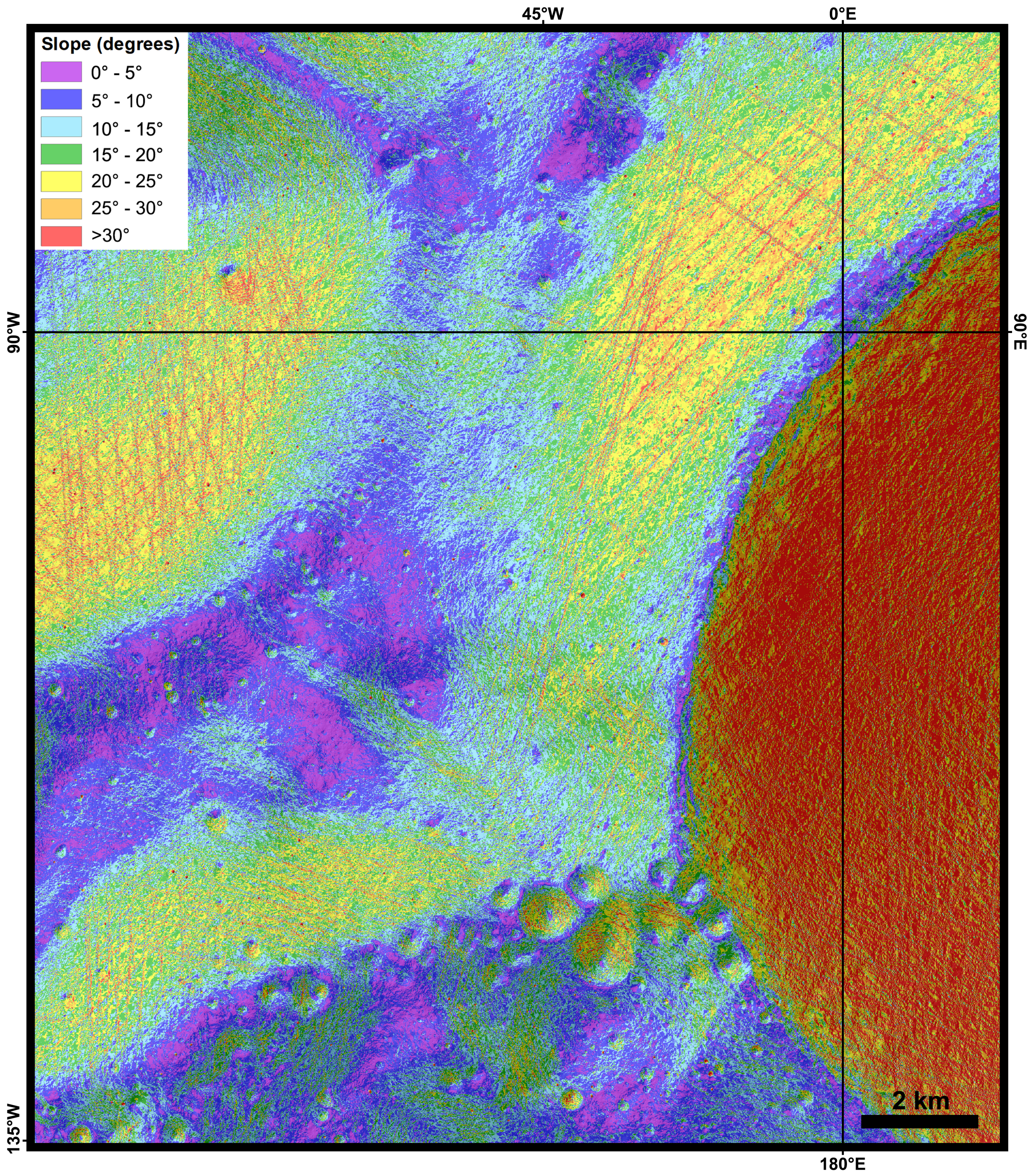


Slope Map of the Moon's South Pole Ridge

Polarstereographic Projection



Data Sources:

Slopes derived from Lunar Reconnaissance Orbiter Lunar Orbiter Laser Altimeter (LOLA) 5-m elevation product [NASA Goddard Space Flight Center] over derived hillshade with solar azimuth 45°W and solar elevation 45°.