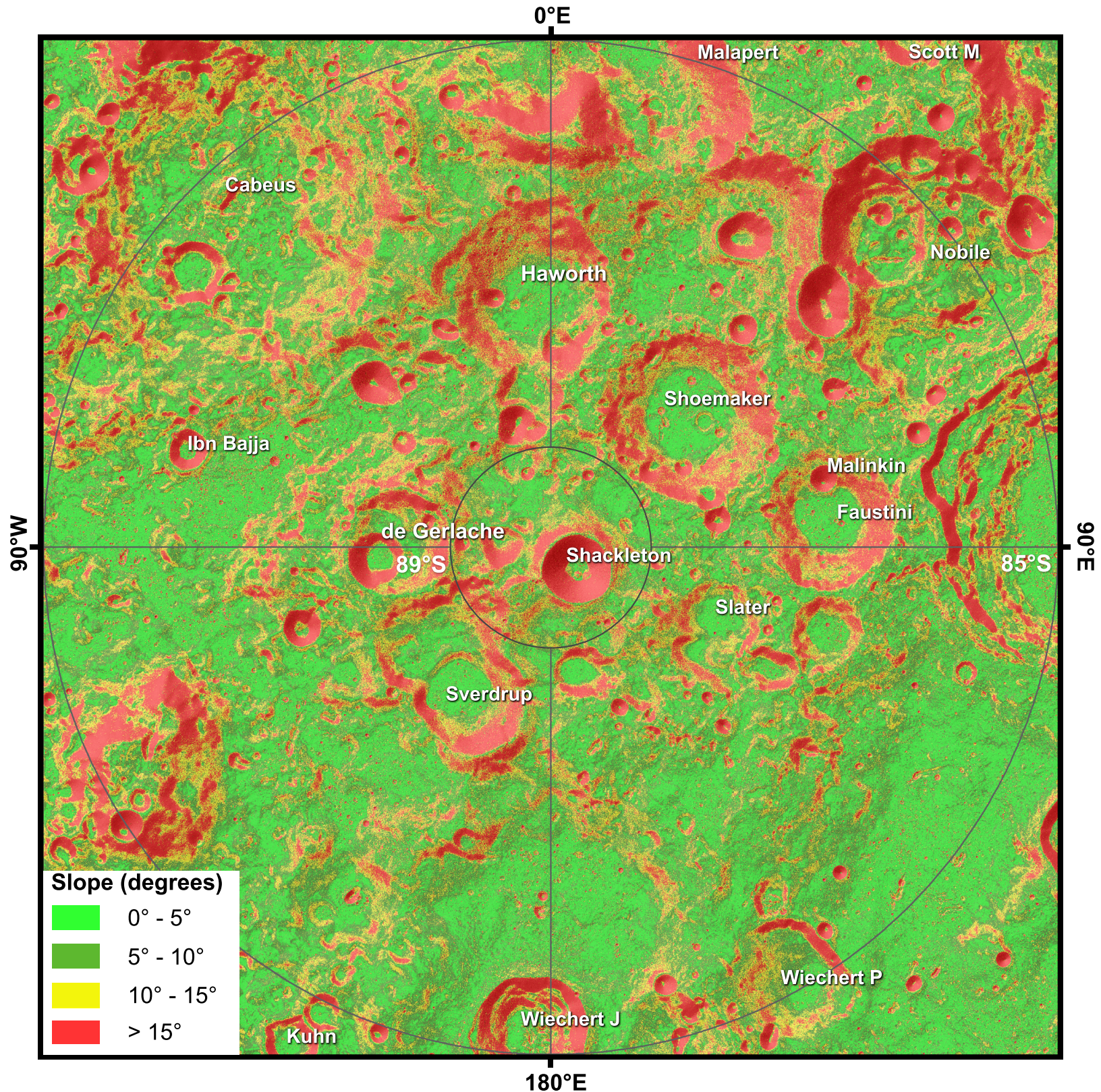


# Slope Map of the Moon's South Pole (85°S to Pole)

Polarstereographic Projection (scale true at pole)

Scale : 1:1,343,325



## Data Sources:

Slopes derived from Lunar Reconnaissance Orbiter Lunar Orbiter Laser Altimeter (LOLA) 10-m elevation product [NASA Goddard Space Flight Center] over derived hillshade with solar azimuth 45°W and solar elevation 45°.