



Characterization of Orientale Region and Basin

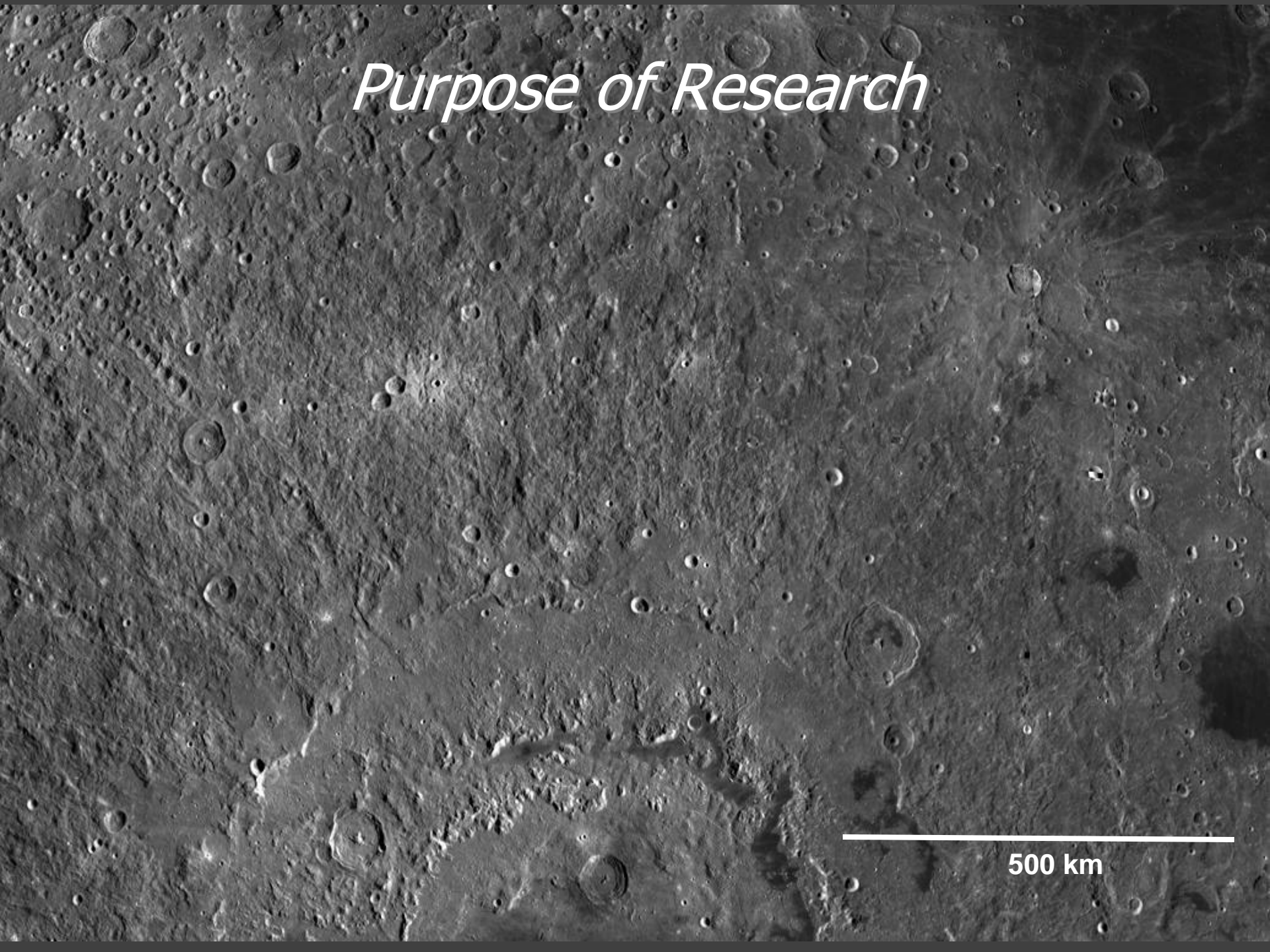
Tori Wilson, Austen Beason, Abby Delawder, and Cody Carroll

Kickapoo High School

Springfield, Missouri

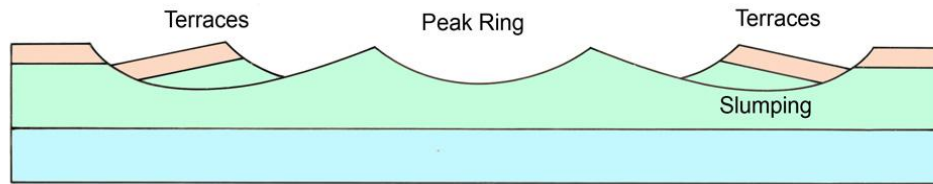
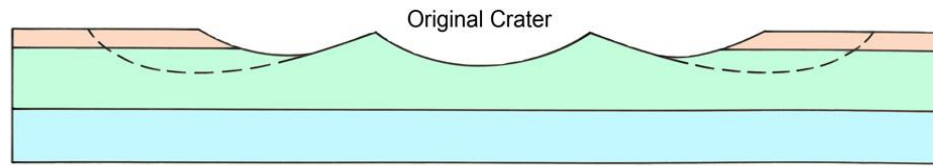
“We choose to go to the ‘Poo, not because it is easy, but because it is hard”

Purpose of Research



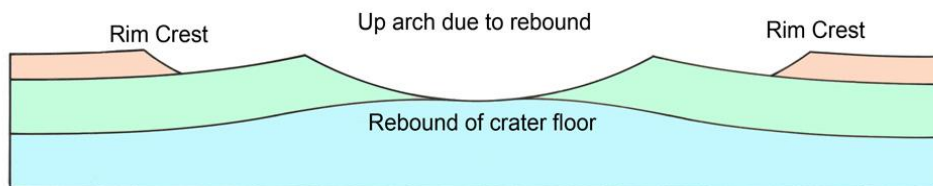
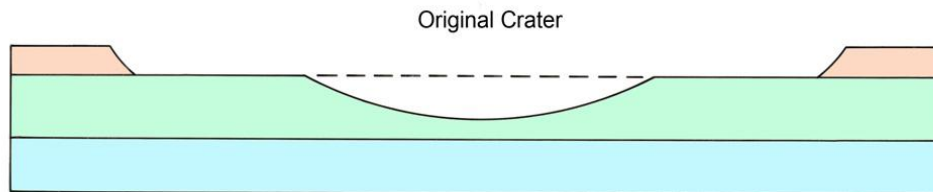
500 km

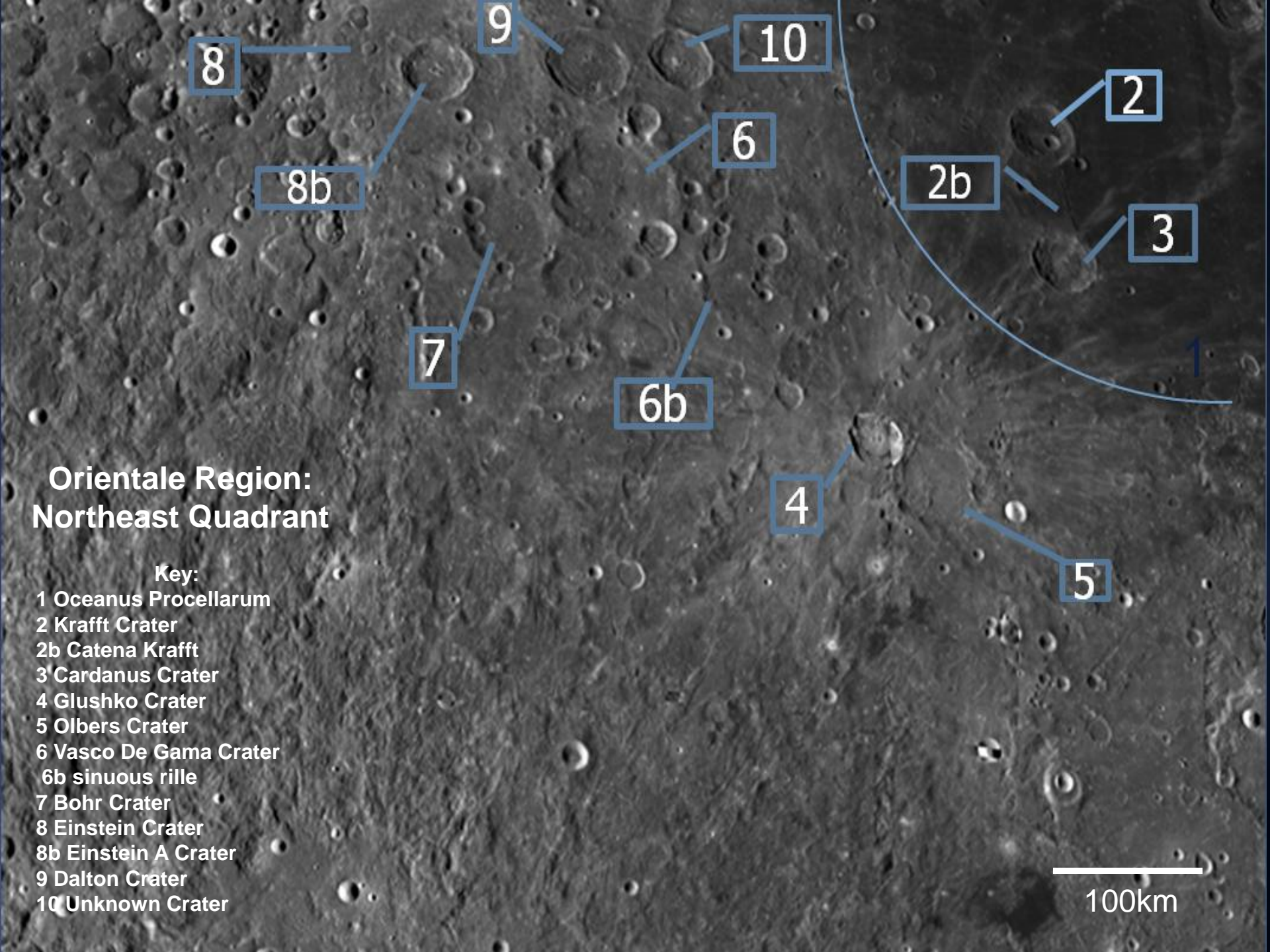
Formation of the Orientale Region and Basin



A. Megaterrace Model

B. Nested Crater Model





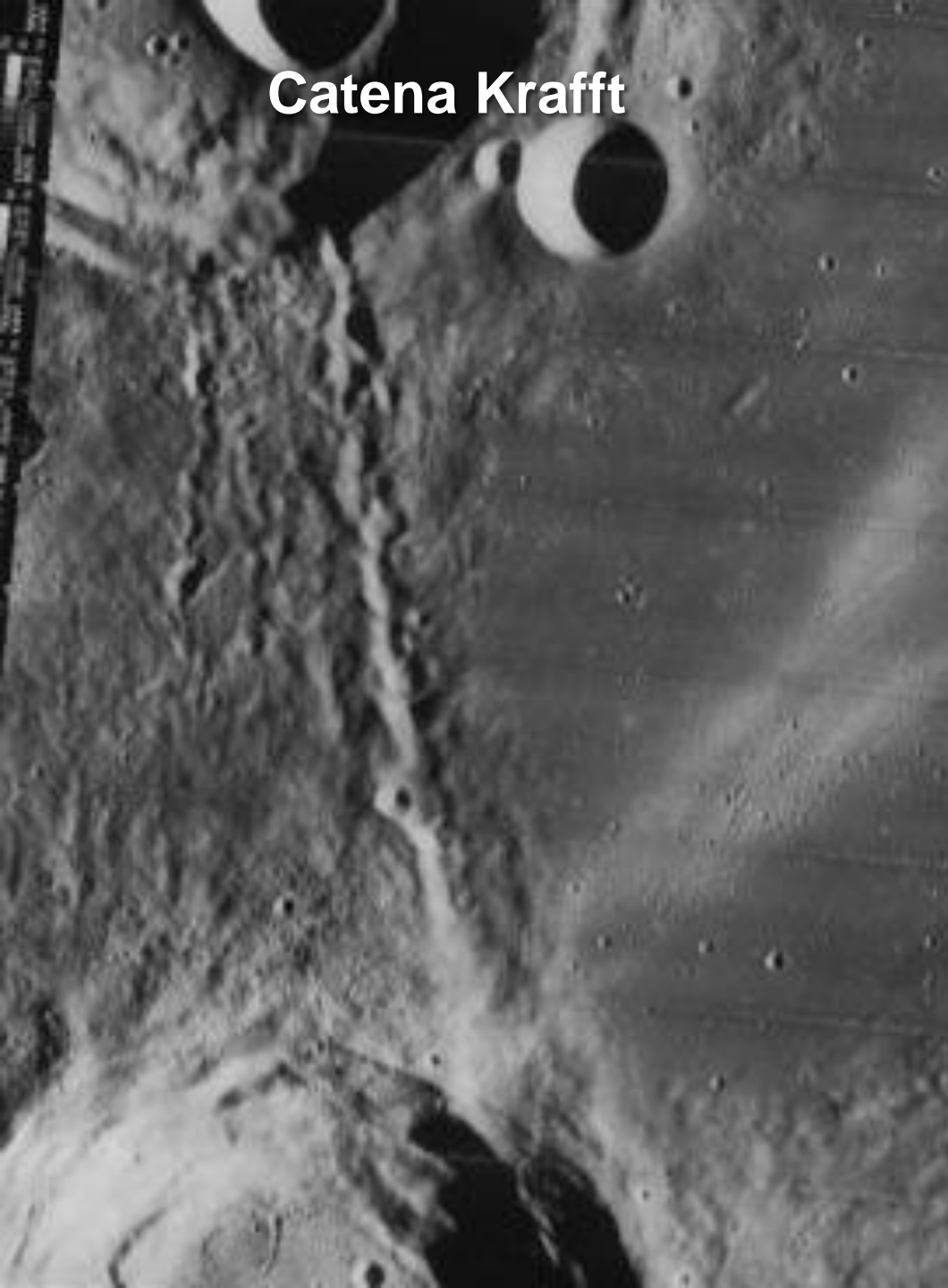
Orientale Region: Northeast Quadrant

Key:

- 1 Oceanus Procellarum
- 2 Krafft Crater
- 2b Catena Krafft
- 3 Cardanus Crater
- 4 Glushko Crater
- 5 Olbers Crater
- 6 Vasco De Gama Crater
- 6b sinuous rille
- 7 Bohr Crater
- 8 Einstein Crater
- 8b Einstein A Crater
- 9 Dalton Crater
- 10 Unknown Crater

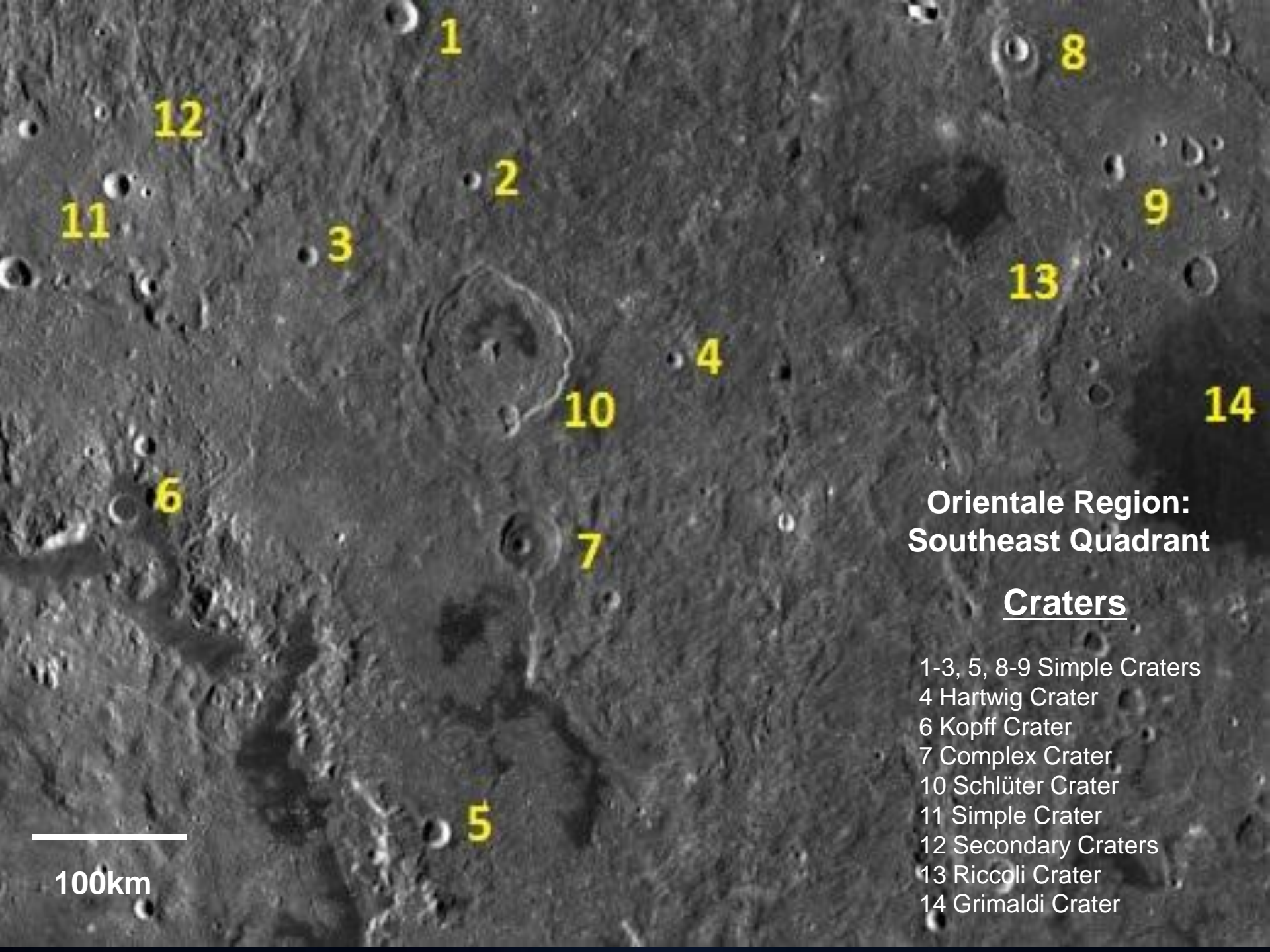
100km

Catena Krafft



Crater Krafft





**Orientele Region:
Southeast Quadrant**

Craters

- 1-3, 5, 8-9 Simple Craters
- 4 Hartwig Crater
- 6 Kopff Crater
- 7 Complex Crater
- 10 Schlüter Crater
- 11 Simple Crater
- 12 Secondary Craters
- 13 Riccoli Crater
- 14 Grimaldi Crater

100km

Oriente Region: Southeast Quadrant

Mountain and Lava Formations

- 15 Rille
- 16 Montes Rook and
Montes Cordillera
- 17 Lacus Autumni
- 18 Lacus Veris
- 19-22 Lava Flows

15

16

17

18

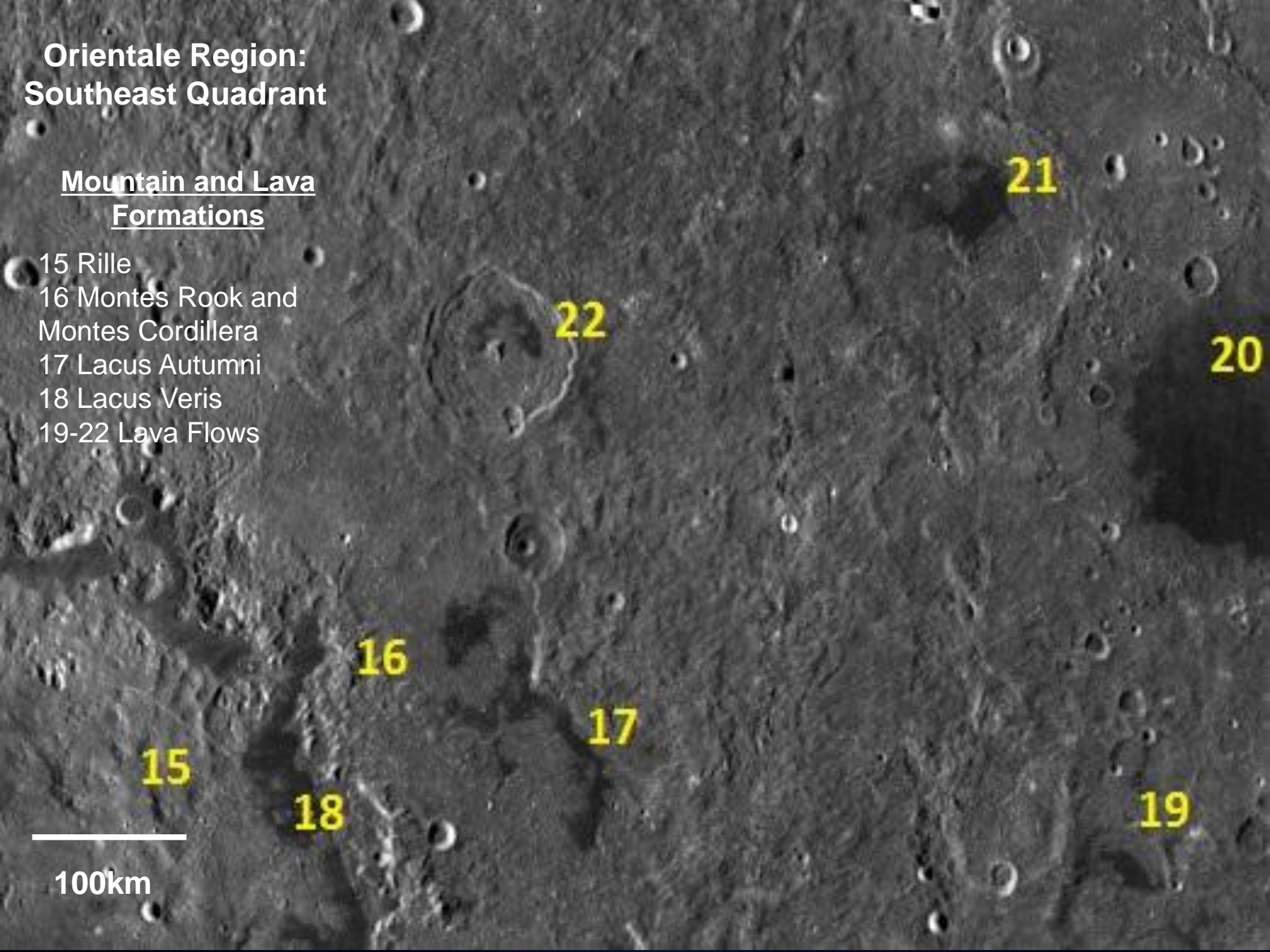
22

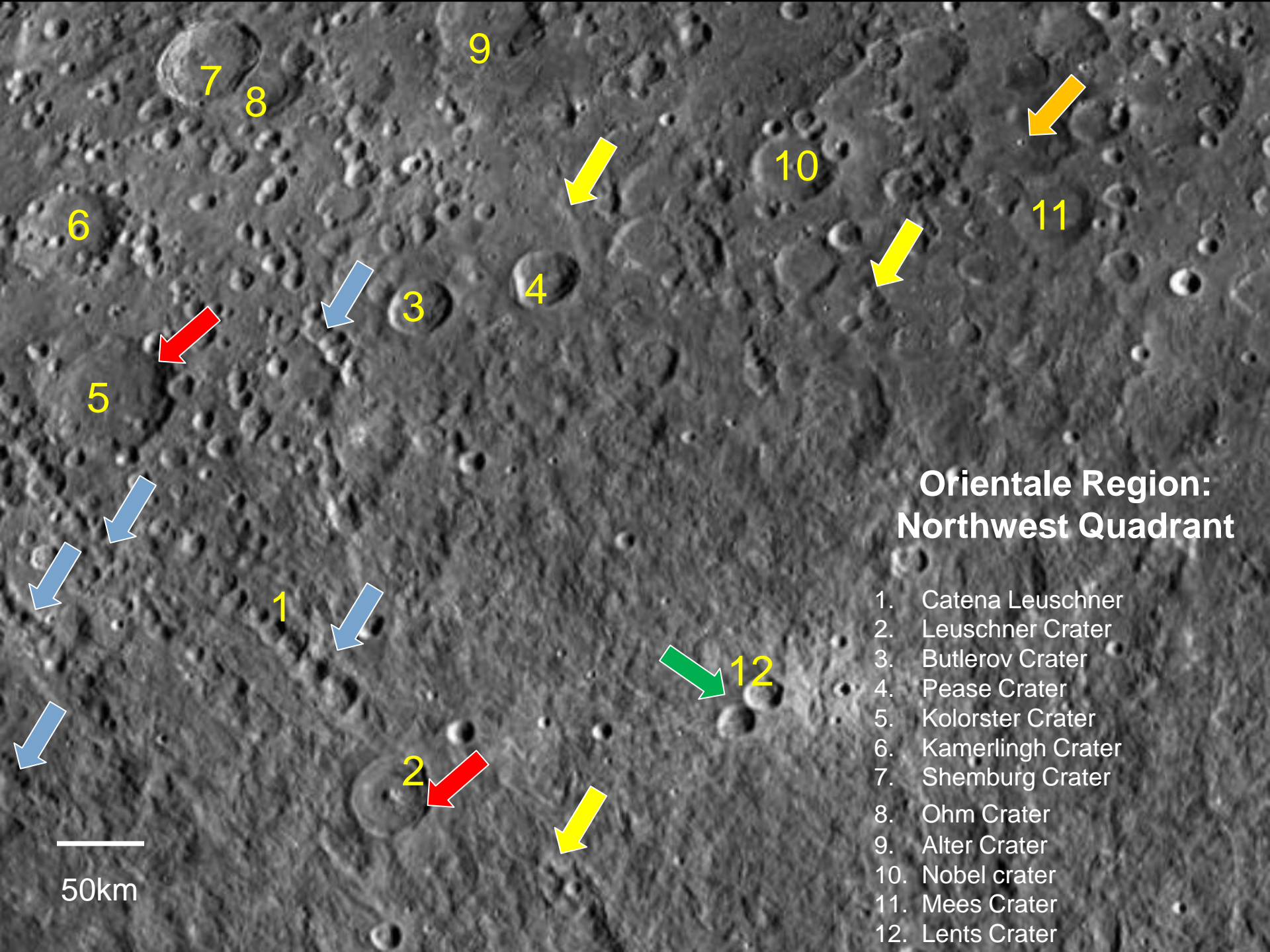
21

20

19

100km





Orientele Region: Northwest Quadrant

- 1. Catena Leuschner
- 2. Leuschner Crater
- 3. Butlerov Crater
- 4. Pease Crater
- 5. Kolorster Crater
- 6. Kamerlingh Crater
- 7. Shemburg Crater
- 8. Ohm Crater
- 9. Alter Crater
- 10. Nobel crater
- 11. Mees Crater
- 12. Lents Crater

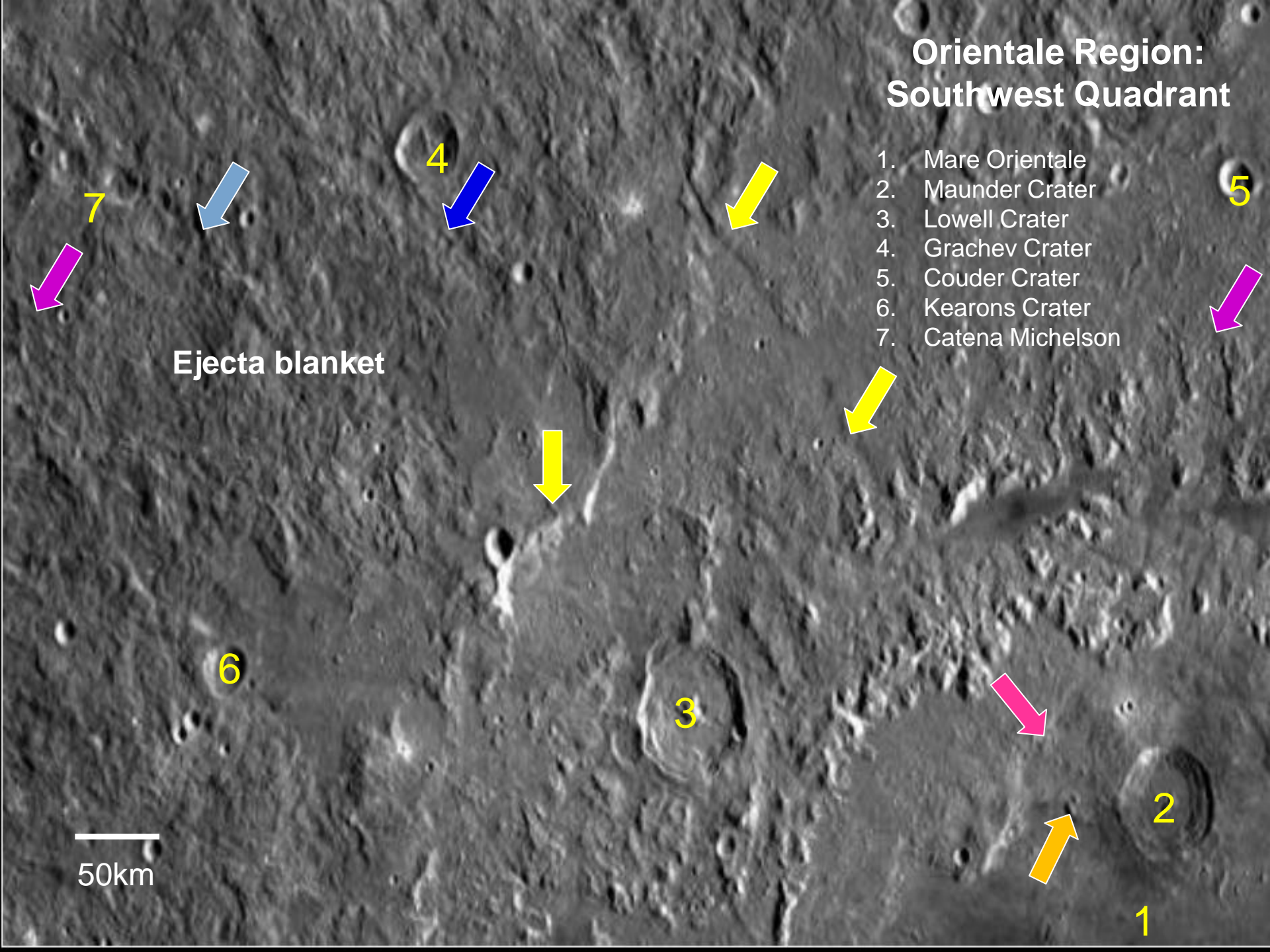
50km

Orientele Region: Southwest Quadrant

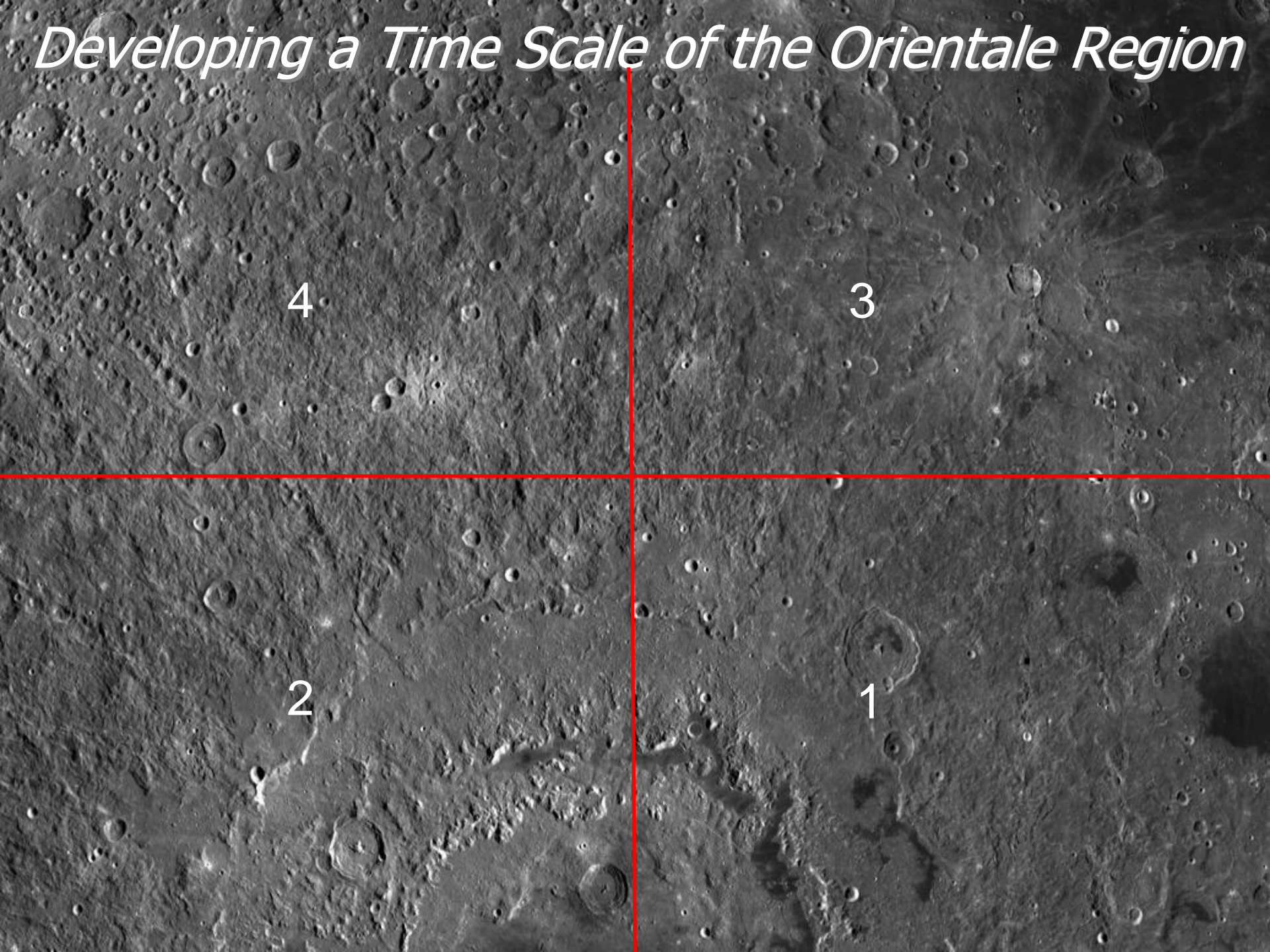
- 1. Mare Orientale
- 2. Maunder Crater
- 3. Lowell Crater
- 4. Grachev Crater
- 5. Couder Crater
- 6. Kearons Crater
- 7. Catena Michelson

Ejecta blanket

50km



Developing a Time Scale of the Orientale Region



4

3

2

1

Developing a Time Scale of the Orientale Region



12

11

9

5

1

10

3

4

13

14

8

2

15

7

6

*This concludes our
characterization of the
Orientale Region*

