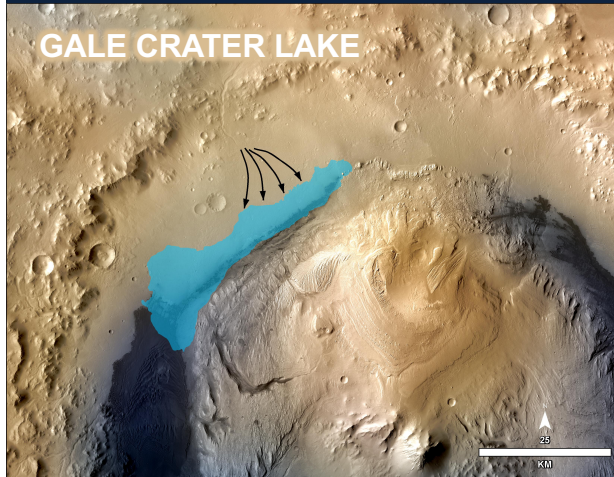
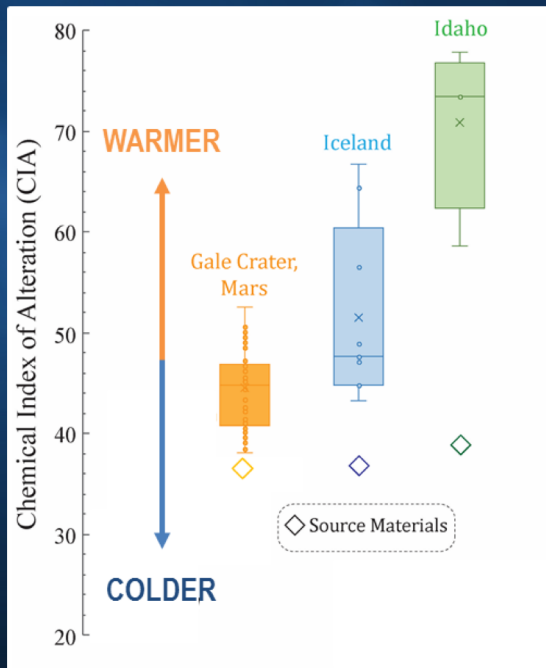


# Gale Crater: Warm & Wet or Cold & Icy?



Studying the sedimentary rocks from the ancient river-lake system in Gale Crater has yielded information regarding the state of the climate when those sediments formed.

- Sediments from Mars-like places on Earth with differing climates (Iceland and Idaho) provide a guide to interpret the ancient climate of Gale Crater.
- Comparison of sediments from Earth and Mars indicates that Gale experienced a cold and icy climate, similar in many ways to that of Iceland.
- These results allow a better understanding of the potential duration of ancient Mars was habitability.



Thorpe et al., (2018) GCA, in review  
Thorpe and Hurowitz (2018), JSR, in review  
Thorpe et al., (2019), Geology, in prep

