



Mars Exploration Program Status

Planetary Sciences Subcommittee of NAC

9 July 2009



Agenda

- MSL
 - Current Status and Progress
 - Budget Situation and Path Forward

- Future Program Planning
 - ESA and MART



Activities Since Last PSS

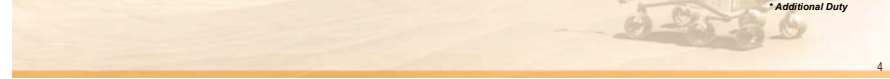
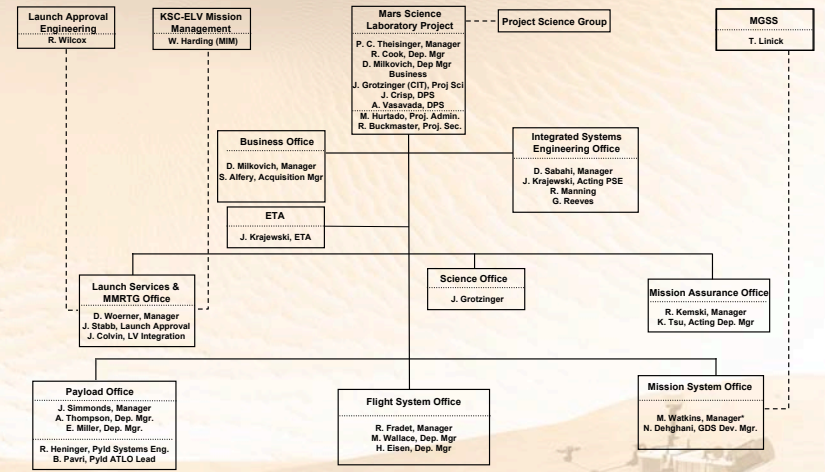
- After the decision to slip the MSL launch to 2011:
 - MSL status presented to PSS in December 2008
 - Presented interim report to SMD in February, completed the re-plan activity, and started baselining the new implementation plan in March.
 - SRB Re-Baseline Review was held May 13 – 15, 2009, and the JPL CMC on May 27, 2009

- SMD DPMC on June 11, 2009 approved MSL to proceed to APMC

- APMC on June 18, 2009 approved MSL to continue, knowing that:
 - Current reserves are low (~13%) and budget challenges remain
 - Additional reserves may be necessary based on several different cost estimate models



New MSL Project Organization



Issues Resolution Teams Established by the Systems Engineering Team

Fault Protection and redundancy	Actuator Recovery Team
Grounding, EMI/EMC	Surface Energy Augmentation
E-Bridge bridge	Actuators
Motion Control	Surface resources
Sample Transfer	CHEMCAM TEC
Functionality description, flight S/W, V&V	

- EM/testbed hardware being used extensively ahead of the flight hardware to mitigate risks before ATLO

5

Project Overview and Status

- Key technical and management issues that delayed the 2009 launch are being addressed
 - System and Subsystem design assessment and closure
 - Broad based design assessment performed
 - Issues identified being worked off by the Integrated System Engineering Office (ISEO)
 - Focusing on:
 - Redundancy/Fault Protection details
 - Sample chain robustness
 - Motion control validation
 - Test infrastructure
 - Actuators
 - Focusing on:
 - Anomaly resolution (thermal backdrive torque, bi-stability)
 - Life test completion
 - Flight Unit Production
 - Project initiated an Actuator Evaluation and Recovery Task in March
 - "Path to flyability" - Analyses and tests that would permit flying existing Aeroflex WSA and LPHTA actuators
 - As an insurance policy, initiated a study of the feasibility of alternate supplier

6

Project Overview and Status - 2

- Avionics
 - Design Finalization, including resolution of open design issues; maturing of FPGA designs; and resolving Problem Failure Reports (PFR's)
 - Major progress in completion of test infrastructure and maturing of FPGA designs.
 - RCE FM 101 PFR diagnosis (including repeat of environmental testing)
 - PFR resolution in process
 - Start of hardware rework and deliveries scheduled for later in FY.
- FSW development and V&V implementation planning
 - Four month S/W development schedule; personnel assignments, including margin, in place
 - FSW capabilities and deliveries synchronized with ATLO needs,
 - Testbed schedule for V&V generated and synchronized with FSW deliveries - substantial margin exists.

7

Overall Integration Status

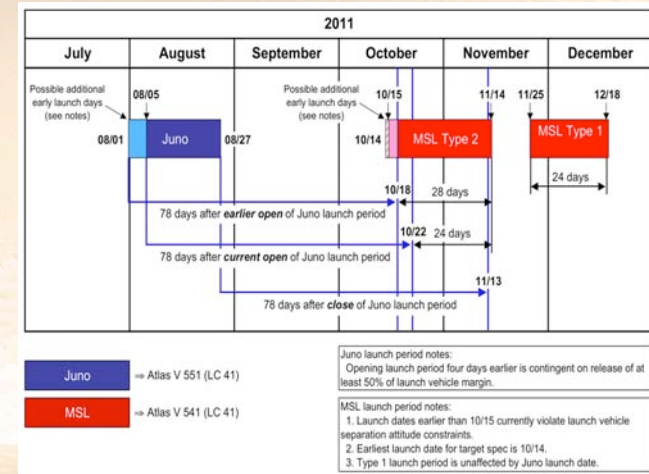
	SN	Effect	Fract	Mech
	Int	Test	Test	Int
ROVER				
AVS RC3-A	FM 101			
AVS RC3-B				
AVS RPA1A-A	FM 102			
AVS RPA1B-B	FM 101			
AVS RPA1C-C				
AVS RPA1D-D	FM 101			
AVS RPA1E-E				
AVS RPA1F-F				
AVS RPA1G-G	FM 001			
AVS RPA1H-H				
AVS RPA1I-I				
AVS RPA1J-J				
AVS RPA1K-K				
AVS RPA1L-L				
AVS RPA1M-M				
AVS RPA1N-N				
AVS RPA1O-O				
AVS RPA1P-P				
AVS RPA1Q-Q				
AVS RPA1R-R				
AVS RPA1S-S				
AVS RPA1T-T				
AVS RPA1U-U				
AVS RPA1V-V				
AVS RPA1W-W				
AVS RPA1X-X				
AVS RPA1Y-Y				
AVS RPA1Z-Z				
AVS RPA1AA-AA				
AVS RPA1AB-AB				
AVS RPA1AC-AC				
AVS RPA1AD-AD				
AVS RPA1AE-AE				
AVS RPA1AF-AF				
AVS RPA1AG-AG				
AVS RPA1AH-AH				
AVS RPA1AI-AI				
AVS RPA1AJ-AJ				
AVS RPA1AK-AK				
AVS RPA1AL-AL				
AVS RPA1AM-AM				
AVS RPA1AN-AN				
AVS RPA1AO-AO				
AVS RPA1AP-AP				
AVS RPA1AQ-AQ				
AVS RPA1AR-AR				
AVS RPA1AS-AS				
AVS RPA1AT-AT				
AVS RPA1AU-AU				
AVS RPA1AV-AV				
AVS RPA1AW-AW				
AVS RPA1AX-AX				
AVS RPA1AY-AY				
AVS RPA1AZ-AZ				
AVS RPA1BA-BA				
AVS RPA1BB-BA				
AVS RPA1BC-BA				
AVS RPA1BD-BA				
AVS RPA1BE-BA				
AVS RPA1BF-BA				
AVS RPA1BG-BA				
AVS RPA1BH-BA				
AVS RPA1BI-BA				
AVS RPA1BJ-BA				
AVS RPA1BK-BA				
AVS RPA1BL-BA				
AVS RPA1BM-BA				
AVS RPA1BN-BA				
AVS RPA1BO-BA				
AVS RPA1BP-BA				
AVS RPA1BQ-BA				
AVS RPA1BR-BA				
AVS RPA1BS-BA				
AVS RPA1BT-BA				
AVS RPA1BU-BA				
AVS RPA1BV-BA				
AVS RPA1BW-BA				
AVS RPA1BX-BA				
AVS RPA1BY-BA				
AVS RPA1BZ-BA				
AVS RPA1CA-CA				
AVS RPA1CB-CA				
AVS RPA1CC-CA				
AVS RPA1CD-CA				
AVS RPA1CE-CA				
AVS RPA1CF-CA				
AVS RPA1CG-CA				
AVS RPA1CH-CA				
AVS RPA1CI-CA				
AVS RPA1CJ-CA				
AVS RPA1CK-CA				
AVS RPA1CL-CA				
AVS RPA1CM-CA				
AVS RPA1CN-CA				
AVS RPA1CO-CA				
AVS RPA1CP-CA				
AVS RPA1CQ-CA				
AVS RPA1CR-CA				
AVS RPA1CS-CA				
AVS RPA1CT-CA				
AVS RPA1CU-CA				
AVS RPA1CV-CA				
AVS RPA1CW-CA				
AVS RPA1CX-CA				
AVS RPA1CY-CA				
AVS RPA1CZ-CA				
AVS RPA1DA-DA				
AVS RPA1DB-DA				
AVS RPA1DC-DA				
AVS RPA1DD-DA				
AVS RPA1DE-DA				
AVS RPA1DF-DA				
AVS RPA1DG-DA				
AVS RPA1DH-DA				
AVS RPA1DI-DA				
AVS RPA1DJ-DA				
AVS RPA1DK-DA				
AVS RPA1DL-DA				
AVS RPA1DM-DA				
AVS RPA1DN-DA				
AVS RPA1DO-DA				
AVS RPA1DP-DA				
AVS RPA1DQ-DA				
AVS RPA1DR-DA				
AVS RPA1DS-DA				
AVS RPA1DT-DA				
AVS RPA1DU-DA				
AVS RPA1DV-DA				
AVS RPA1DW-DA				
AVS RPA1DX-DA				
AVS RPA1DY-DA				
AVS RPA1DZ-DA				
AVS RPA1EA-EA				
AVS RPA1EB-EA				
AVS RPA1EC-EA				
AVS RPA1ED-EA				
AVS RPA1EE-EA				
AVS RPA1EF-EA				
AVS RPA1EG-EA				
AVS RPA1EH-EA				
AVS RPA1EI-EA				
AVS RPA1EJ-EA				
AVS RPA1EK-EA				
AVS RPA1EL-EA				
AVS RPA1EM-EA				
AVS RPA1EN-EA				
AVS RPA1EO-EA				
AVS RPA1EP-EA				
AVS RPA1EQ-EA				
AVS RPA1ER-EA				
AVS RPA1ES-EA				
AVS RPA1ET-EA				
AVS RPA1EU-EA				
AVS RPA1EV-EA				
AVS RPA1EW-EA				
AVS RPA1EX-EA				
AVS RPA1EY-EA				
AVS RPA1EZ-EA				
AVS RPA1FA-FA				
AVS RPA1FB-FA				
AVS RPA1FC-FA				
AVS RPA1FD-FA				
AVS RPA1FE-FA				
AVS RPA1FF-FA				
AVS RPA1FG-FA				
AVS RPA1FH-FA				
AVS RPA1FI-FA				
AVS RPA1FJ-FA				
AVS RPA1FK-FA				
AVS RPA1FL-FA				
AVS RPA1FM-FA				
AVS RPA1FN-FA				
AVS RPA1FO-FA				
AVS RPA1FP-FA				
AVS RPA1FQ-FA				
AVS RPA1FR-FA				
AVS RPA1FS-FA				
AVS RPA1FT-FA				
AVS RPA1FU-FA				
AVS RPA1FV-FA				
AVS RPA1FW-FA				
AVS RPA1FX-FA				
AVS RPA1FY-FA				
AVS RPA1FZ-FA				
AVS RPA1GA-GA				
AVS RPA1GB-GA				
AVS RPA1GC-GA				
AVS RPA1GD-GA				
AVS RPA1GE-GA				
AVS RPA1GF-GA				
AVS RPA1GG-GA				
AVS RPA1GH-GA				
AVS RPA1GI-GA				
AVS RPA1GJ-GA				
AVS RPA1GK-GA				
AVS RPA1GL-GA				
AVS RPA1GM-GA				
AVS RPA1GN-GA				
AVS RPA1GO-GA				
AVS RPA1GP-GA				
AVS RPA1GQ-GA				
AVS RPA1GR-GA				
AVS RPA1GS-GA				
AVS RPA1GT-GA				
AVS RPA1GU-GA				
AVS RPA1GV-GA				
AVS RPA1GW-GA				
AVS RPA1GX-GA				
AVS RPA1GY-GA				
AVS RPA1GZ-GA				
AVS RPA1HA-HA				
AVS RPA1HB-HA				
AVS RPA1HC-HA				
AVS RPA1HD-HA				
AVS RPA1HE-HA				
AVS RPA1HF-HA				
AVS RPA1HG-HA				
AVS RPA1HH-HA				
AVS RPA1HI-HA				
AVS RPA1HJ-HA				
AVS RPA1HK-HA				
AVS RPA1HL-HA				
AVS RPA1HM-HA				
AVS RPA1HN-HA				
AVS RPA1HO-HA				
AVS RPA1HP-HA				
AVS RPA1HQ-HA				
AVS RPA1HR-HA				
AVS RPA1HS-HA				
AVS RPA1HT-HA				
AVS RPA1HU-HA				
AVS RPA1HV-HA				
AVS RPA1HW-HA				
AVS RPA1HX-HA				
AVS RPA1HY-HA				
AVS RPA1HZ-HA				
AVS RPA1IA-IA				
AVS RPA1IB-IA				
AVS RPA1IC-IA				
AVS RPA1ID-IA				
AVS RPA1IE-IA				
AVS RPA1IF-IA				
AVS RPA1IG-IA				
AVS RPA1IH-IA				
AVS RPA1II-IA				
AVS RPA1IJ-IA				
AVS RPA1IK-IA				
AVS RPA1IL-IA				
AVS RPA1IM-IA				
AVS RPA1IN-IA				
AVS RPA1IO-IA				
AVS RPA1IP-IA				
AVS RPA1IQ-IA				
AVS RPA1IR-IA				
AVS RPA1IS-IA				
AVS RPA1IT-IA				
AVS RPA1IU-IA				
AVS RPA1IV-IA				
AVS RPA1IW-IA				
AVS RPA1IX-IA				
AVS RPA1IY-IA				
AVS RPA1IZ-IA				
AVS RPA1JA-JA				
AVS RPA1JB-JA				
AVS RPA1JC-JA				
AVS RPA1JD-JA				
AVS RPA1JE-JA				
AVS RPA1JF-JA				
AVS RPA1JG-JA				
AVS RPA1JH-JA				
AVS RPA1JI-JA				
AVS RPA1JJ-JA				
AVS RPA1JK-JA				
AVS RPA1JL-JA				
AVS RPA1JM-JA				
AVS RPA1JN-JA				
AVS RPA1JO-JA				
AVS RPA1JP-JA				
AVS RPA1JQ-JA				
AVS RPA1JR-JA				
AVS RPA1JS-JA				
AVS RPA1JT-JA				
AVS RPA1JU-JA				
AVS RPA1JV-JA				
AVS RPA1JW-JA				
AVS RPA1JX-JA				
AVS RPA1JY-JA				
AVS RPA1JZ-JA				
AVS RPA1KA-KA				
AVS RPA1KB-KA				
AVS RPA1KC-KA				
AVS RPA1KD-KA				
AVS RPA1KE-KA				
AVS RPA1KF-KA				
AVS RPA1KG-KA				
AVS RPA1KH-KA				
AVS RPA1KI-KA				
AVS RPA1KJ-KA				
AVS RPA1KK-KA				
AVS RPA1KL-KA				
AVS RPA1KM-KA				
AVS RPA1KN-KA				
AVS RPA1KO-KA				
AVS RPA1KP-KA				
AVS RPA1KQ-KA				
AVS RPA1KR-KA				
AVS RPA1KS-KA				
AVS RPA1KT-KA				
AVS RPA1KU-KA				
AVS RPA1KV-KA				
AVS RPA1KW-KA				
AVS RPA1KX-KA				
AVS RPA1KY-KA				
AVS RPA1KZ-KA				
AVS RPA1LA-LA				
AVS RPA1LB-LA				
AVS RPA1LC-LA				
AVS RPA1LD-LA				
AVS RPA1LE-LA				
AVS RPA1LF-LA				
AVS RPA1LG-LA				
AVS RPA1LH-LA				
AVS RPA1LI-LA				
AVS RPA1LJ-LA				
AVS RPA1LK-LA				

New Technical Issues

- Rover power system design does not meet present mission requirements, requiring additional battery capacity, and possibly solar array
 - Increased energy requirements to keep actuators above safe operating temperature
 - Almost double energy requirement to operate/conduct SAM instrument science/sample analysis scenarios
- The SAM instrument has not completed its environmental qualification program, and the wide range pump has not demonstrated life qualification (hours of operation and start/stop) requirements.

9

MSL Launch Period Options



10

Budget Status and Impacts

- MSL overall budget needs remain around \$400M at PMC, but reserves were unacceptably low (~13% cost-to-go)
- Expect a requirement for additional resources to restore reserves to adequate levels (\$15-115M), predicted by several different cost models
 - Amount to be determined this calendar year after more progress has made on technical issues
- Impacts must be contained in Planetary Division
 - The Mars Program will repay non-Mars “loans”
- Impacts to cover low- to mid-range budget needs, in order:
 - Reduce or eliminate Mars Program APA in FY10 and FY11
 - Reduce US portion of Mars-16/18/20 missions
 - Reduce Discovery future and New Frontiers mission lines (no impact to current schedules)
- Impacts increase to cover mid- to upper-range budget needs, in order:
 - Further reduce US portion of Mars-16/18/20 missions
 - Delay LADEE and ILN missions
 - Delay New Frontiers 3 phase B selection

11

The Path Forward

- MSL Project's Baseline readjusted w/additional \$400M in President's 2010 budget
- Updated Status to PSS (this meeting)
- Submit MSL Project Cost and Schedule Analysis Report (“Breach Report”) to Congress by the end of July
 - Development = \$1,631M (68% development overrun); LCC = \$2,286M
 - Report states that additional reserves may be needed (\$15M to \$115M range)
- HQ/SMD will continue tracking progress through weekly meetings and metrics (resolution of technical issues, reserve burn rates, PFR closure rates, workforce profile, etc.)
- Conduct a “Readiness to Proceed” Review in November 2009—actuators, avionics, power, etc.
 - Project must stabilize these key technical issues for meaningful CTG estimates
 - Include updated cost estimate
- After “Readiness to Proceed” Review, assess the need for added funding reserves
 - APMC approval required
 - Bring back to PSS for review

12

Future Program Planning

13

ESA and NASA are Forming a Joint Mars Exploration Initiative

- Joint studies began the first week of January, 2009
- Joint ESA-NASA Engineering Working Group (JEWG)
 - Developed cooperative architecture options for shared mission responsibilities
- Joint Instrument Definition Team (JIDT)
 - Defined minimum investigation capabilities for orbital science, to focus EWG studies
 - Focused on orbital measurements: Trace Gas Detection and mapping, aerosols, surface mapping
- Joint Executive Board
 - JEWG and JIDT reported to an Executive Board made up of senior ESA and NASA Managers
 - NASA: McCuiston, Meyer
 - ESA: Coradini, Ellwood
 - In-depth analyses and meetings occurred, January–June 2009
 - The Board's determined that multiple options for mission portfolios are budgetarily and technically feasible, but additional analyses are required to determine the most feasible
 - June 2009 ESA-NASA Bi-lateral meeting endorsed the determination and authorized additional studies encompassing a broader range of mission portfolio studies

14

Study Principles Established for an ESA/NASA Collaboration

NASA Principles

1. Partnership must address NASA/MEP/NRC, as well as ESA, science goals
2. NASA-ESA establish a strategic partnership for Mars exploration in 2016/18/20 and beyond, with immediate focus on ExoMars and 2016-18
3. *Plans must be budgetarily and technically realistic*
3a. *Develop two plans: what we can afford to do, and the "best" partnership*
4. Shared science and science efforts on all missions, including sharing science data
5. Substantial collaboration will create dependencies, and must build on both party's strengths and strategic interests
6. Missions should be segmented with clean interfaces (ITAR requirements must be complied with as well)
7. US does EDL in at least one opportunity of 2016-18 (NASA core competency)
8. US has a surface system in at least one opportunity of 2016-18 (NASA core competency)
9. US provides an ELV in no more than one opportunity of 2016-18
10. Shared opportunities require shared credit for outreach, public relations and national/organizational prestige
11. Missions must show identifiable progress toward Mars Sample Return

ESA Principles

1. ESA science priority for ExoMars—Exobiology
1. ESA-NASA establish a strategic partnership for Mars exploration in 2016/18/20 and beyond, with immediate focus on ExoMars and 2016-18
2. Shared science and science efforts on all missions, including sharing science data
5. ESA technology tenants for ExoMars-EDL, rover, drilling, sample preparation and distribution
7. Missions should be segmented with clean interfaces
6. *Lead agency to be defined for each mission. For ExoMars (2016), ESA would like to be the lead agency*
9. Shared opportunities require shared credit for outreach, public relations and national/organizational prestige
3. Missions must show identifiable progress toward Mars Sample Return
8. *Need a communications data relay orbiter for 2016 opportunity which could be used as a science opportunity as a secondary objective*

NOTE: Red/italics items do not have a specific cross-reference

15

Leading Elements for Future Architectures



Trace Gas & Telecomm Orbiter

- Detect a suite of trace gases with high sensitivity (ppt)
- Characterize their time/space variability & infer sources
- Replenish orbiter infrastructure support for the Program

Rovers

- Explore Mars habitability in the context of diverse aqueous environments provided by a new site
- Begin process of preparing samples for return

Geophysical Surface Science

- Determine the planet's internal structure and composition, including its core, crust and mantle
- Collect simultaneous network meteorological data on timescales ranging from minutes to days to seasons

Mars Sample Return

- Make a major advance in understanding Mars, from both geochemical and astrobiological perspectives, by the detailed analysis conducted on carefully selected samples of Mars returned to Earth

16

Joint ESA-NASA Mars Exploration Initiative

- The Initiative's mission portfolio will span 2016 through 2020 opportunities, with goal of Mars Sample Return in the 2020's
- Follow-up on the recent methane discovery, and emplacement of long-term telecommunications relay capability, are important (a NASA-priority)
- Completion of the ExoMars mission is important (an ESA-priority)
- Studies begin this week for 2016-2020 mission queue:
 - Astrobiology is the overall scientific focus
 - Geological, geophysical and geochemical sciences are a high priority
 - Surface systems are expected to predominate mission types
 - Sample return technologies will factor prominently in mission design, such as
 - Precision sample handling
 - Sample preparation and caching
 - Precision landing
- A new series of intense studies are being initiated under these premises
 - Results timed to provide more detail on mission queue to the Decadal's Mars Panel in September, and the ESA Council Meeting in October

17

MART, and Their Assessments

- The Mars Architecture Review Team (MART) is a Program-level team established to assess MEP architecture's, science "compliance", risks and alternatives—sort of a "Program-level SRB"
 - Reports to the NASA Mars Program Director
 - No scientific evaluation or competition with community recommendations (NRC, PSS, MEPAG)
 - No development of architectures to accomplish science—that's an inherently governmental activity
 - Two meetings have occurred to provide input on possible architectures for a bi-lateral Mars Program with ESA
- Findings to date focused on US accommodation of the current ExoMars mission on the 2016 NASA orbiter mission, and follow-on 2018 opportunity
 - Astrobiology focus well supported by the suite of missions; 2016 trace gas/methane orbiter is a high priority for later landers (and comm.)

18

MART, and Their Assessments

- Accommodation of 1200kg ExoMars Decent Module Composite represents an unacceptable level of technical risk for both Agencies
 - Architecture options of acceptable risk are beyond either agency's budgets
 - NASA's 2018 lander mission is ill-defined WRT critical science and technology
 - Recommended options to consider that could reduce cost and risk to acceptable levels, such as spreading ExoMars elements across multiple opportunities, or a NASA-led orbiter in 2016 followed by the lander(s) in later opportunities.
 - Reiterated a *ESA/NASA Guiding Principle* of the cooperation, that all missions need feed-forward to returning samples in the future
- The plan is to internationalize MART to support the joint ESA/NASA Mars Initiative

19