

Panel Presentations and Discussion



A panel of four aerospace industry representatives discusses the technical readiness for Mars exploration, responding to the question "What do we really need for a human Mars Mission?"



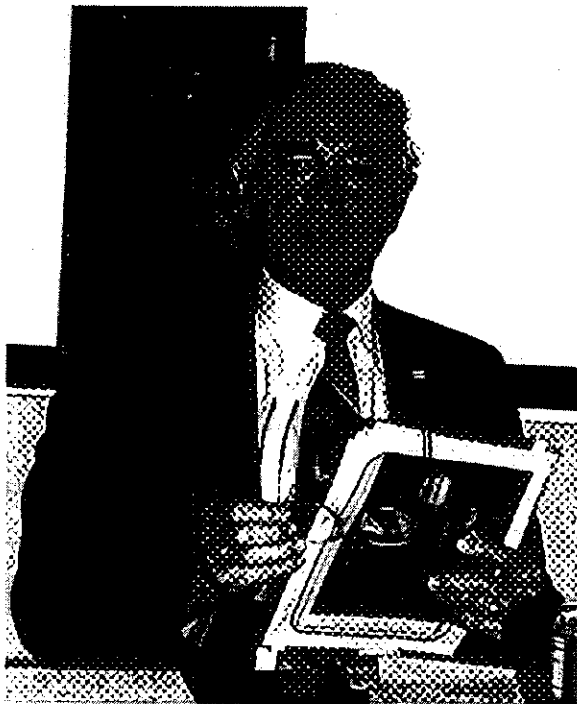
Doug Cooke of NASA/JSC's Exploration Office serves as moderator for the industry panel.



Dr. Joseph Kerwin of Wyle Laboratory Life Sciences discusses human physiology and biomedical issues facing crews exploring the martian surface.



Harvey Willenberg of Boeing focuses on supporting technologies required to enable human missions on Mars.



Mike Henry of Lockheed Martin presents his views on optical technologies that might contribute to human surface missions on Mars.



Dr. Eric Rice of Orbitec discusses the impact of using *in situ* resources on Mars, and how small business innovations could contribute to planetary missions.