

SSE Decadal Survey 2003 and 2011

David H. Smith

Space Studies Board, National Research Council

Division for Planetary Sciences

American Astronomical Society

Ithaca, New York, 12 October, 2008

Outline

- What major topics will the decadal survey address?
- How should the decadal survey committee be organized?
- What can be done to enhance community input given the likely schedule for key event?
- How can community interactions with the decadal survey committee be optimized?

What will the Report Address?

The likely topics include the following:

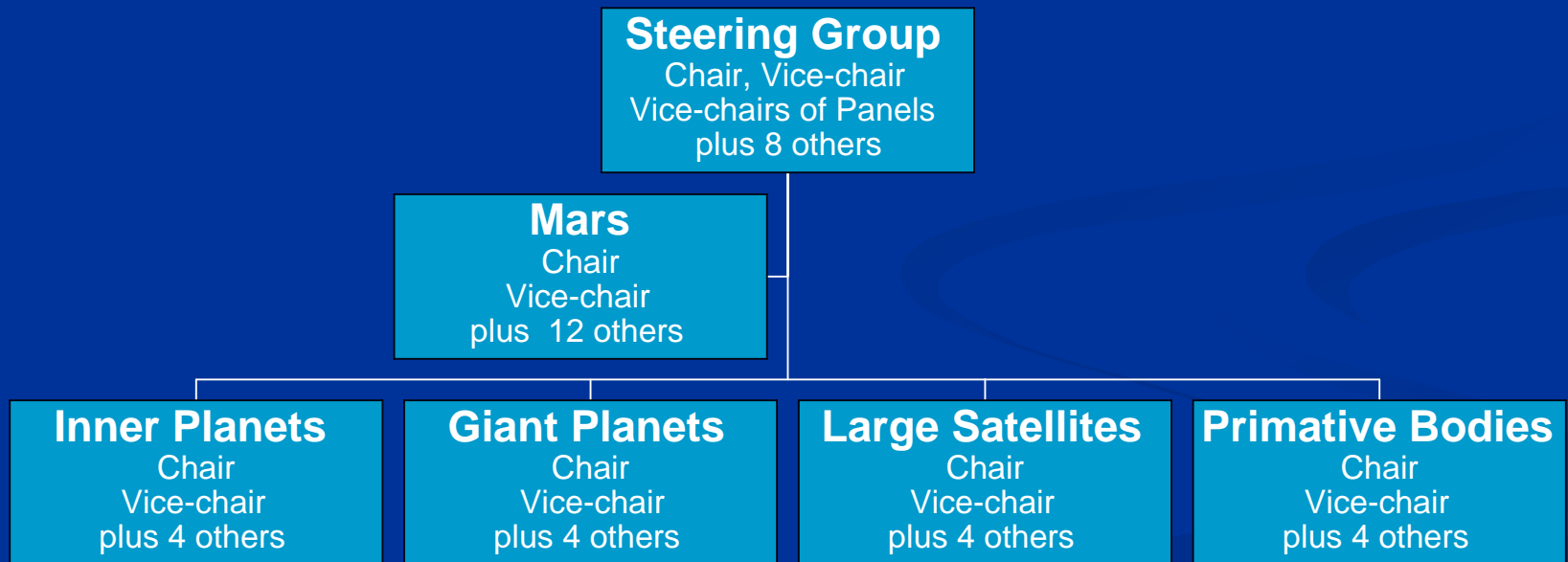
1. Overview of planetary science—what it is, its relationship to other scientific endeavors, and why it is a compelling undertaking;
2. Broad survey of the current state of knowledge of the solar system;
3. Inventory of the key scientific questions that should guide flight programs and supporting research programs;
4. Recommendations on the optimum balance among small, medium, and large missions and supporting activities;
5. Technology development needs and opportunities;
6. Prioritized recommendations for major flight investigations in the New Frontiers, and flagship classes for initiation in the period 2011-2020; and
7. Recommendations for supporting research required to maximize the science return from the flight investigations.

Other major topics?

Planned Organization

Decadal Survey Committee

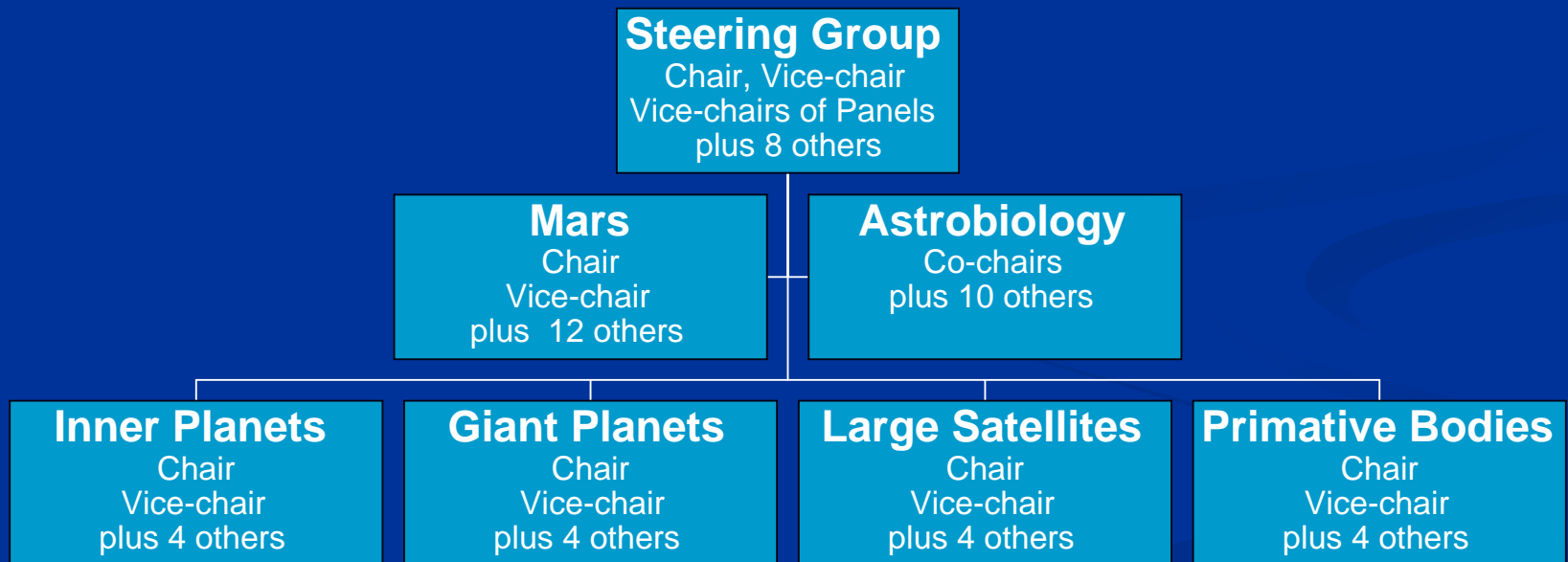
2001-2003



Actual Organization

Decadal Survey Committee

2001-2003



Notional Organization Decadal Survey Committee 2009-2011



How should the topical panels be organized?

Optimum Schedule 2008-2011

2008

4th Quarter Informal request received, NRC approves initiation, Proposal to NASA (and others?)

2009

1st Quarter Funding received, Membership appointed
2nd Quarter Meetings of the steering group and panels begin
3-4th Quarter Panels' period of peak active

2010

1st Quarter Panel reports finalized
2-3rd Quarter Prioritization and drafting of survey report
4th Quarter Draft survey report to reviewers, Report revised

2011

1st Quarter Report approved, NASA briefed and prepub. released
3rd Quarter Printed report released

Actual Schedule 2000-2003

2000

November Informal request received

2001

January Formal request, NRC approves initiation

May Membership appointed

July Meetings of the steering group and panels begin

December Panel meetings conclude

2002

February Panel reports drafted, Prioritization meeting

March First draft of complete report

April Draft report to reviewers

June Report review

July Report approved by NRC, NASA briefed,

Prepub. released

2003

September Printed report released

Optimum Schedule 2008-2011?

2008

4th Quarter

Informal request received, NRC approves initiation, Proposal to NASA (and others?)

2009

1st Quarter

2nd Quarter

3-4th Quarter

Funding received, Membership appointed
Steering group and panel meetings begin
Panels' period of peak active

2010

1st Quarter

2-3rd Quarter

4th Quarter

Panel reports finalized
Prioritization and drafting of survey report
Draft survey report to reviewers, Report revised

2011

1st Quarter

3rd Quarter

Report approved, NASA briefed and prepub. released
Printed report released

Outreach Sessions

Science Presentations

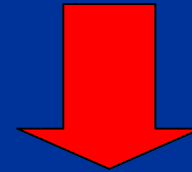
Agency Presentations

Individual Inputs

Community White Papers



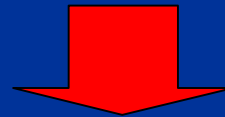
Community Involvement



SSE Survey Panels

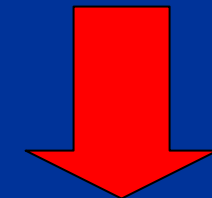
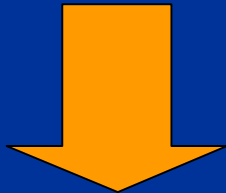


SSE Survey Steering Group



Part I

Part II



Decadal Survey Report

Community Interactions 2000-2003

- **Through town hall meetings at multiple venues:** such as scientific conferences, specially arranged meetings, in conjunction with panel and steering-group meetings, and professional meetings.
- **Stimulation of written input from ad hoc community panels**
 - Web page sponsored by the DPS/AAS in conjunction with PGD/GSA, PSS/AGU and Meteoritical Soc.
 - 24 panels formed (3 to 61 members each) involving >308 individuals
 - 23 finished reports published as *The Future of Solar System Exploration, 2003-2013: Community Contributions to the NRC Solar System Exploration Decadal Survey* (Marc V. Sykes, Ed., *Astronomical Society of the Pacific Conf. Series, Volume 272*).
 - Community ad hoc reports used by panels and steering group
- **Independent DPS and Planetary Society polls** on some key issues
- **NRC Report review process** solicited comments from 13 reviewers who supplied more than 450 specific comments, response to which immeasurably improved the quality of the report.

Topics of Community Panels

Mercury

Venus

Mars

Asteroids

Io

Europa

Titan

Neptune System

Kuiper Belt Objects

NEOs: Sample Return

NEOs: Human Exploration and Utilization

NEOs: Discovery, Tracking and Characterization

Lunar Exploration: Robotic and Human

Interplanetary Dust

Planetary Rings

Sub-orbital Program

Education and Outreach

Terrestrial Analogs to Mars

Radio Science and the DSN

Extraterrestrial Mineralogy

Instrument Technology

Solar System Astrometry

But, what about the Big Picture! Was nobody other than the decadal survey committee interested in an integrated strategy for solar system exploration?

Optimizing Community Interactions

How to stimulate broad community input?

- Town hall and open meetings as early as possible (e.g., **DPS**, AGU and LPSC). The schedule last time was suboptimal for engaging in outreach at major community meetings.
- Coordinate with other groups that have overlapping interests.
- Early stimulation of ad hoc community reports. (The DPS committee was very proactive and successful in generating inputs to the 2000-2003 decadal survey). Last time, the community reports could have had a greater impact on the formulation of panel positions if they had arrived earlier.

Other actions?

Summary

Issues to consider:

1. What specific major topics should the decadal survey address?
2. How should the decadal survey's topical panels be organized?
Who should chair the survey?
Who should chair the panels?
Who should serve on the steering group and panels?
3. How can community interactions and input be optimized given the decadal survey's likely schedule.
4. What can the survey committee do to facilitate input from the community and vice versa?

Written input is encouraged and preferred. A decadal survey website will go on-line soon. Watch out at www.nas.edu/ssb .