

# RIVER CHANNELS

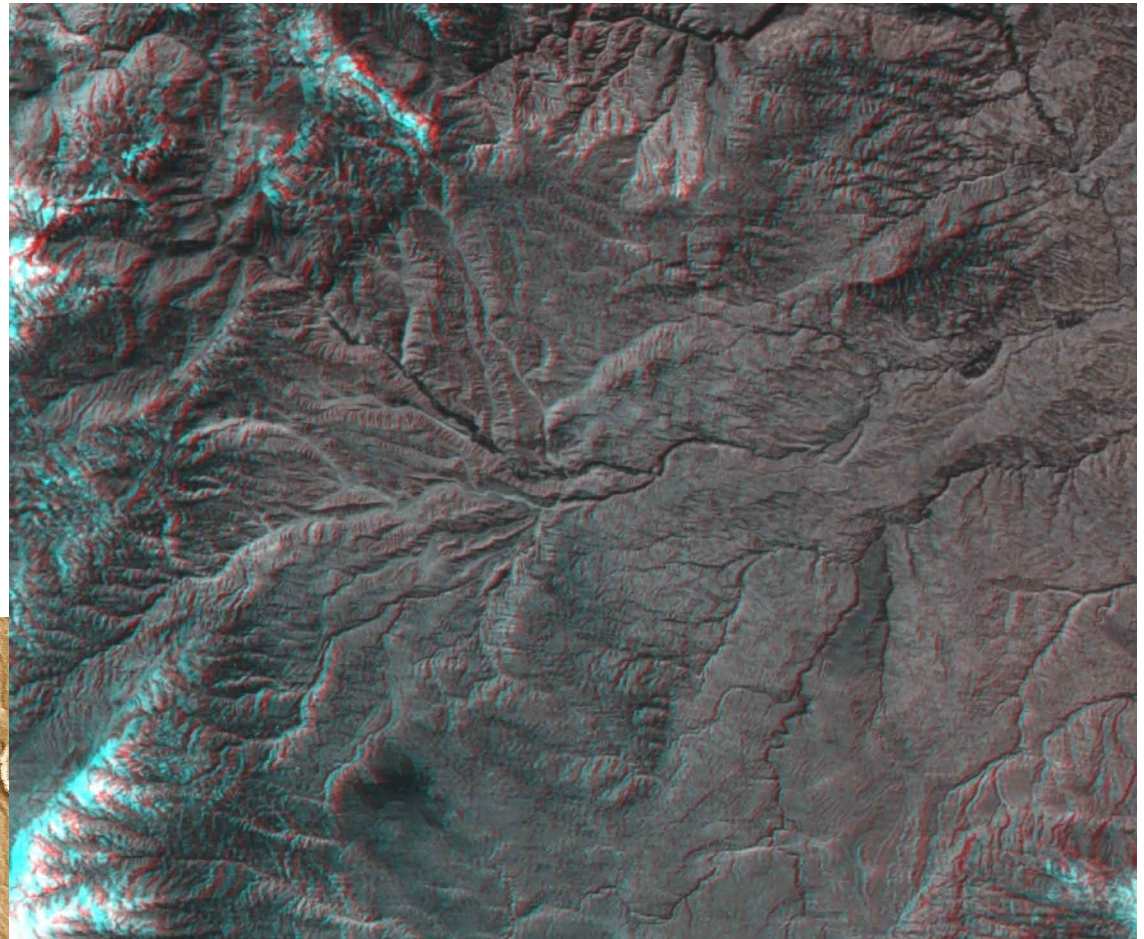
## Darya-Ye Sut, Afghanistan, Earth

This river lies on the Hindu Kush mountain range in northern Afghanistan and empties into the Amu Darya, which flows to the Aral Sea.

The Darya-Ye Sut has streams flowing in one or two general directions. This drainage pattern bears a resemblance to some channel networks on Mars, such as the Warrego Valles (below).

*3-D Tour of the Solar System* ©Lunar and Planetary Institute, 1997

---



*use 3-D glasses to view image*



## Warrego Valles, Mars

This area on Mars has been eroded by valley networks. No rain falls on Mars today. These channels probably formed when Mars was wetter or warmer than it is now.

*Lunar and Planetary Institute*  
<http://www.lpi.usra.edu>