

## Modification of the dichotomy boundary on Mars by Amazonian mid-latitude regional glaciation

James W. Head,<sup>1</sup> Amanda L. Nahm,<sup>2</sup> David R. Marchant,<sup>3</sup> and Gerhard Neukum<sup>4</sup>

Received 9 August 2005; revised 5 October 2005; accepted 11 October 2005; published 10 March 2006.

[1] Restoration of the dichotomy boundary to its original position to assess its origin requires a thorough knowledge of processes responsible for its degradation and retreat. The unique fretted terrain, located along the Deuteronilus-Protonilus Mensae northern mid-latitude portion of the boundary, has been long held to provide clues to dichotomy degradation processes. We use new spacecraft data to show that fretted valleys display a multitude of characteristics typical of integrated valley glacial systems on Earth (multiple theater-headed, alcove-like accumulation areas; sharp arete-like ridges typical of glacial erosion; converging patterns of downslope valley flow; valley lineation patterns typical of folding and shear; wrap-around features indicative of flow around obstacles; and broad piedmont-like lobes as the valley fill extends out into the northern lowlands). The single integrated system containing these features covers about 30,000 km<sup>2</sup>, and is one of dozens of fretted valleys along the dichotomy boundary in this region. These relationships suggest that the boundary area was subjected to very large-scale regional glaciation during the Amazonian. Recognition and documentation of this important late-stage process provides information critical to reconstructing the original dichotomy boundary. **Citation:** Head, J. W., A. L. Nahm, D. R. Marchant, and G. Neukum (2006), Modification of the dichotomy boundary on Mars by Amazonian mid-latitude regional glaciation, *Geophys. Res. Lett.*, 33, L08S03, doi:10.1029/2005GL024360.

[2] One of the most topographically distinctive regions of the global dichotomy boundary is the part that extends to the highest northern latitudes (30–50°N), Deuteronilus-Protonilus Mensae (DPM), extending from ~290–360°W. This region, unlike most others along the boundary, is characterized by fretted terrain, in which the northern lowlands give way to progressively larger upland mesas and ultimately to sinuous valleys that extend into the adjacent highlands [Sharp, 1973] (Figure 1). The mesas are surrounded by lobate debris aprons (LDA), largely attributed to mass wasting aided by periodic flow of ice in pore spaces derived from diffusion of atmospheric water vapor [e.g., Squyres, 1978]. The fretted valleys are broad, steep-walled,

flat-floored and extend deep into the uplands; they contain lineated valley fill (LVF). The similarity of mass wasting from the walls of the fretted valleys and the lobate debris aprons surrounding the mesas has led many to conclude that LVF may have formed largely by mass wasting, perhaps aided by groundwater [e.g., Carr, 1995]. In Viking images, the lineated valley fill that occupies these valleys was shown to be characterized by axial ridges and grooves on the valley floors, and it was noted that these could be caused by convergence, in the middle of the valley, of linear debris aprons derived from opposite walls [e.g., Squyres, 1978]. On the other hand, Lucchitta [1984] showed examples in which wall ridges and grooves bend downvalley to form axial lines, suggesting down-valley flow and a more important role for ice-related processes [Baker, 1982]. In an update using MGS MOC and MOLA data, Carr [2001] pointed out that fretted valleys are poorly graded and concluded that they initially formed by fluvial processes, but were subsequently widened and filled by the same mass wasting processes that formed debris aprons; furthermore, Carr [2001] observed down-valley topographic slope reversals, concluding that down-valley flow of LVF was minor. In summary, most published explanations suggest that the fretted terrain has been dominated by degradational processes producing lobate debris aprons around isolated mesas, broadened fretted valleys and the production of lineated valley fill largely by mass wasting of the valley walls [e.g., Squyres, 1978; Carr, 1995, 2001]. Here we use new data from the Mars Global Surveyor, Odyssey, and Mars Express spacecraft to study the nature of fretted valleys and the contained LVF to analyze their mode of formation and emplacement and their modification histories.

[3] We completed a reconnaissance study of several dozen fretted valleys in this region and chose a typical example for detailed analysis at ~34°E, 41°N in the central region between Deuteronilus and Protonilus Mensae (Figure 1). Using MOLA altimetry, and Viking, THEMIS, HRSC, and MOC images, we systematically analyzed the LVF from the narrow parts of the deeper upland valleys progressively toward the northern lowlands. In the most inland regions of the fretted valleys analyzed (areas A and B in Figure 1c) the valleys are narrow (~10–20 km in width), often have distinctively cusped (convex-outward) shoulder-to-shoulder alcoves along the walls (region A) or larger tributary valleys often forming hanging valleys along the wall margins (region B). In contrast to the sharp parallel valley walls and parallel along-valley lineated fill typical of many fretted valleys described elsewhere [e.g., Squyres, 1978; Carr, 1995, 2001], these alcoves are sources of lineated valley fill (Figures 2a–2d) that can be seen to emerge from individual alcoves as lobes, descending onto the valley floor, bending and turning in a downslope

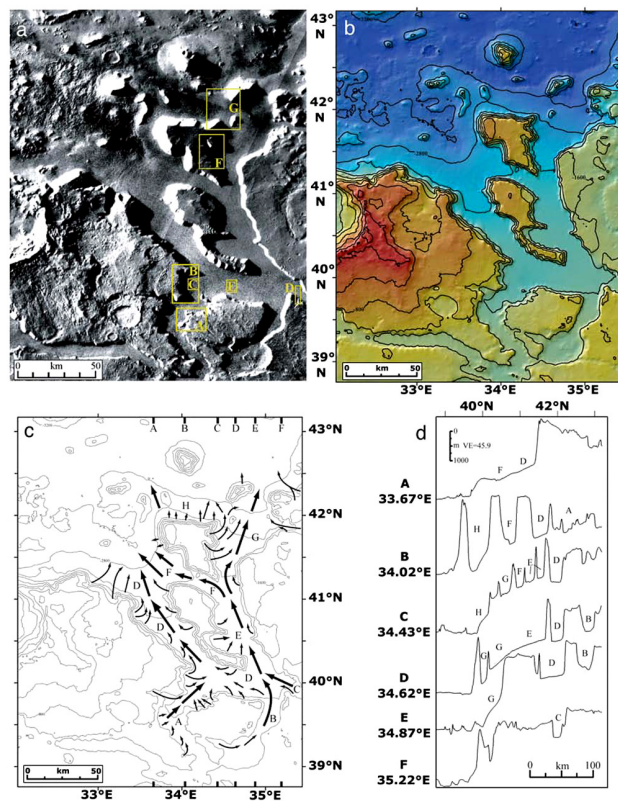
<sup>1</sup>Department of Geological Sciences, Brown University, Providence, Rhode Island, USA.

<sup>2</sup>Department of Geological Sciences, University of Colorado, Boulder, Colorado, USA.

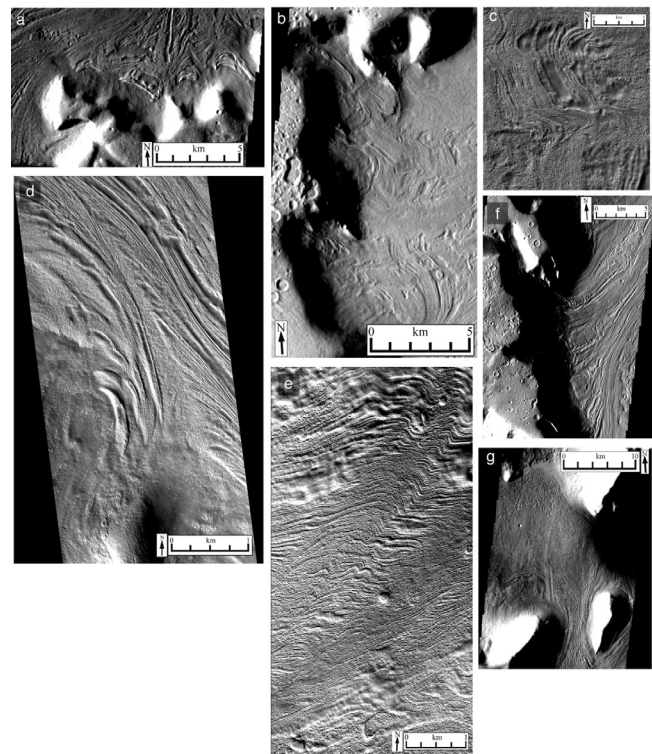
<sup>3</sup>Department of Earth Sciences, Boston University, Boston, Massachusetts, USA.

<sup>4</sup>Institut für Geologische Wissenschaften, Freie Universität Berlin, Berlin, Germany.

direction, and merging with adjacent lobes, deforming in the process ultimately to form the distinctive along-strike ridges of LVF. A particularly good example of the transport of material from an alcove and its deformation and inclusion into the main along-valley lineations (Figure 2d) is seen as area C merges with the flow emerging from area B. Here, convex-outward, concentric-lobed flows are merging with adjacent lobes and converging with the along-valley flow, becoming progressively compressed and folded until they form the parallel along-valley lineations that are the hallmark of LVF. These types of alcoves, the arete-like borders between them, the arcuate-ridged lobes extending from them, the progressive compression and folding of the lobes as they converge onto the valley floor and lose their identity, are all hallmarks of glaciated valley landsystems on Earth [Eyles, 1983; Benn *et al.*, 2003]. In the context of such valley glacial environments, we interpret the alcoves on Mars to represent microenvironments where ice and snow accumulated, alcove walls shed debris onto the ice, and debris-covered glaciers emerged and moved downslope into the main valleys, widening the alcoves and creating aretes. We mapped the trends represented by the emergence of lobate material from these alcoves (Figure 1c, narrow arrows) and the general trends with which they merge into



**Figure 1.** (a) Viking Orbiter image mosaic and location map. Boxes and letters indicate locations of images in Figure 2. (b) Color-coded topographic map; contour interval 400 m. (c) Location and trend of small alcoves and lobate flow-like features (narrow arrows) and broad flow trends of LVF on valley floor (wide arrows). Compiled using HRSC orbit 1395, THEMIS and MOC images. (d) Topographic profiles extending N-S across region; MOLA 128 pixels/degree gridded data set, locations in Figure 1c.



**Figure 2.** Alcoves and LVF features associated with the system shown in Figure 1. Locations in Figure 1a. (a) Four adjacent alcoves oriented convex-inward toward the plateau (bottom) with individual, convex-outward lobes extending from each alcove out into adjacent LVF. Note convergence of individual lobate extensions, compression and deformation, and convergence with the general trends of LVF on the valley floor (left). THEMIS VIS V11208010. (b) Eastward-opening adjacent alcoves showing location of multiple convex-outward concentric-ridged lobes extending, converging, deforming, and merging with valley floor LVF trends (Figure 1c). THEMIS VIS V11208010. (c) High-resolution detail of deformed ridges and pitting seen in zone of convergence of adjacent lobate flows of Figure 2b as they compress, fold and deform. MOC R1701209. (d) Outflow of two ridged lobes from alcoves (bottom left, right); lobes join major LVF (area C upper right) near convergence with B (Figure 1c). Left lobe is swept westward, forming broad arcuate folds; right lobe is increasingly compressed until it resembles a tight isoclinal fold. Both lobes ultimately merge into general LVF parallel to valley walls. MOC R1702578. (e) Lateral lobate flows converging into valley floor LVF (flows merge from areas A, D). MOC E1100205. (f) Major eastward-facing zone of multiple alcoves and converging lobate flows in distal regions of system, along edge of northernmost large mesa (G). Concentric-outward ridges extend from alcoves and progressively compress, folding and flattening as ridges deform and become part of valley floor LVF. THEMIS VIS V11208010. (g) Northern reaches of lineated valley system. LVF bifurcates (bottom right), flows around a massif forming broad up-flow collar and diffuse, down-flow wake. LVF in narrow pass between massifs is compressed. The lobate LVF extends into northern lowlands at top left. Note arcuate, piedmont-like configuration of lobe and high density of pits. THEMIS VIS V11208010.



the larger-scale LVF (wide arrows). The patterns in areas A, B, and C clearly indicate the convergence typical of glaciated valley landsystems [Eyles, 1983; Benn *et al.*, 2003] where abundant small debris-covered glaciers contribute to larger-scale valley glaciers. As the generally north-trending LVF emerges from areas A–C (Figure 1c), the individual LVFs merge into two main trends, areas D and E. LVF C merges with B (Figure 2c) and continues ~95 km to the NNW where it bifurcates around a mesa to form LVF F and G, each continuing 50–75 km to the northern lowlands. Western portions of LVF B turn west into D, merging with LVF A to produce complex fold patterns. Portions of A turn NW and extend almost 100 km to the northern lowlands.

[4] Several basic trends are observed over this region extending from A–B–C to the northern lowlands. First, valley widths in the north tend to be wider (up to a factor of 2–3) than in the southern regions. Valley wall alcoves are seen virtually throughout the system and continue to contribute material to the LVF through individual and adjacent lobate flows (Figures 2a–2e), even along the most distal large mesa (Figure 2f). The distribution of the alcoves tends to be preferentially on north pole-facing slopes (Figure 1c), but they occur with all orientations. The elevation of the LVF floor decreases by ~1500–2000 m from the proximal areas (areas A–C) to the end of the LVF in the northern lowlands (Figures 1b and 1d, profiles B–C–D–E). LVF slopes tilt toward the north, are less than 1° throughout most of the LVF floor, but increase rapidly to >1–2° in the northern 25–50 km of the LVF, adjacent to the lowlands. These latter areas are characterized by piedmont-like lobes extending into the northern lowlands between mesas (Figure 2g). These latter features are very reminiscent of the fronts of terrestrial glaciers in terms of their lobate nature and relatively steep front, and in many cases are characterized by flow lines, pits and moraine-like ridges (Figure 2g).

[5] These general trends are accompanied by what appears to be a progressive fragmentation or “mesa-ization” of the extensive upland plateau. The large mesa between LVF areas A and B (Figures 1a and 1b) is barely connected to the plateau itself at its southern end, but to the north, widening of the valleys and enhancement of the alcoves has fragmented plateau segments into smaller and smaller mesas. Although the summits of the three mesas directly north of the plateau are the same elevation (Figures 1b and 1d, profile B), the size of the mesas has decreased substantially. This trend is consistent with the effects of the interpreted valley glaciation, in that the debris-covered glaciers in the alcoves along the margins erode progressively into walls, causing their retreat and widening over time. The lateral migration can form aretes and ultimately cut headward through narrow parts of the plateaus to form isolated mesas.

[6] In summary, examination of new spacecraft data shows compelling evidence for an integrated picture of LVF formation, with a significant role being played by regional valley glaciation [e.g., Eyles, 1983; Benn *et al.*, 2003] in the modification of the valley systems [see also Kargel, 2004]. We find evidence for: 1) localized alcoves, which are the sources of dozens of narrow, lobate concentric-ridged flows interpreted to be remnants of debris-covered glaciers; 2) depressions in many current alcoves, suggesting loss of material from relict ice-rich accumulation zones; 3) narrow

pointed plateau ridge remnants between alcoves, similar to glacially eroded aretes; 4) horseshoe-shaped ridges up-valley and upslope of topographic obstacles (Figure 2g); 5) convergence and merging of LVF fabric in the down-valley direction, and deformation, distortion and folding of LVF in the vicinity of convergence, all consistent with glacial-like, down-valley flow; 6) pits and elongated troughs in LVF, particularly in areas where LVF is distorted, suggesting localized preferential sublimation of an ice-rich substrate lying below a rocky sublimation till; 7) distinctive lobe-shaped termini where the LVF emerges into the northern lowlands, with associated pitting; we interpret these to be the location of the relict glacial system margin. This assemblage of features can be traced and mapped in an integrated fashion (Figure 1c) for over 200 km in length, and covers an area (~30,000 km<sup>2</sup>) ~10 times that of the Antarctic Dry Valleys. The extensive development of lineated valley occurrences with very similar characteristics in fretted valleys in the DPM region suggests that glaciation may have been instrumental in the modification of the dichotomy boundary over an area as large as several million km<sup>2</sup>. The age of the LVF in the DPM region has been estimated as Amazonian [e.g., McGill, 2000; Mangold, 2003]. The process of glaciation has clearly contributed to the erosion of the dichotomy boundary, broadening and extending valleys, and creating isolated mesas from glacial erosional activity, suggesting retreat over distances of many hundreds of kilometers.

[7] **Acknowledgment.** Thanks are extended to the HRSC science and engineering team and to NASA for support of this research under MDAP (to JWH) and the PGGURP (to ALN).

## References

- Baker, V. R. (1982), *The Channels of Mars*, 198 pp., Univ. Tex. Press, Austin.
- Benn, D. I., M. P. Kirkbride, L. A. Owen, and V. Brazier (2003), Glaciated valley landsystems, in *Glacial Landsystems*, edited by D. J. A. Evans, pp. 372–406, Edward Arnold, London.
- Carr, M. H. (1995), The Martian drainage system and the origin of networks and fretted channels, *J. Geophys. Res.*, **100**, 7479–7507.
- Carr, M. H. (2001), Mars Global Surveyor observations of Martian fretted terrain, *J. Geophys. Res.*, **106**, 23,571–23,593.
- Eyles, N. (1983), The glaciated valley landsystem, in *Glacial Geology: An Introduction for Engineers and Earth Scientists*, edited by N. Eyles, pp. 91–110, Elsevier, New York.
- Kargel, J. S. (2004), *Mars: A Warmer Wetter Planet*, 557 pp., Springer, New York.
- Lucchitta, B. K. (1984), Ice and debris in the fretted terrain, Mars, *Proc. Lunar Planet. Sci. Conf. 14th*, Part 2, *J. Geophys. Res.*, **89**, suppl., B409–B418.
- Mangold, N. (2003), Geomorphic analysis of lobate debris aprons on Mars at Mars Orbiter Camera scale: Evidence for ice sublimation initiated by fractures, *J. Geophys. Res.*, **108**(E4), 8021, doi:10.1029/2002JE001885.
- McGill, G. E. (2000), Crustal history of north central Arabia Terra, Mars, *J. Geophys. Res.*, **105**, 6945–6959.
- Sharp, R. P. (1973), Mars: Fretted and chaotic terrains, *J. Geophys. Res.*, **78**, 4073–4083.
- Squyres, S. W. (1978), Martian fretted terrain: Flow of erosional debris, *Icarus*, **34**, 600–613.
- J. W. Head, Department of Geological Sciences, Brown University, Providence, RI 02912, USA. (james\_head@brown.edu)
- D. R. Marchant, Department of Earth Sciences, Boston University, Boston, MA 02215, USA.
- A. L. Nahm, Department of Geological Sciences, University of Colorado, Boulder, CO 80309, USA.
- G. Neukum, Institut für Geologische Wissenschaften, Freie Universität Berlin, Malteserstrasse 74-100, D-12249 Berlin, Germany.