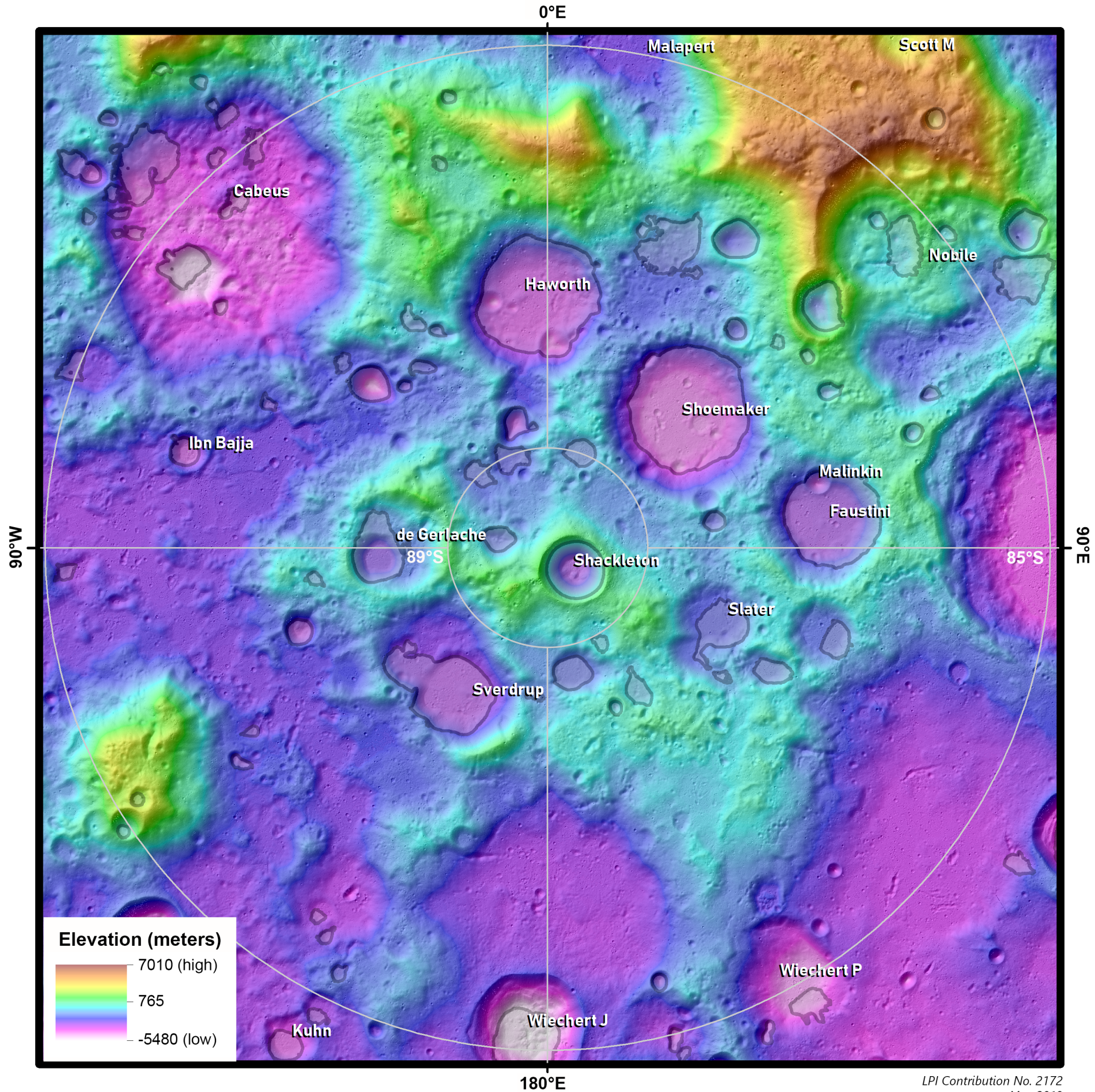
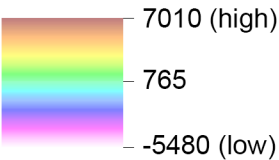


Topography and Permanently Shaded Regions (PSRs) of the Moon's South Pole (85°S to Pole)

Polarstereographic Projection (scale true at pole)
Scale: 1:1,343,325



Elevation (meters)



180°E

LPI Contribution No. 2172
May 2019



Regional Planetary Image Facility
Lunar and Planetary Institute
Houston, Texas, USA

Data sources:

Lunar Reconnaissance Orbiter Lunar Orbiter Laser Altimeter (LOLA) 20-m elevation product [NASA Goddard Space Flight Center (GSFC)] over derived hillshade with solar azimuth 45°W and solar elevation 45°; shapefile of digitized LOLA large PSRs (gray outlines) [NASA GSFC; Arizona State University]