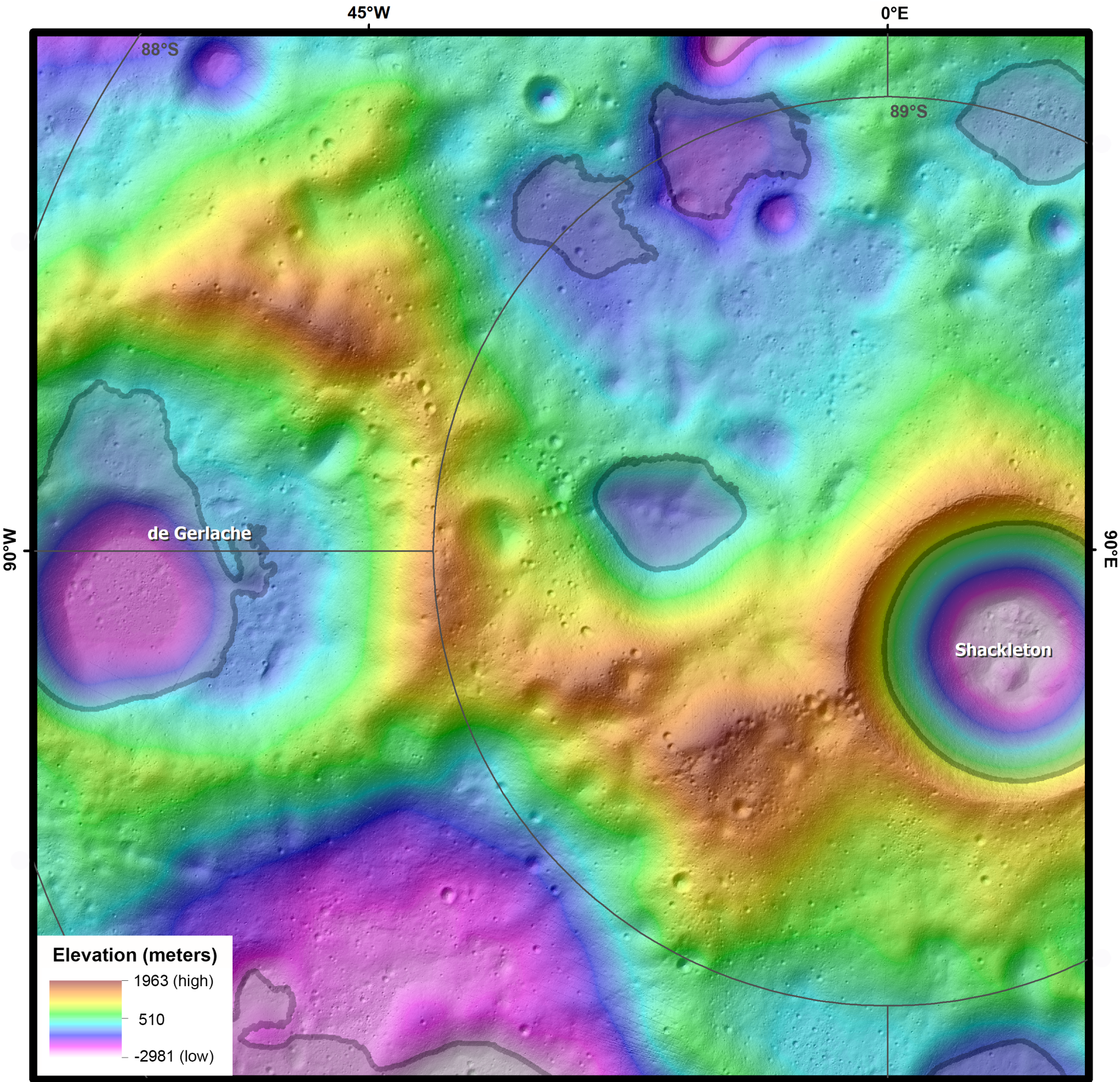
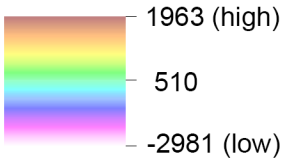


# Topography and Permanently Shaded Regions (PSRs) of the Moon's South Polar Ridge

Polarstereographic Projection (scale true at pole)  
Scale: 1:300,000



## Elevation (meters)



**Regional Planetary Image Facility**  
Lunar and Planetary Institute  
Houston, Texas, USA

## Data sources:

Lunar Reconnaissance Orbiter Lunar Orbiter Laser Altimeter (LOLA) 5-m elevation product [NASA Goddard Space Flight Center (GSFC)] over derived hillshade with solar azimuth 45°W and solar elevation 45°; shapefile of digitized LOLA large PSRs (gray outlines) [NASA GSFC; Arizona State University]

LPI Contribution No. 2178  
May 2019