

10022
Ilmenite Basalt (high K)
95.6 grams



Figure 1: Photo of 10022,31 showing vesicles (~2 mm). Cube is 1 cm. NASA S76-25940..

Introduction

Lunar sample 10022 is a fine-grained, vesicular, high-K ilmenite basalt (figure 1). 10022 was collected as part of the contingency sample collected from the area between the LM and the flag. It was photographed before collection on the lunar surface and the lunar orientation is known (see Schmitt et al. 1970). An age of 3.6 b.y has been determined and it has been exposed to cosmic rays for ~500 m.y.

Petrography

Schmitt et al. (1970) termed 10022 a “fine-grained, vesicular, plumose, subophitic, olivine basalt.” Weill et al. (1970) described it as “fine-grained, holocrystalline, vesicular basalt”. Beatty and Albee (1978) termed the texture “microporphyrritic”, because the pyroxene grains were about twice that of the groundmass minerals (average grain size ~150 microns). The texture of 10022 is different from that of any of the other Apollo 11 basalt. It is not clear whether the large pyroxene grains are true phenocrysts or not (figure 2).

Vesicles (gas bubbles) in 10022 are perfectly round; 1 - 3 mm in size.

Mineralogy

Olivine: Weill et al. (1970), Kushiro and Nakamura (1970) and Beatty and Albee (1978) reported minute olivine grains included within augite. Olivine in 10022 is chemically zoned (Fo_{71-41}).

Pyroxene: Large augite grains have pigeonite cores (figure 3). Kushiro and Nakamura (1970) determined the composition of coexisting augite-pigeonite pairs.

Plagioclase: Smith et al. (1970) determined the composition of plagioclase An_{77-71} . Kushiro and Nakamura (1970) found a range An_{81-73} . Weill et al. (1970) remarked on the apparent non-stoichiometry of lunar plagioclase.

Ilmenite: Ilmenite in 10022 has both a tabular and “thin platy” habit as though there were two generations



Figure 2: Photomicrographs of thin section 10022,40. Top is plane polarized light, bottom is crossed nicols. NASA S70-49196-197. Field of view is 2.5 mm.

(Cameron 1970). Smith et al. (1970) found that ilmenite had variable MgO content (0.1 to 3.4%).

Armalcolite: Anderson et al. (1970) and Smith et al. (1970) reported the chemical composition of armalcolite in 10022.

Chemistry

Figures 4 and 5 and table 1 give the composition of 10022. It has a high content of trace elements.

Mineralogical Mode for 12022

	Kushiro and Nakamura 70	Beaty and Albee 78	Weill et al. 1970
Olivine		0.1	tr.
Pyroxene	48.9	52.6	55
Plagioclase	15.6	21.6	29
Ilmenite	26.3	14.1	15
mesostasis	8.6		
silica	0.6	0.8	
troilite		0.6	1
phosphate		0.2	

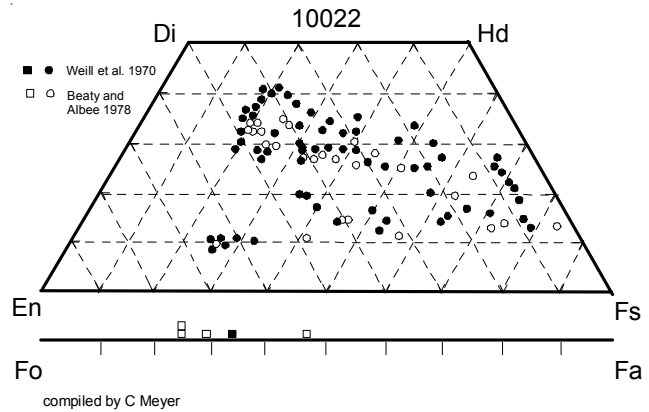


Figure 3: Pyroxene and olivine composition of 10022 (data replotted from Weill et al. 1970 and Beaty and Albee 1978).

Radiogenic age dating

Turner (1970) dated 10022 by Ar/Ar plateau technique at 3.59 ± 0.06 b.y. (figure 6) and Geiss et al. (1977) also obtained a low temperature plateau of 3.58 b.y.

Cosmogenic isotopes and exposure ages

Turner et al. (1970) and Guggisberg et al. (1979) determined ^{38}Ar exposure ages 380 m.y. and 520 m.y., respectively. Eberhardt et al. (1970) calculated 420 m.y. from data by Funkhouser et al. (1970).

Other Studies

Oxygen isotopes were reported for mineral separates of 10022 by Onuma et al. (1970).

Funkhouser et al. (1970) and Bogard et al. (1971) reported the abundance and isotopic composition of rare gasses from 10022.

Helsley (1970) reported magnetic properties.

Grove and Beaty (1980) performed experiments related to high-K Apollo 11 basalts.

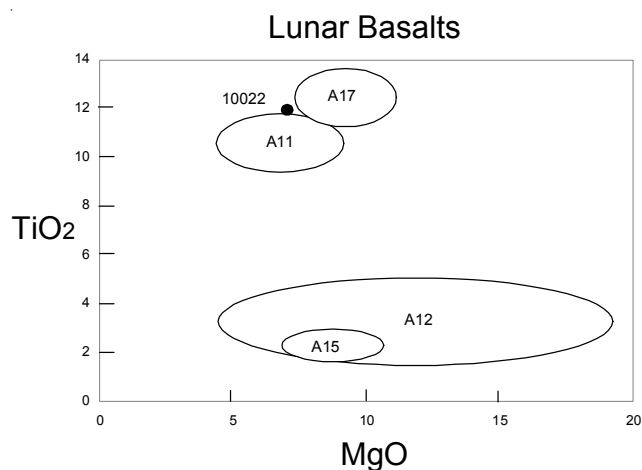


Figure 4: Composition of 10022 compared with that of other Apollo lunar samples.

Processing

Apollo 11 samples were originally described and cataloged in 1969 and “re-cataloged” by Kramer et al. (1977). There are 9 thin sections.

List of Photo #s for 10022

- S69-47623 – 47624 TS B&W
- S69-45210 – 213 mug
- S69-45523 – 527
- S69-45380
- S69-45560
- S69-46328
- S70-48942 – 944 TS
- S70-49196 – 197 TS color
- S74-27029 ,108 display
- S76-25426 – 430 ,108
- S76-25938 – 943 ,31
- S76-26297 reflected TS
- S76-26311 ,57

References for 10022

Anderson A.T. and 10 others (1970) Armalcolite: A new mineral from the Apollo 11 samples. *Proc. Apollo 11 Lunar Sci. Conf.* 55-63.

Beaty D.W. and Albee A.L. (1978) Comparative petrology and possible genetic relations among the Apollo 11 basalts. *Proc. 9th Lunar Planet. Sci. Conf.* 359-463.

Bogard D.D., Funkhouser J.G., Schaeffer O.A. and Zahringer J. (1971) Noble gas abundances in lunar material-cosmic ray spallation products and radiation ages from the Sea of Tranquillity and the Ocean of Storms. *J. Geophys. Res.* **76**, 2757-2779.

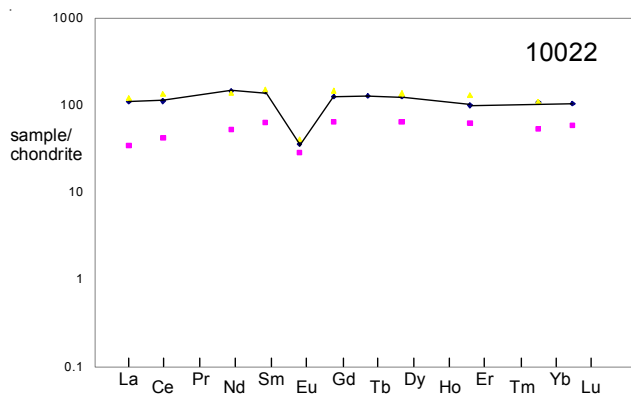


Figure 5: Normalized rare-earth-element composition for high-K basalt 10022 (the line) compared with that of low-K basalt 10020 and high-K basalt 10049 (the dots) (data from Haskin et al. 1970).

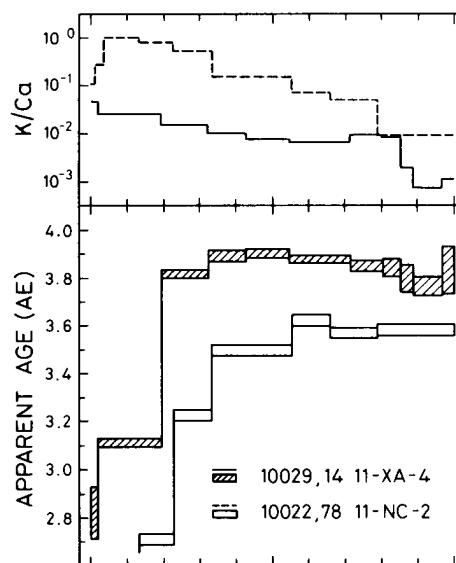


Figure 6: Ar/Ar age of high K vs low K Apollo 11 basalts (Guggisberg et al. 1979).

Cameron E.N. (1970) Opaque minerals in certain lunar rocks from Apollo 11. *Proc. Apollo 11 Lunar Sci. Conf.* 221-245.

Eberhardt P., Geiss J., Grogler N., Krahenbuhl U., Morgeli M. and Stettler A. (1971a) Potassium-Argon age of Apollo 11 rock 10003. *Earth Planet. Sci. Lett.* **11**, 245-246.

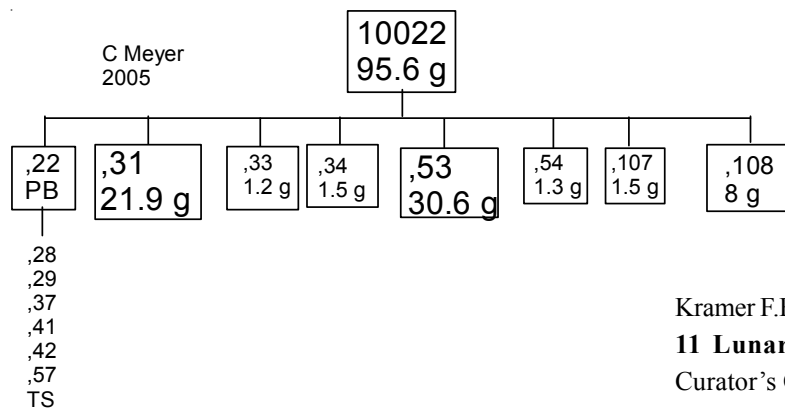
Summary of Age Data for 10022

	Rb/Sr	Ar/Ar
Turner 1970		3.59 ± 0.06 b.y.
Geiss et al. 1977		(3.58 ± 0.04)

Table 1. Chemical composition of 10022.

reference weight	LSPET69	Rose70	Goles70	Haskin70	Beaty78	Gopalan70	Hurley70	Murthy70
SiO ₂ %	43	(a) 40.1	(b) 41.5	(c)	40.93	(d)		
TiO ₂	11	(a) 12.2	(b) 11.8	(c)	11.72	(d)		
Al ₂ O ₃	7.7	(a) 8.6	(b) 8.5	(c)	8.01	(d)		
FeO	21	(a) 18.9	(b) 20.2	(c) 18.6	(c) 18.66	(d)		
MnO	0.26	(a) 0.25	(b) 0.23	(c) 0.22	(c) 0.23	(d)		
MgO	6.5	(a) 7.74	(b) 6.8	(c)	8.29	(d)		
CaO	9	(a) 10.7	(b) 10.4	(c)	11.36	(d)		
Na ₂ O	0.4	(a) 0.91	(b) 0.48	(c)	0.48	(d)		
K ₂ O	0.21	(a) 0.3	(b)	0.26	(c) 0.22	(d)		0.27 (e)
P ₂ O ₅					0.1	(d)		
S %					0.31	(d)		
sum					(c)			
Sc ppm			76.6	(c) 76	(c)			
V	36	(a)	89	(c)				
Cr	2800	(a) 2531	(b) 2250	(c) 2254	(c)			
Co	15	(a)	29.8	(c) 29	(c)			
Ni	320	(a)						
Cu				5.1	(c)			
Zn				2.9	(c)			
Ga				2.9	(c)			
Ge ppb								
As				0.063	(c)			
Se				0.7	(c)			
Rb				5.7	(c)	5.66	6	5.57 (e)
Sr	110			164	(c)	165.9	173	163 (e)
Y	230							
Zr	1000	300	(b)					
Nb								
Mo								
Ru								
Rh								
Pd ppb								
Ag ppb				2.3	(c)			
Cd ppb								
In ppb				7.8	(c)			
Sn ppb								
Sb ppb				5.6	(c)			
Te ppb								
Cs ppm				0.2	(c)			
Ba	100		220	(c) 228	(c)			277 (e)
La			25.9	(c) 26.4	26.4	(c)		
Ce			81	(c) 68	69	(c)		
Pr								
Nd				66	64	(c)		
Sm			20.3	(c) 21.2	21.2	(c)		
Eu			2.15	(c) 2.04	1.98	(c)		
Gd				25	22.9	(c)		
Tb			5.7	(c) 4.7	4.31	(c)		
Dy				31.2	29	(c)		
Ho			8.2	(c)				
Er				16	15.6	(c)		
Tm								
Yb	7		21	(c) 17.7	17.3	(c)		
Lu			2.69	(c) 2.55	2.39	(c)		
Hf			19.6	(c) 21.5		(c)		
Ta			1.8	(c) 1		(c)		
W ppb								
Re ppb								
Os ppb								
Ir ppb								
Pt ppb								
Au ppb				0.1	(c)			
Th ppm								
U ppm			0.67	(c)				

technique: (a) OES, (b) semimicro XRF, (c) INAA, (d) elec. Probe, (e) IDMS



Funkhauser J.G., Schaeffer O.A., Bogard D.D. and Zahringer J. (1970) Gas analysis of the lunar surface. *Proc. Apollo 11 Lunar Sci. Conf.* 1111-1116.

Geiss J., Eberhardt P., Grogler N., Guggisbert S., Maurer P. and Stettler A. (1977) Absolute time scale of lunar mare formation and filling. *Phil. Trans. Roy. Soc. London* **A285**, 151-158.

Grove T.L. and Beaty D.W. (1980) Classification, experimental petrology and possible volcanic histories of the Apollo 11 high-K basalts. *Proc. 11th Lunar Planet. Sci. Conf.* 149-177.

Guggisberg S., Eberhardt P., Geiss J., Grogler N., Stettler A., Brown G.M. and Pecket A. (1979) Classification of the Apollo-11 basalts according to Ar³⁹-Ar⁴⁰ ages and petrological properties. *Proc. 10th Lunar Planet. Sci. Conf.* 1-39.

Haskin L.A., Allen R.O., Helmke P.A., Paster T.P., Anderson M.R., Korotev R.L. and Zweifel K.A. (1970) Rare earths and other trace elements in Apollo 11 lunar samples. *Proc. Apollo 11 Lunar Sci. Conf.* 1213-1231.

Helsley C.E. (1970) Magnetic properties of lunar samples 10022, 10069, 10084 and 10085. *Proc. Apollo 11 Lunar Sci. Conf.* 2213-2219.

Hurley P.M. and Pinson W.H. (1971) Whole-rock Rb-Sr isotopic age relationships in Apollo 11 lunar samples. *Proc. Apollo 11 Lunar Sample Conference* 1311-1315.

James O.B. and Jackson E.D. (1970) Petrology of the Apollo 11 ilmenite basalts. *J. Geophys. Res.* **75**, 5793-5824.

Kramer F.E., Twedell D.B. and Walton W.J.A. (1977) **Apollo 11 Lunar Sample Information Catalogue** (revised). Curator's Office, JSC 12522

Kushiro I. and Nakamura Y. (1970) Petrology of some lunar crystalline rocks. *Proc. Apollo 11 Lunar Sci. Conf.* 607-626.

LSPET (1969) Preliminary examination of lunar samples from Apollo 11. *Science* **165**, 1211-1227.

Murthy V.R., Evensen N.M. and Coscio M.R. (1970) Distribution of K, Rb, Sr, and Ba and Rb-Sr isotopic relations in Apollo 11 lunar samples. *Proc. Apollo 11 Lunar Sci. Conf.*, 1393-1406.

Onuma N., Clayton R.N. and Mayeda T. (1970) Apollo 11 rocks: Oxygen isotope fractionation between minerals and an estimate of the temperature of formation. *Proc. Apollo 11 Lunar Sci. Conf.* 1429-1434.

Rose H.J., Cuttitta F., Dwornik E.J., Carron M.K., Christian R.P., Lindsay J.R., Ligon D.T. and Larson R.R. (1970b) Semimicro X-ray fluorescence analysis of lunar samples. *Proc. Apollo 11 Lunar Sci. Conf.* 1493-1497.

Schmitt H.H., Lofgren G., Swann G.A. and Simmons G. (1970) The Apollo 11 samples: Introduction. *Proc. Apollo 11 Lunar Science Conf.* 1-54.

Smith J.V., Anderson A.T., Newton R.C., Olsen E.J., Wyllie P.J., Crewe A.V., Isaacson M.S. and Johnson D. (1970) Petrologic history of the moon inferred from petrography, mineralogy and petrogenesis of Apollo 11 rocks. *Proc. Apollo 11 Lunar Sci. Conf.* 897-925.

Turner G. (1970a) Argon-40/argon-39 dating of lunar rock samples. *Proc. Apollo 11 Lunar Sci. Conf.* 1665-1684.

Weill D.F., McCallum I.S., Bottinga Y., Drake M.J., McKay G.A. (1970) Mineralogy and petrology of some Apollo 11 igneous rocks. *Proc. Apollo 11 Lunar Sci. Conf.* 937-955.