

10046
Regolith Breccia
663 grams

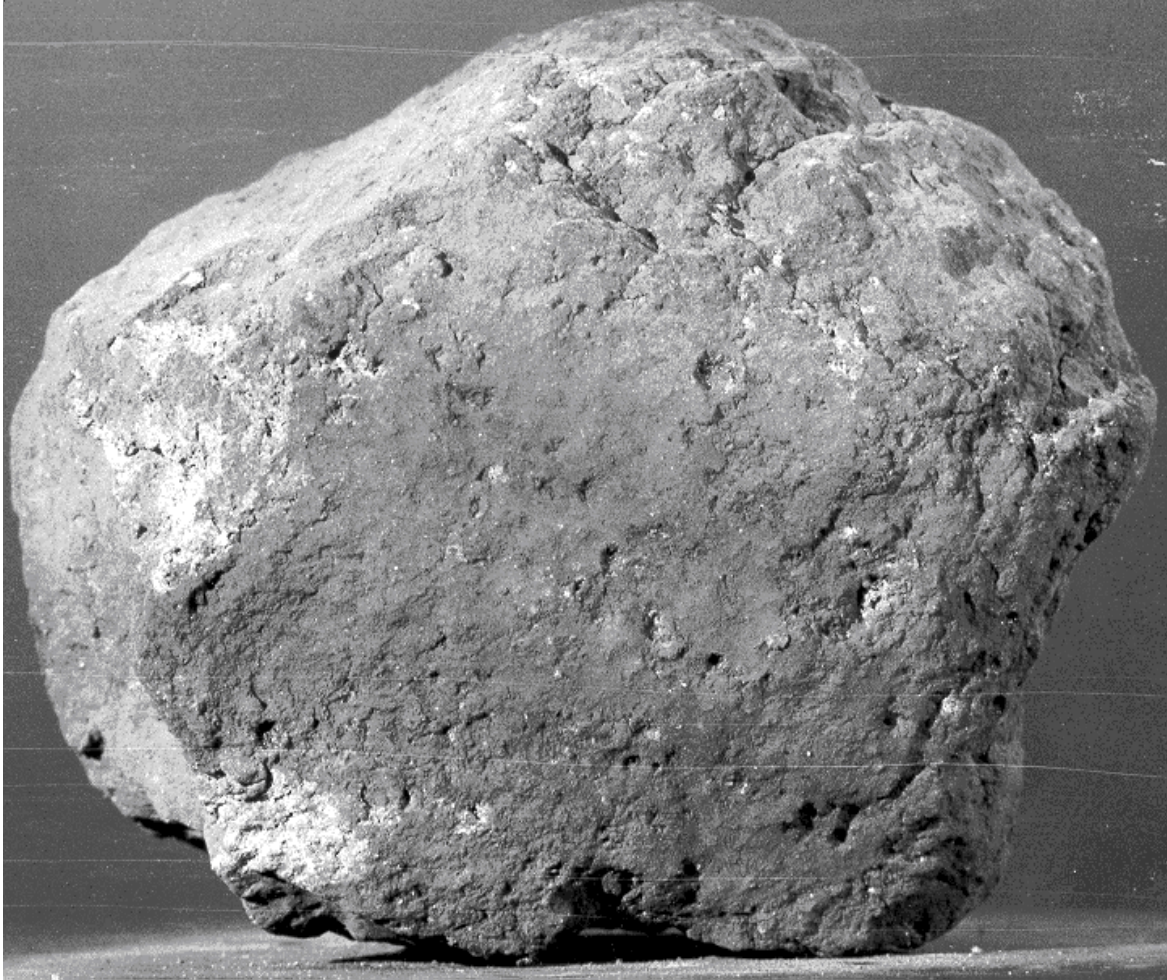


Figure 1: Photo of 10046 before processing. NASA S69-45628. Sample is 10 cm across.

Introduction

Kramer et al. (1977) and Fruland (1983) describe 10046 as a friable, dark grey regolith breccia (figure 1). Phinney et al. (1976) reported that 10046 “contains a large number of agglutinates”.

10046 was photographed before collection on the lunar surface (see Schmitt et al. 1970 and Sutton and Schaber 1971) and the lunar orientation is known. Bloch et al. (1971) reported on two large micrometeorite craters.

Petrography

Lovering and Ware (1970) described 10046 as a breccia composed of lunar volcanic rock fragments, fragments

of minerals from the rocks, spherules and irregular fragments of glass set in a very fine-grained matrix which seems to be glass or devitrified glass. Fruland (1977) found that “the matrix components display a seriate grain size distribution.” Schmitt et al. (1970) reported the bulk density as 2.45 g/cm³, while Anderson et al. (1970) and Chung et al. (1971) determined 2.21 g/cm³. Porosity was determined as 25 % (Phinney et al. 1976).

Agrell et al. (1970), Lovering and Ware (1970) and Chao et al. (1970) note that glassy spherules, occasionally broken, are conspicuous in all the Apollo 11

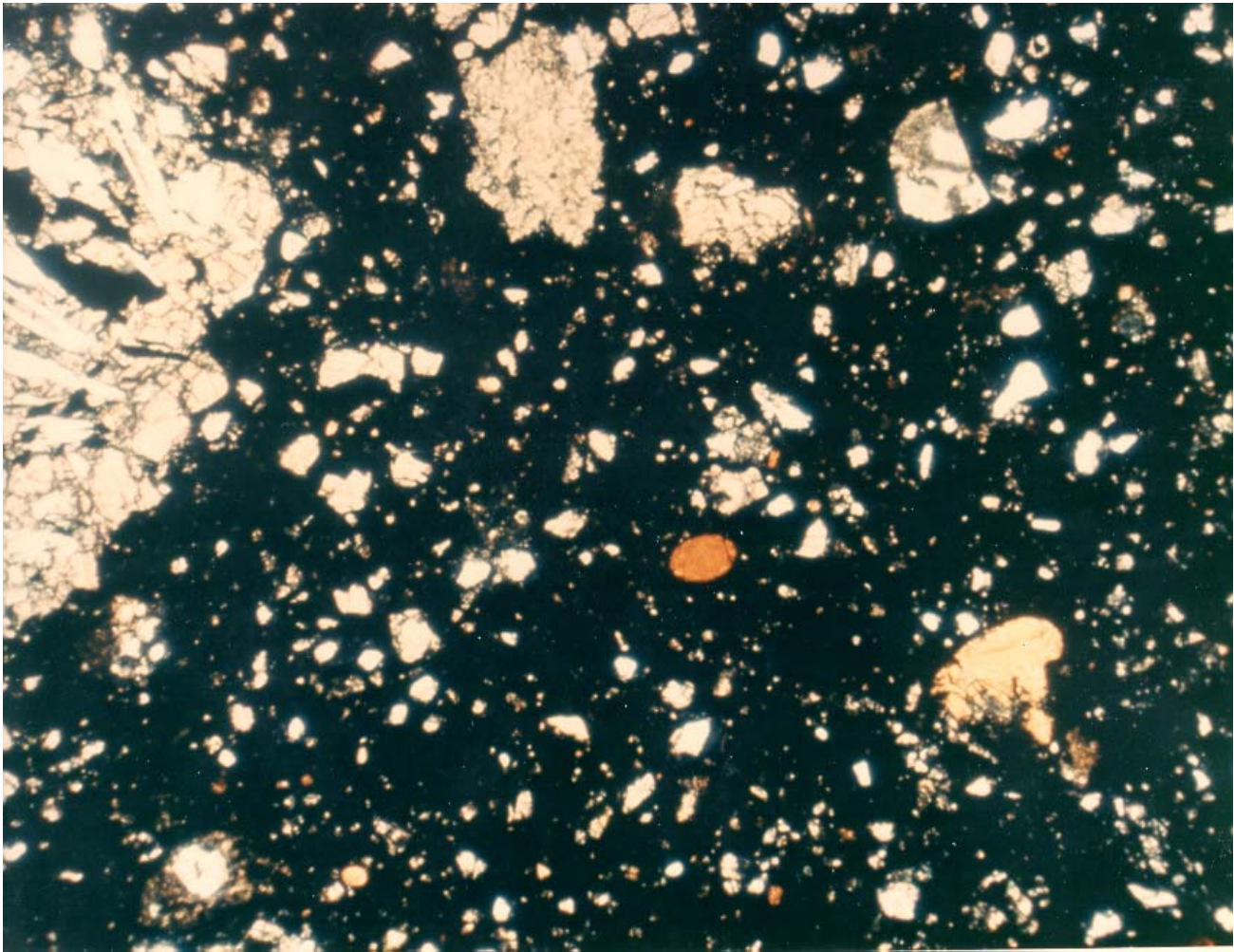


Figure 2: Thin section photomicrograph of 10046,65 showing matrix with orange glass bead and rock fragments as clasts. NASA S70-19511. Scale is 2.5 mm.

microbreccias. In thin section 10046,48 they also noted thin veins of yellow glass and a variety of other glass. However, Essene et al. (1970) were the first to understand the importance of the red-brown glass spheres (figure 2, table 2).

King et al. (1970) studied a small basalt fragment in 10046 (figure 3).

Mineralogy

K-spar: Agrell et al. (1970) reported an intergrowth of “ternary feldspar” with $\sim\text{Or}_{77}\text{Ab}_{21}\text{An}_2$ with silica “probably tridymite”.

Glass spheres: Essene et al. (1970), Lovering and Ware (1970), von Engelhardt et al. (1970) and others reported the composition of red-brown glass spheres in 10046 (table 2). It turns out that these glass spheres have a life of their own – see section on 74220.

Glass: Keil et al. (1970), Chao et al. (1970) and Dence et al. (1970) give the compositions of some “re-crystallized” glass particles in 10046.

Chemistry

The rare earth element content of this regolith breccia is substantially higher than for the soil 10084 – see figure 4.

Morrison et al. (1970) reported relatively high values of N, F, Cl and Zn (table 1). Using the Kjeldahl method, Muller (1972) also found high (131 ppm) values for chemically bound nitrogen in a chip of 10046. Lovering and Hughes (1971) reported the concentration of Re and Os.

Eberhardt et al. (1972) determined the trapped solar wind gases in 10046. Funkhouser et al. (1971) studied the types of gas that were released on simple

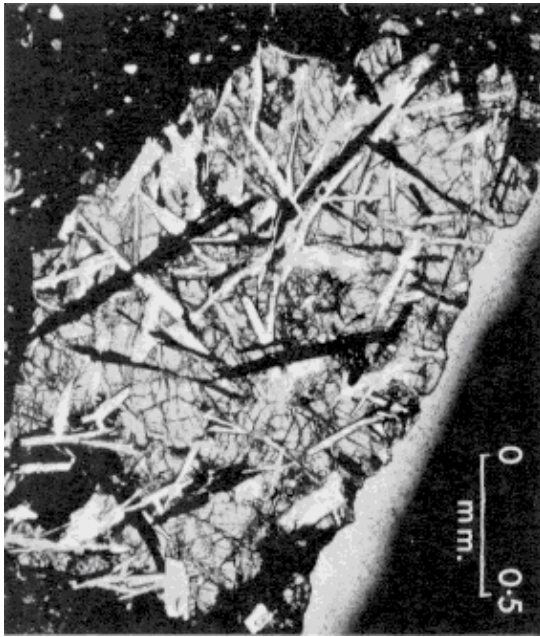


Figure 3: Thin section photo of basalt clast in 10046 (from King et al. 1970).

crushing of 10046 (H_2 , N_2 , CH_4 , He and Ar) and the isotopic ratios of He and Ar. Eberhardt et al. (1972) studied the temperature release for different grain size of ilmenite, showing that ilmenite had superior trapping power (figure 5). Hintenberger et al. (1971, 1975) also determined the rare gas abundance and isotopic ratios.

Eugster and Bernas (1971) studied the isotopic composition of Li, B, Mg and Ti.

Friedman et al. (1970) determined the gas content evolved from heating 10046 in vacuum and in O_2 . They found 100 ppm hydrogen with low D/H ratio and 200 ppm C. The total organic carbon content of 10046 was also determined by hydrogen flame ionization pyrolysis (Ponnampuruma et al. 1970).

Anderson et al. (1970) and Chung et al. (1971, 1972) determined the compressibility, seismic velocity and other physical properties of 10046.

Processing

Apollo 11 samples were originally described and cataloged in 1969 and “re-cataloged” by Kramer et al. (1977). According to Kramer et al. this breccia is said to have first been studied in the “Bio Prep Lab” and as such may have been originally “contaminated” in the Bio-Prep Lab. It was later sawn and chipped in the SSPL.

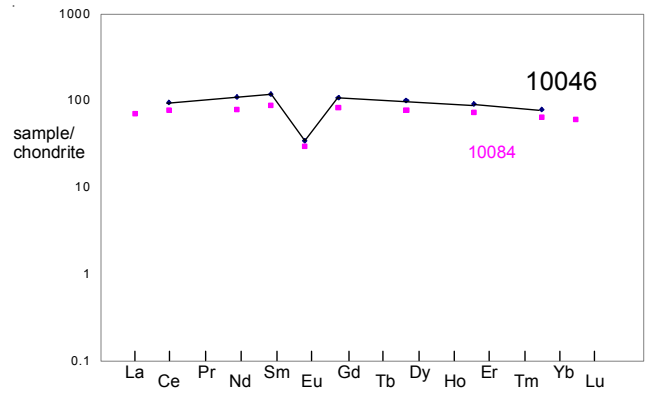


Figure 4: Normalized rare earth element diagram for breccia 10046 compared with soil 10084 (data from Philpotts et al. 1970).

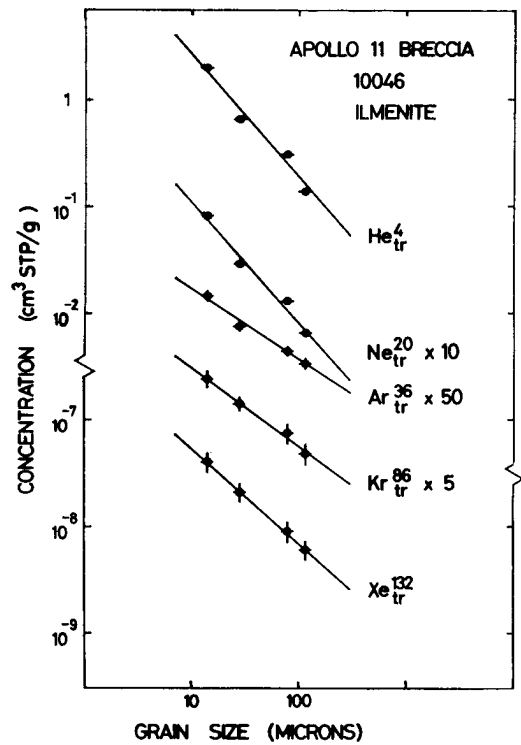


Figure 5: Fine grain ilmenite separates from breccia 10046 contain more rare gas than coarser fraction (from Eberhardt et al. 1972).

List of Photo #s for 10046

- S69-45621 mug shot
 - S69-45657
 - S69-59843 TS
 - S75-33425
- See photo of thin section in Lovering and Ware (1970).

Table 1. Chemical composition of 10046.

reference weight	Philpotts70	Kharkar71	Morrison 70	Wasson70	Lovering71
SiO ₂ %	311 mg		44.1	(c)	
TiO ₂		9	(b) 8.34	(c)	
Al ₂ O ₃			11.7	(c)	
FeO		15.6	(b) 17	(c)	
MnO		0.21	(b) 0.21	(c)	
MgO			9.1	(c)	
CaO		12.3	(b) 13.7	(c)	
Na ₂ O		0.5	(b) 0.47	(c)	
K ₂ O	0.195	(a)	0.2	(c)	
P ₂ O ₅			0.23	(c)	
S %					
sum					
Sc ppm		72	(b) 64	(c)	
V			68	(c)	
Cr		2150	(b) 2100	(c)	
Co		27	(b) 42	(c)	
Ni					
Cu			9.7	(c)	
Zn			30	(c)	
Ga			4.9	(c)	
Ge ppb				390	(d)
As			50	(c)	
Se			400	(c)	
Rb	4.22	(a)	3.6	(c)	
Sr	165	(a)	170	(c)	
Y			190	(c)	
Zr			620	(c)	
Nb			38	(c)	
Mo			0.7	(c)	
Ru					
Rh					
Pd ppb			100	(c)	
Ag ppb			20	(c)	
Cd ppb			800	(c)	
In ppb			80	(c) 16	(d)
Sn ppb					
Sb ppb			5	(c)	
Te ppb					
Cs ppm			0.2	(c)	
Ba	219	(a)	280	(c)	
La		18.6	(b) 23	(c)	
Ce	58	(a) 52.3	(b) 67	(c)	
Pr			20	(c)	
Nd	50.2	(a)	60	(c)	
Sm	17.7	(a) 9.7	(b) 20	(c)	
Eu	1.94	(a) 2	(b) 2	(c)	
Gd	21.5	(a)	20	(c)	
Tb			4.5	(c)	
Dy	24.9	(a) 19.9	(b) 30	(c)	
Ho			9	(c)	
Er	14.8	(a)	23	(c)	
Tm			1.6	(c)	
Yb	13	(a) 10.2	(b) 20	(c)	
Lu		1.93	(b) 1.8	(c)	
Hf		13.4	(b) 11	(c)	
Ta		1.4	(b) 1.7	(c)	
W ppb			0.35	(c)	
Re ppb					0.67 (d)
Os ppb					7.6 (d)
Ir ppb				11.6	(d)
Pt ppb					
Au ppb				2.8	(d)
Th ppm			2.8	(c)	
U ppm			0.58	(c)	

technique: (a) IDMS, (b) INAA, (c) various, (d) RNAA

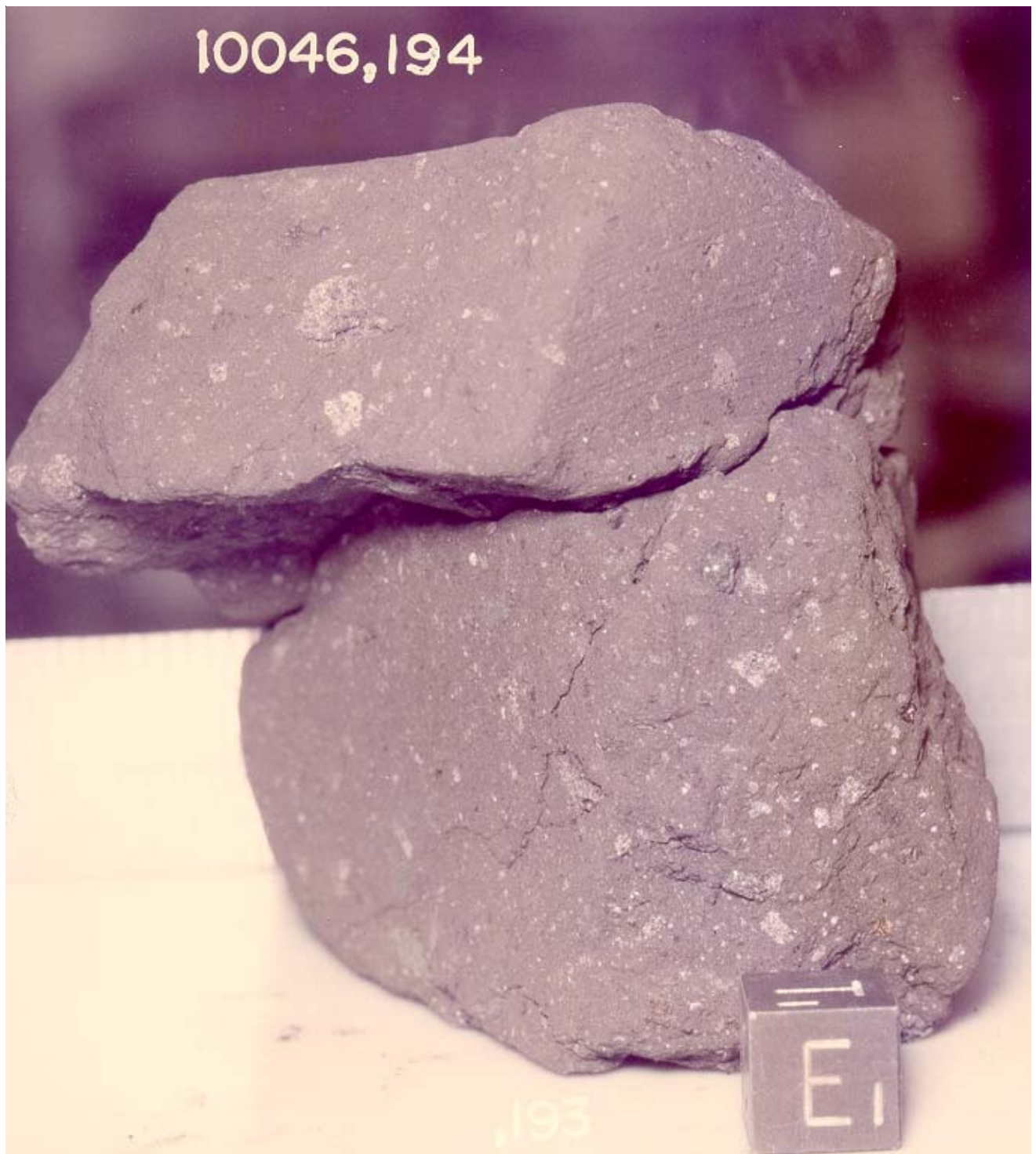


Figure 6: Photo of 10046,194 and ,193 showing internal texture. Cube is 1 cm. NASA S75-33424.

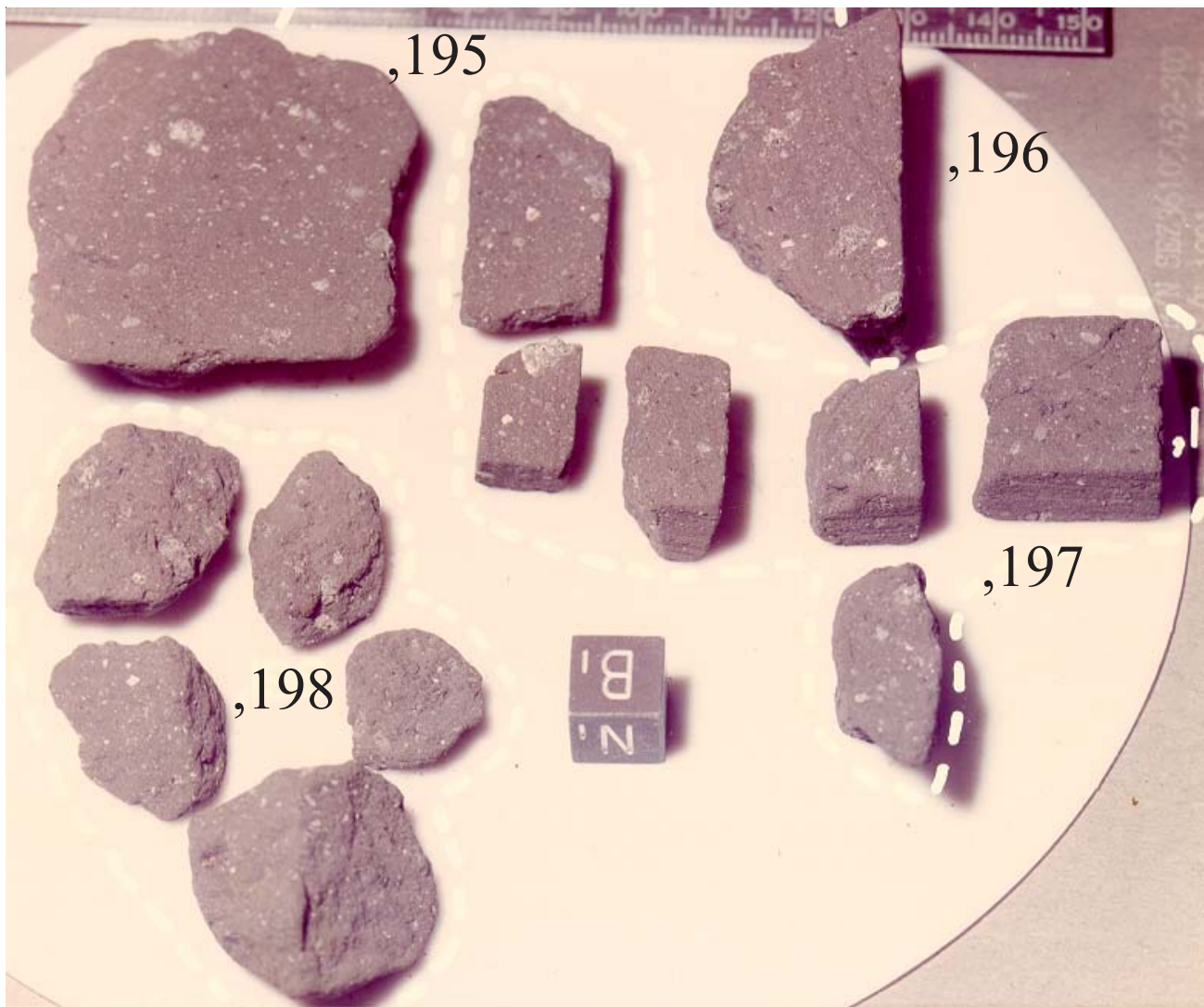


Figure 7: Group photo of pieces of 10046. NASA S75-33599. Cube is 1 cm.

Table 2. Composition of red-brown glass spheres (A11).

	Essene 70 10046	Lovering70 10046	Engelhardt70 10065		Delano81	Shearer93	Chao70	Keil 70	Reid 70 10018
#	19	7	1	1	75	3	10	22	1
SiO ₂	33.81	39.17	34.56	34.88	37.3	38.14	39	37.2	37.6
TiO ₂	10.05	10.01	9.73	9.83	10	9.83	9.8	10.7	10.04
Al ₂ O ₃	5.24	5.11	5.36	5.28	5.68	4.46	5.1	5.2	6.49
FeO	23.41	23.42	24.21	23.99	23.7	24.28	23.2	24.7	24.3
MnO	0.33	0.35	0.22	0.18		0.26		0.3	
MgO	13.84	14.17	12.96	13.12	14.3	14.7	13.4	13.1	14.3
CaO	7.41	7.22	7.03	7.06	7.62	7.22	7.5	7.7	7.65
Na ₂ O	0.28	0.27	0.37	0.4	0.31	0.21	0.2	0.27	0.36
K ₂ O	0.07	0.05	0.05	0.05		0.05	0.12	0.04	0.14
Cr ₂ O ₃	0.53	0.56			0.63	0.68	0.57	0.61	0.54
						+ trace			

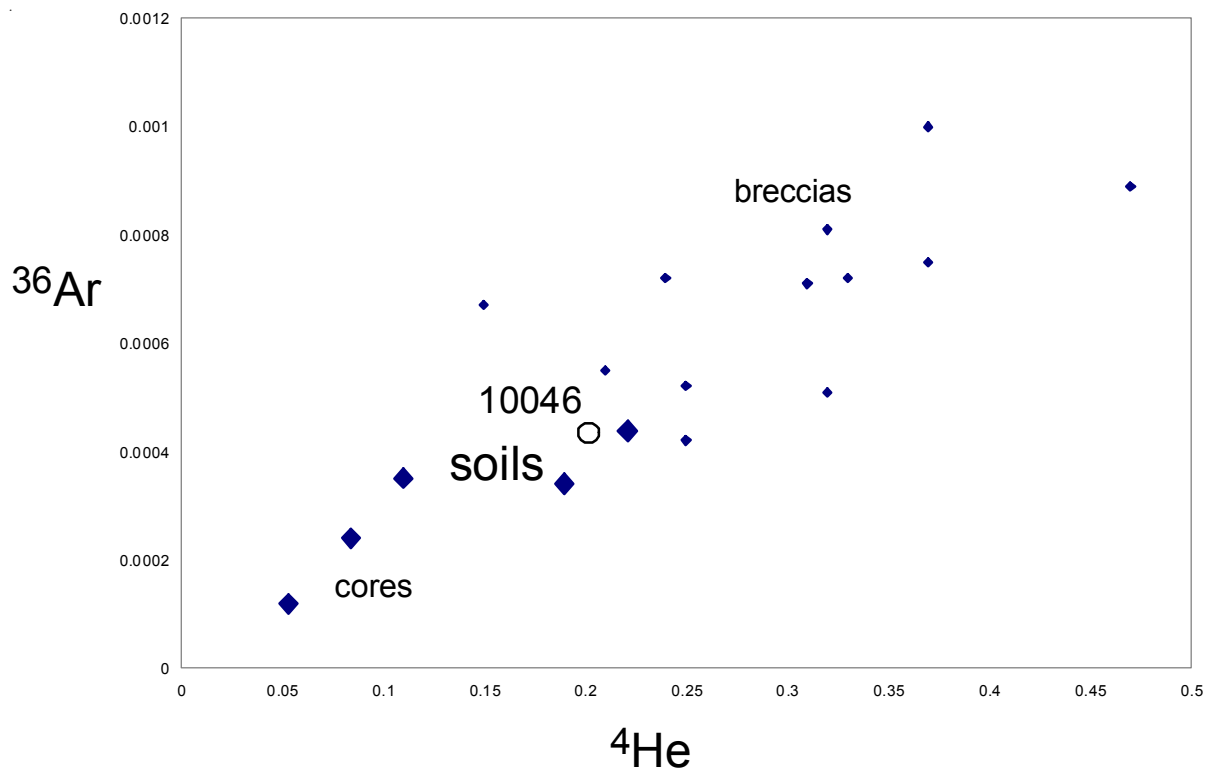
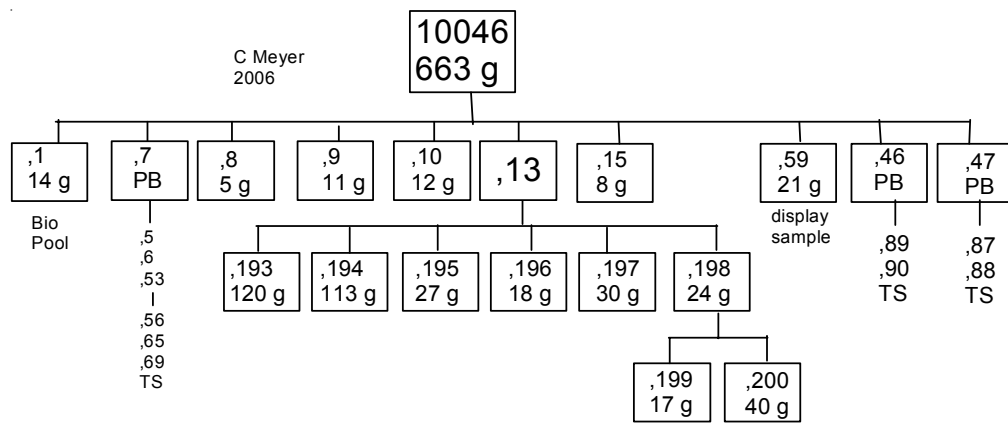


Figure 8: Implanted solar wind rare gas for 10046 compared with other Apollo 11 breccias, soils and cores (data from Funkhouser et al. 1970 and Hintenberger et al. 1976).

References for 10046

Agrell S.O., Scoon J.H., Muir I.D., Long J.V.P., McConnell J.D.C. and Peckett A. (1970) Observations on the chemistry, mineralogy and petrology of some Apollo 11 lunar samples. *Proc. Apollo 11 Lunar Sci. Conf.* 93-128.

Anderson O.L., Scholz C., Soga N., Warren N. and Schreiber E. (1970) Elastic properties of a micro-breccia, igneous rock and lunar fines from the Apollo 11 mission. *Proc. Apollo 11 Lunar Sci. Conf.* 1959-1973.

Bloch M.R., Fechtig H., Genter W., Neukum G. and Schneider E. (1971) Meteorite impact craters, crater simulations, and the meteoroid flux in the early solar system. *Proc. Second Lunar Sci. Conf.* 2639-2652.

Fruland R.M. (1983) Regolith Breccia Workbook. Curatorial Branch Publication # 66. JSC 19045.

Chao E.C.T., James O.B., Minkin J.A., Boreman J.A., Jackson E.D. and Raleigh C.B. (1970) Petrology of

- unshocked crystalline rocks and evidence of impact metamorphism in Apollo 11 returned lunar samples. *Proc. Apollo 11 Lunar Sci. Conf.* 287-314.
- Chung D.H., Westphal W.B. and Simmons G. (1971) Dielectric behavior of lunar samples: Electromagnetic probing of the lunar interior. *Proc. 2nd Lunar Sci. Conf.* 2381-2390.
- Dence M.R., Douglas J.A.V., Plant A.G. and Traill R.J. (1970) Petrology, mineralogy and deformation of Apollo 11 samples. *Proc. Apollo 11 Lunar Science Conf.* 315-340.
- Delano J.W. and Livi K. (1981) Lunar volcanic glasses and their constraints on mare petrogenesis. *Geochim. Cosmochim. Acta* **45**, 2137-2149.
- Delano J.W., Lindsley D.H. and Rudowski R. (1981) Glasses of impact origin from Apollo 11, 12, 15 and 16: Evidence for fractional vaporization and mare/highland mixing. *Proc. 12th Lunar Planet. Sci. Conf.* 339-370.
- Eberhardt P., Geiss J., Graf H., Grogler N., Mendina M.D., Morgeli M., Schwaller H., Stettler A., Krahenbuhl U. and von Gunten H.R. (1972) Trapped solar wind noble gases in Apollo 12 lunar fines 12001 and Apollo 11 breccia 10046. *Proc. 3rd Lunar Sci. Conf.* 1821-1856.
- von Engelhardt W., Arndt J., Muller W.F. and Stoffler D. (1970) Shock metamorphism of lunar rocks and origin of the regolith at the Apollo 11 landing site. *Proc. Apollo 11 Lunar Sci. Conf.* 363-384.
- von Engelhardt W., Arndt J., Muller W.F. and Stoffler D. (1971) Shock metamorphism and origin of regolith and breccias at the Apollo 11 and Apollo 12 landing sites. *Proc. Second Lunar Sci. Conf.* 833-854.
- Essene E.J., Ringwood A.E. and Ware N.G. (1970) Petrology of the lunar rocks from Apollo 11 landing site. *Proc. Apollo 11 Lunar Sci. Conf.* 385-397.
- Friedman I., Gleason J.D. and Hardcastle K.G. (1970) Water, hydrogen, deuterium, carbon and C13 content of selected lunar material. *Proc. Apollo 11 Lunar Sci. Conf.* 1103-1109.
- Funkhauser J.G., Schaeffer O.A., Bogard D.D. and Zahringer J. (1970) Gas analysis of the lunar surface. *Proc. Apollo 11 Lunar Sci. Conf.* 1111-1116.
- Funkhauser J.G., Jessberger E., Muller O. and Zahringer J. (1971) Active and inert gases in Apollo 12 and 11 samples released by crushing at room temperature and heating at low temperature. *Proc. 2nd Lunar Sci. Conf.* 1381-1396.
- Hintenberger H., Weber H.W. and Takaoka N. (1971) Concentrations and isotopic abundances of the rare gases in lunar matter. *Proc. 2nd Lunar Sci. Conf.* 1607-1625.
- Hintenberger H., Schultz L. and Weber H.W. (1975a) A comparison of noble gases in lunar fines and soil breccias: Implications for the origin of soil breccias. *Proc. 6th Lunar Sci. Conf.* 2261-2270.
- Hintenberger H., Schultz L. and Weber H.W. (1975b) Differences of the rare gas abundance pattern between lunar soils and breccias (abs). *Lunar Sci.* **VI**, 367-369. Lunar Planetary Institute, Houston.
- Hintenberger H., Schultz L. and Weber H.W. (1975c) Rare gases in ilmenite and bulk samples of Apollo 17 soils and breccias (abs). *Lunar Sci.* **VI**, 370-372. Lunar Planetary Institute, Houston.
- Keil K., Bunch T.E. and Prinz M. (1970) Mineralogy and composition of Apollo 11 lunar samples. *Proc. Apollo 11 Lunar Sci. Conf.* 561-598.
- Kharkar D.P. and Turekian K.K. (1971) Analyses of Apollo 11 and Apollo 12 rocks and soils by neutron activation. *Proc. 2nd Lunar Sci. Conf.* 1301-1305.
- King E.A., Carman M.F. and Butler J.C. (1970) Mineralogy and petrology of coarse particulate material from the lunar surface at Tranquillity base. *Proc. Apollo 11 Lunar Sci. Conf.* 599-606.
- Kramer F.E., Twedell D.B. and Walton W.J.A. (1977) **Apollo 11 Lunar Sample Information Catalogue** (revised). Curator's Office, JSC 12522
- Lovering J.F. and Ware N.G. (1970a) Electron probe microanalyses of minerals and glasses in Apollo 11 lunar samples. *Proc. Apollo 11 Lunar Sample Conf.* 633-654.
- Lovering J.F. and Hughes T.C. (1971) Re and Os determinations and meteoritic contamination levels in Apollo 11 and Apollo 12 lunar samples. *Proc. Second Lunar Sci. Conf.* 1331-1335.

LSPET (1969) Preliminary examination of lunar samples from Apollo 11. *Science* **165**, 1211-1227.

Morrison G.H., Gerard J.T., Kashuba A.T., Gangadharam E.V., Rothenberg A.M., Potter N.M. and Miller G.B. (1970) Elemental abundances of lunar soil and rocks. *Proc. Apollo 11 Lunar Sci. Conf.* 1383-1392.

Müller O. (1972) Chemically bound nitrogen abundances in lunar samples, and active gases released by heating at lower temperatures. *Proc. 3rd Lunar Sci. Conf.* 2059-2068.

Philpotts J.A. and Schnetzler C.C. (1970a) Potassium, rubidium, strontium, barium and rare-earth concentrations in lunar rocks and separated phases. *Science* **167**, 493-495.

Philpotts J.A. and Schnetzler C.C. (1970b) Apollo 11 lunar samples: K, Rb, Sr, Ba and rare-earth concentrations in some rocks and separated phases. *Proc. Apollo 11 Lunar Science Conf.* 1471-1486.

Phinney W.C., McKay D.S., Simonds C.H. and Warner J.L. (1976a) Lithification of vitric- and clastic-matrix breccias: SEM photography. *Proc. 7th Lunar Sci. Conf.* 2469-2492.

Ponnamperuma C. (1972) Lunar organic analysis: Implications for chemical evolution. *Space Life Sci.* **3**, 493-496.

Schmitt H.H., Lofgren G., Swann G.A. and Simmons G. (1970) The Apollo 11 samples: Introduction. *Proc. Apollo 11 Lunar Science Conf.* 1-54.

Shearer C.K. and Papike J.J. (1993) Basaltic magmatism on the Moon: A perspective from volcanic picritic glass beads. *Geochim. Cosmochim. Acta* **57**, 4785-4812.

Sutton R.L. and Schaber G.G. (1971) Lunar locations and orientations of rock samples from Apollo missions 11 and 12. *Proc. 2nd Lunar Sci. Conf.* 17-26.

Wasson J.T. and Baedeker P.A. (1970) Ga, Ge, In, Ir, and Au in lunar terrestrial and meteoritic basalts. *Proc. Apollo 11 Lunar Sci. Conf.* 1741-1750.