

12013
Breccia with granite
82.3 grams



Figure 1: Close-up photo of 12013,11. Field of view is 4.5 cm. NASA# S70-43636

Introduction

12013 is a unique lunar sample, but it did not appear to be remarkable to the astronauts when they picked it up (figure 1). It was not documented by surface photography, nor is its location or orientation known (although there is a large zap pit (~2 mm) on the end piece that was cut off (.8 W₁). However, during preliminary examination, 12013 was found to have K = 2.02 wt. %, U = 10.7 ppm, Th = 34.3 ppm (LSPET 1970, O'Kelley et al. 1971) which was a good deal higher than that of other lunar samples.

According to Quick et al. (1981), lunar sample 12013 is best interpreted as a complex mixture of two polymict breccias (seen in figures 2 and 3). One is black and aphanitic and the other is mottled gray and white. There is sometimes a distinct boundary between these two general lithologies (figure 4). The black breccia is generally basaltic in composition, while the gray and

white lithology is generally silica and potassium rich. Large vugs can be seen in the bulk rock (figure 1), and numerous small vesicles are seen in thin sections of the black lithology. Both lithologies are greatly enriched in trace elements.

The groundmass of the black breccia is a fine-grained intergrowth of plagioclase, pyroxene, ilmenite and phosphate minerals. The clast population is dominated by fragments of plagioclase, quartzofeldspathic rocks and norite. These clasts have not equilibrated with the groundmass. The chemical composition of the black breccia lithology is generally similar to KREEP.

The gray and white portion is generally granitic in composition, but includes as clasts, felsite, basalt and gabbro. The gray breccia lithology included felsite, quartzofeldspathic rock as large clasts that partially

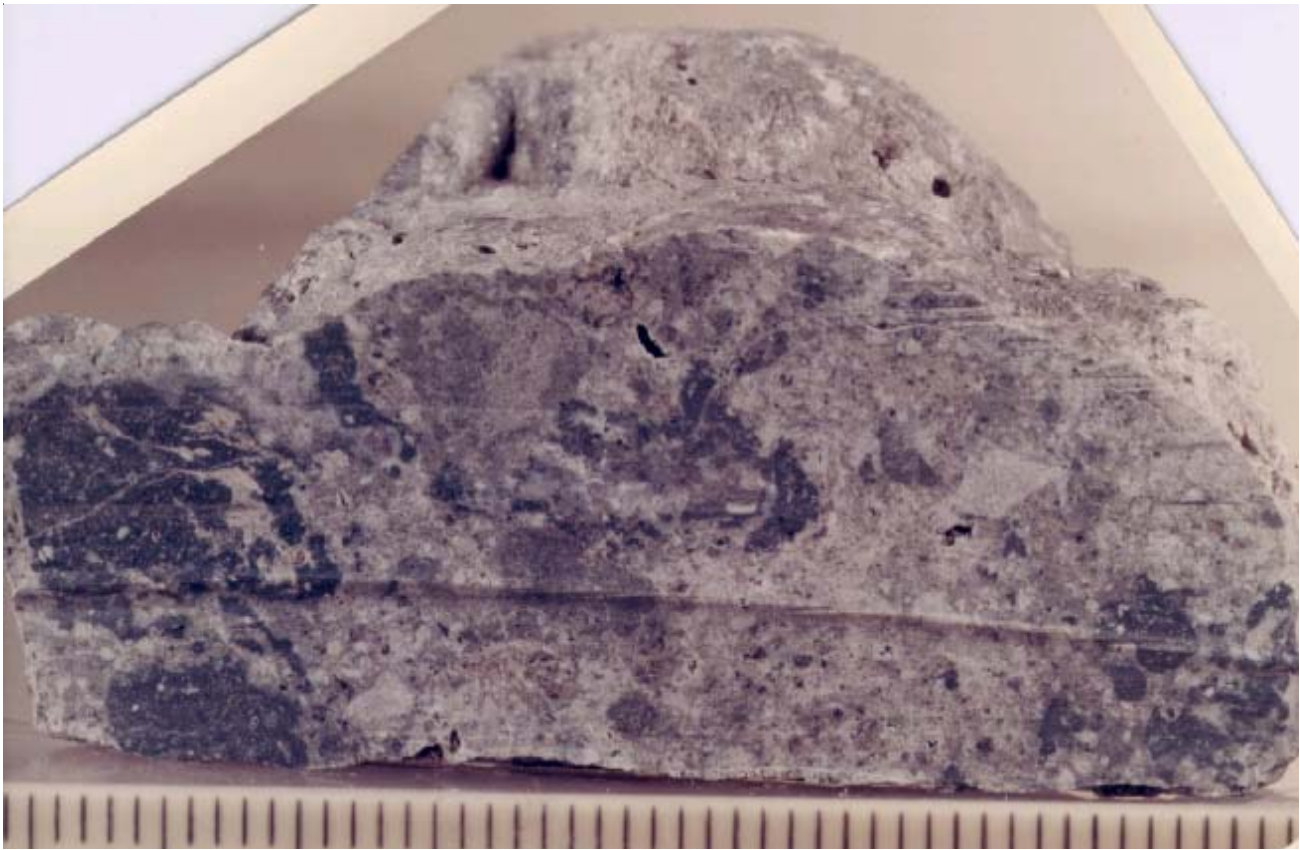


Figure 2: Photo of sawn surface of 12013,11 showing “marbled” nature of light and dark breccia lithologies. Scale is in mm. NASA# S70-43171.

melted and recrystallized. Granitic melt locally migrated to fill interstices and is now a fine-grained intergrowth of K-feldspar and silica. Based on the very high K, U, Th in the bulk sample and light color (figure 1), the gray and white breccia lithology may be the dominant component of the remainder of 12013.

The source terrain for 12013 was unusual for the moon: consisting of various norites, basalts, gabbros, quartzofeldspathic and granitic rocks. However, material from mare basalt appears to be absent.

Petrography

Albee et al. (1970), Drake et al. (1970) and Gay et al. (1970) initially studied a small portion of 12013 (figure 3). James (1970) studied 12013,6 which contains a large clast of felsite or granite (figure 4). McGee et al. (1979) and Quick et al. (1981a) provided further detailed description. Everyone concluded that 12013 is a complicated rock. *The good news (?) is that there remains more than 60 grams of pristine sample yet unstudied!*

Mineralogical Mode 12013 (from Quick et al. 1981)

	Black bx. mineral fragments	Gray bx. mineral fragments	felsite clasts	quartzo- feldspathic clasts
Plagioclase	51.8	65	2	35
K-feldspar		0.7	50	27
Pyroxene	17.2	15.6	5	3
Olivine	29.6	4.4		
Ilmenite	1.4	2.7	1	10
Silica		8.5	40	22
Zircon		0.4	tr.	tr.
Phosphate		1.3		

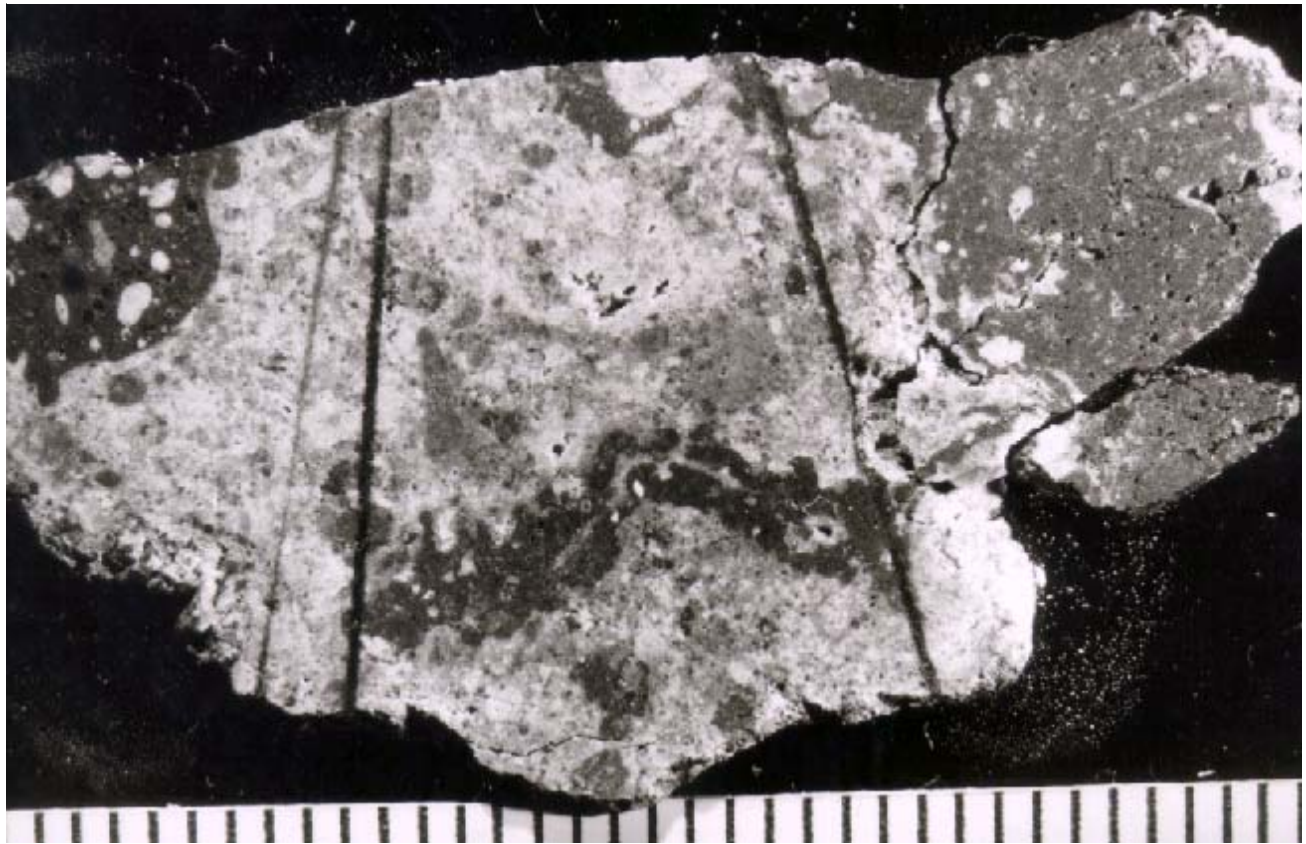


Figure 3: Photo of 12013 slab ,9. Scale in mm. NASA# S70-40833 This thin slab was used to make thin sections ,13 ,14 ,15.

Both the black and gray breccia lithologies exhibit reaction of clasts with the matrix and exhibit plastic flow indicating breccia formation at a high temperature. The mineral and lithic clast populations in these two lithologies are similar, but the percentages differ.

A felsite lithology within the gray lithology is characterized by intergrowths of quartz, K-feldspar, ilmenite and include long narrow (delicate) needles of high-Ca pyroxene that indicate crystallization from a melt (James 1970). This lithology lacks evidence of plastic flow since crystallization. Ovoids filled with felsite are also found in the black breccia lithology.

Numerous very small lithic clasts in both lithologies of 12013 were carefully studied and reported by Drake et al. (1970) and Quick et al. (1981a).

Petrogenesis

The black breccia lithology is a fragment-laden melt rock probably formed by mixing cold, impact-produced, mineral and lithic fragments with superheated, impact-generated melt during a major

impact (Simonds et al. 1976, Quick et al. 1981a). The clastic component of the gray lithology was fragmented and weakly shocked by impact. The apparent clast populations of both lithologies are approximately the same, although with different percentages. Only one impact is required; both lithologies may have formed simultaneously.

The question of whether silicate liquid immiscibility played a part in the origin of 12013 has been discussed by Rutherford and Hess (1978) and Quick et al. (1981a). There appears to be considerable confusion.

Mineralogy

Olivine: The black breccia component has olivine Fe_{46-82} . The gray breccia component has olivine Fe_{48-62} .

Pyroxene: Pyroxene compositions are generally Fe-rich (figure 6). Some of the pyroxenes in the black breccia lithology are chemically zoned. Long delicate needles of Ca-rich pyroxene are found in the felsite portion. Various pyroxenes are found in lithic fragments.

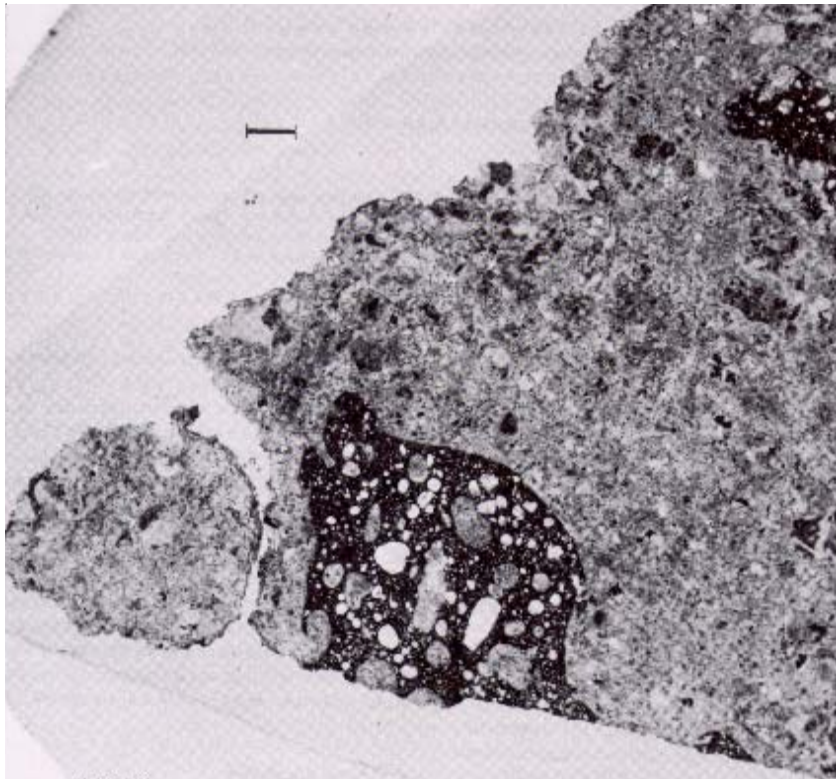


Figure 4: Photomicrograph of thin section 12013,13 showing sharp boundary between light and dark lithologies. Scale bar is 1 mm.



Figure 5: Photomicrograph of thin section 12013,6 showing "felsite" clast. Field of view is 11 mm. NASA # S70-25410.

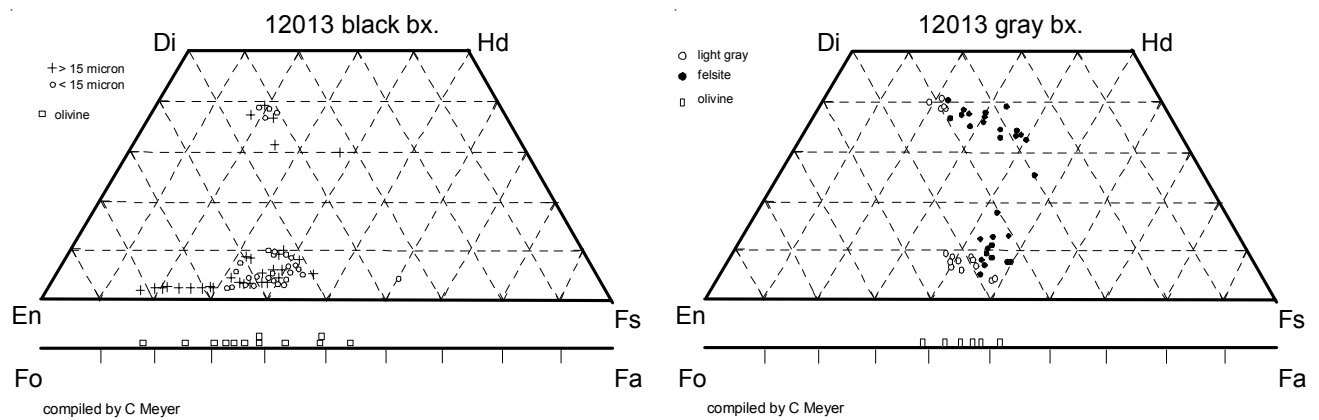


Figure 6: Pyroxene compositions in dark and light lithologies of 12013. The data for the dark lithology are from Drake et al. (1970) figures 5 b and c, and light from figures 5 d and g (including felsite lithology). Pyroxenes from various lithic clasts generally omitted (see Drake et al. 1970, Albee et al. 1970, Quick et al. 1977). Olivine from Quick et al. (1981a).

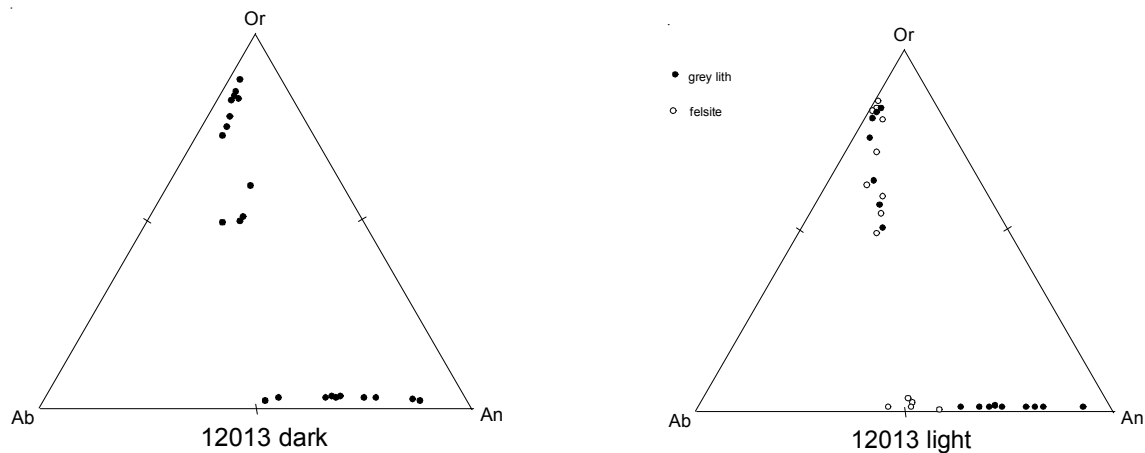


Figure 7: Composition of feldspar clasts in light and dark breccia lithologies of 12013,6 replotted from James (1970).

Plagioclase: Plagioclase found in lithic clasts and as mineral fragments in the matrix of both breccia lithologies range widely from $>An_{90}$ to An_{50} (figure 7). Plagioclase in the felsite lithology is An_{50} .

K-feldspar: Potassium feldspar is Ba-rich (1 – 2 wt. %). Some analyses indicate ternary feldspar (figure 7).

Silica: Drake et al. (1970) reported large crystal fragments (1 mm) of tridymite in the dark lithology. Most of the silica intergrown with K-spar in the felsite is now quartz, having reverted from tridymite (Quick 1981a).

Ilmenite: Some of the ilmenite in 12013 contains up to 1 % Nb (Quick et al. 1981a). Ilmenite with Nb = 1.9 % has been reported in the felsite.

Accessory Minerals: Haines et al. (1971) studied U-bearing minerals including: whitlockite, apatite, zircon, phase beta and a Zr-Ti mineral rich in Fe, Nb, Y, REE. Gay et al. (1970) presented some crystallographic data for whitlockite and silica polymorphs.

Zircon: Albee et al. (1970) and Quick et al. (1981a) reported zircons in nearly every area they studied. Haines et al. (1971) and Compston et al. (1984) reported analyses of large zircons (>100 microns).

Chemistry

LSPET (1970) and O'Kelley et al. (1971) determined that the bulk sample 12013 was extremely enriched in K, U and Th.

Table 1a. Chemical composition of 12013,10.

	6	6	6	15	15	15	18	18	18	41	41	41	44	44	44
<i>ref.</i>	Morgan70	Wakita 70	Laul 70	Morgan	Wakita	Laul	Morgan	Wakita	Laul	Morgan	Wakita	Laul	Morgan	Wakita	Laul
<i>weight</i>	88 mg	86.5 mg	85 mg	99	98.3		66	66.1		32	31.7		42	42.2	
SiO2 %	53.7			63.3			64			70.6			56.7		
TiO2		3.17			0.83			0.83			0.83				0.67
Al2O3	13.4	14.7		12.5	12.6		11.9	11.9		9.6	11.4		11.9	13.2	
FeO	14.1	11.2		11.5	9.1		12.8	9.6		14.1	9.6		11.5	11.2	
MnO		0.16			0.14			0.14			0.12				
MgO															
CaO		8.95			6.8			6.4			3.9			8.5	
Na2O		1.36			1.27			1.36			1.26			1.21	
K2O		0.58			2.2			2.1			3.6			0.73	
P2O5															
S %															
<i>sum</i>															
Sc ppm		25			24			22			20			30	
V		50			70			100			70			90	
Cr		1150			1130			1160			980			1660	
Co		35	31		18	16		20	21		28	34		23	21
Ni															
Cu															
Zn			4.1			2.06			1.94			2.21			2.44
Ga			6.4			6.3			5.9			5.9			6
Ge ppb															
As															
Se															
Rb			13.5			66.5			49.4			98.7			20.7
Sr															
Y															
Zr															
Nb															
Mo															
Ru															
Rh															
Pd ppb															
Ag ppb			31.4			0.88			0.68			0.44			1.17
Cd ppb			34			91			44			300			24
In ppb			380			32			2.9			6.6			3.1
Sn ppb															
Sb ppb															
Te ppb															
Cs ppm			0.82			2.67			2.28			4.03			1.01
Ba		1330			2790			2750			3900			1490	
La		120			53			60			59			55	
Ce															
Pr															
Nd															
Sm		51			18.8			21.9			19.3			21.8	
Eu		3.4			1.9			0.9			1.8			2.4	
Gd															
Tb															
Dy															
Ho															
Er															
Tm															
Yb		39			30			30			37			24	
Lu		5.1			4			4.1			5.5			3.2	
Hf		36			19			21			24			20	
Ta															
W ppb															
Re ppb															
Os ppb															
Ir ppb			4.6			0.05			0.72			10			0.84
Pt ppb															
Au ppb			3.1			0.21			0.46			0.45			0.34
Th ppm		19			25			26			37			14	
U ppm		6			9.2			8.8			12.4			6.1	

technique (a) RNAA, INAA

Table 1b. Chemical composition of 12013,10.

ref.	37+24 Morgan70	37+24 Wakita 70 49.4 mg	37+24 Laul 70	35 Morgan	35 Wakita 56.7	35 Laul	AVE Anders 71	LSPET Anderson 70	18	gray Hubbard 70	white	black	
weight									28.75	25.33	13.14	41.45	
SiO2 %	60.76			53.27			(a) 61	(b)					
TiO2		1.33			1.5		(a) 1.2	(b)					
Al2O3	13.04	11.3		12.3	12.6		(a) 11.9	(b)					
FeO	16.7	12.1		20.6	13		(a) 10	(b)					
MnO		0.16			0.2		(a) 0.12	(b)					
MgO							6	(b) 4.6	8.3	0.85	9.1	(c)	
CaO							6.3	(b) 3.85	7.65	4.26	10.6	(c)	
Na2O							0.69	(b) 0.75	1.08	1.93	1.29	(c)	
K2O							2	(b) 1.17	0.68	5.08	1.16	(d)	
P2O5													
S %													
sum													
Sc ppm		28			38		(a) 21	(b)					
V		80			100		(a) 13	(b)					
Cr		1770			2300		(a) 1050	(b)					
Co		35	34		25	27	26	(a) 13	(b)				
Ni								105	(b)				
Cu													
Zn			2.85			3.04	2.77	(a)					
Ga			6			6	6.1	(a)					
Ge ppb													
As													
Se			68			75	94	(a)					
Rb			50			26.7	42	(a) 33	(b) 29.4	20.9	128.7	9.8	(d)
Sr								150	(b) 105.5	147.8	235	214.9	(d)
Y								240	(b)				
Zr								2200	(b)				
Nb								170	(b)				
Mo													
Ru													
Rh													
Pd ppb													
Ag ppb			3.49			3.8	1.65	(a)					
Cd ppb			64			40	71	(a)					
In ppb			2.8			3.9	3.7	(a)					
Sn ppb													
Sb ppb													
Te ppb													
Cs ppm			2.37			1.26	1.9	(a)					
Ba		2720			1810			(a) 2150	(b) 1662	1850	7278	1162	(d)
La		50			37			(a)	45.4	37.5	81.4	98	(d)
Ce									116	91.8	199	267	(d)
Pr													
Nd									62.8	47.4	97.2	156	(d)
Sm		17.9			14			(a)	18	13.9	27.8	44.7	(d)
Eu		1.7			1.4			(a)	1.6	2.19	3.96	3.38	(d)
Gd									22.4		32.6		(d)
Tb													
Dy									26.3	22.2	46	55.8	(d)
Ho													
Er									18.2	16.3	34	35.1	(d)
Tm													
Yb		29			19			(a) 20	(b) 20.8	19.9	40.6	34.4	(d)
Lu		4			2.7			(a)	2.91	2.8	5.8	4.66	(d)
Hf		18			20			(a)					
Ta													
W ppb													
Re ppb													
Os ppb													
Ir ppb			0.5			0.19	0.434	(a)					
Pt ppb													
Au ppb			2.37			13.2	0.353	(a)					
Th ppm		25			12			(a)					
U ppm		9.7			4.6			(a)					

technique (a) RNAA, INAA, (b) PET OES, (c) AA, (d) IDMS

Table 1c. Chemical composition of 12013,10.

reference	felsite	KREEP	10	15	8	23	37 + 24	8	15	LSPET 70	
weight	Janssens 78				Charlie	Schnetzler	1970				
SiO ₂ %	5.85	5.99	10	5.2	37	68	33.4	18.4	14.5	61	(c)
TiO ₂										1.2	(c)
Al ₂ O ₃										12	(c)
FeO										10	(c)
MnO										0.12	(c)
MgO										6	(c)
CaO										6.3	(c)
Na ₂ O										0.69	(c)
K ₂ O			0.94	0.69	0.53	1.77	2.06	2	4.59	(b) 2	(c)
P ₂ O ₅											
S %											
sum											
Sc ppm										21	(c)
V										13	(c)
Cr										1050	(c)
Co										13	(c)
Ni	<50	260	(a)							105	(c)
Cu											
Zn	2.5	3.9	(a)								
Ga											
Ge ppb	30.5	409	(a)								
As											
Se	0.4	0.93	(a)								
Rb	55.5	4.94	(a)	25.8	18.7	14.3	47.4	56.7	57.2	127	(b) 33 (c)
Sr				200	157		120	131		126	(b) 150 (c)
Y											240 (c)
Zr											2200 (c)
Nb											170 (c)
Mo											
Ru											
Rh											
Pd ppb	<4	13	(a)								
Ag ppb	1.76	1.2	(a)								
Cd ppb	48	37	(a)								
In ppb	28	3.6	(a)								
Sn ppb											
Sb ppb	0.25	1.14	(a)								
Te ppb	<13	15	(a)								
Cs ppm	2.7	0.71	(a)								
Ba				1610	895	956	2560	2770	3450	5790	(b)
La											
Ce				341	374	283	92.7	115	169	136	(b)
Pr											
Nd				205	224	176	48	56.8	92.7	62.5	(b)
Sm				56.2	61.9	46.6	13.8	16.5	26.4	18	(b)
Eu				3.52	2.76	3.21	2.24	2.22	2.81	2.1	(b)
Gd				65.7	73.2	58.7	16.8	20.4	32	21.7	(b)
Tb											
Dy				72.7	80.6	63.1	25.3	29.4	43	33.6	(b)
Ho											
Er				43.9	48.1	37.5	18.5	22.6	29	27.4	(b)
Tm											
Yb				41	47.1	36.2	23	27.4	32	34.4	(b) 20 (c)
Lu				6.36	6.95	5.4	3.67	4.3	5.18	5.64	(b)
Hf											
Ta											
W ppb											
Re ppb	0.028	0.26	(a)								
Os ppb	0.09	5.84	(a)								
Ir ppb	0.17	7.64	(a)								
Pt ppb											
Au ppb	0.081	3.97	(a)								
Th ppm											
U ppm	11.15	5.71	(a)								

technique (a) RNAA, (b) IDMS, (c) optical emission spec.

Table 2. Chemical composition of 12013.

reference weight	black bx.	black	gray	gray	gray	black bx. felsite		felsite	KREEP		
	Quick 77						Quick 77			Warren 1988	
SiO2 %	1.52 mg	2.04 mg	6.16 mg	1.21 mg	0.98 mg	5.25 mg	50.1	73.1	73	(b)	50.3
TiO2	1.9	4.6	3.3	0.75	0.86	0.3	(a) 2.2		0.6	(b)	2
Al2O3	12.5	11.9	14.6	11.1	9.8	10.1	(a) 13.2	12.1	11.9	(b)	15.1
FeO	14.2	13.3	13.7	9.6	6	14	(a) 12.3	1.3	1.4	(b)	10.3
MnO	0.158	0.164	0.166	0.122	0.077	0.15	(a) 0.15			(b)	
MgO	10.7	8.6	9	6.3	5.5	8.5	(a) 7.4	0.5	0.7	(b)	8.3
CaO	7.3	8.9	9.7	4.1	3.8	4.6	(a) 9.5	1.5	1.4	(b)	13.9
Na2O	1.45	1.47	1.45	1.28	1.17	1.12	(a) 1.9	1.4	1.4	(b)	0.94
K2O	0.37	0.5	0.4	3.74	3.03	2.6	(a) 0.06	6.7	6.8	(b)	0.96
P2O5							1.2	0.2	0.13	(b)	0.8
S %											
sum											
Sc ppm	23	30	28	21	17	25	(a)				23
V	33	46	34	47	42	61	(a)				40
Cr	889	985	1108	1034	493	472	(a)				1200
Co	29	24	27	12	8.6	24	(a)				25
Ni											
Cu											20
Zn											5
Ga											9
Ge ppb											500
As											
Se											
Rb	16	33	10	124	101	87	(a)				22
Sr											200
Y											400
Zr	940	1140	2070	1130	720	690	(a)				1400
Nb											100
Mo											
Ru											
Rh											
Pd ppb											
Ag ppb											
Cd ppb											
In ppb											
Sn ppb											
Sb ppb											
Te ppb											
Cs ppm	1.8	2.1	1.7	4	4.3	3.1	(a)				1
Ba	660	1430	390	4150	4160	3760	(a)				1300
La	135	130	135.7	64	39	56.5	(a)				110
Ce	333	344	347	170	100	151	(a)				280
Pr											37
Nd	242	219	215	91	59	74	(a)				178
Sm	53	53	59	20	13	19	(a)				48
Eu	2.52	3.29	3.89	1.85	1.74	2.14	(a)				3.3
Gd											58
Tb	10.6	11.4	12.5	4.9	3.7	5.2	(a)				10
Dy	67	70	75	38	23	33	(a)				65
Ho											14
Er											40
Tm											5.7
Yb	36	37	39	35	25	30	(a)				36
Lu	4.8	4.5	5.2	5.2	3	4.2	(a)				5
Hf	32	38	63	23	25	27	(a)				38
Ta	3.9	9.1	5.3	6.6	5	7.1	(a)				5
W ppb											3
Re ppb											
Os ppb											
Ir ppb											
Pt ppb											
Au ppb											
Th ppm	17.2	17	24.5	44.8	35.6	47	(a)				22
U ppm	5.3	6.2	10.4	12.1	10.4	14.2	(a)				6.1

technique (a) INAA, (b) DBA elec. Probe

Table 3: Additional composition data for 12013

	sample #	U ppm	Th ppm	K ppm	Rb ppm	Sr ppm	weight
O'Kelley et al. 1971		10.3	34.2	20400			80 g
		9.8	32.2	21100			66 g
Hubbard et al. 1970	,18			9750	29.4	105.5	28 mg
	gray			5670	20.9	147.8	25 mg
	white			42200	128.7	235	13 mg
	black			3830	9.8	215	
Bottino et al. 1971	10 dark				25.8	200	
Schnetzler et al. 1970	10 dark				18.7	157	
	8 felds				38.4	329	
	23 lih, dark				47.4	120	
	37 + 24				56.7	131	
	8 light				57.2	161	
	15 light				127	126	
	15 A < 2.62				197	151	
	15 B				112	159	
	15 D				15.4	50.3	
Rosholt and Tatsumoto 1971	10,9	5.67	20.73				
Tatsumoto 1970	10,42	10.8	34.29				
	10,45	5.75	19.05				
Albee et al. 1970	A				46.1	120	
	B				49.7	88	
	40				49.6	114	
	29				32.5	157	
	45				76.9	102	
	42				104.6	107	
	Comp A				81.7	264	
	35				24.4	198	
	9				8	317	

Morgan and Ehmann (1970), Wakita and Schmitt (1970) and Laul et al. (1970) analyzed the same seven (7) splits of 12013 (table 1). Hubbard et al. (1970), Schnetzler et al. (1970), Ma et al. (1977) and Quick et al. (1977) also analyzed numerous splits (figure 8). The dark portions have the chemical composition of KREEP (figure 9), while the light portions have granitic composition (with high K, Ba and Rb) that is distinguished by a bowed-down REE pattern (red in figure 8).

The granitic portion seems to be relatively low in meteoritic siderophiles (Ir, Au, Re) (Laul et al. 1970, Anders et al. 1971, Janssens et al. 1978).

Although the petrography study of the thin slabs (,9 ,10) described 12013 as being made of two lithologies (black and gray), the high K, U, Th of the bulk sample (O'Kelley) indicates that the gray lithology is the main component.

Radiogenic age dating

The age of breccia formation of 12013 seems to be about 4 b.y., but the high initial $^{87}\text{Sr}/^{86}\text{Sr}$ ratio and very radiogenic Pb indicate that the granitic component of

the rock was formed earlier (Nyquist 1977, Wasserburg et al. 1977). Quick et al. (1981b) provide a summary and reinterpretation of the age dating attempted on 12013. They conclude that the granitic component is at least as old as 4.17 b.y and could possibly be as old as 4.5 b.y.

Turner (1970, 1971) dated 12013 by $^{39}\text{Ar}/^{40}\text{Ar}$ plateau at 4.03 b.y (figure 10). Albee et al. (1970) and Wasserburg et al. (1977) dated the rock by Rb/Sr at 3.99 b.y. (figure 11) and Bottino et al. (1971) at 4.08 (figure 12). Haines et al. (1971) determined the age of various U-Th-rich minerals by electron probe analysis (average 4 ± 0.1 b.y.). Hinthorne and Andersen (1974) used the ion microprobe to directly date U-rich zirconolite in the granitic component. Andersen and Hinthorne (1972) and Meyer et al. (1990) determined old ages for zircons (see table).

Albee et al. (1970) and Tatsumoto (1970, 1971) reported U-Th-Pb data for numerous splits, but the discussion is beyond comprehension. It is clear that Pb has been partially redistributed during breccia formation making age dating impossible by this technique.

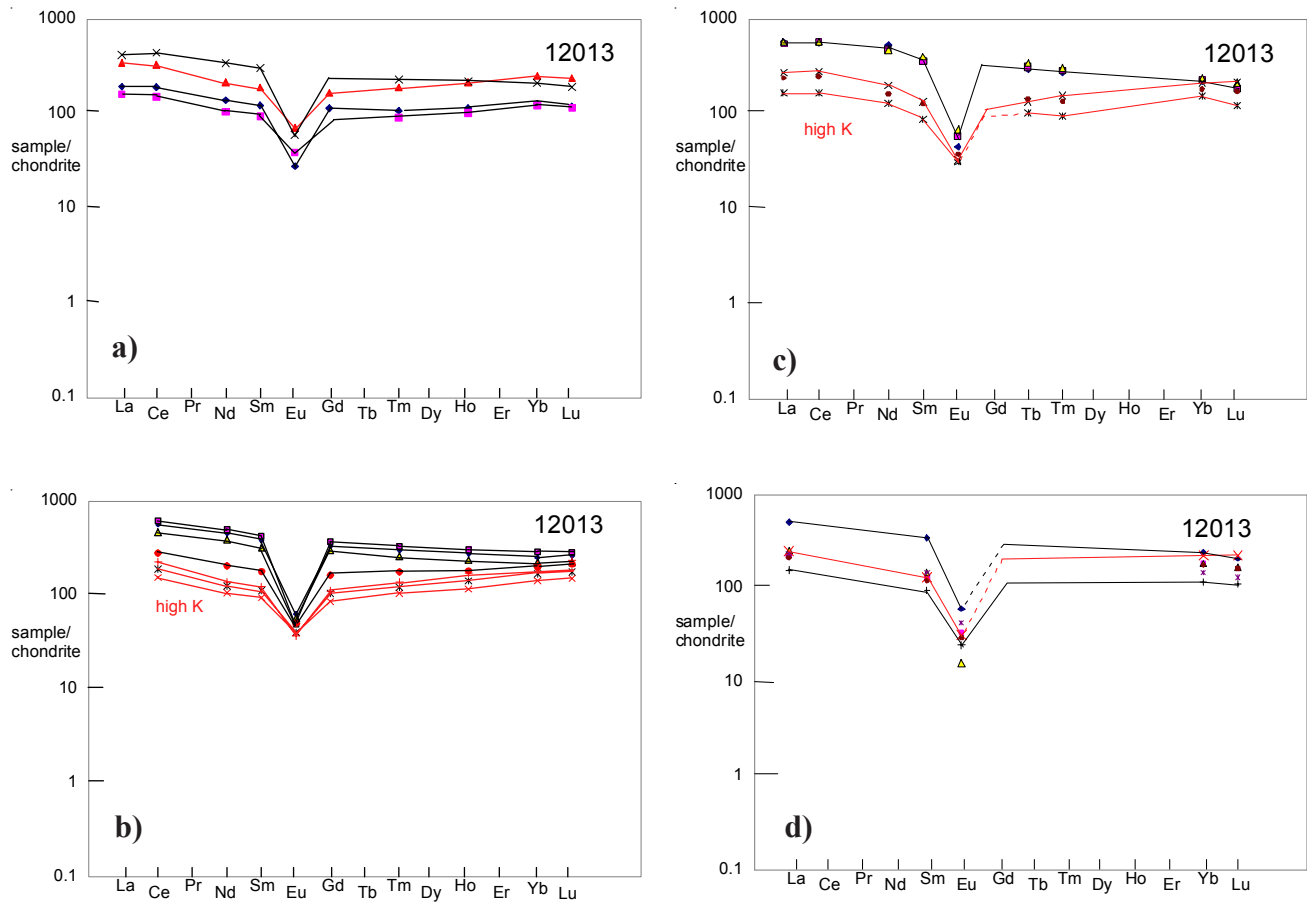


Figure 8: Normalized rare-earth-element patterns for 12013. a) from Hubbard et al 1970, b) from Schnetzler et al. 1970, c) from Quick et al. 1977, d) from Wakita et al. 1970. Red is for samples with high K, Rb, Ba.

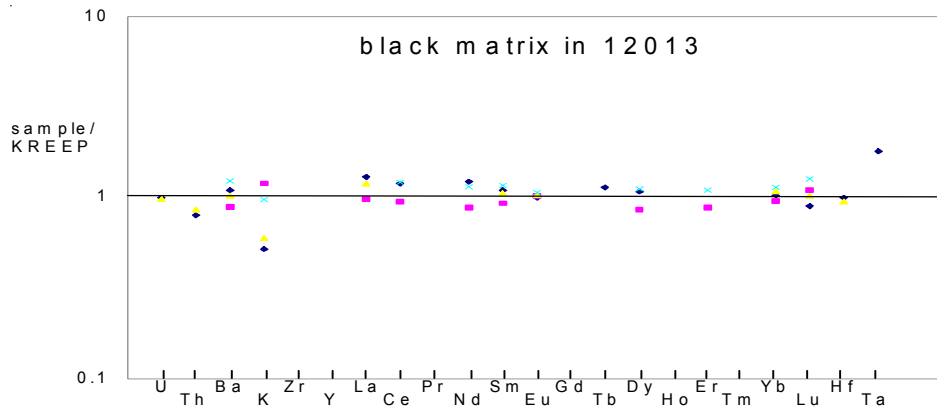


Figure 9: Chemical composition of black lithology of 12013 normalized by KREEP composition as estimated by Warren and Wasson 1980. Data selected from tables 1 and 2.

Alexander (1970), Schaeffer et al. (1970), Turner (1971) and Kaiser (1971) discuss the significant outgassing of ^{40}Ar and ^4He .

Cosmogenic isotopes and exposure ages

Alexander (1970) determined the cosmic ray exposure age as 60 ± 12 m.y. using ^3He and ^{21}Ne . Kaiser (1971) also determined exposure ages for 12013 by various techniques.

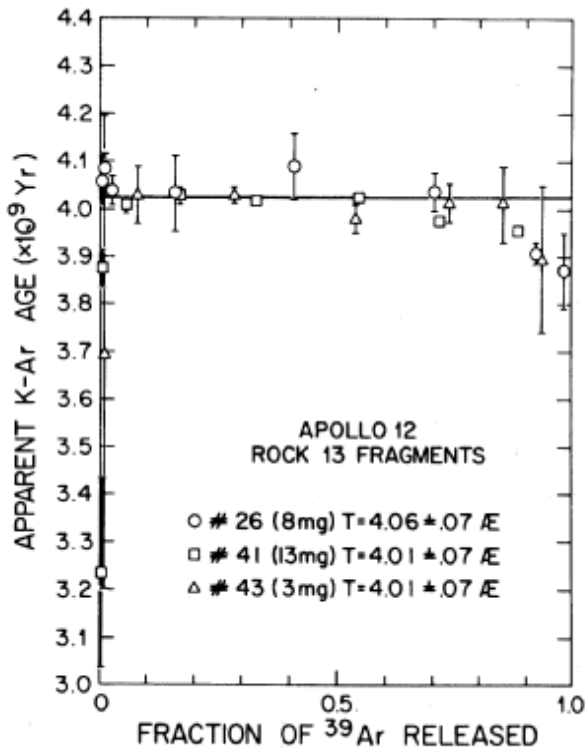


Figure 10: Ar release diagram for 12013 from Turner (1971).

Other Studies

Burnett et al. (1970 and 1971) studied fossil tracks in 12013. Taylor and Epstein (1970) determined the isotopic composition of silicon and oxygen. Rare gas studies were reported by LSPET (1970), Albee et al. (1970), Alexander (1970), Schaeffer et al. (1970) and Kaiser (1971). There was no evidence for Xe from ^{244}Pu nor ^{129}I . Rosholt and Tatsumoto (1971) studied U and Th isotopic systems.

Processing

12013 was subdivided and carefully studied by a consortium at the California Institute of Technology (Anderson 1970). At first, a chip of 12013 was used to make 3 thin sections (,6 see flow diagram). Then a wire saw (with minimum kurf) was used to saw off one end and make two thin slabs (figure 13-16). One slab (figure 3) was used to make three additional thin sections (,14 ,15). The adjacent slab (,10) was subdivided in a clean lab and distributed to numerous investigators. Another chip (,6) was used for Pb isotope studies. The remainder of the rock remains unstudied since the early 1970s!

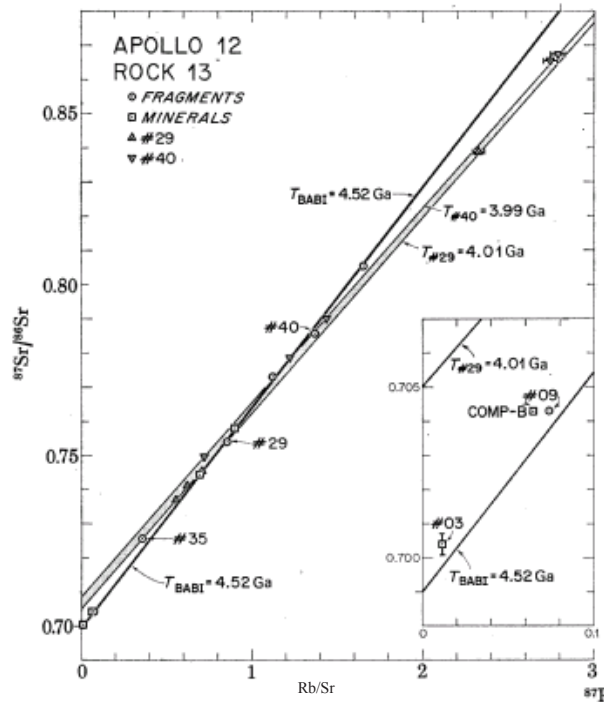


Figure 11: Rb/Sr isochron diagram for 12013 from Albee et al. (1970) and Wasserburg et al. (1977).

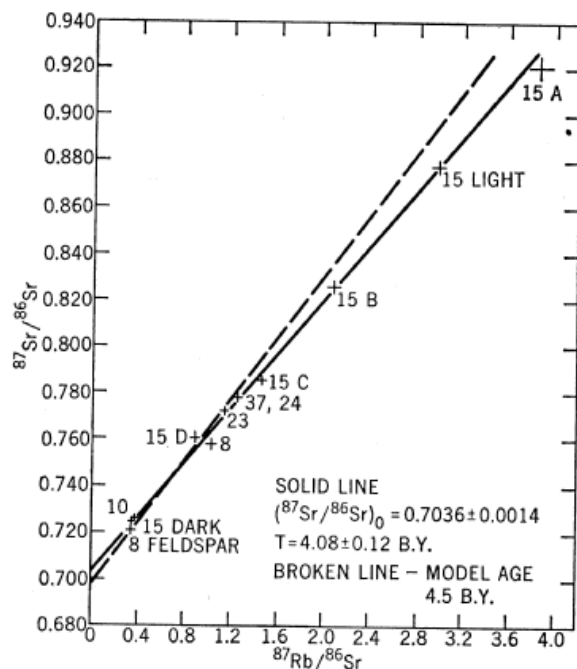
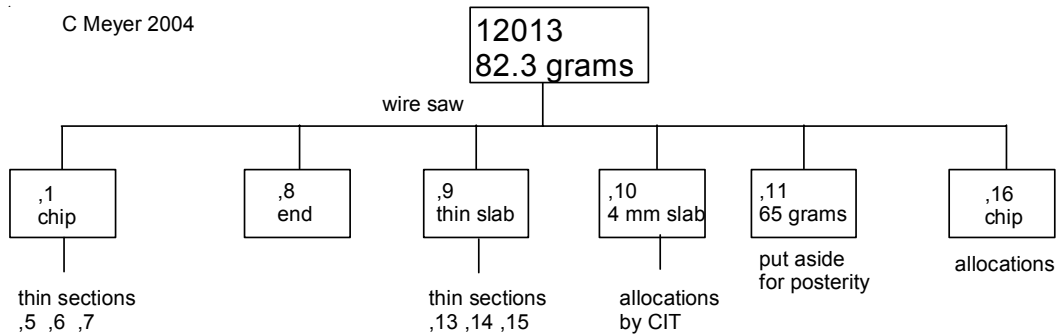


Figure 12: Rb/Sr isochron or mixing diagram for 12013 as determined by Bottino et al. 1971.

Summary of Age Data for 12013

	Ar/Ar	Rb/Sr	Pb/Pb	U-Th-Pb
Turner 1971	4.03 ± 0.07			
Albee et al. 1970		3.99 ± 0.05		
		4.01 ± 0.09		
Bottino et al. 1971		4.08 ± 0.12		
Quick et al. 1981b		~ 4.0 reinterpretation		
Tatsumoto 1970			3.91 ± 0.1 assuming various assumptions	
Tatsumoto 1971			4.37	
Haines et al. 1971				4.00 ± 0.1 electron probe
Andersen and Hinthorne 1972			4.25 zircon	
Hinthorne and Andersen 1974			3.89 zirconolite	
Meyer et al. 1990			4.2-4.3 zircon (unpublished)	

Caution: Decay constants have not been corrected.



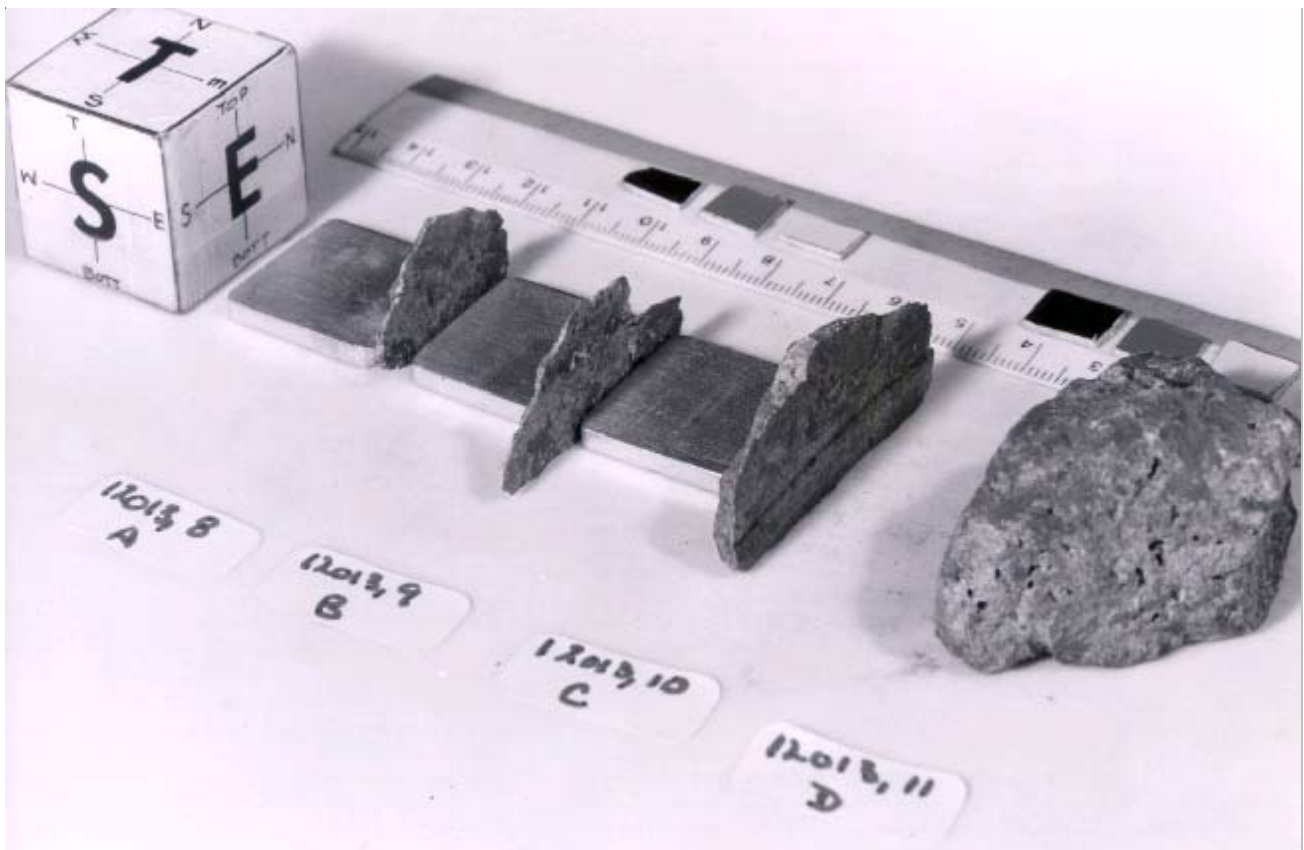


Figure 13: Parts diagram after cutting 12013 in 1970.



Figure 14: Photo after 1st saw cut of 12013. End piece ,8 is laying in the foreground. NASA# S70-40679



Figure 15: Photo after 2nd saw cut of 12013. NASA S70-40673



Figure 16: Photo after 3rd saw cut of 12013. NASA#S70-40682. Compare with figure 2.

References for 12013

- Albee A.L., Burnett D.S., Chodos A.A., Haines E.L., Huneke J.C., Papanastassiou D.A., Podosek F.A., Russ G.P. and Wasserburg G.J. (1970) Mineralogic and isotopic investigations on lunar rock 12013. Alexander E.C. (1970) Rare gases from stepwise heating of lunar rock 12013. *Earth Planet. Sci. Lett.* **9**, 201-207.
- Anderson D.H. (1970) Introduction. The preliminary examination and preparation of lunar sample 12013. *Earth Planet. Sci. Lett.* **9**, 94-102.
- Anders E., Ganapathy R., Keays R.R., Laul J.C., and Morgan J.W. (1971) Volatile and siderophile elements in lunar rocks: Comparison with terrestrial and meteoritic basalts. *Proc. 2nd Lunar Sci. Conf.* 1021-1036.
- Andersen C.A. and Hinthorne J.R. (1972) U, Th, Pb and REE abundances and 207Pb/206Pb ages of individual minerals in returned lunar material by ion microprobe mass analysis. *Earth Planet. Sci. Lett.* **14**, 195-200.
- Bottino M.L., Fullagar P.D., Schnetzler C.C. and Philippotts J.A. (1971) Sr isotopic measurements in Apollo 12 samples. *Proc. 2nd Lunar Sci. Conf.* 1487-1491.
- Burnett D.S., Monnin M., Seitz M., Walker R., Woolum D. and Yuhas D. (1970) Charged particle track studies in lunar rock 12013. *Earth Planet. Sci. Lett.* **9**, 127-136.
- Burnett D.S., Monnin M., Seitz M., Walker R. and Yuhas D. (1971) Lunar astrology – U-Th distributions and fission-track dating of lunar samples. *Proc. 2nd Lunar Sci. Conf.* 1503-1519.
- Compston W., Williams I.S. and Meyer C. (1984b) Age and chemistry of zircons from late stage differentiates (abs). *Lunar Planet. Sci.* **XV**, 182-184. Lunar Planetary Institute, Houston.
- Drake M.J., McCallum I.S., McKay G.A. and Weill D.F. (1970) Mineralogy and petrology of Apollo 12 sample no. 12013: a progress report. *Earth Planet. Sci. Lett.* **9**, 103-123.
- Gay P., Brown M.G. and Rickson K.O. (1970) Mineralogic studies of lunar rock 12013,10. *Earth Planet. Sci. Lett.* **9**, 124-126.
- Haines E.L., Albee A.L., Chodos A.A. and Wasserburg G.J. (1971) Uranium-bearing minerals of lunar rock 12013. *Earth Planet. Sci. Lett.* **12**, 145-154.
- Hinthorne J.R. and Andersen C.A. (1974) Uranium-lead and lead-lead ratios in lunar samples 66095 and 12013 by ion microprobe mass analysis (abs). *Lunar Science V*, 337-339. Lunar Science Institute, Houston.
- Hubbard N.J., Gast P.W. and Wiesmann H. (1970) Rare earth, alkaline and alkali metal and ^{87/86}Sr data for subsamples of lunar sample 12013. *Earth Planet. Sci. Lett.* **9**, 181-184.
- James O.B. (1970) Petrology of lunar microbreccia 12013,6. USGS Interagency Report: Astrogeology 23.
- Janssens M.-J., Palme H., Hertogen J., Anderson A.T., and Anders E. (1978) Meteoritic material in lunar highland samples from the Apollo 11 and 12 sites. *Proc. 9th Lunar Planet. Sci. Conf.* 1537-1550.
- Kaiser W.A. (1971) Rare gas measurements in three mineral separates of rock 12013. *Proc. 2nd Lunar Sci. Conf.* 1627-1641.
- Laul J.C., Keys R.R., Ganapathy R. and Anders E. (1970) Abundance of 14 trace elements in lunar rock 12013,10. *Earth Planet. Sci. Lett.* **9**, 211-215.
- LSPET (1970) Preliminary examination of lunar samples from Apollo 12. *Science* **167**, 1325-1339.
- Lunatic Asylum (1970) Mineralogic and isotopic investigations on lunar rock 12013. *Earth Planet. Sci. Lett.* **9**, 137-163.
- Ma M-S., Murali A.V., Schmitt R.A., Quick J.E. and Albee A.L. (1977) Major minor and trace element compositions of two petrologically significant lithologies in 12013 (abs). *Lunar Sci.* **VIII** 602-604. The Lunny Institute, Houston.
- Morgan J.W. and Ehmann W.D. (1970) Lunar rock 12013: O, Si, Al and Fe abundances. *Earth Planet. Sci. Lett.* **9**, 164-176.
- Nyquist L.E. (1977) Lunar Rb-Sr chronology. *Phys. Chem. Earth* **10**, 103-142.
- O'Keefe, J.A. (1970) Tektite glass in Apollo 12 sample. *Science* **168**, 1209-1210.
- O'Kelley G.D., Eldridge J.S., Schonfeld E. and Bell P.R. (1971a) Abundances of the primordial radionuclides K, Th, and U in Apollo 12 lunar samples by nondestructive gamma-ray spectroscopy: implications for the origin of lunar soils. *Proc. Second Lunar Sci. Conf.* 1159-1168.
- O'Kelley G.D., Eldridge J.S., Schonfeld E. and Bell P.R. (1971b) Cosmogenic radionuclide concentrations and exposure ages of lunar samples from Apollo 12. *Proc. Second Lunar Sci. Conf.* 1747-1755.

Quick J.E., Albee A.L., Ma M.-S., Murali A.V. and Schmitt R.A. (1977) Chemical compositions and possible immiscibility of two silicate melts in 12013. *Proc. 8th Lunar Sci. Conf.* 2153-2189.

Quick J.E., James O.B. and Albee A.L. (1981a) Petrology and petrogenesis of lunar breccias 12013. *Proc. 12th Lunar Planet. Sci. Conf.* 117-172.

Quick J.E., James O.B. and Albee A.L. (1981b) A reexamination of the Rb-Sr isotopic systematic of lunar breccias 12013. *Proc. 12th Lunar Planet. Sci. Conf.* 173-184.

Rosholt and Tatsumoto (1971) Isotopic composition of thorium and uranium in Apollo 12 samples. *Proc. 2nd Lunar Sci. Conf.* 1577-1584.

Rutherford M.J. and Hess P.C. (1978) Immiscible silicate melts in 12013? (abs) *Lunar Planet. Sci.* **IX**, 987-989. The Lunar Sci. Institute, Houston.

Schnetzler C.C., Philpotts J.A. and Bottino M.L. (1970) Li, K, Rb, Sr, Ba and rare-earth concentrations and Rb-Sr age of lunar rock 12013. *Earth Planet. Sci. Lett.* **9**, 185-192.

Tatsumoto M. (1970) U-Th-Pb age of Apollo 12 rock 12013. *Earth Planet. Sci. Lett.* **9**, 193-200.

Tatsumoto M., Knight R.J. and Doe B.R. (1971) U-Th-Pb systematic of Apollo lunar samples. *Proc. 2nd Lunar Sci. Conf.* 1521-1546.

Turner G. (1970b) ⁴⁰Ar-³⁹Ar age determination of lunar rock 12013. *Earth Planet. Sci. Lett.* **9**, 177-180.

Taylor H.P. and Epstein S. (1970b) Oxygen and silicon isotopic ratios of lunar rock 12013. *Earth Planet. Sci. Lett.* **9**, 208-210.

Wakita H. and Schmitt R.A. (1970) Elemental abundances in seven fragments from lunar rock 12013. *Earth Planet. Sci. Lett.* **9**, 177-180.

Wasserburg G.J., Papanastassiou D.A., Tera F. and Huneke J.C. (1977) The accumulation and bulk composition of the moon: Outline of a lunar chronology. *Phil. Trans. Roy. Soc. Lond.* **A285**, 7-22.

Wolf R., Woodrow A. and Anders E. (1979) Lunar basalts and pristine highland rocks: Comparison of siderophile and volatile elements. *Proc. 10th Lunar Planet. Sci. Conf.* 2107-2130.