

12014
Olivine Basalt
159.4 grams

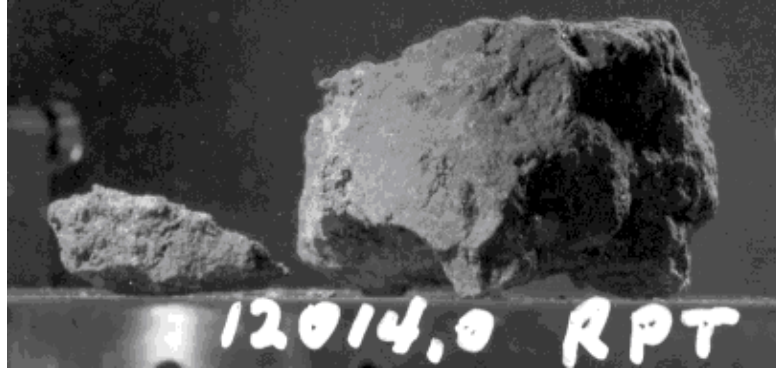


Figure 1: Original “mug shot” of 12014.0. NASA # S69-63385.
Sample is 4 cm.

Introduction

Although 12014 has been analyzed (MgO = 14%) and dated (3.29 ± 0.11 b.y.), it has not been studied petrographically. However, it appears to be an olivine basalt.

Petrography

Rhodes et al. (1977) describe the texture of 12014 as “porphyritic-subophitic” with partially resorbed olivine phenocrysts in a subophitic groundmass (figure 2). Reid (1971) describe it as “olivine-bearing fine-grained acicular to sub-ophitic basalt”. Neal et al. (1994) determined the mode of 12014 and classify it as an olivine basalt based on its chemical composition.

The early crystallization of olivine depletes the composition of the melt in Mg compared to Fe during the crystallization sequence and the compositional variation of early chromites reflects the changing composition of the liquid (Reid 1971).

Mineralogy

Olivine: Olivine is zoned in composition from Fe/(Fe+Mn+Mg) = 0.3 to 0.58 (Reid 1971).

Spinel: Cr-rich spinel was studied by Reid (1971).

Mineralogical Mode for 12014

	Neal et al. 1994
Olivine	24.8
Pyroxene	46.7
Plagioclase	24.5
Ilmenite	0.6
Chromite +Usp	0.7
Mesostasis	2.6
“Silica”	

Chemistry

Rhodes et al. (1977) and Nyquist et al. (1977) determined the chemical composition of 12014 (table 1, figure 5). It is a rather mafic basalt with a relatively flat rare earth element pattern (figure 4).

Radiogenic age dating

Nyquist et al. (1979) determined a Rb-Sr mineral isochron for 12014 with age 3.29 ± 0.11 b.y. (figure 6).

Other Studies

Bogard et al. (1971) reported the content and isotopic composition of rare gases in 12014.

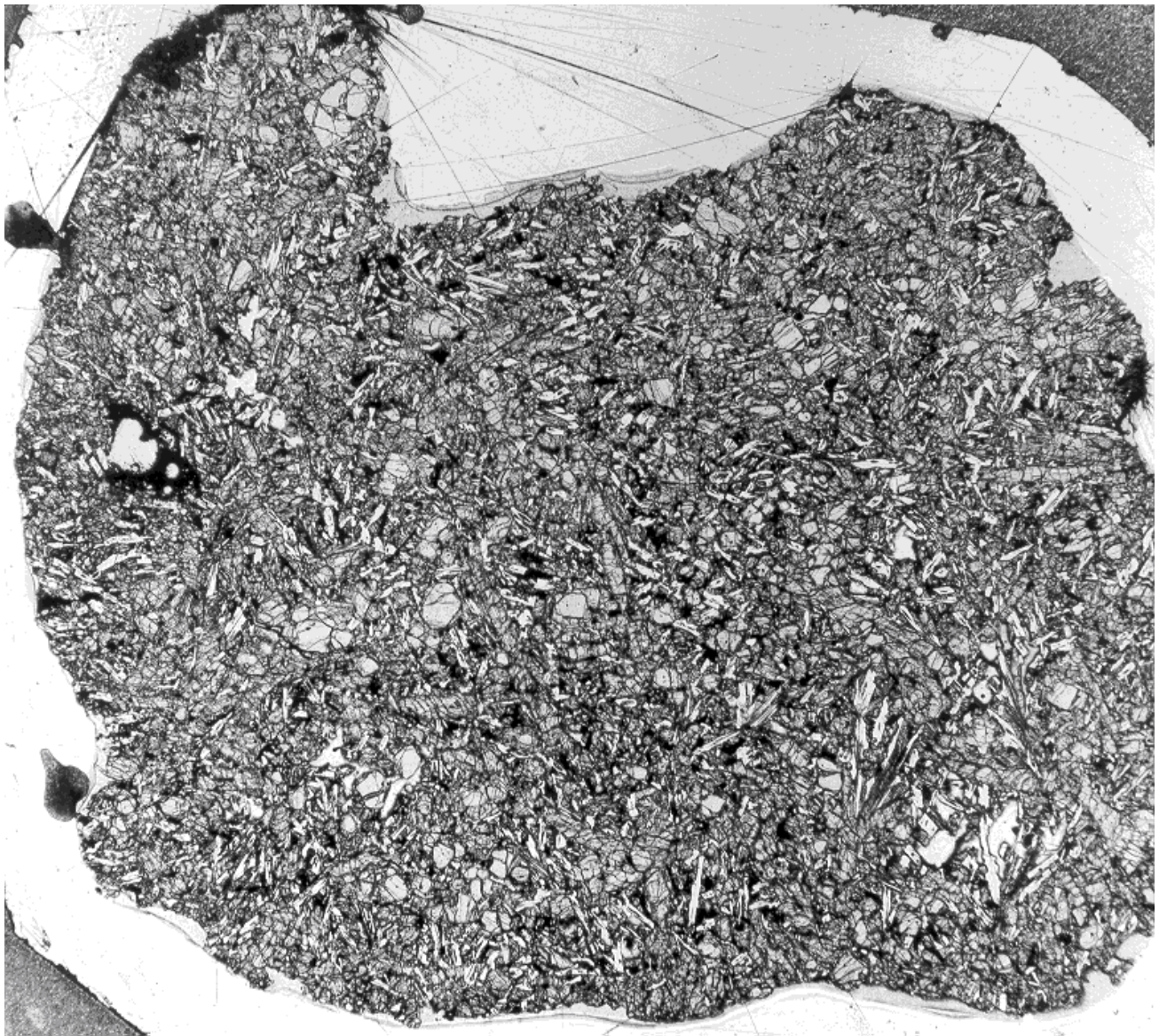


Figure 2: Photomicrograph of thin section 12014,9. NASA photo # S70-25883. Scale = 3 cm.

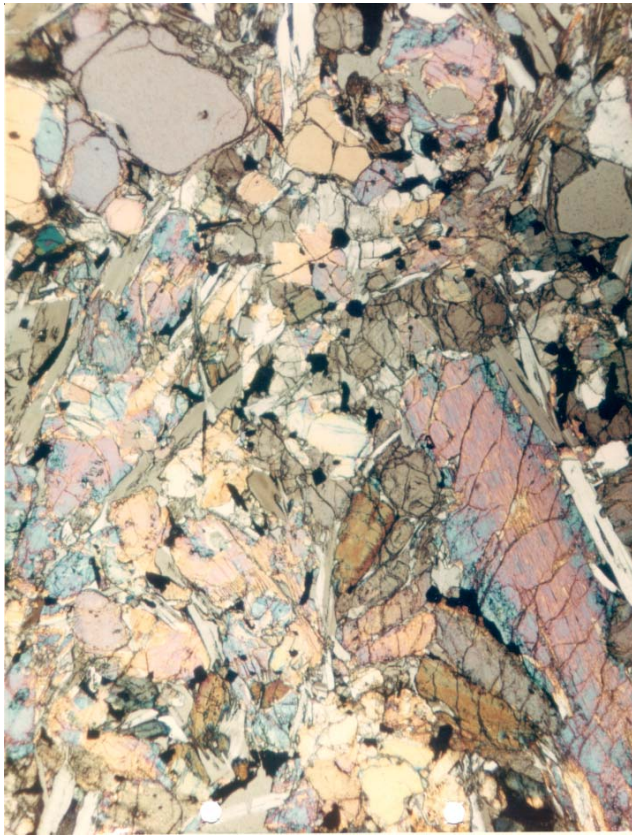


Figure 3: Thin section photomicrograph with partially crossed-nicols, showing olivine and zoned pyroxene phenocrysts. NASA photo# S70-20964. Scale about 2.5 mm.

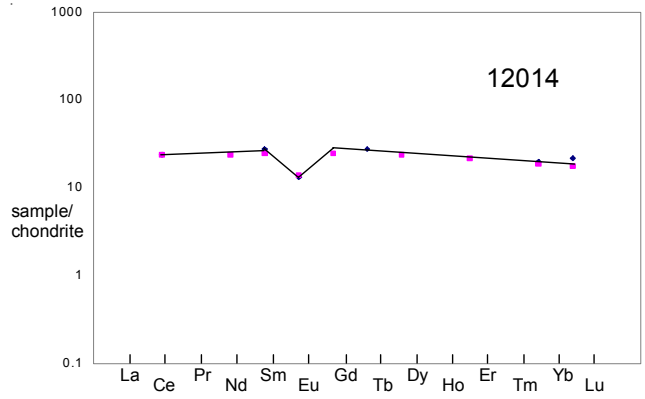


Figure 4: Normalized rare-earth-element diagram for 12014 (data from Nyquist et al. 1977).

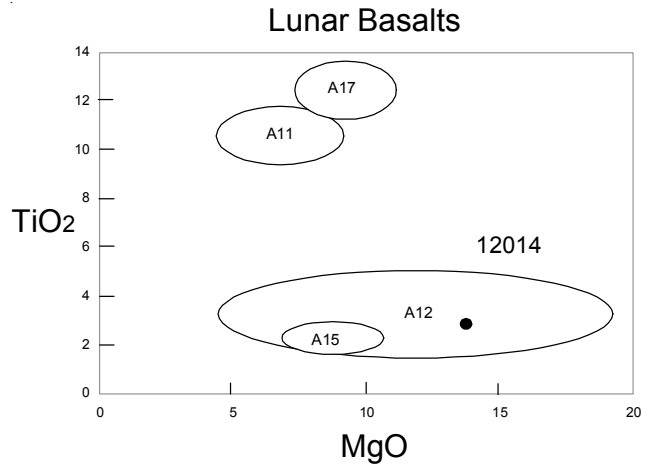


Figure 5: Chemical composition of lunar basalts with 12014 shown.

List of Photo #s for 21014

- S69-63351-359 B & W mug
- S69-63378-385
- S69-64101-102 color
- S69-64126-127
- S70-25883
- S70-25403-404
- S70-49172-179 TS

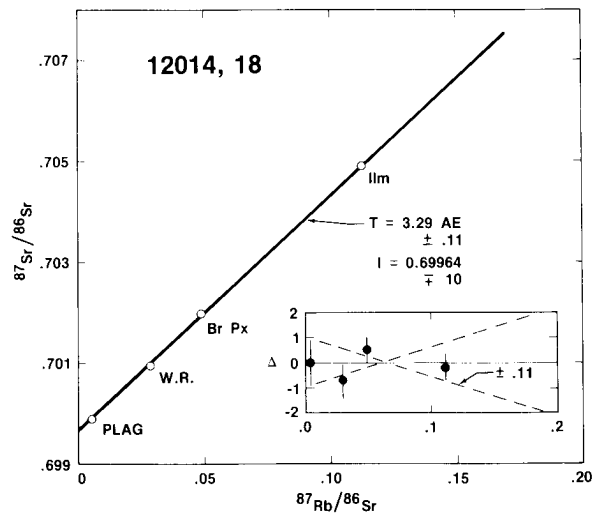


Figure 6: Rb-Sr mineral isochron for 12014 (from Nyquist et al. 1979).

Summary of Age Data for 12014

	Ar/Ar	Rb/Sr
Nyquist et al. 1979		3.29 ± 0.11 b.y.

Caution: decay constant.

Table 1. Chemical composition of 12014.

reference weight	Rhodes77	Nyquist77 50 mg	Baedecker71
SiO ₂ %	45.34	(c)	
TiO ₂	2.68	(c)	
Al ₂ O ₃	8	(c)	
FeO	20.33	(c)	
MnO	0.26	(c)	
MgO	13.85	(c)	
CaO	8.63	(c)	
Na ₂ O	0.21	(a)	
K ₂ O	0.06	(c)	0.048 (b)
P ₂ O ₅	0.05	(c)	
S %	0.07	(c)	
sum			
Sc ppm	42.8	(a)	
V			
Cr	4450	(a)	
Co	54	(a)	
Ni	40	(a)	
Cu			
Zn			1.2 (d)
Ga			2.9 (d)
Ge ppb			
As			
Se			
Rb		0.926 (b)	
Sr	93 (c)	90.4 (b)	
Y	32 (c)		
Zr	101 (c)		
Nb	6.8 (c)		
Mo			
Ru			
Rh			
Pd ppb			
Ag ppb			
Cd ppb			2 (d)
In ppb			0.6 (d)
Sn ppb			
Sb ppb			
Te ppb			
Cs ppm			
Ba	53 (b)	53.2 (b)	
La			
Ce	14.7 (a)	14.4 (b)	
Pr			
Nd		10.9 (b)	
Sm	4.14 (a)	3.7 (b)	
Eu	0.75 (a)	0.795 (b)	
Gd		4.97 (b)	
Tb	1.01 (a)		
Dy		5.92 (b)	
Ho			
Er		3.56 (b)	
Tm			
Yb	3.3 (a)	3.1 (b)	
Lu	0.53 (a)	0.433 (b)	
Hf	3.3 (a)		
Ta			
W ppb			
Re ppb			
Os ppb			
Ir ppb			0.05 (d)
Pt ppb			
Au ppb			
Th ppm			
U ppm			
technique	(a) INAA,	(b) IDMS,	(c) XRF, (d) RNAA

References for 12014

Baedecker P.A., Schaudy R., Elzie J.L., Kimberlin J., and Wasson J.T. (1971) Trace element studies of rocks and soils from Oceanus Procellarum and Mare Tranquilitatis. *Proc. 2nd Lunar Sci. Conf.* 1037-1061.

Bogard D.D., Funkhouser J.G., Schaeffer O.A. and Zahringer J. (1971) Noble gas abundances in lunar material-cosmic ray spallation products and radiation ages from the Sea of Tranquillity and the Ocean of Storms. *J. Geophys. Res.* **76**, 2757-2779.

LSPET (1970) Preliminary examination of lunar samples from Apollo 12. *Science* **167**, 1325-1339.

Neal C.R., Hacker M.D., Snyder G.A., Taylor L.A., Liu Y.-G. and Schmitt R.A. (1994a) Basalt generation at the Apollo 12 site, Part 1: New data, classification and re-evaluation. *Meteoritics* **29**, 334-348.

Neal C.R., Hacker M.D., Snyder G.A., Taylor L.A., Liu Y.-G. and Schmitt R.A. (1994b) Basalt generation at the Apollo 12 site, Part 2: Source heterogeneity, multiple melts and crustal contamination. *Meteoritics* **29**, 349-361.

Nyquist L.E., Bansal B.M., Wooden J. and Wiesmann H. (1977) Sr-isotopic constraints on the petrogenesis of Apollo 12 mare basalts. *Proc. 8th Lunar Sci. Conf.* 1383-1415.

Nyquist L.E., Shih C.-Y., Wooden J.L., Bansal B.M. and Wiesmann H. (1979) The Sr and Nd isotopic record of Apollo 12 basalts: Implications for lunar geochemical evolution. *Proc. 10th Lunar Planet. Sci. Conf.* 77-114.

Papike J.J., Hodges F.N., Bence A.E., Cameron M. and Rhodes J.M. (1976) Mare basalts: Crystal chemistry, mineralogy and petrology. *Rev. Geophys. Space Phys.* **14**, 475-540.

Reid J.B. (1971) Apollo 12 spinels as petrogenetic indicators. *Earth Planet. Sci. Lett.* **10**, 351-356.

Rhodes J.M., Blanchard D.P., Dungan M.A., Brannon J.C., and Rodgers K.V. (1977) Chemistry of Apollo 12 mare basalts: Magma types and fractionation processes. *Proc. 8th Lunar Sci. Conf.* 1305-1338.