

14274
Crystalline matrix Breccia
15.18 grams



Figure 1: Photos of 14274. Scale in cm. S71-26623 - 622.

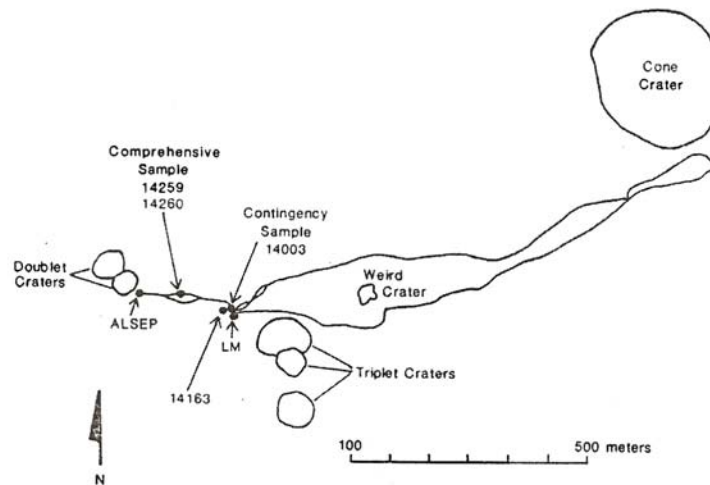


Figure 2: Map of Apollo 14 traverse showing location of comprehensive sample.

Introduction

14274 is one of the samples collected as part of the comprehensive sample (figure 2). It has a rounded surface with zap pits (figure 1). It is a coherent microbreccia with crystalline matrix. It has not been dated.

Petrography

Phinney et al. (1975) and Simonds et al. (1977) classify 14274 as a crystalline-matrix breccia. It has a seriate

grain size distribution and most clasts are individual minerals (figure 3).

Chemistry

None

Processing

14274 was returned in weigh bag 1039, in ALSRC 1007. There are 3 thin sections.

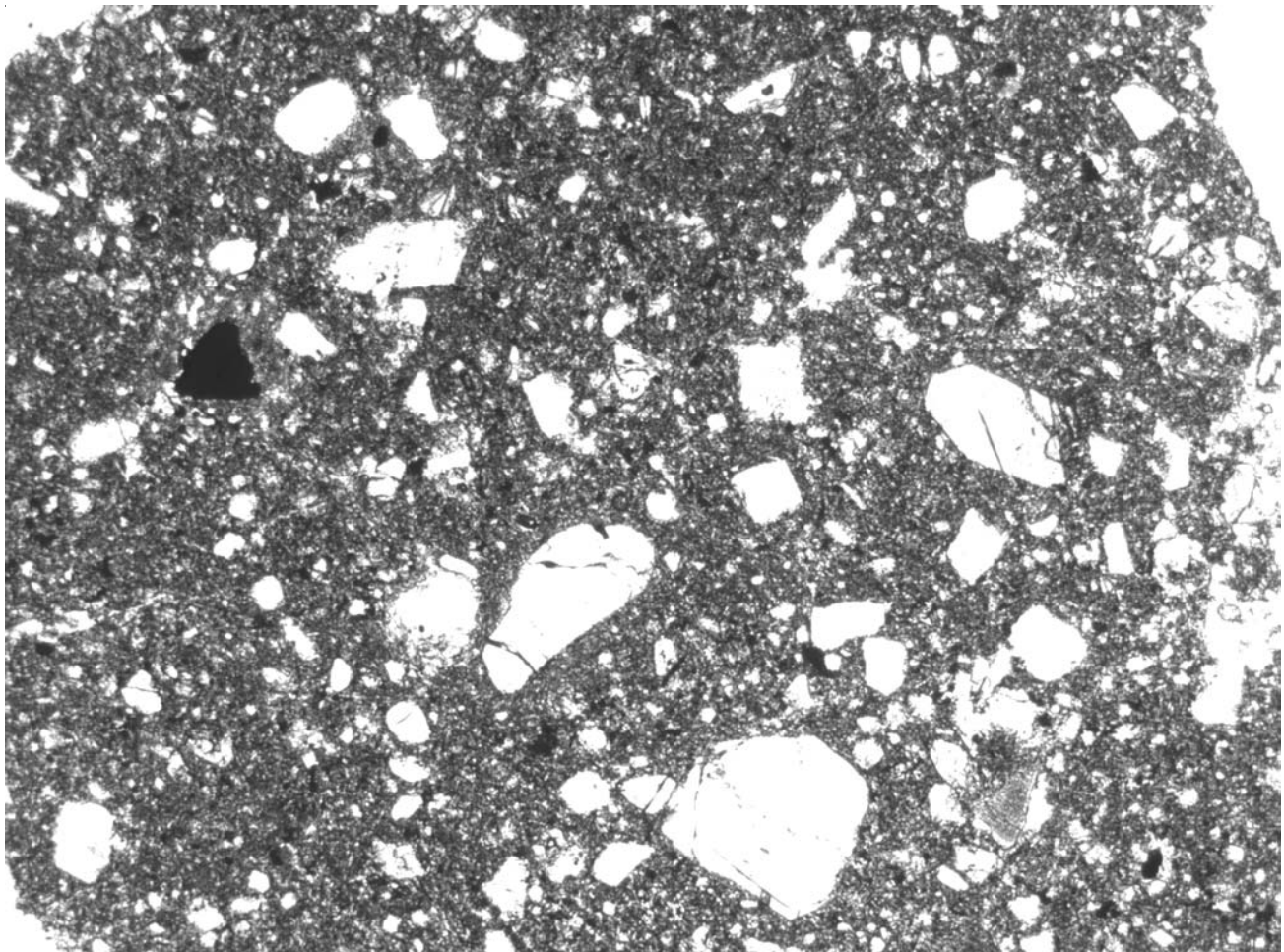
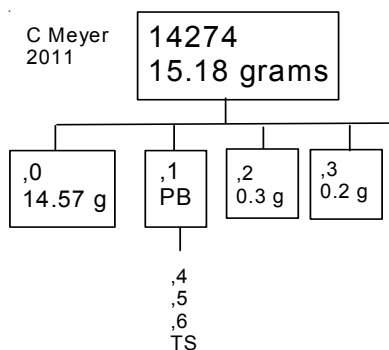


Figure 3: Photomicrograph of thin section 14274,5 by C Meyer. Scale = 2.8 mm across.



References for 14274

Carlson I.C. and Walton W.J.A. (1978) **Apollo 14 Rock Samples**. Curators Office. JSC 14240

Phinney W.C., Simonds C.H. and Warner J. (1975) Description, Classification and Inventory of the Comprehensive sample from Apollo 14. Curator's Catalog, pp. 46.

Simonds C.H., Phinney W.C., Warner J.L., McGee P.E., Geeslin J., Brown R.W. and Rhodes J.M. (1977) Apollo 14 revisited, or breccias aren't so bad after all. *Proc. 8th Lunar Sci. Conf.* 1869-1893.

Swann G.A., Trask N.J., Hait M.H. and Sutton R.L. (1971a) Geologic setting of the Apollo 14 samples. *Science* **173**, 716-719.

Swann G.A., Bailey N.G., Batson R.M., Eggleton R.E., Hait M.H., Holt H.E., Larson K.B., Reed V.S., Schaber G.G., Sutton R.L., Trask N.J., Ulrich G.E. and Wilshire H.G. (1977) Geology of the Apollo 14 landing site in the Fra Mauro Highlands. U.S.G.S. Prof. Paper 880.

Swann G.A., Bailey N.G., Batson R.M., Eggleton R.E., Hait M.H., Holt H.E., Larson K.B., McEwen M.C., Mitchell E.D., Schaber G.G., Schafer J.P., Shepard A.B., Sutton R.L., Trask N.J., Ulrich G.E., Wilshire H.G. and Wolfe E.W. (1972) 3. Preliminary Geologic Investigation of the Apollo 14 landing site. *In* Apollo 14 Preliminary Science Rpt. NASA SP-272. pages 39-85.

Wilshire H.G. and Jackson E.D. (1972b) Petrology and stratigraphy of the Fra Mauro Formation at the Apollo 14 site. US Geol. Survey Prof. Paper 785