

14317
 Vitric-matrix Breccia
 16.1 grams

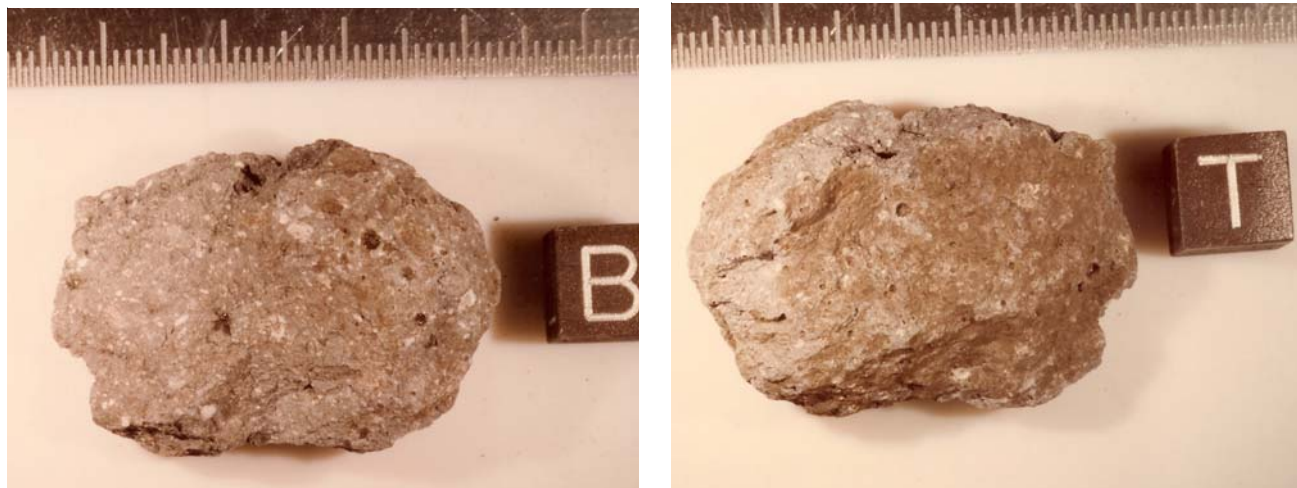


Figure 1: Photos of 14317. Cube is 1 cm. S78-29056 and 057

Introduction

14317 was picked up at the “North Boulder Field” (station H) about 100 meters northwest of the LM. It is a rounded slab with a patina on one side and a few zap pits on all sides (figure 1). The rock is a coherent gray-matrix breccia with a small percentage of light clasts up to 3 mm across. This sample has not been studied.

Petrography

Carlson and Walton (1978) give the only description of 14317. They reported glass and devitrified glass in the matrix, with numerous fine-grained microbreccia clasts. Most of the mineral fragments are deformed pyroxene.

Chemistry

None

Processing

14317 was returned in weigh bag 1038 which was opened in the Crew Reception Area before the sample was entered into the NNPL for description. There is only one thin section.

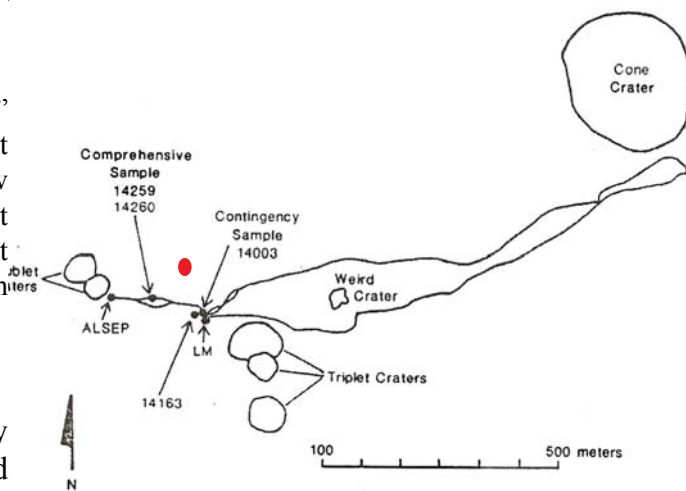
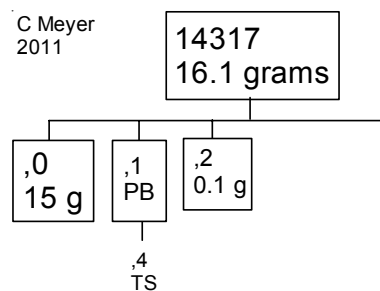


Figure 2: Location of 14317.



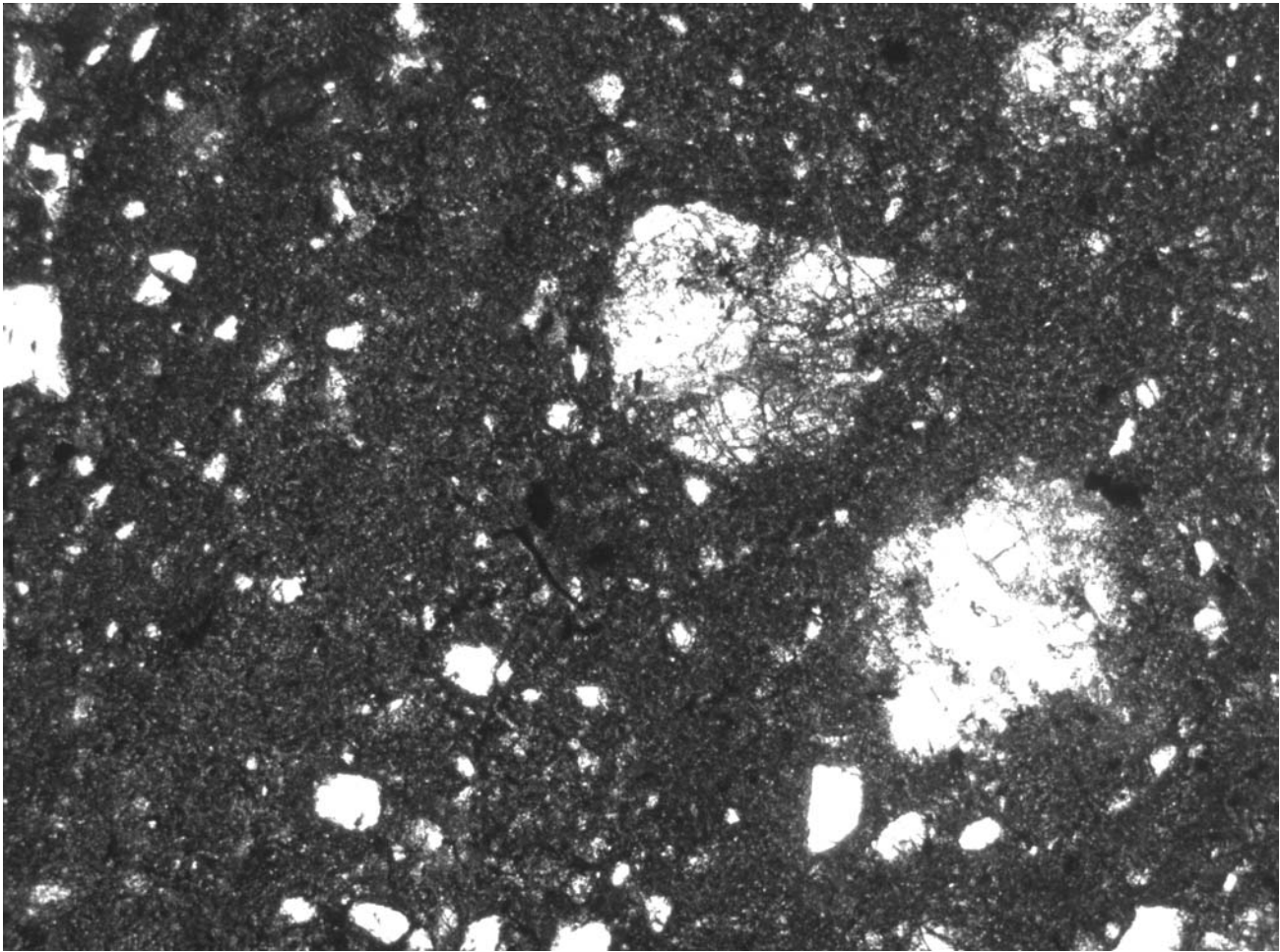


Figure 3: Photomicrograph of thin section 14317,4 by C Meyer. Scale is 2.8 mm across.

References for 14317

Carlson I.C. and Walton W.J.A. (1978) **Apollo 14 Rock Samples**. Curators Office. JSC 14240

LSPET (1971a) Preliminary examination of lunar samples from Apollo 14. *Science* **173**, 681-693.

LSPET (1971b) Preliminary examination of lunar samples from Apollo 14. *In Apollo 14 Preliminary Sci. Rpt. NASA SP-272*

Simonds C.H., Phinney W.C., Warner J.L., McGee P.E., Geeslin J., Brown R.W. and Rhodes J.M. (1977) Apollo 14 revisited, or breccias aren't so bad after all. *Proc. 8th Lunar Sci. Conf.* 1869-1893.

Swann G.A., Trask N.J., Hait M.H. and Sutton R.L. (1971a) Geologic setting of the Apollo 14 samples. *Science* **173**, 716-719.

Swann G.A., Bailey N.G., Batson R.M., Eggleton R.E., Hait M.H., Holt H.E., Larson K.B., Reed V.S., Schaber G.G., Sutton R.L., Trask N.J., Ulrich G.E. and Wilshire H.G. (1977) Geology of the Apollo 14 landing site in the Fra Mauro Highlands. U.S.G.S. Prof. Paper 880.

Swann G.A., Bailey N.G., Batson R.M., Eggleton R.E., Hait M.H., Holt H.E., Larson K.B., McEwen M.C., Mitchell E.D., Schaber G.G., Schafer J.P., Shepard A.B., Sutton R.L., Trask N.J., Ulrich G.E., Wilshire H.G. and Wolfe E.W. (1972) 3. Preliminary Geologic Investigation of the Apollo 14 landing site. *In Apollo 14 Preliminary Science Rpt. NASA SP-272*. pages 39-85.

Warner J.L. and Duke M.B. (1971) Apollo 14 lunar sample information catalog. NASA TM X-58062.

Wilshire H.G. and Jackson E.D. (1972b) Petrology and stratigraphy of the Fra Mauro Formation at the Apollo 14 site. US Geol. Survey Prof. Paper 785