

15695, 15696 and 15697

Vesicular Mare Basalt

10.67, 12.83 and 4.13 grams

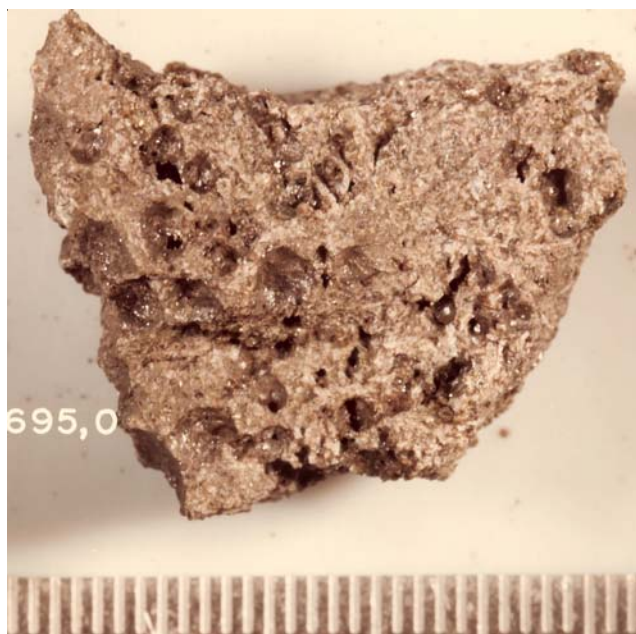


Figure 1: Photo of 15695. Scale in cm/mm. S75-33962.

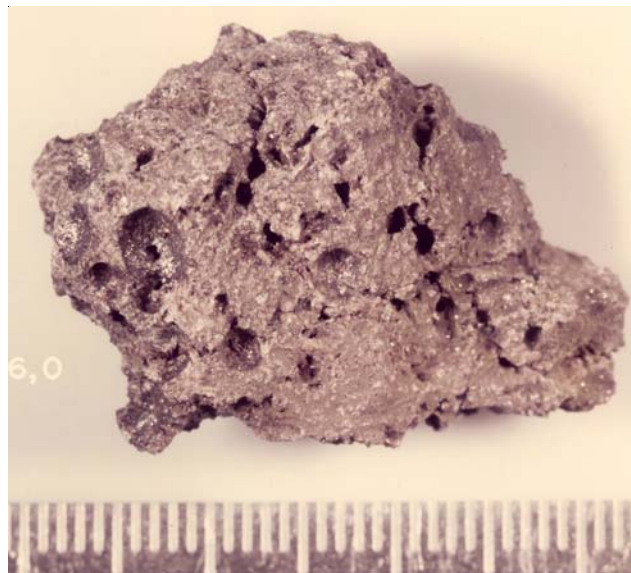


Figure 2: Photo of 15696. Scale is in cm. S75-33959.

Introduction

These three chips of mare basalt were split out of the station 9a rake sample in 1975 and have not been studied. There are no thin sections. See section of 15614 for probable description.

References for 15695, 15696 and 15697.

Ryder G. (1985) Catalog of Apollo 15 Rocks (three volumes). Curatorial Branch Pub. # 72, JSC#20787

Swann G.A., Hait M.H., Schaber G.C., Freeman V.L., Ulrich G.E., Wolfe E.W., Reed V.S. and Sutton R.L. (1971b) Preliminary description of Apollo 15 sample environments. U.S.G.S. Interagency report: 36. pp219 with maps

Swann G.A., Bailey N.G., Batson R.M., Freeman V.L., Hait M.H., Head J.W., Holt H.E., Howard K.A., Irwin J.B., Larson K.B., Muehlberger W.R., Reed V.S., Rennilson J.J., Schaber G.G., Scott D.R., Silver L.T., Sutton R.L., Ulrich G.E., Wilshire H.G. and Wolfe E.W. (1972) 5. Preliminary Geologic Investigation of the Apollo 15 landing site. In Apollo 15 Preliminary Science Rpt. NASA SP-289. pages 5-1-112.



Figure 3: Photo of 15697. Scale is in mm/cm.

