

67565 – 10.4 grams
67668 – 3.6 grams
 Impact Melt Breccia

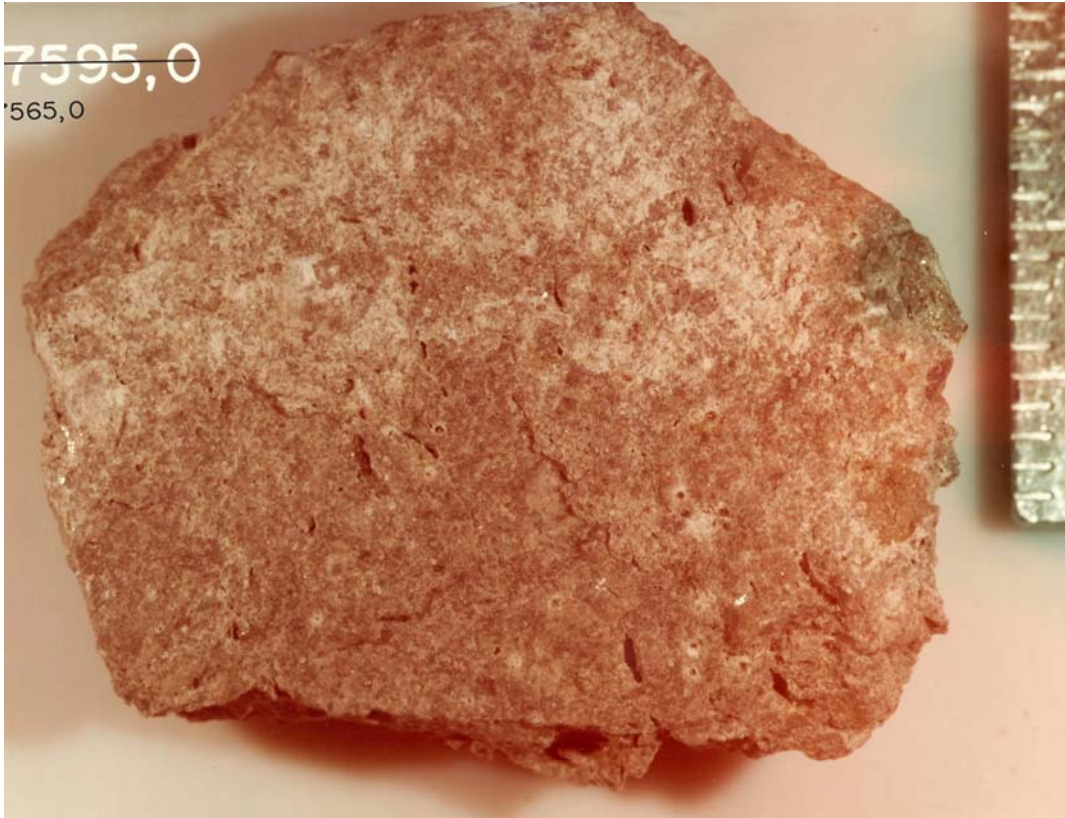


Figure 1: Photo of 67565. Scale in mm. S80-35154

Introduction

67565 and 67668 are rake samples from the south rim of North Ray Crater – see sections on 67481 and 67601. They have similar micropoikilitic texture with interlocking oikocrysts of pyroxene surrounding chadocrysts of plagioclase. Ilmenite is concentrated at the boundaries of the pyroxene oikocrysts. They also have similar composition.

Chemistry

Stoffler et al. (1985) reported the bulk composition based on defocused beam analysis of thin sections. Wanke received splits for analysis.

Processing

There is one thin section of each (figure 3).

Table 1. Chemical composition of 67565

	67565	67668	
<i>reference weight</i>	Stoffler85		
SiO2 %	46.2	46.5	(a)
TiO2	0.55	0.63	(a)
Al2O3	21.9	20.8	(a)
FeO	5.8	6.3	(a)
MnO	0.07	0.08	(a)
MgO	11.4	11.7	(a)
CaO	13	13.1	(a)
Na2O	0.43	0.44	(a)
K2O	0.21	0.21	(a)
P2O5	0.19	0.2	(a)
S %			
<i>sum</i>			
	(a) broad beam e. probe		



Figure 2: Photo of 67668. Scale in mm. S72-49541

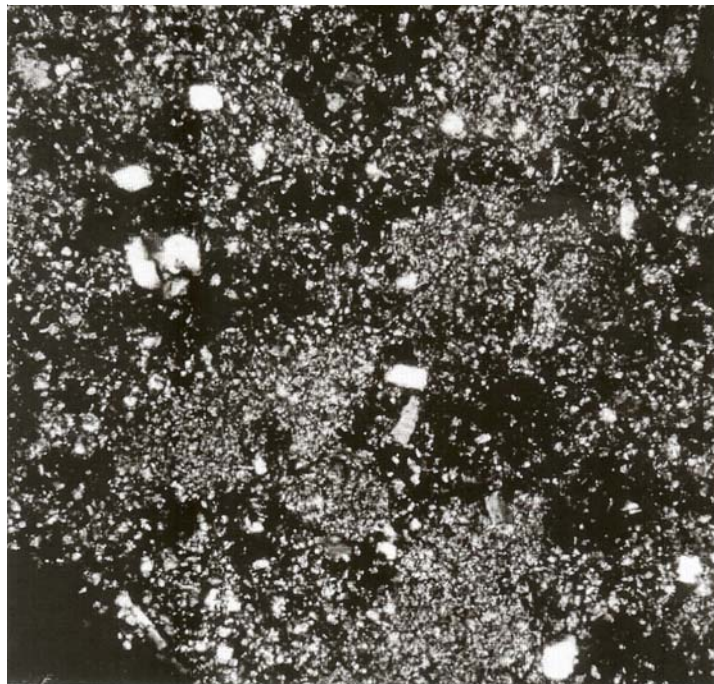
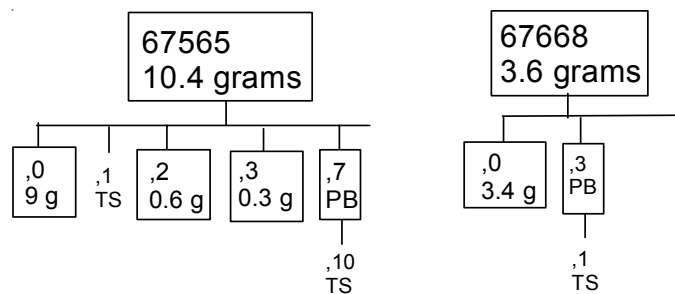


Figure 3: Thin section, with crossed nicols, of 67668 showing poikilotic texture.



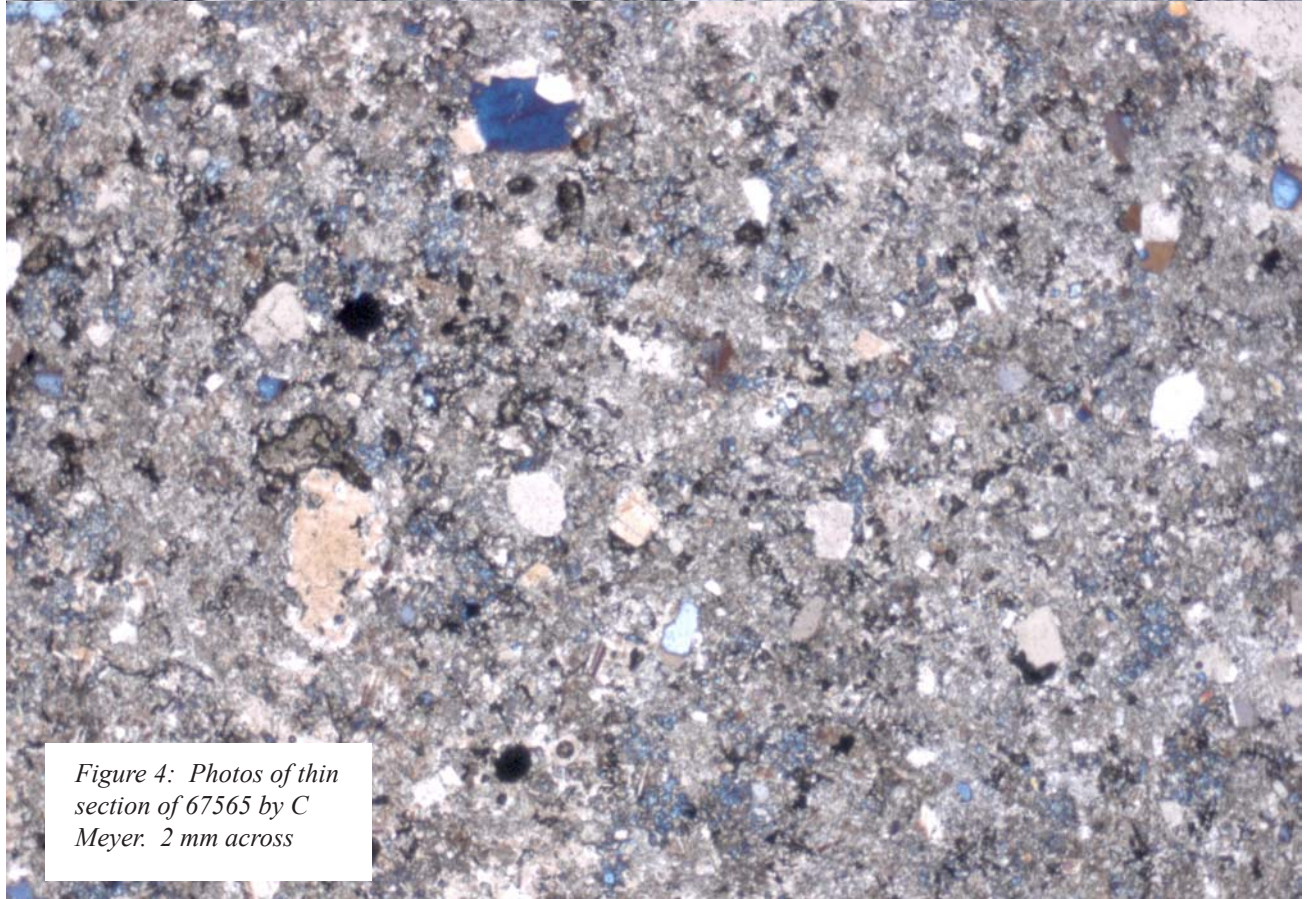
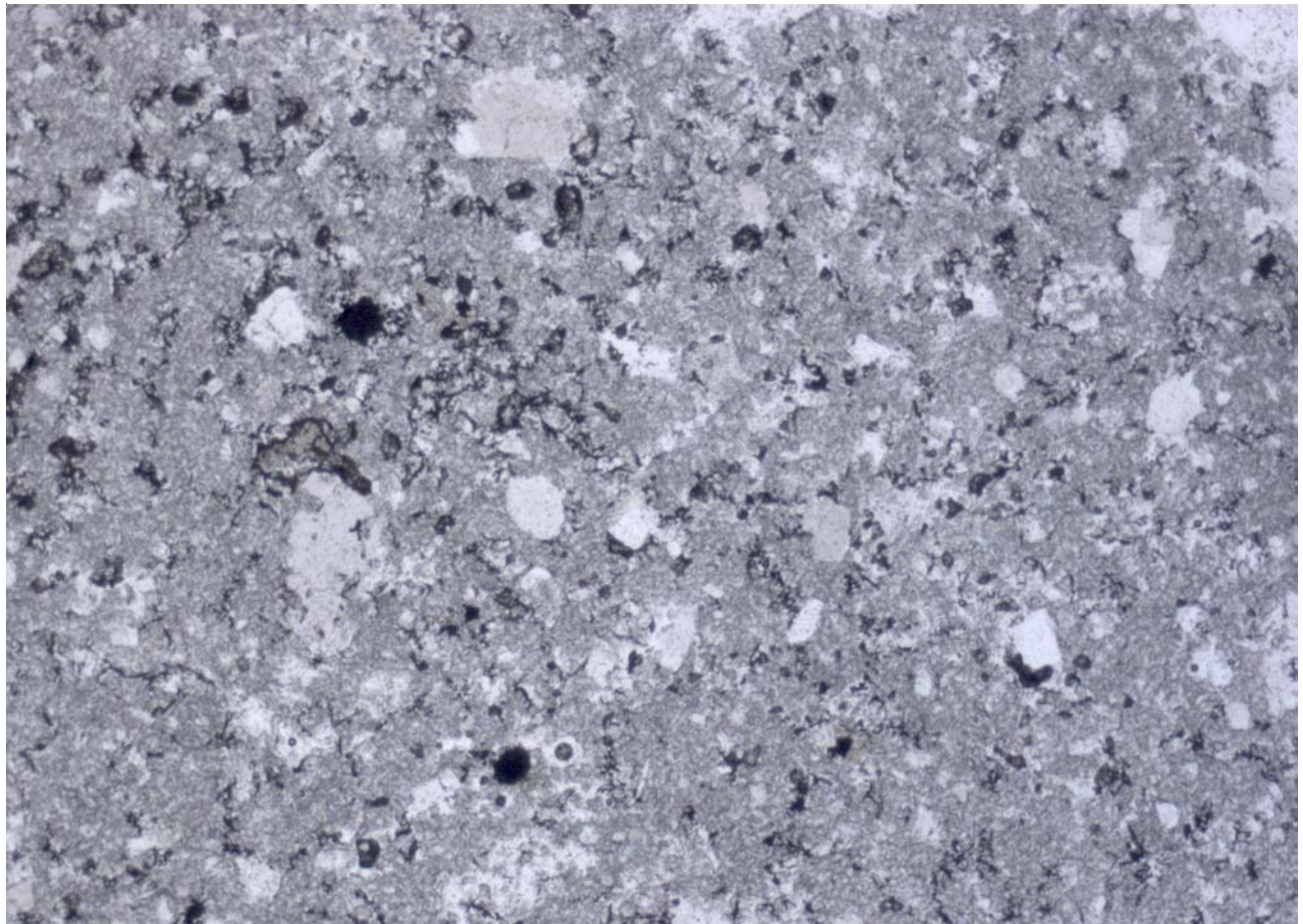


Figure 4: Photos of thin section of 67565 by C Meyer. 2 mm across

References for 67565 and 67668

Butler P. (1972a) Lunar Sample Information Catalog Apollo 16. Lunar Receiving Laboratory. MSC 03210 Curator's Catalog. pp. 370.

Hunter R.H. and Taylor L.A. (1981) Rust and schreibersite in Apollo 16 highland rocks: Manifestations of volatile-element mobility. *Proc. 12th Lunar Planet. Sci. Conf.* 253-259.

LSPET (1973b) The Apollo 16 lunar samples: Petrographic and chemical description. *Science* **179**, 23-34.

LSPET (1972c) Preliminary examination of lunar samples. In Apollo 16 Preliminary Science Report. NASA SP-315, 7-1—7-58.

Ryder G. and Norman M.D. (1980) Catalog of Apollo 16 rocks (3 vol.). Curator's Office pub. #52, JSC #16904

Smith J.V. and Steele I.M. (1972c) Apollo 16 rake samples 67515 to 68537: Sample classification, description and inventory. Curator Catalog, JSC

Stöffler D., Ostertag R., Reimold W.U., Borchardt R., Malley J. and Rehfeldt A. (1981) Distribution and provenance of lunar highland rock types at North Ray Crater, Apollo 16. *Proc. 12th Lunar Planet. Sci. Conf.* 185-207.

Stöffler D., Bischoff A., Borchardt R., Burghele A., Deutsch A., Jessberger E.K., Ostertag R., Palme H., Spettel B., Reimold W.U., Wacker K. and Wanke H. (1985) Composition and evolution of the lunar crust in the Descartes highlands. *Proc. 15th Lunar Planet. Sci. Conf.* in *J. Geophys. Res.* **90**, C449-C506.

Sutton R.L. (1981) Documentation of Apollo 16 samples. In *Geology of the Apollo 16 area, central lunar highlands.* (Ulrich et al.) U.S.G.S. Prof. Paper 1048.