

67736

Crystalline Impact Breccia

14.9 grams

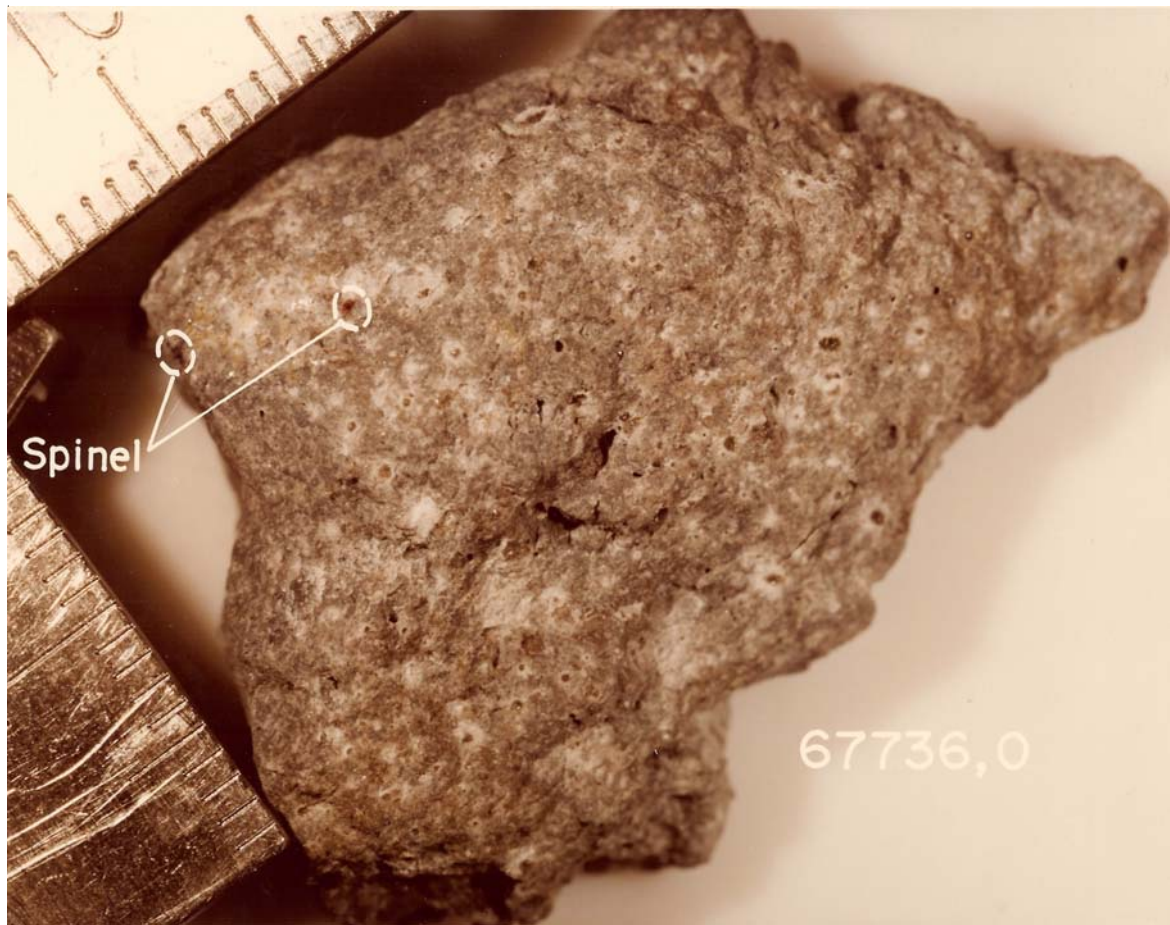


Figure 1: Photo of 67736 with pink spinel. Scale bar in mm. S80-28529

Introduction

67736 is a rake sample collected from the rim of North Ray Crater – see section on 67701. It has zap pits (figure3).

Petrography

Stoffler et al. (1981) describe the matrix as “micropoikilitic”. Photos of the exterior show what appears to be pink spinel (?) grains (not confirmed).

Chemistry

None

Radiogenic age dating

Not

Processing

There is only one thin section.

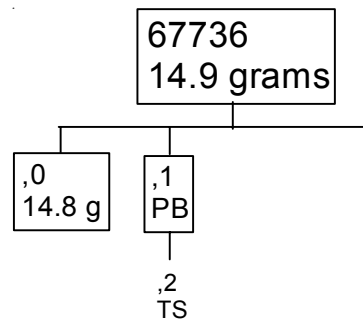


Figure 2: Thin section photomicrograph of 67736,2. 2 mm across

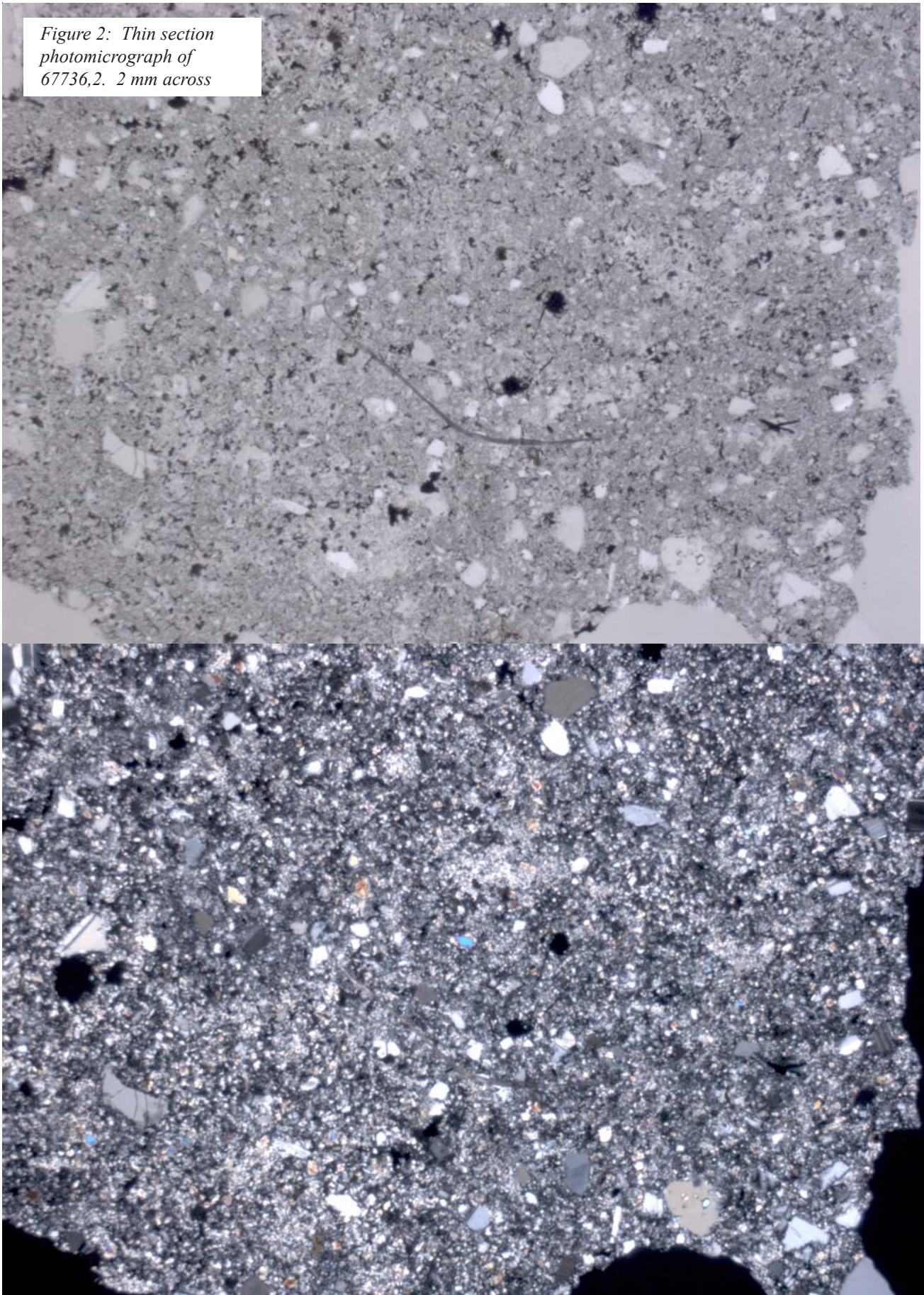




Figure 3: Close up photo of pink spinel (?) in 67736. Scale in mm. S72-49553

References for 67736

Butler P. (1972a) Lunar Sample Information Catalog Apollo 16. Lunar Receiving Laboratory. MSC 03210 Curator's Catalog. pp. 370.

LSPET (1973b) The Apollo 16 lunar samples: Petrographic and chemical description. *Science* **179**, 23-34.

LSPET (1972c) Preliminary examination of lunar samples. In Apollo 16 Preliminary Science Report. NASA SP-315, 7-1—7-58.

Ryder G. and Norman M.D. (1980) Catalog of Apollo 16 rocks (3 vol.). Curator's Office pub. #52, JSC #16904

Smith J.V. and Steele I.M. (1972c) Apollo 16 rake samples 67515 to 68537: Sample classification, description and inventory. Curator Catalog, JSC

Stöffler D., Ostertag R., Reimold W.U., Borchardt R., Malley J. and Rehfeldt A. (1981) Distribution and provenance of lunar highland rock types at North Ray Crater, Apollo 16. *Proc. 12th Lunar Planet. Sci. Conf.* 185-207.

Stöffler D., Bischoff A., Borchardt R., Burghelle A., Deutsch A., Jessberger E.K., Ostertag R., Palme H., Spettel B., Reimold W.U., Wacker K. and Wanke H. (1985) Composition and evolution of the lunar crust in the Descartes highlands. *Proc. 15th Lunar Planet. Sci. Conf.* in *J. Geophys. Res.* **90**, C449-C506.

Sutton R.L. (1981) Documentation of Apollo 16 samples. In *Geology of the Apollo 16 area, central lunar highlands.* (Ulrich et al.) U.S.G.S. Prof. Paper 1048.