

68035
Cataclastic Anorthosite
21 grams

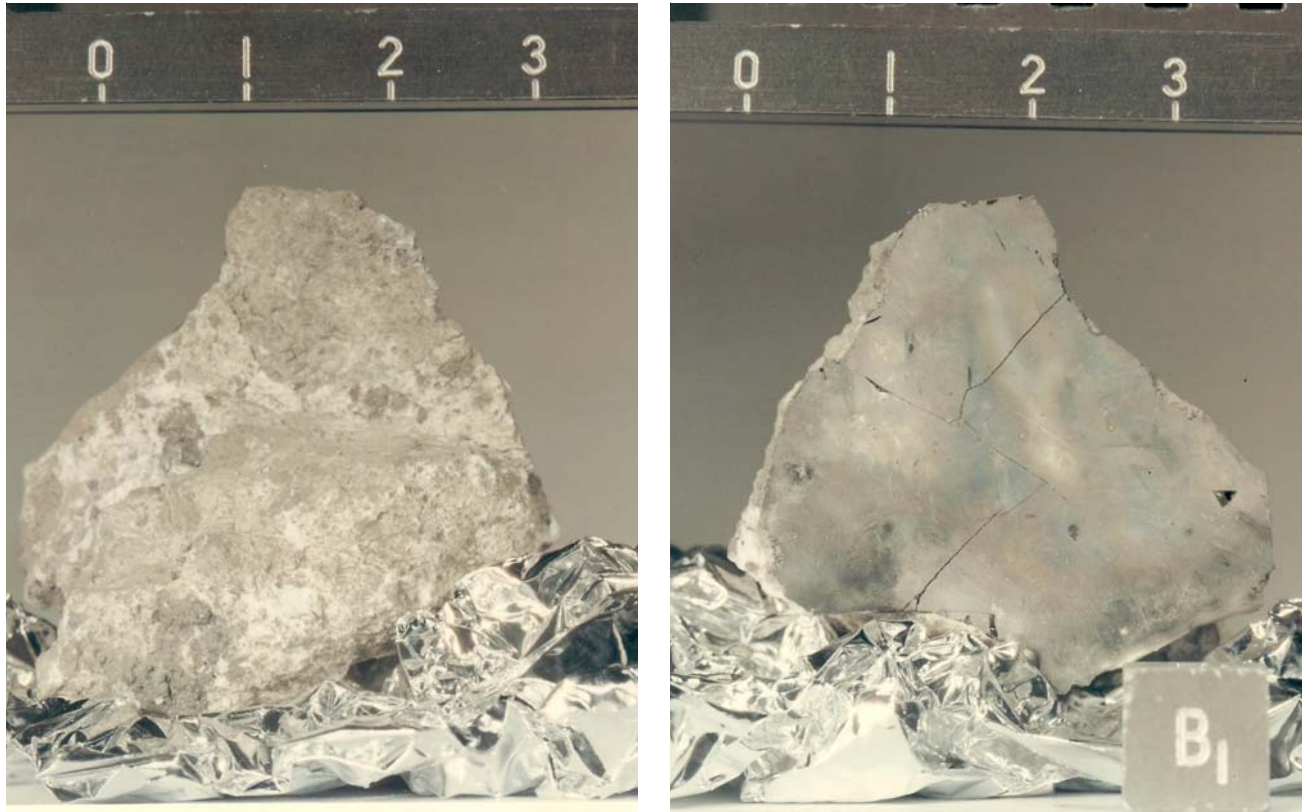


Figure 1 a, b: Front and back of 68035. Scale is in cm. S72-40517 and S72-40516.

Introduction

68035 was picked up separately from the surface adjacent to soil sample 68500 and rake sample 68510.

It contains a glass-coated white anorthosite, but the shiny glass coat is reported to have had a blue-green sheen to it. Micropoikilitic impact melt breccia surrounds the white anorthosite clast (figure 3). There is a thin section of each lithology – but no petrographic description nor mineral analyses.

Chemistry

The glass coating has been analyzed by See et al. (1986) and Morris et al. (1986) and the interior white rock has been roughly analyzed by See et al. (table).

Radiogenic age dating

Not

Cosmogenic isotopes and exposure ages

Rancitelli et al. (1973) determined the cosmic-ray-induced activity of $^{22}\text{Na} = 74$ dpm/kg., $^{26}\text{Al} = 211$ dpm/kg.

Processing

The bulk sample is in two pieces. There are two thin section (each different).

This thing kind of reminds me of a cheese sandwich.

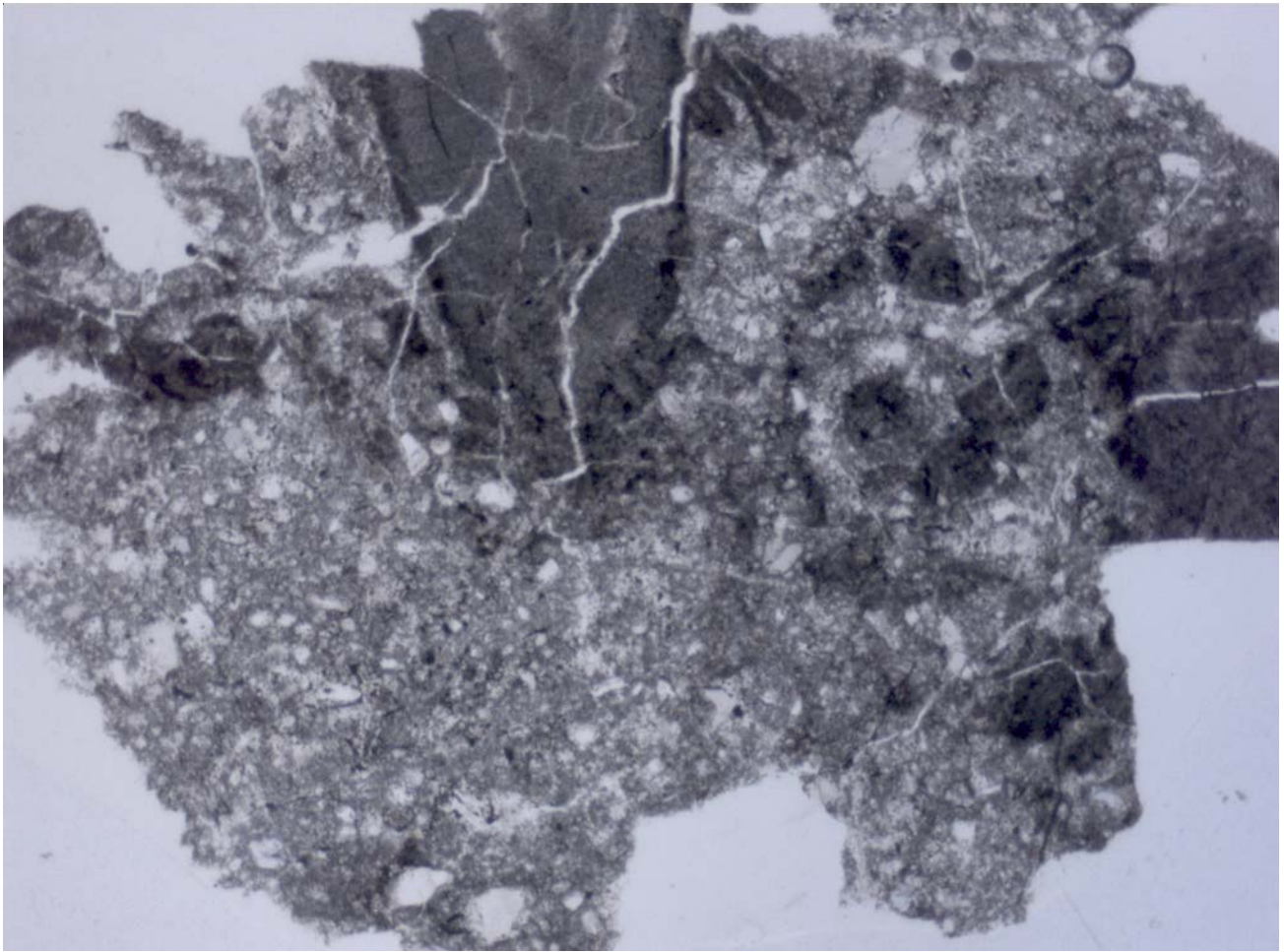


Figure 2: Photomicrograph of thin section of 68035 by C Meyer. 2 mm across

Table 1. Chemical composition of 68035

	glass		anor	
reference	Morris87	Rancitelli73	See87	
weight	See87			
SiO2 %	44.5 (b)		45.29 (b)	
TiO2	0.4 (a)		0.15 (b)	
Al2O3	25.91 (a)		31.87 (b)	
FeO	5.88 (a)		2.18 (b)	
MnO			0.04 (b)	
MgO	7.54 (b)		1.91 (b)	
CaO	14.5 (b)		17.77 (b)	
Na2O	0.48 (a)		0.64 (b)	
K2O	0.09 (a)	0.073 (c)	0.06 (b)	
P2O5				
S %				
sum				
Sc ppm	6.6 (a)			
V				
Cr	650 (a)			
Co	31 (a)			
Ni	5.08 (a)			
Cu				
Zn				
Ga				
Ge ppb				
As				
Se				
Rb				
Sr				
Y				
Zr				
Nb				
Mo				
Ru				
Rh				
Pd ppb				
Ag ppb				
Cd ppb				
In ppb				
Sn ppb				
Sb ppb				
Te ppb				
Cs ppm				
Ba	290 (a)			
La	7.09 (a)			
Ce	19.8 (a)			
Pr				
Nd				
Sm	3.24 (a)			
Eu	1.19 (a)			
Gd				
Tb	0.71 (a)			
Dy				
Ho				
Er				
Tm				
Yb	2.38 (a)			
Lu	0.36 (a)			
Hf	2.39 (a)			
Ta	0.33 (a)			
W ppb				
Re ppb				
Os ppb				
Ir ppb				
Pt ppb				
Au ppb				
Th ppm	1.89 (a)	0.91 (c)		
U ppm	0.52 (a)	0.23 (c)		

technique: (a) INAA, (b), (c) radiation count.

References for 68035

Butler P. (1972a) Lunar Sample Information Catalog Apollo 16. Lunar Receiving Laboratory. MSC 03210 Curator's Catalog. pp. 370.

Hunter R.H. and Taylor L.A. (1981) Rust and schreibersite in Apollo 16 highland rocks: Manifestations of volatile-element mobility. *Proc. 12th Lunar Planet. Sci. Conf.* 253-259.

LSPET (1973b) The Apollo 16 lunar samples: Petrographic and chemical description. *Science* **179**, 23-34.

LSPET (1972c) Preliminary examination of lunar samples. *In* Apollo 16 Preliminary Science Report. NASA SP-315, 7-1—7-58.

Morris R.V., See T.H. and Horz F. (1986) Composition of the Cayley Formation at Apollo 16 as inferred from impact melt splashes. *Proc. 17th Lunar Planet. Sci. Conf.* in *J. Geophys. Res.* **90**, E21-E42.

Rancitelli L.A., Perkins R.W., Felix W.D. and Wogman N.A. (1973) Lunar surface and solar process analyses from cosmogenic radionuclide measurements at the Apollo 16 site (abs). *Lunar Sci.* **IV**, 609-612. Lunar Planetary Institute, Houston.

Ryder G. and Norman M.D. (1980) Catalog of Apollo 16 rocks (3 vol.). Curator's Office pub. #52, JSC #16904

See T.H., Horz F. and Morris R.V. (1986) Apollo 16 impact-melt splashes: Petrography and major-element composition. *Proc. 17th Lunar Planet. Sci. Conf.* in *J. Geophys. Res.* **91**, E3-E20.

Sutton R.L. (1981) Documentation of Apollo 16 samples. *In* Geology of the Apollo 16 area, central lunar highlands. (Ulrich et al.) U.S.G.S. Prof. Paper 1048.

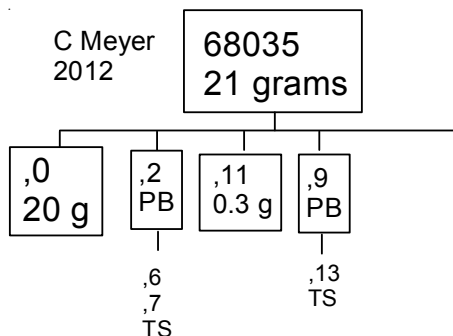




Figure 3: 68035 had a penetrating fracture down the middle. These are the two halves. S72-40518

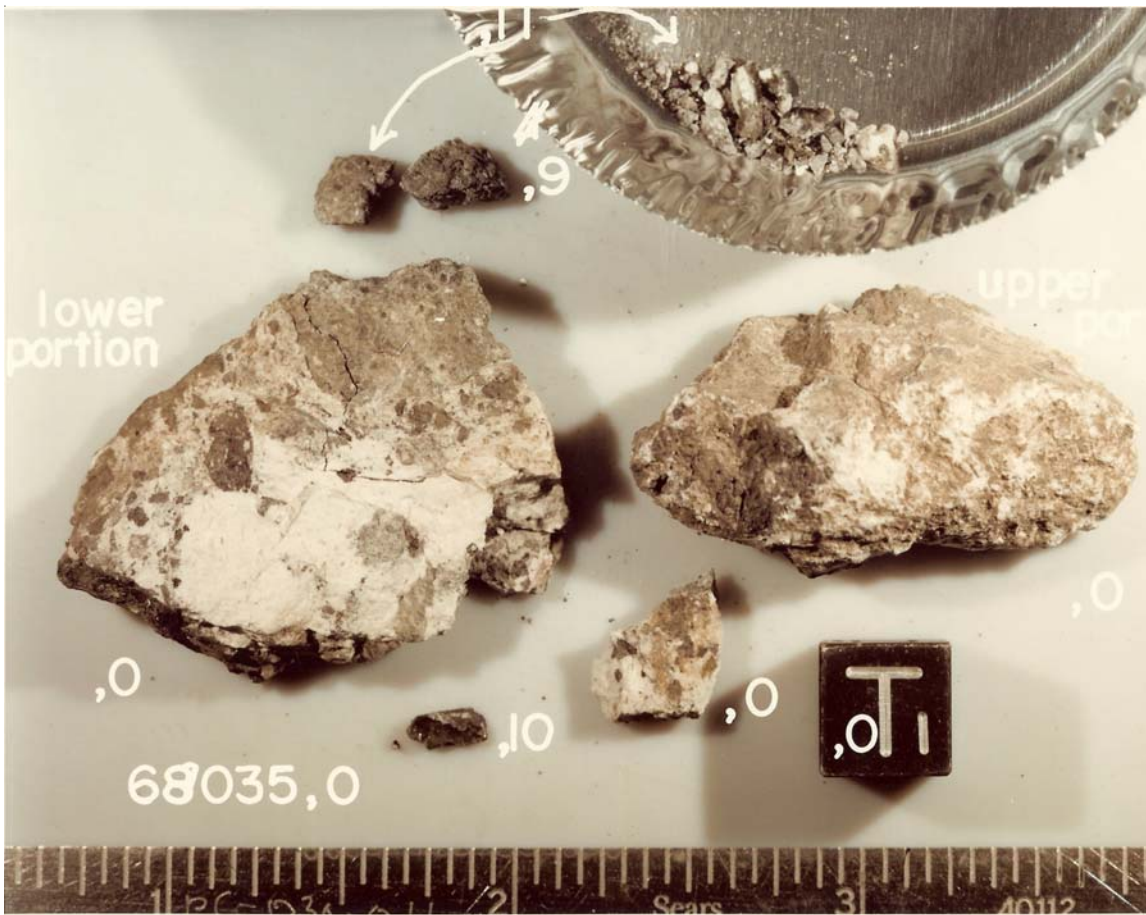


Figure 4: Processing photo of 68035. As you can see, the anorthosite clast is not very thick. Cube is 1 cm. S82-27856