

77516
Ilmenite Basalt
 103.7 grams

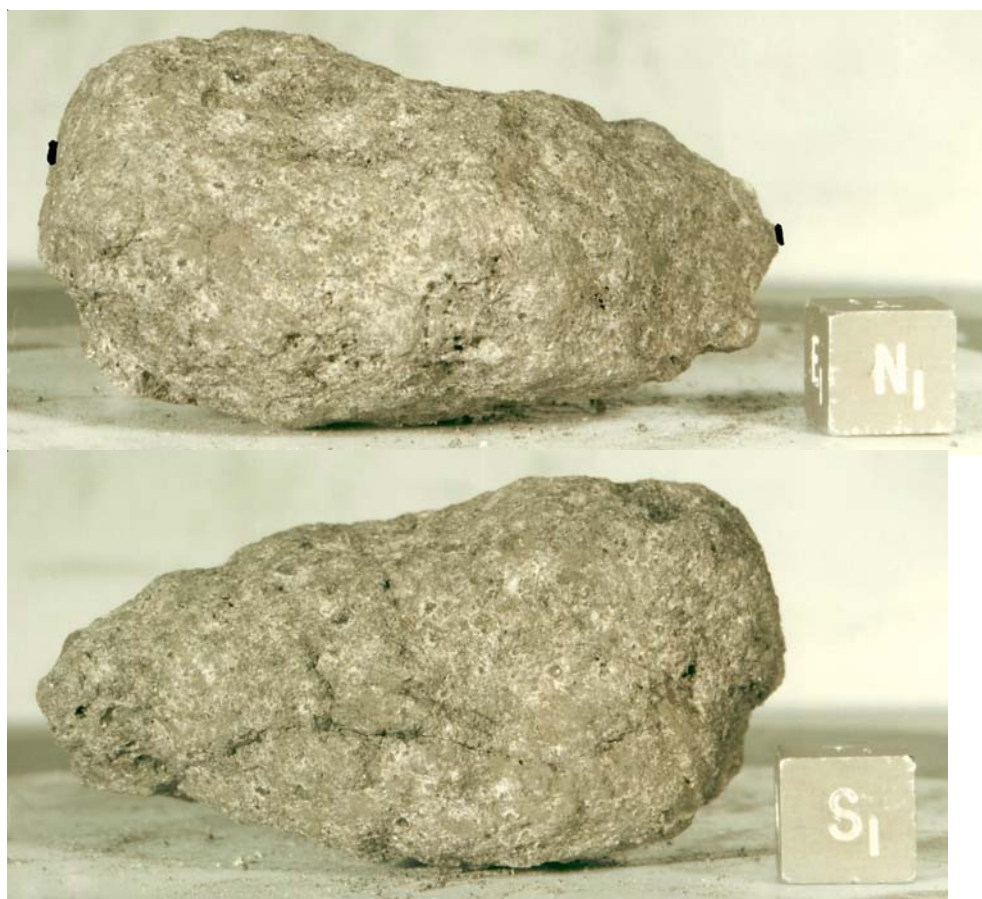


Figure 1: Two photos of 77516. Cube is 1 cm. S73-19411 and 413

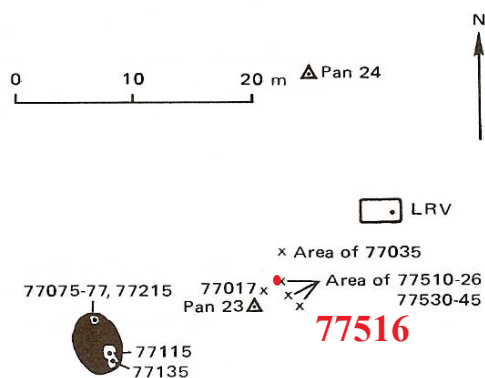


Figure 2: Map of station 7, Apollo 17 with location of rake sample.

Introduction

All sides of 77516 are rounded and pitted by micrometeorite bombardment (figure 1). It is a medium-grained, ilmenite-rich basalt with armalcolite and free silica.

77516 was collected as part of a rake sample from station 7 (figure 2). It has not been dated.

Petrography

77516 is an olivine-microporphyritic basalt similar to 71588 (Warner et al. 1975, 1978). Large ilmenite blades penetrate sheaves of alternating pyroxene-plagioclase intergrowth (figure 4). Phenocrystic olivine is overgrown (replaced?) with pyroxene. Pyroxene is sector zoned and also zone to high iron enrichment

Mineralogical Mode

Olivine	5
Pyroxene	47.2
Plagioclase	24.3
Opaques	19.6
Silica	2.9
Meostasis	0.7

(pyroxferroite?)(figure 3). Silica is found in the interstices.

The composition of armalcolite is given in table 2 and the composition of pyroxferroite(?) is given in table 3 (Warner et al. 1976).

Chemistry

Warner et al. (1975) determined the chemical composition of 77516 (table 1, figures 5 and 6).

Radiogenic age dating

Paces et al. (1991) studied the Rb-Sr and Sm-Nd isotopes for “whole-rock” samples of 77516 and classify it as a Type B2 Apollo 17 basalt because the Sr and Nd isotopes do not fall on the whole-rock isochron defined by other Apollo 17 basalts. Generally, Apollo 17 basalts are all thought to be 3.73 b.y. old.

Processing

There are 4 thin sections.

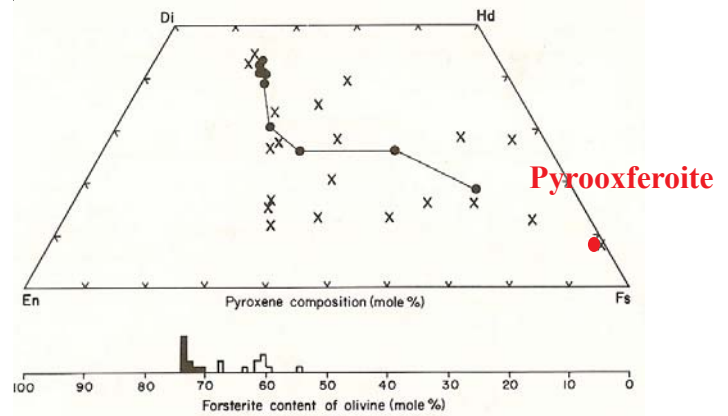


Figure 3: Pyroxene and olivine composition in 77516 (Warner et al. 1978).

Table 2: Armalcolite 77516.

(Warner et al. 1976)

TiO ₂	71	71	71.4	70.9
Al ₂ O ₃	1.95	1.95	1.95	1.95
Cr ₂ O ₃	1.37	1.68	1.48	1.47
V ₂ O ₃	0.33	0.26	0.28	0.37
FeO	15.6	16.2	16.9	17.1
MgO	6.9	6.7	6.1	6.4
CaO	0.31	0.27	0.27	0.19
ZrO ₂	0.08	0.12	0.08	0.08

Table 3: Pyroxferroite in 77516.

(Warner et al. 1976)

SiO ₂	45
TiO ₂	1.16
Al ₂ O ₃	2.05
Cr ₂ O ₃	0.04
FeO	48
MgO	0.27
CaO	3.3

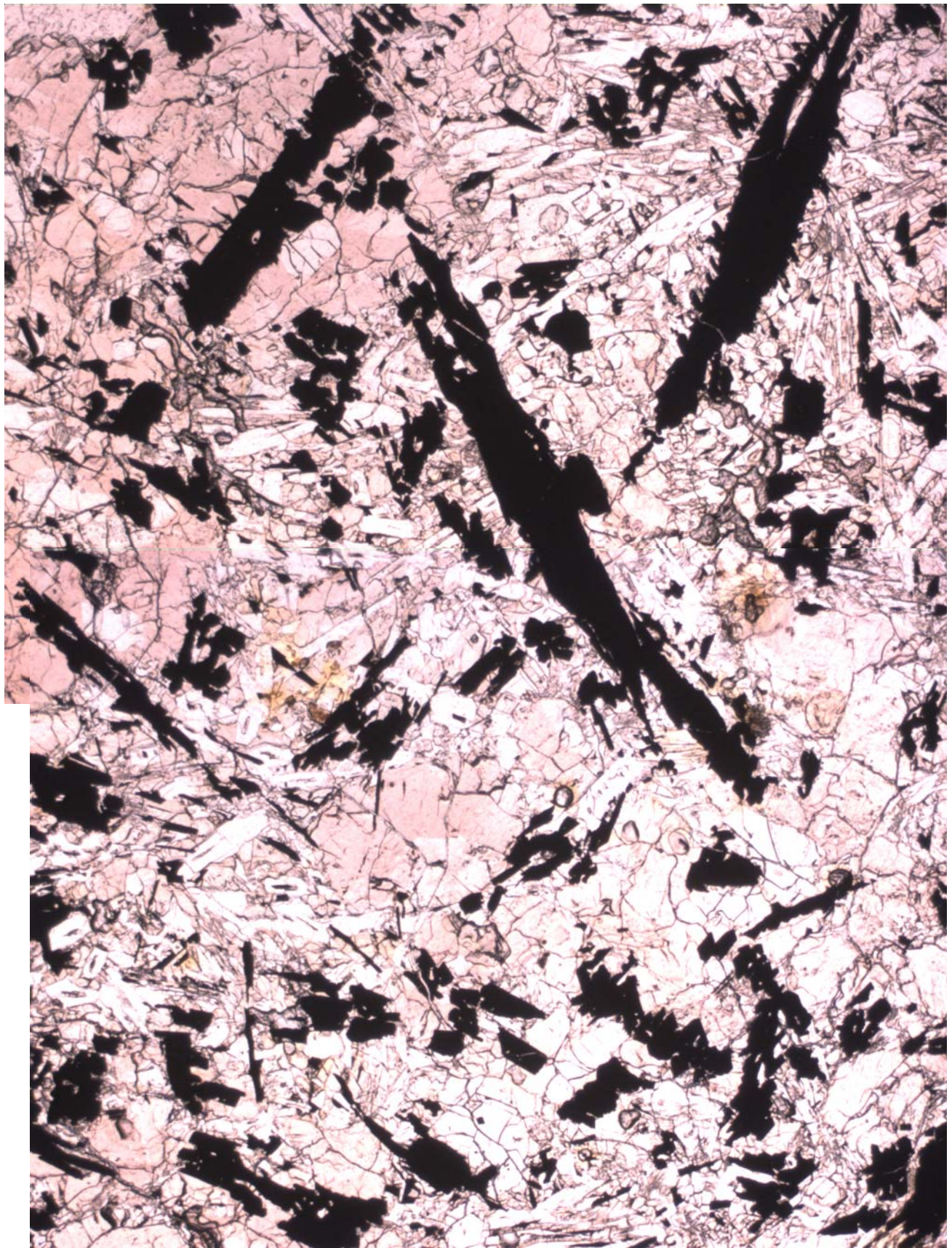


Figure 4a: Photomicrograph of thin section 77516,11. 2.8 mm across

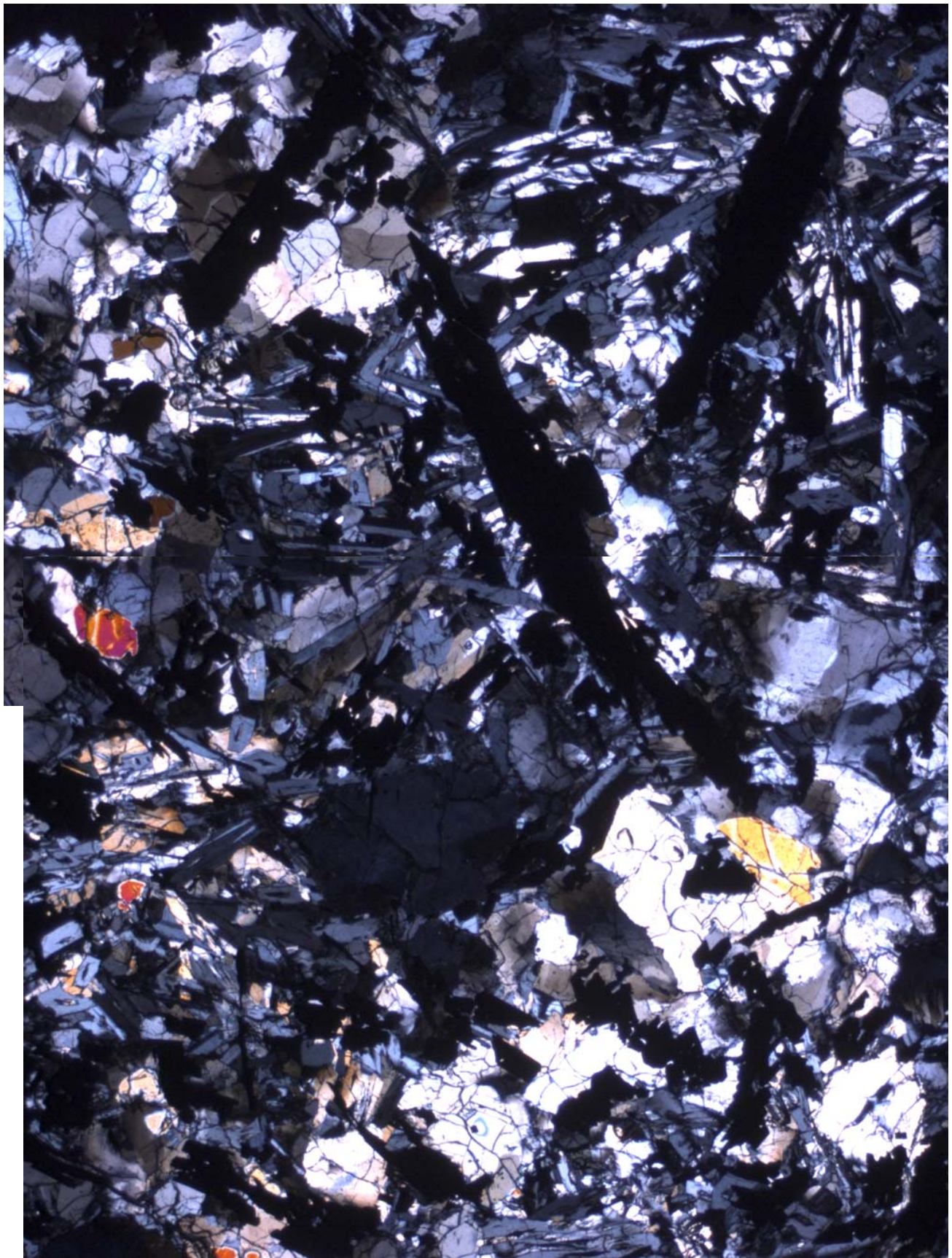


Figure 4b: Photomicrograph of thin section 77516,11. Crossed Nicols. 2.8 mm across

Table 1. Chemical composition of 77516.

reference weight	Warner75	Paces91
SiO ₂ %		
TiO ₂	13.7	(a)
Al ₂ O ₃	7.8	(a)
FeO	20.2	(a)
MnO	0.245	(a)
MgO	9.4	(a)
CaO	9.4	(a)
Na ₂ O	0.33	(a)
K ₂ O	0.04	(a)
P ₂ O ₅		
S %		
sum		
Sc ppm	80	(a)
V	120	(a)
Cr		(a)
Co	24.6	(a)
Ni		
Cu		
Zn		
Ga		
Ge ppb		
As		
Se		
Rb		0.34 (b)
Sr		110 (b)
Y		
Zr		
Nb		
Mo		
Ru		
Rh		
Pd ppb		
Ag ppb		
Cd ppb		
In ppb		
Sn ppb		
Sb ppb		
Te ppb		
Cs ppm		
Ba		
La	4.7	(a)
Ce	18	(a)
Pr		
Nd	18	(a) 15.2 (b)
Sm	6	(a) 6.39 (b)
Eu	1.25	(a)
Gd		
Tb	1.6	(a)
Dy	10	(a)
Ho		
Er		
Tm		
Yb	6	(a)
Lu	0.91	(a)
Hf	6.2	(a)
Ta	1.4	(a)
W ppb		
Re ppb		
Os ppb		
Ir ppb		
Pt ppb		
Au ppb		
Th ppm		
U ppm		

technique: (a) INAA, (b) IDMS

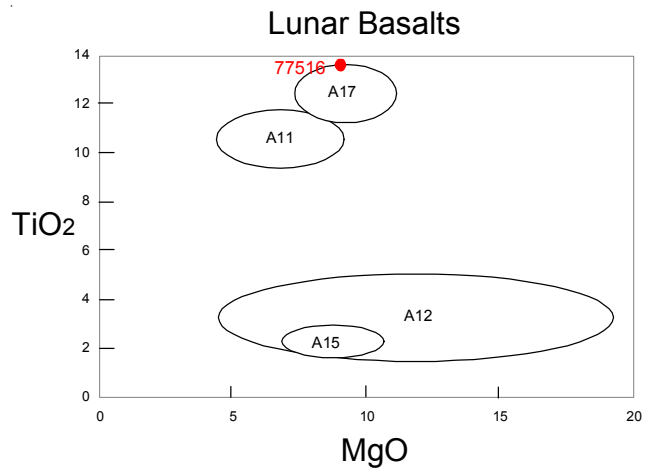


Figure 5: Composition of lunar basalts.

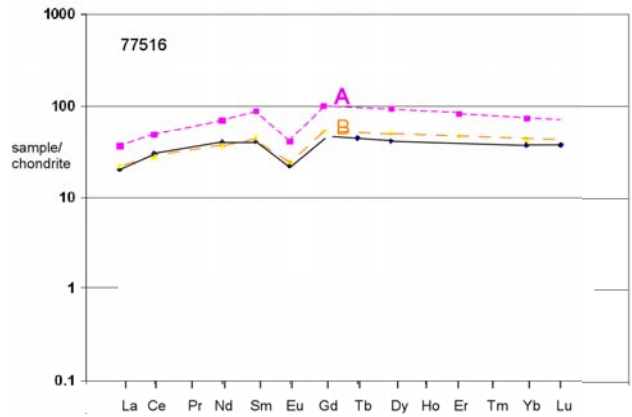
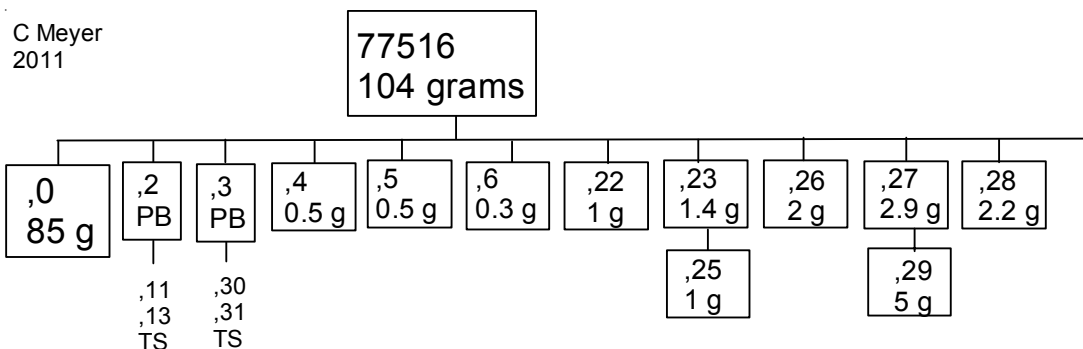


Figure 6: Normalized rare-earth-element diagram for 77516 compared with A and B types of Apollo 17 basalt.



References for 77516

Brown G.M., Peckett A., Emeleus C.H., Phillips R. and Pinsent R.H. (1975a) Petrology and mineralogy of Apollo 17 mare basalts. *Proc. 6th Lunar Sci. Conf.* 1-13.

Butler P. (1973) **Lunar Sample Information Catalog Apollo 17.** Lunar Receiving Laboratory. MSC 03211 Curator's Catalog. pp. 447.

LSPET (1973) Apollo 17 lunar samples: Chemical and petrographic description. *Science* **182**, 659-672.

LSPET (1973) Preliminary Examination of lunar samples. Apollo 17 Preliminary Science Rpt. NASA SP-330. 7-1 – 7-46.

Meyer C. (1994) Catalog of Apollo 17 rocks. Vol. 4 North Massif

Muehlberger et al. (1973) Documentation and environment of the Apollo 17 samples: A preliminary report. *Astrogeology* 71 322 pp superceded by *Astrogeology* 73 (1975) and by Wolfe et al. (1981)

Muehlberger W.R. and many others (1973) Preliminary Geological Investigation of the Apollo 17 Landing Site. *In Apollo 17 Preliminary Science Report.* NASA SP-330.

Paces J.B., Nakai S., Neal C.R., Taylor L.A., Halliday A.N. and Lee D.-C. (1991) A strontium and neodymium isotopic study of Apollo 17 high-Ti mare basalts: Resolution of ages, evolution of magmas, and origin of source heterogeneities. *Geochim. Cosmochim. Acta* **55**, 2025-2043.

Warner R.D., Keil K., Prinz M., Laul J.C., Murali A.V. and Schmitt R.A. (1975b) Mineralogy, petrology, and chemistry of mare basalts from Apollo 17 rake samples. *Proc. 6th Lunar Sci. Conf.* 193-220.

Warner R.D., Warren R.G., Mansker W.L., Berkley J.L. and Keil K. (1976a) Electron microprobe analyses of olivine, pyroxene and plagioclase from Apollo 17 rake sample mare basalts. Spec. Publ. # 15, UNM Institute of Meteoritics, Albuquerque. 158 pp.

Warner R.D., Berkley J.L., Mansker W.L., Warren R.G. and Keil K. (1976b) Electron microprobe analyses of spinel, Fe-Ti oxides and metal from Apollo 17 rake sample mare basalts. Spec. Publ. #16, UNM Institute of Meteoritics, Albuquerque. 114 pp.

Warner R.D., Keil K., Nehru C.E. and Taylor G.J. (1978) Catalogue of Apollo 17 rake samples from Stations 1a, 2, 7, and 8. Spec. Publ. #18, UNM Institute of Meteoritics, Albuquerque. 88 pp.

Warner R.D., Nehru C.E. and Keil K. (1978g) Opaque oxide mineral crystallization in lunar high-titanium basalts. *Am. Mineral.* **68**, 1209-1224.

Wolfe E.W., Bailey N.G., Lucchitta B.K., Muehlberger W.R., Scott D.H., Sutton R.L and Wilshire H.G. (1981) The geologic investigation of the Taurus-Littrow Valley: Apollo 17 Landing Site. US Geol. Survey Prof. Paper, 1080, pp. 280.