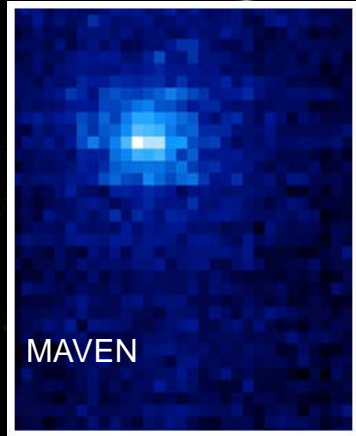


First Released Images of Comet Siding Spring from NASA's Mars and Space Assets

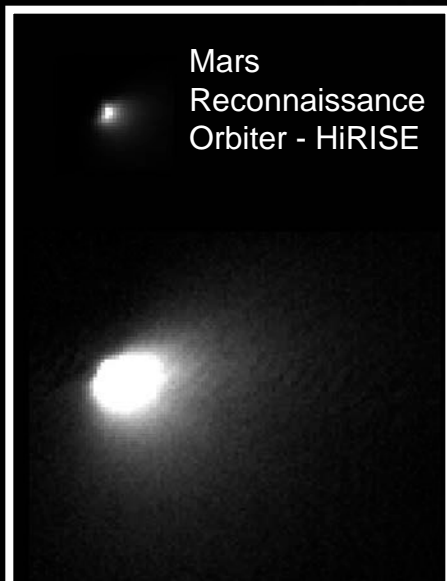


Comet C/2013 A1 Siding Spring made a close approach to Mars on October 19, 2014.

NASA Mars spacecraft took advantage of a unique and unexpected science opportunity for close study of a visitor from the edge of the solar system, along with possible effects on Mars' atmosphere.

Early results probe the size and properties of the comet's nucleus and the properties of dust and gas in the comet's coma. Comet material also blanketed most of the northern hemisphere of Mars.

NASA space observatories that orbit the Earth also observed the comet and Mars during the close encounter.



Hubble Space Telescope composite image

