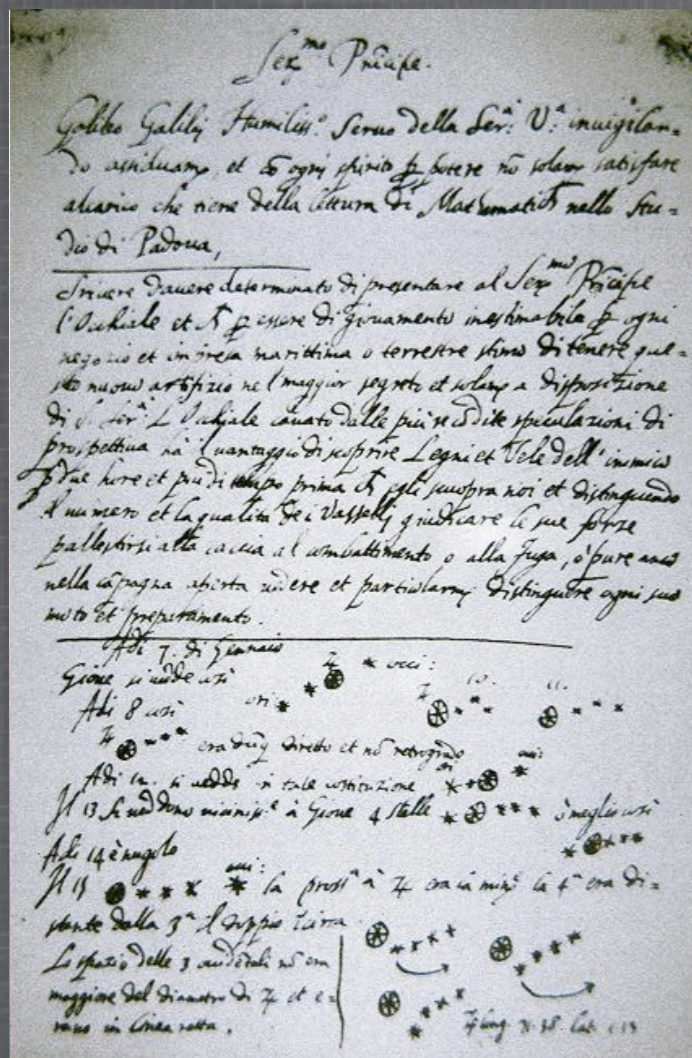
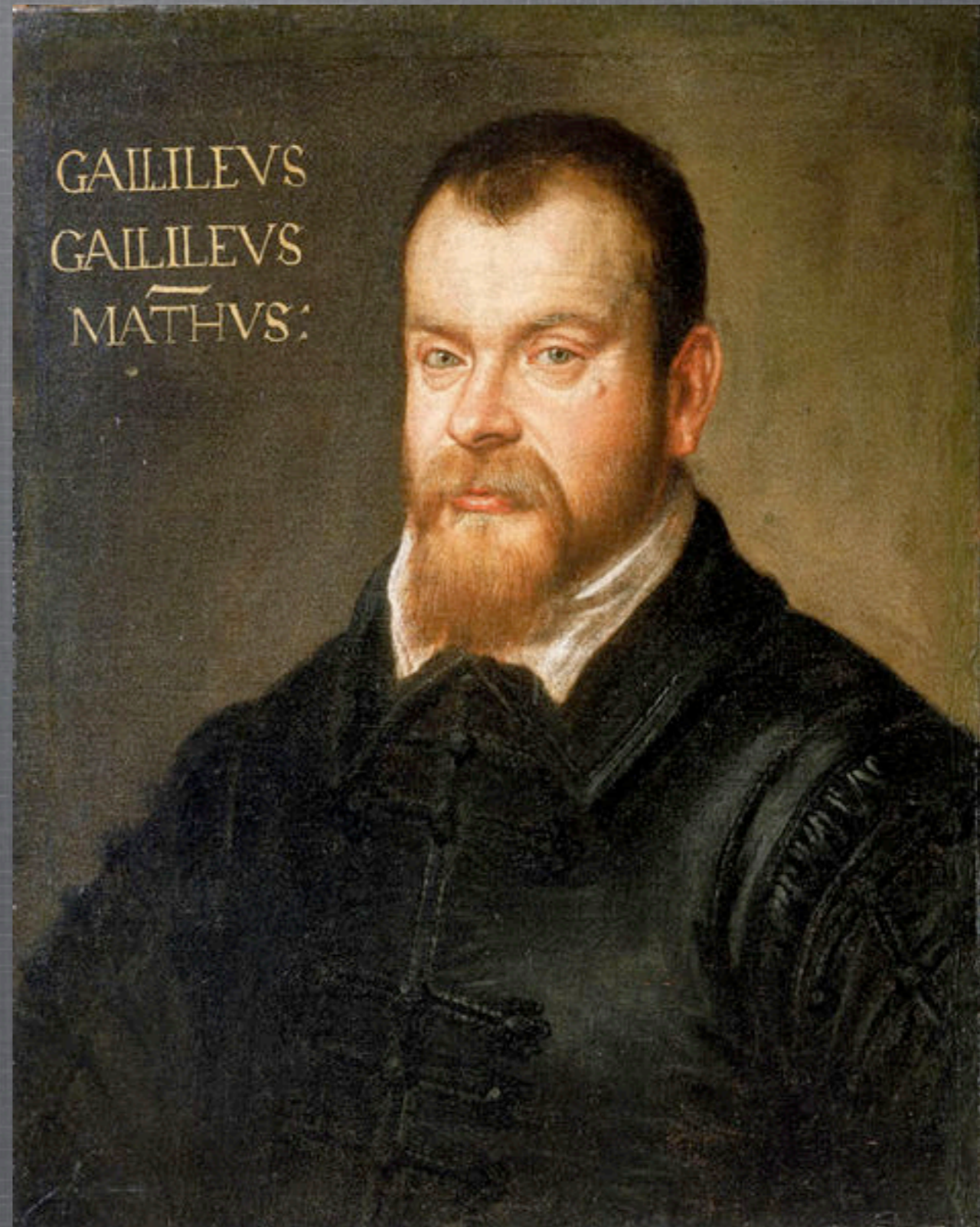
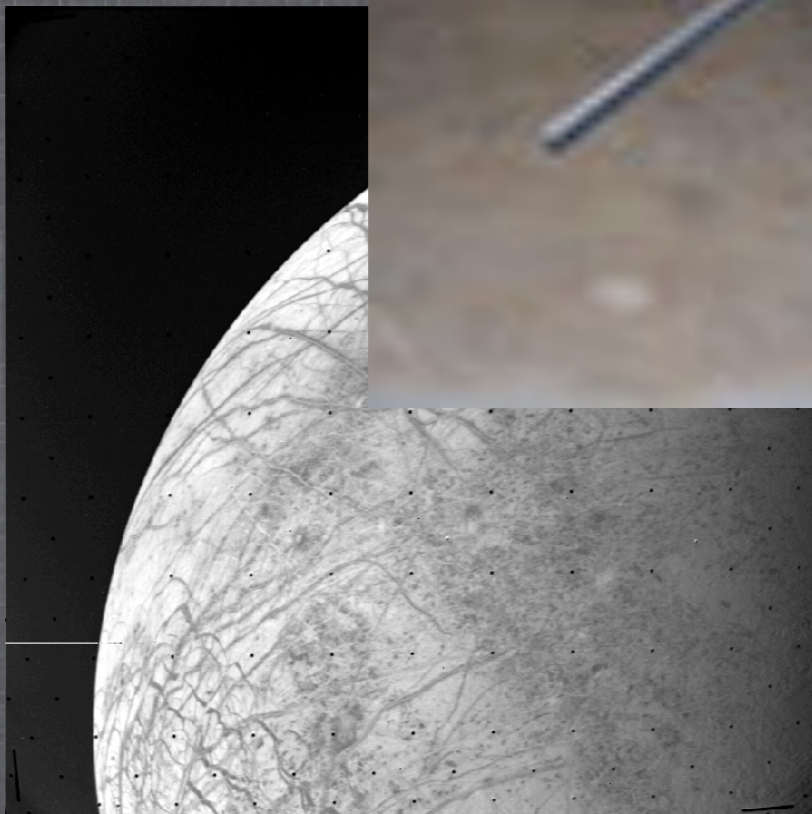
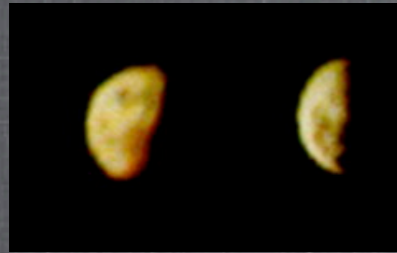
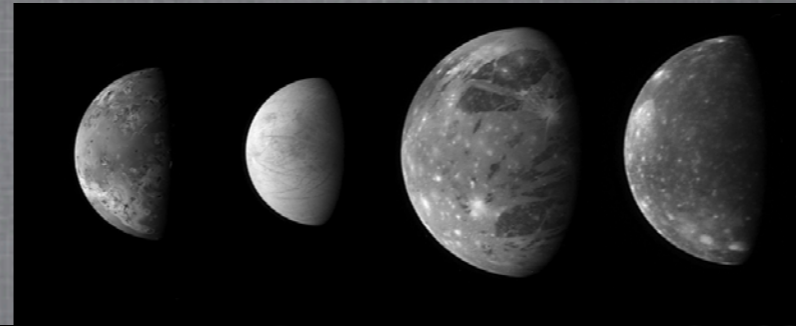


When Galileo became the first human to recognize the 4 large satellites of Jupiter, he could not have imagined the true nature of the worlds he had discovered

- 7 January 1610 -



It fell to others to map these new worlds, including a partially blinded mechanical namesake the giant years 387



and now, 400 years later, the first truly comprehensive Atlas of these bodies will finally be available to Galileo's heirs ...

400 YEARS IN THE MAKING!

Atlas of the Galilean Satellites

by *Paul Schenk*

Cambridge Univ. Press

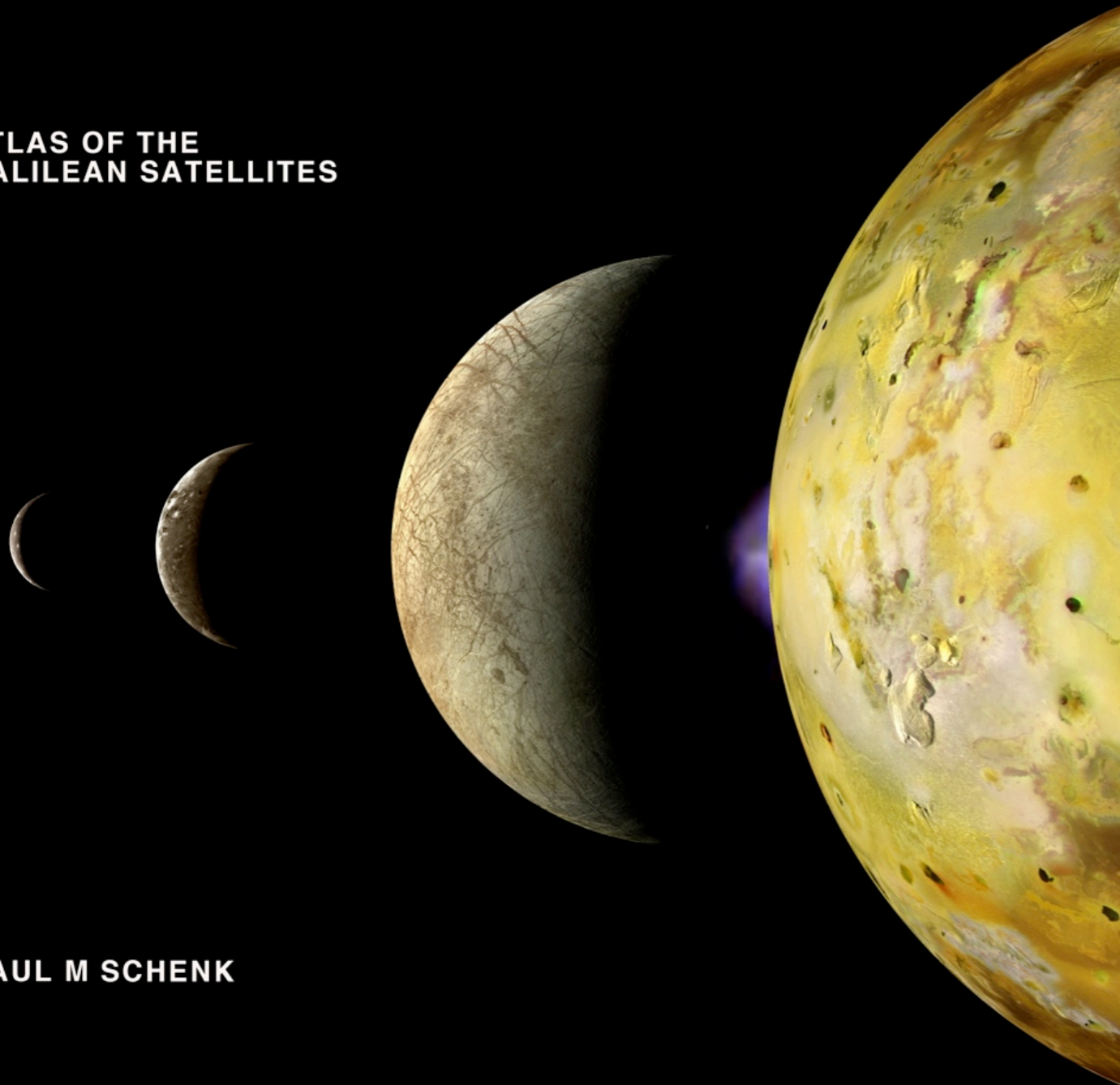
a comprehensive survey
& mapping tool for the
Galilean Satellites

available

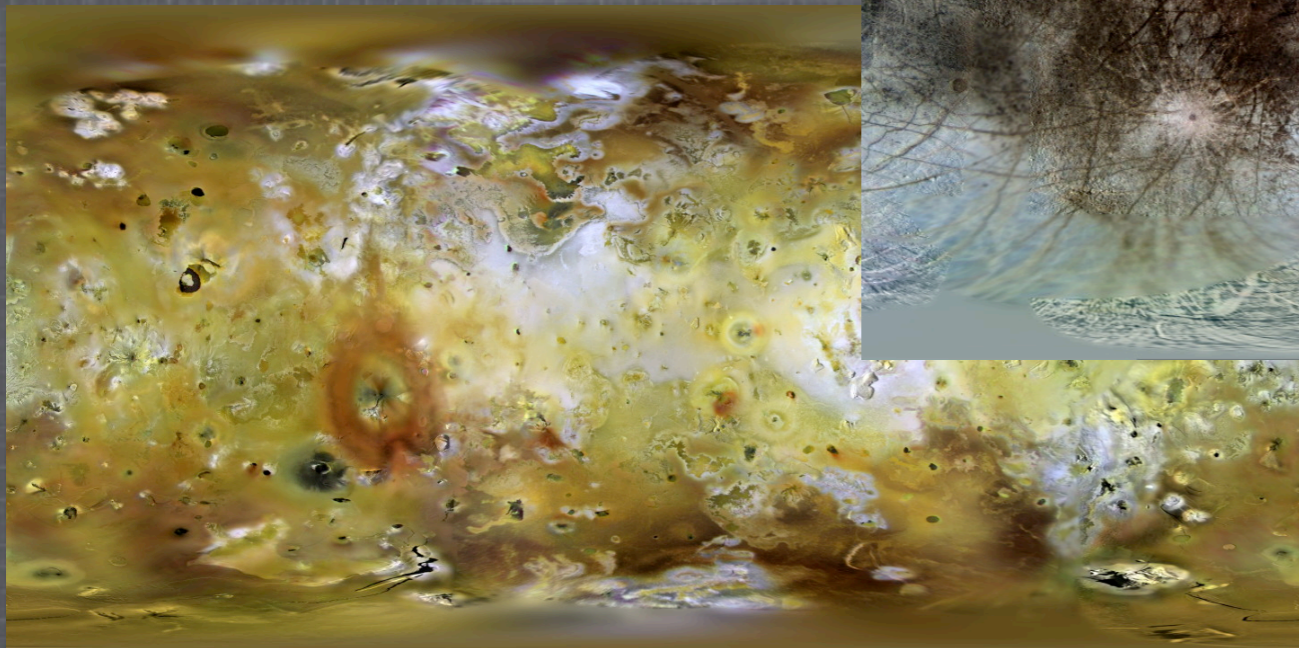
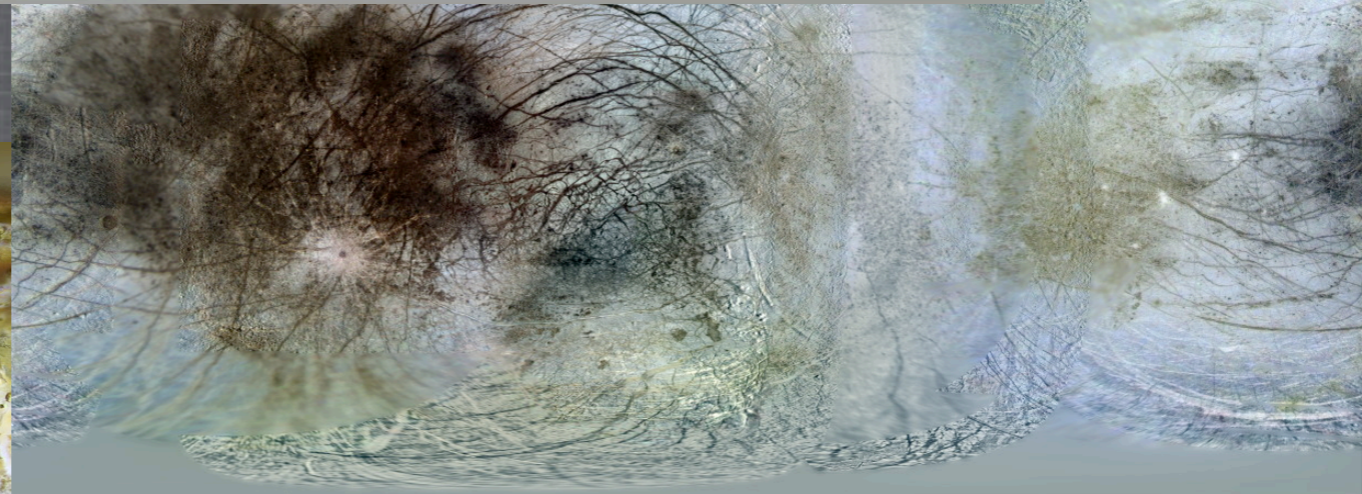
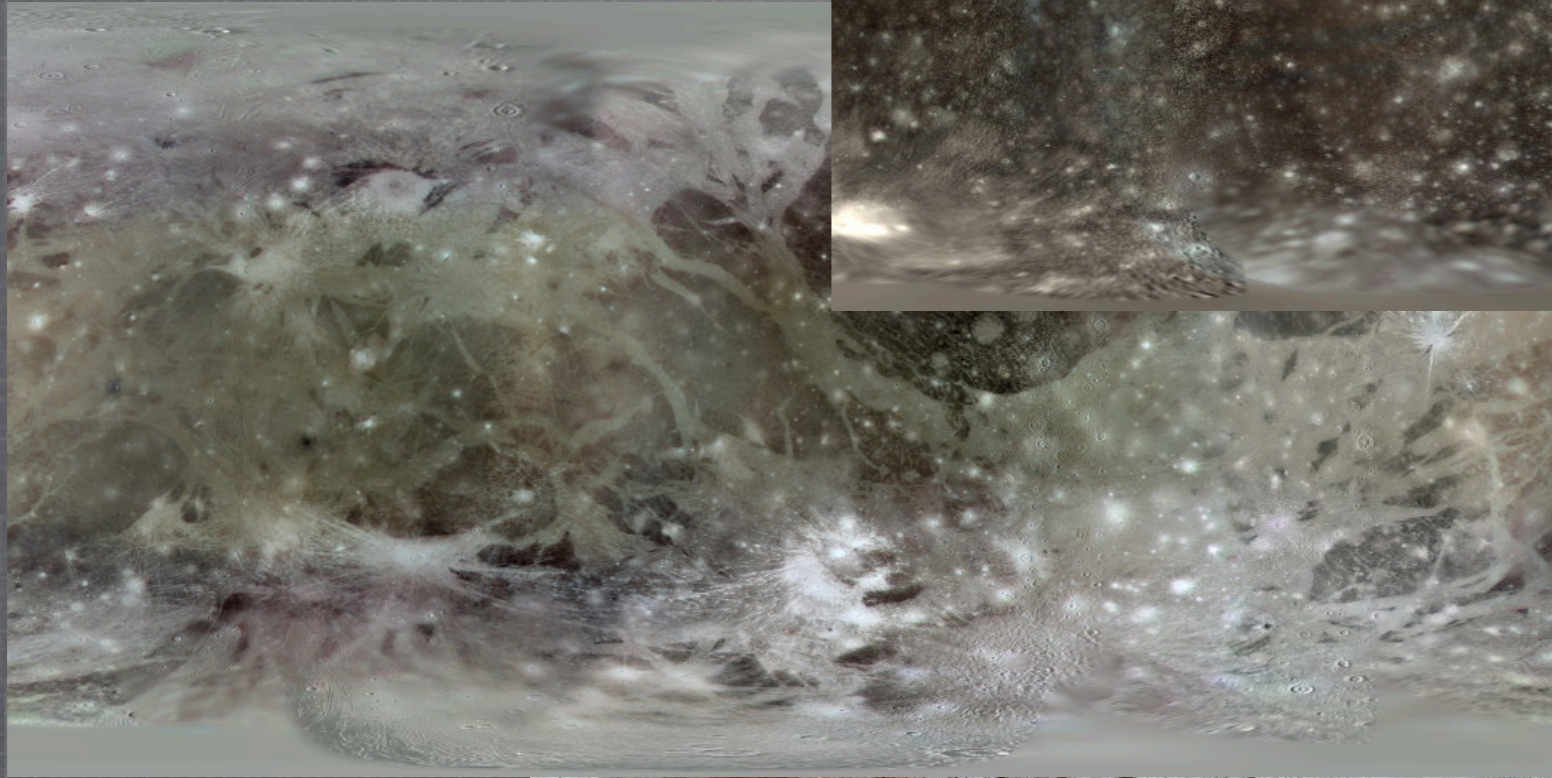
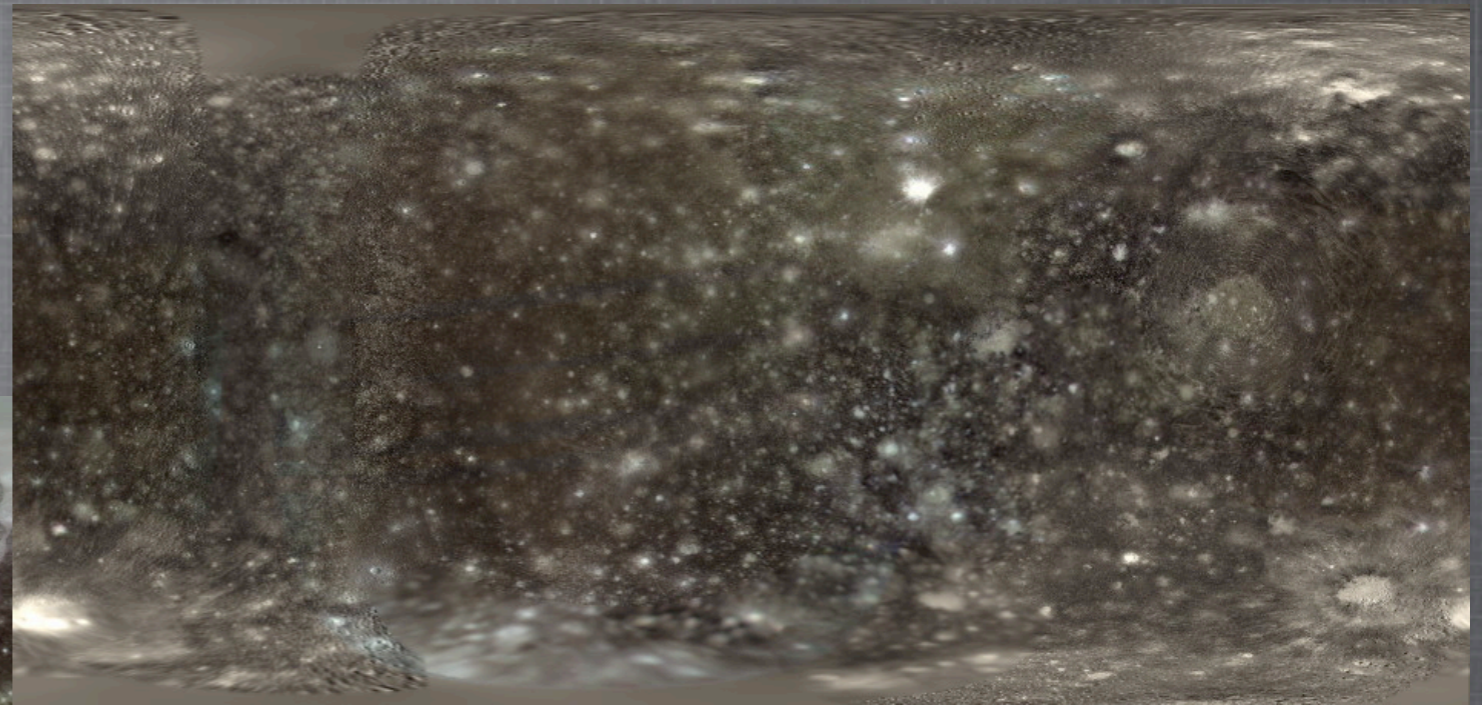
- Winter 2009 -

ATLAS OF THE
GALILEAN SATELLITES

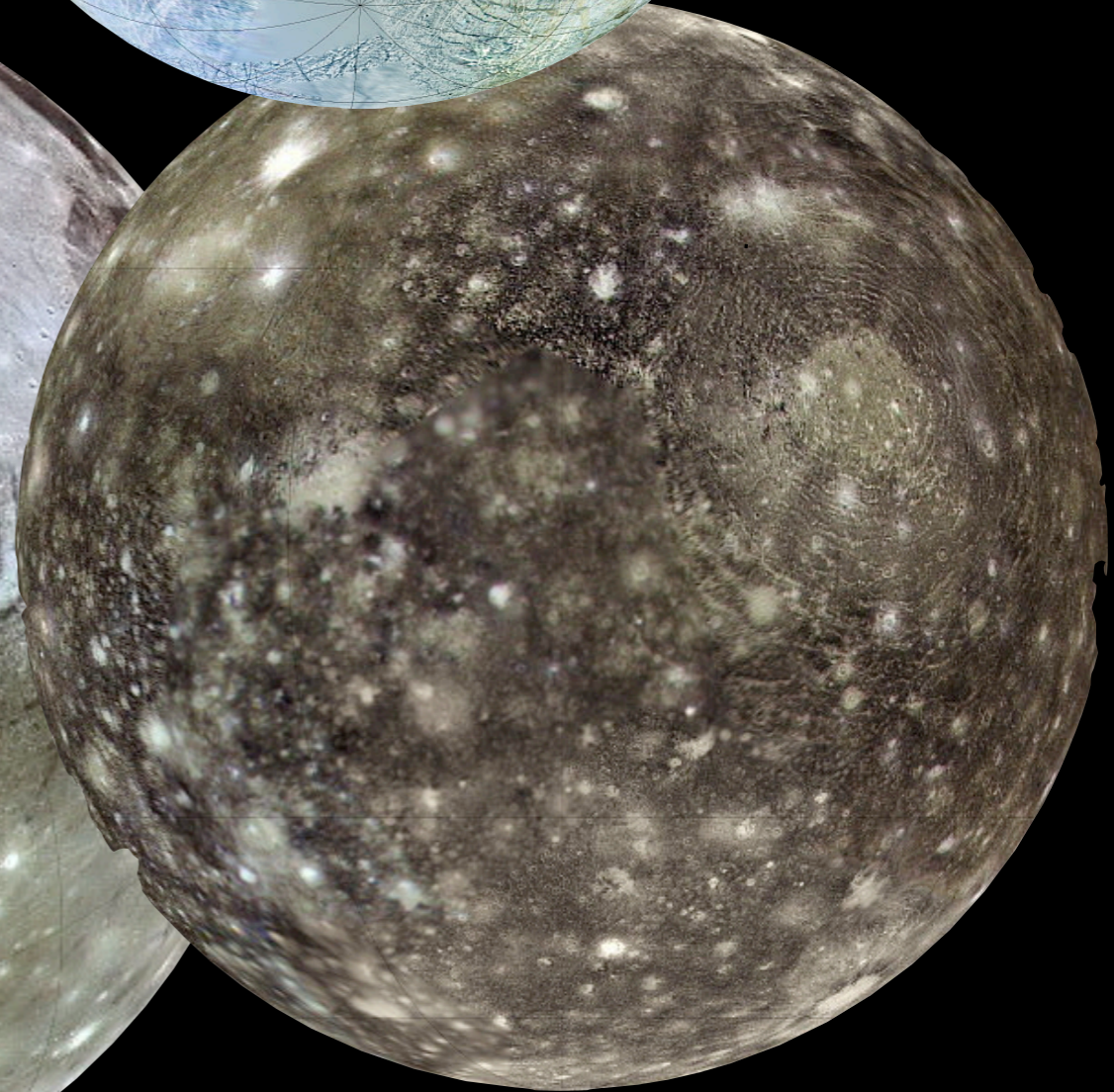
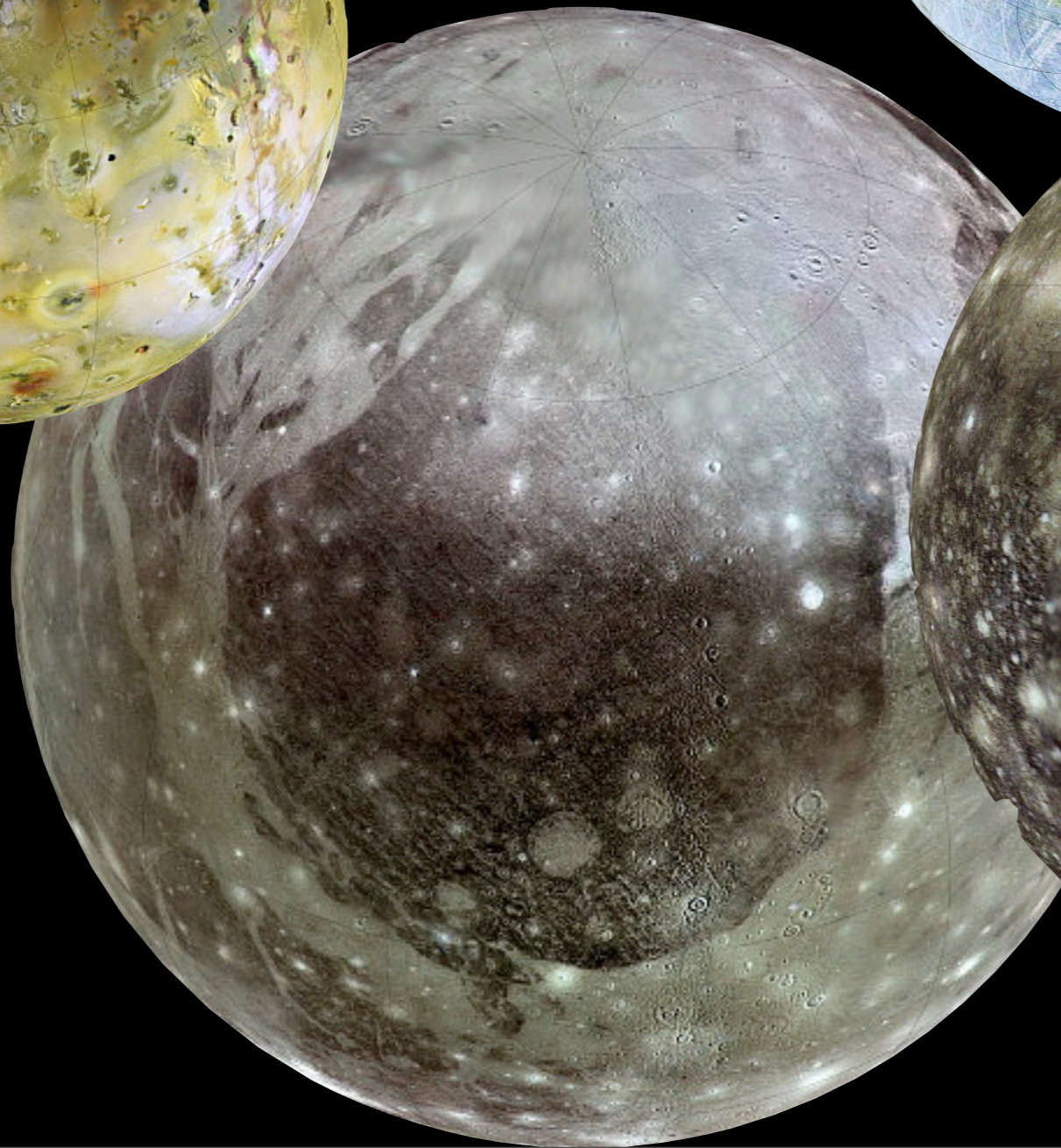
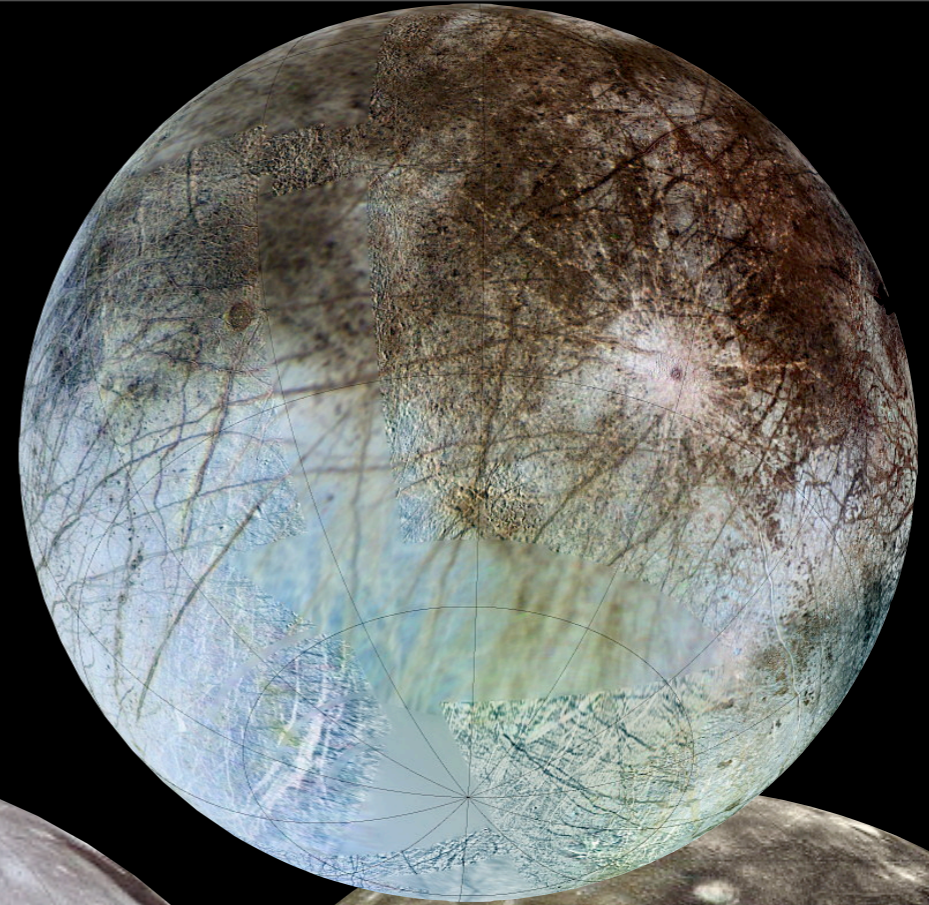
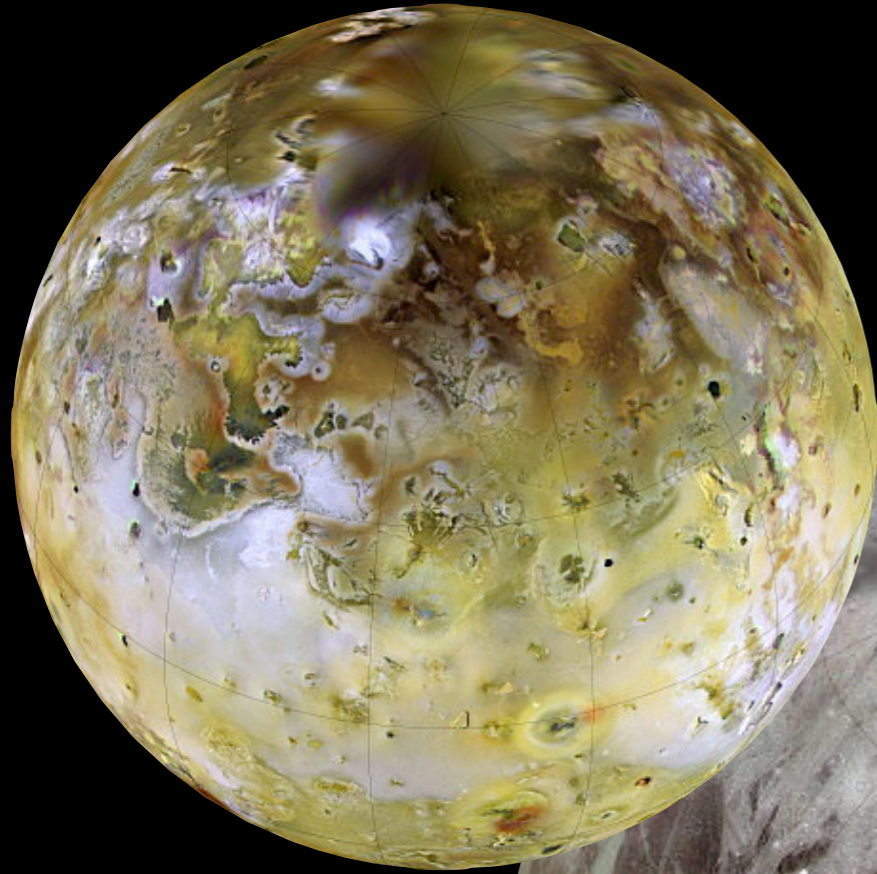
PAUL M SCHENK



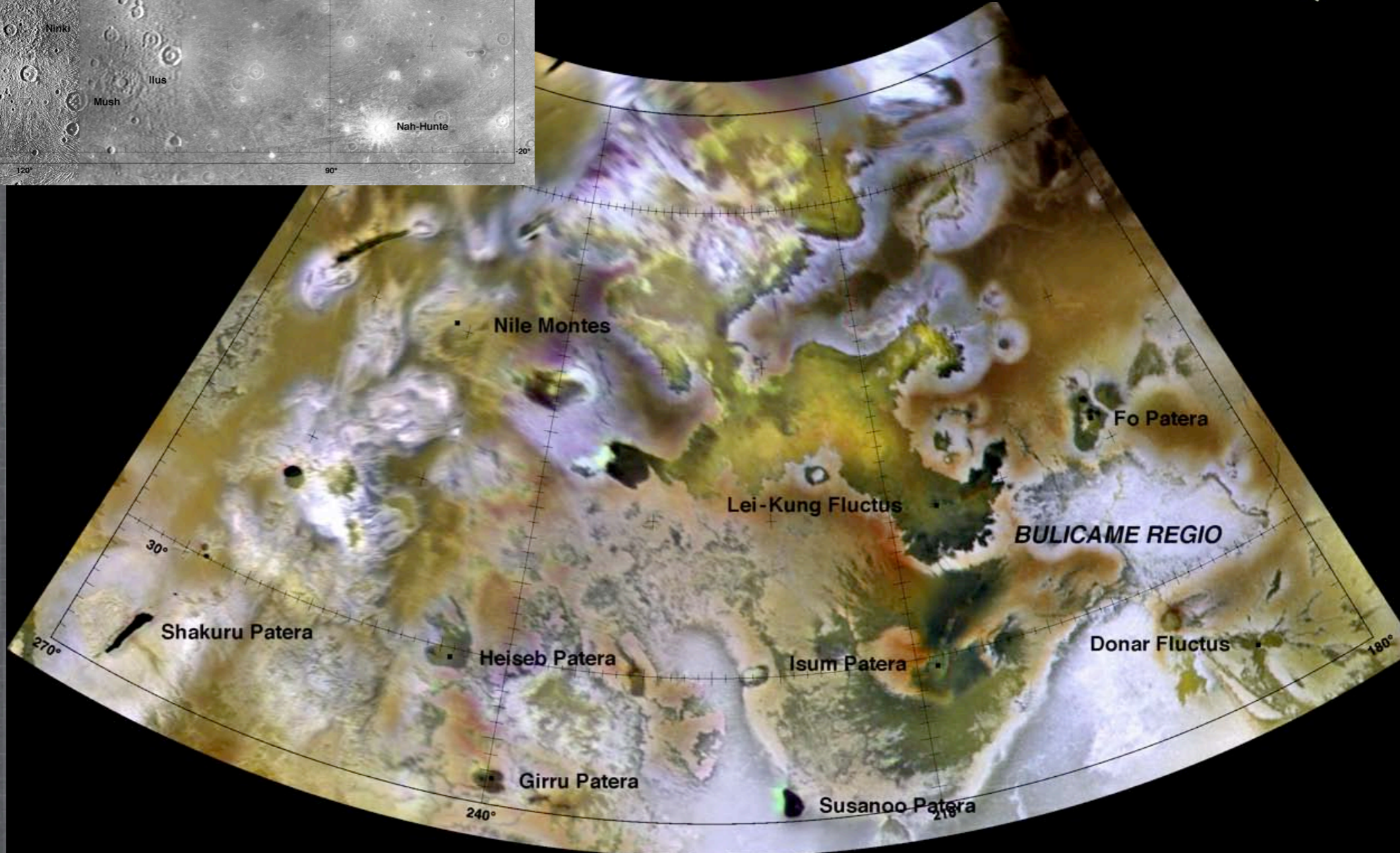
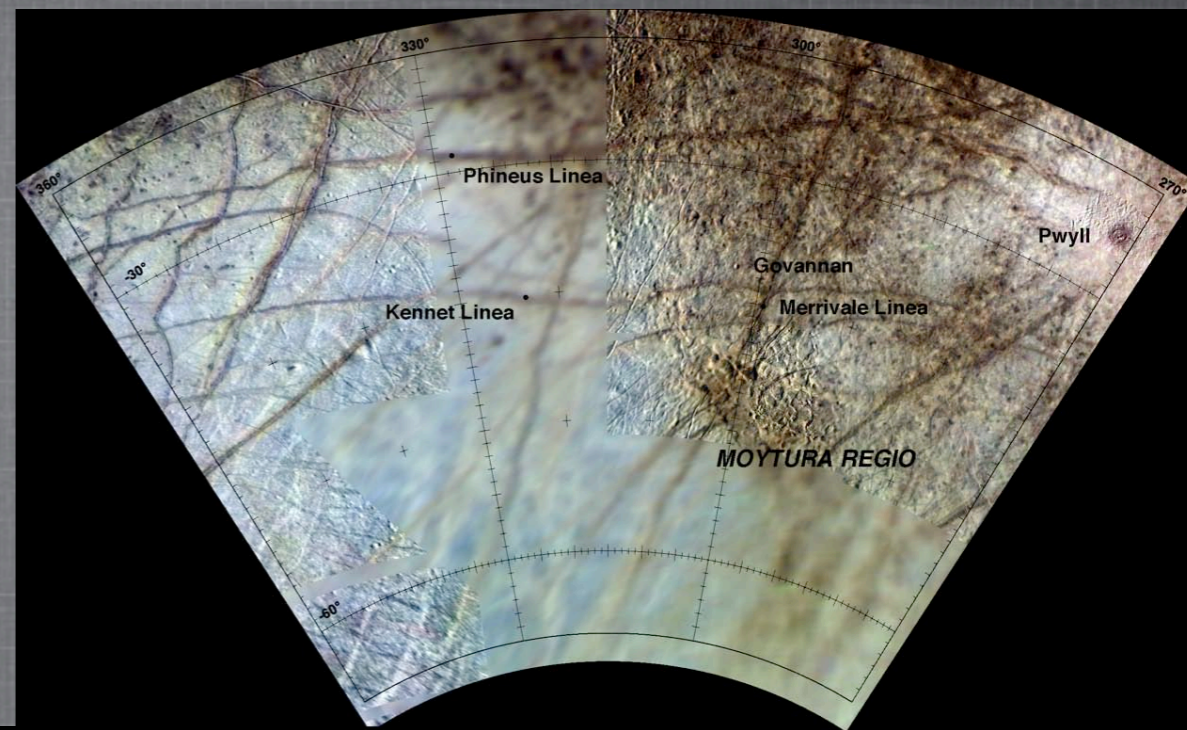
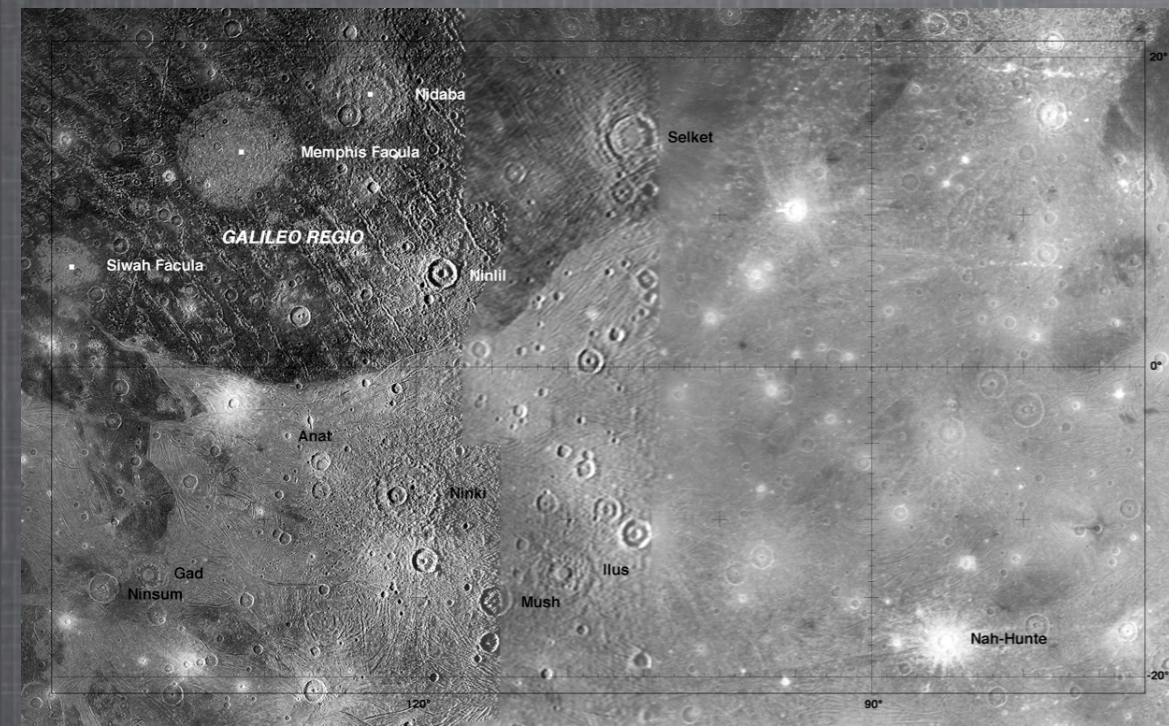
First Component:
Global base maps
@ 1-km resolution



First Component:
... & orthographic global views



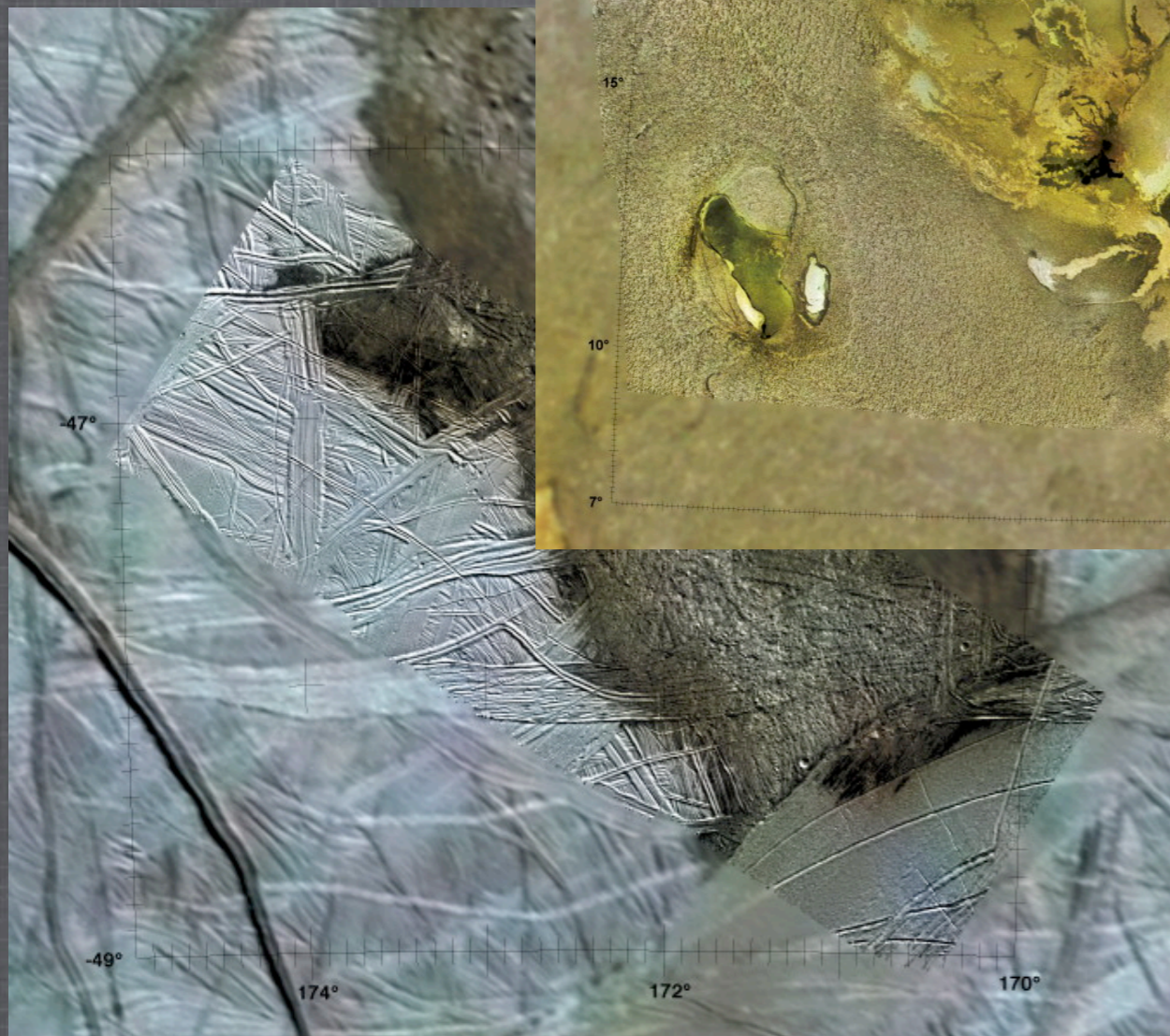
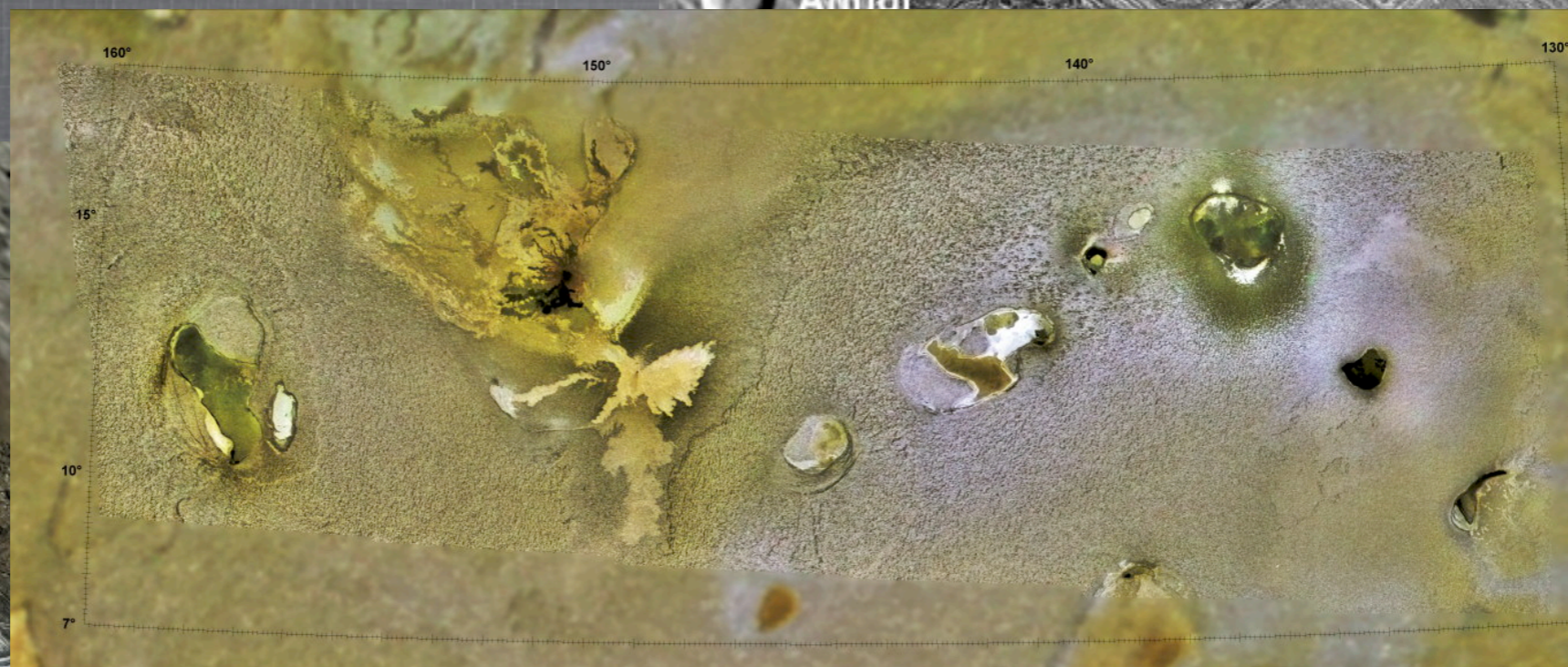
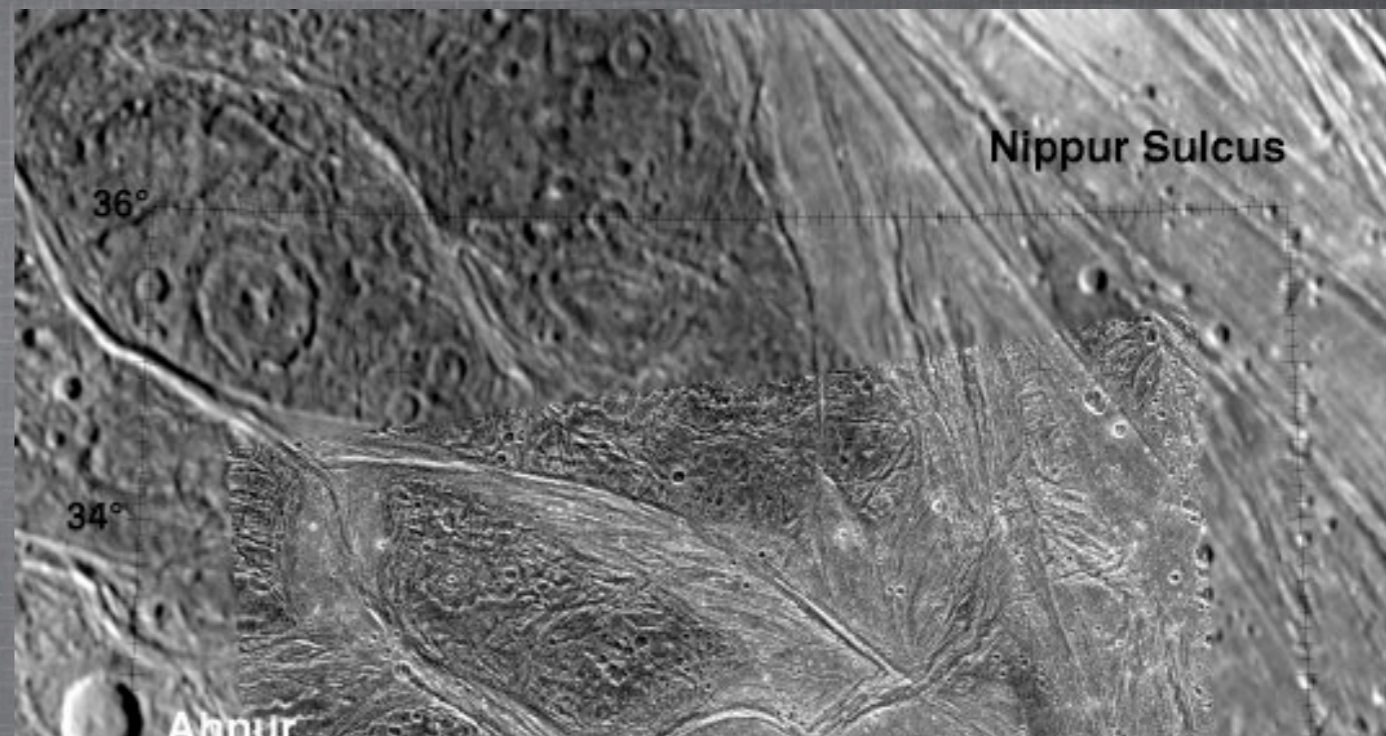
Second Component: 15 Quadrangles per satellite



Third Component:

All high-Res. Mosaics within each Quadrangle are included

- *all registered to global control network for the first time!*



Io High-resolution Mosaics:

- full color (mostly)
- NIMS hotspot maps (where available)

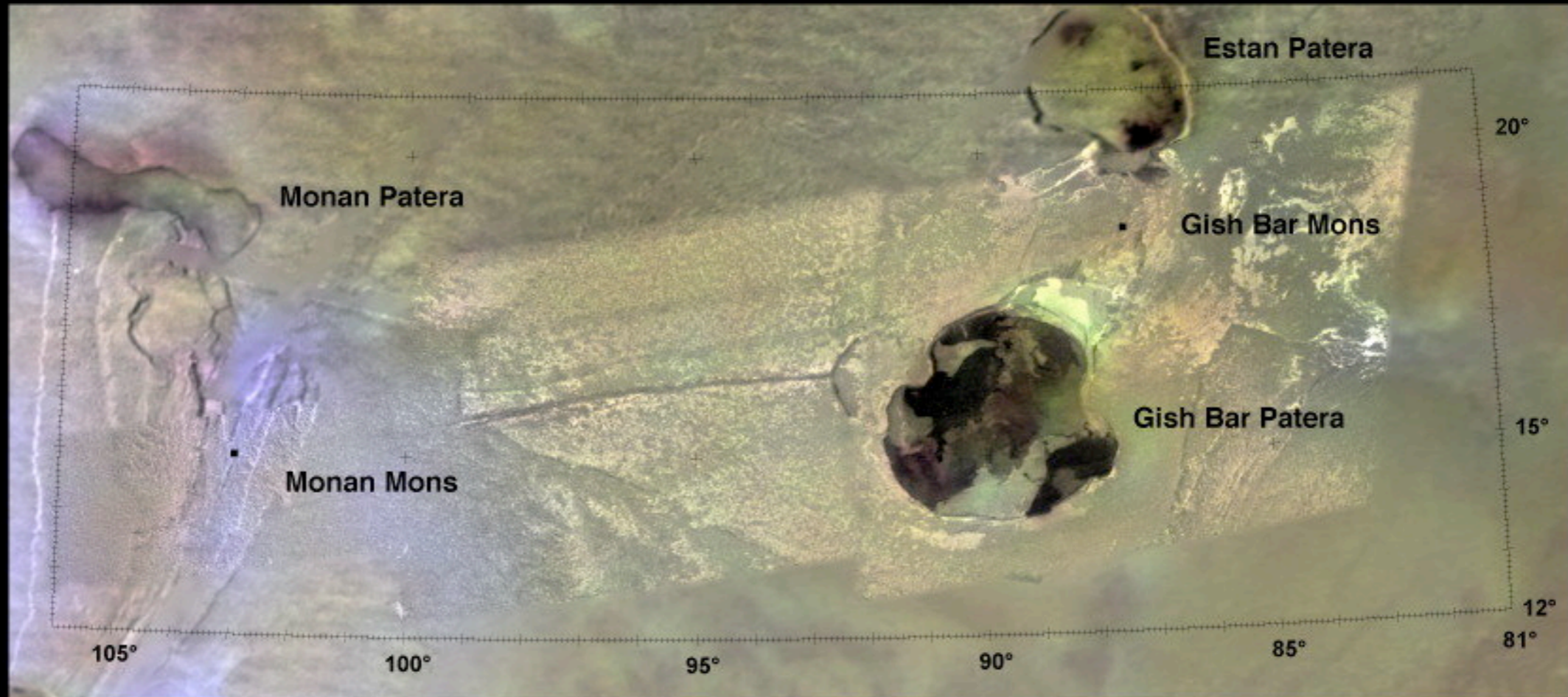
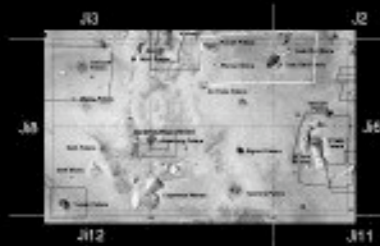
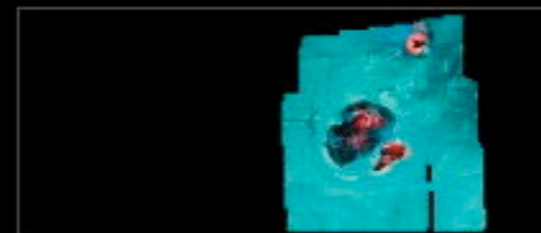


Plate Ji7.3.1 Gish-Bar Patera



0 100 km



NIMS Thermal Map

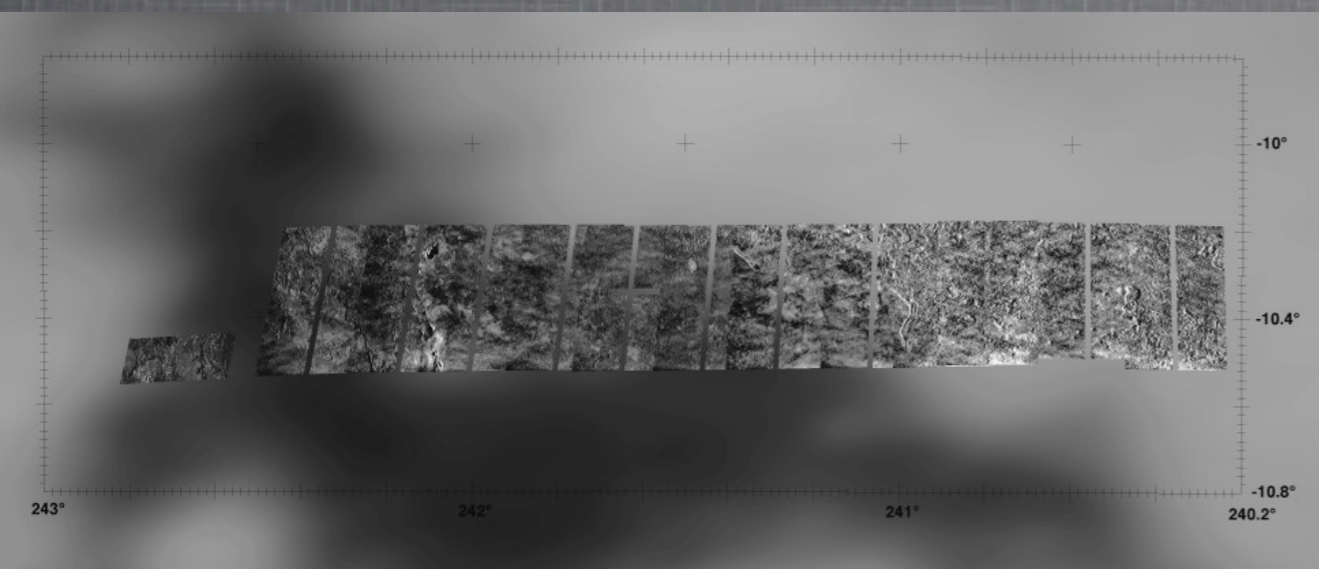
Encounter: I32 Resolution: 250 m/pixel
Map Scale: 1 inch = 39 km

Blah blah blah blah blahblah blahblahblah blah
blahblahblah blah blahblah blah blahblah blah

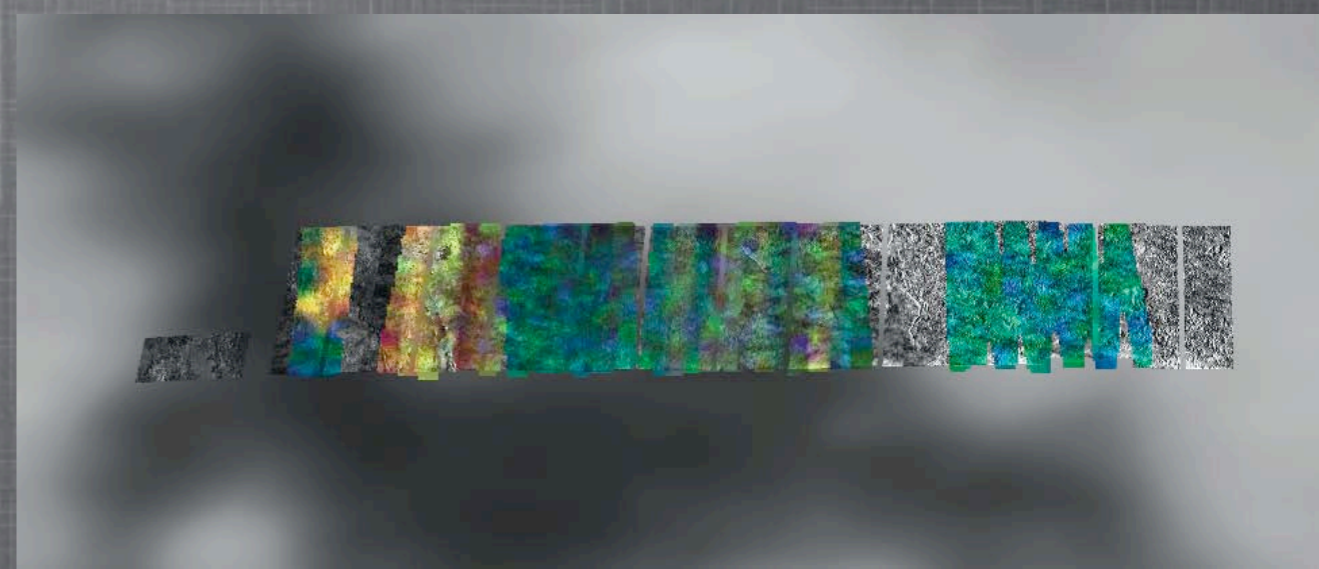
Io High-resolution Mosaics:

- change maps at active sites

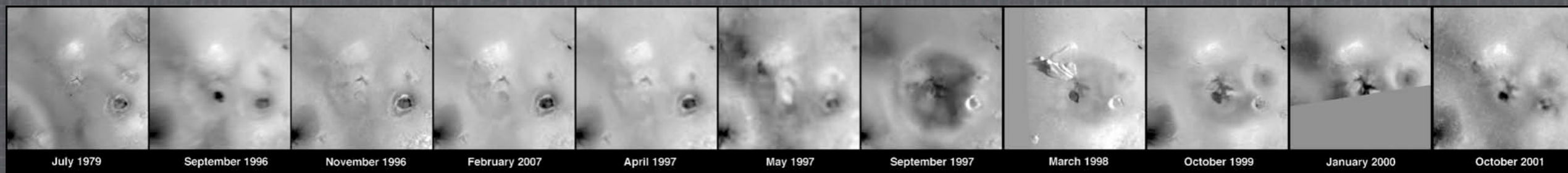
Pillan



SSI



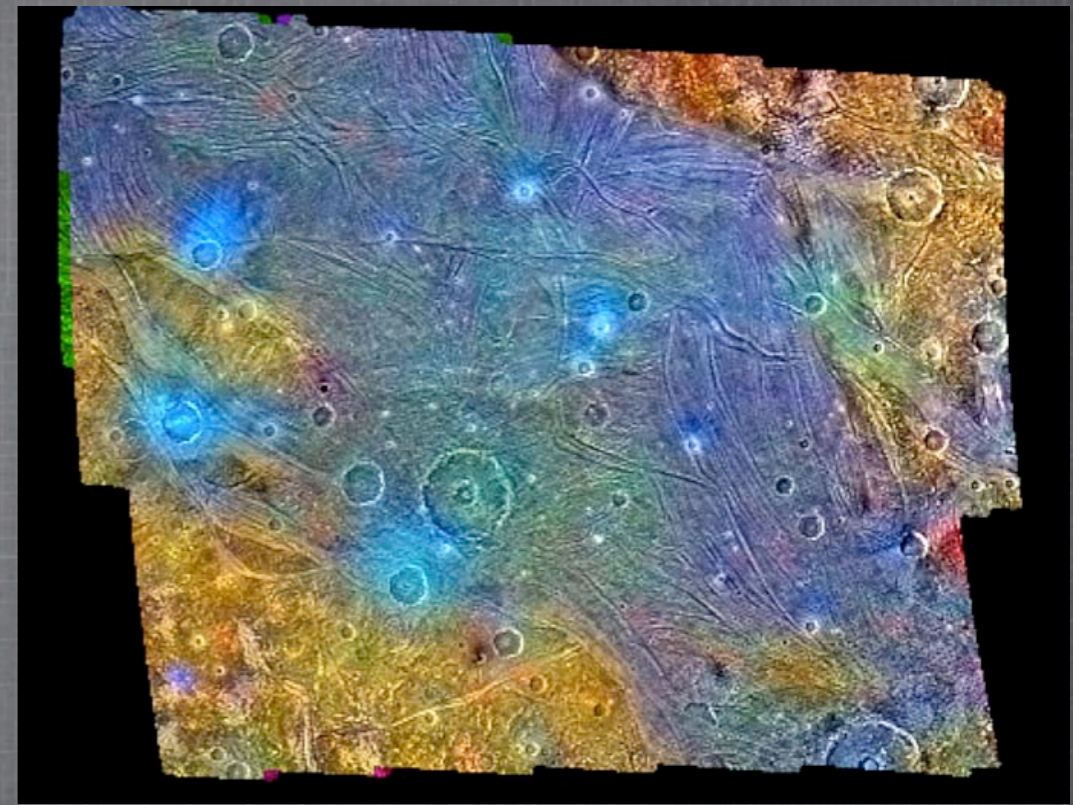
NIMS + SSI



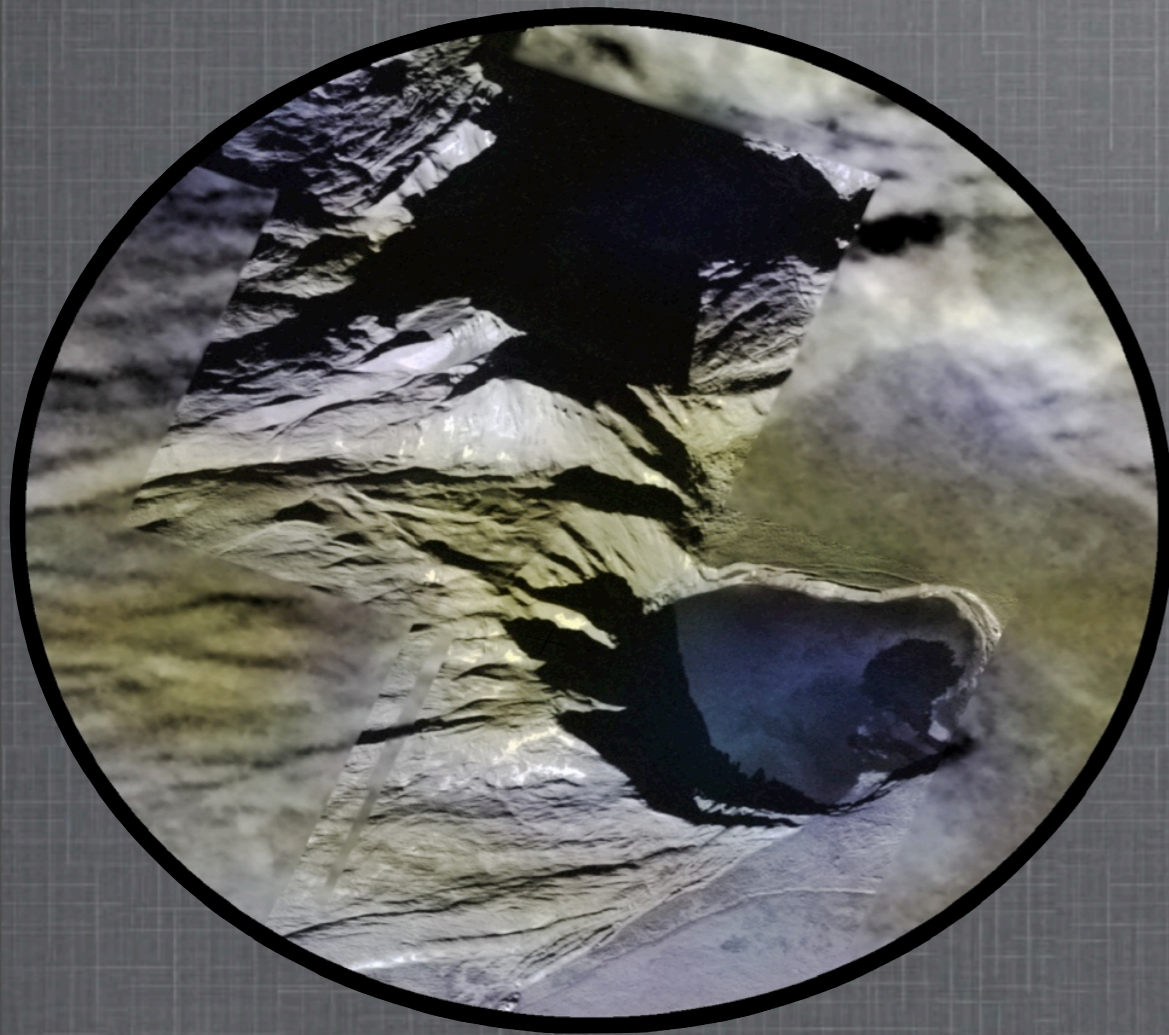
Time History

Fourth Component: Supplemental Material

- *buy now & get all these Extras ... FREE!*

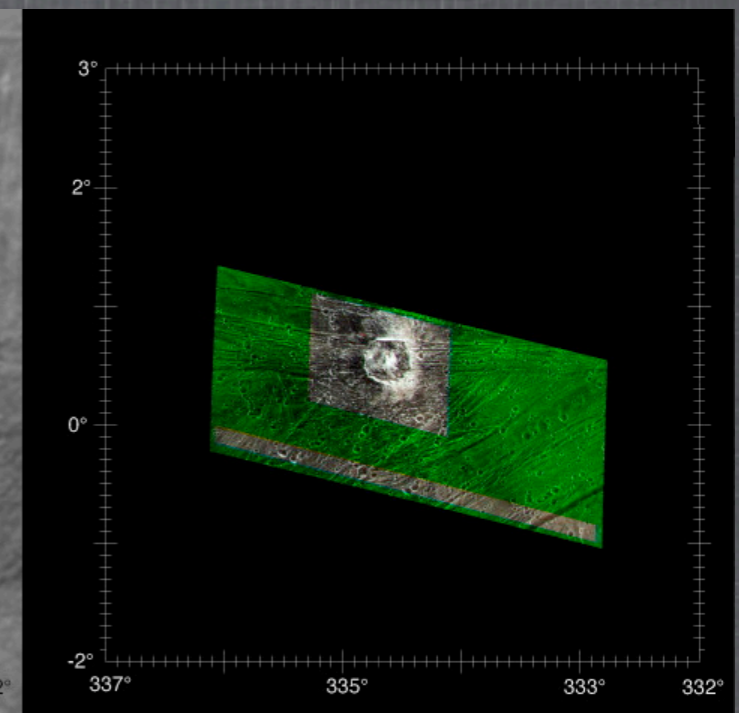
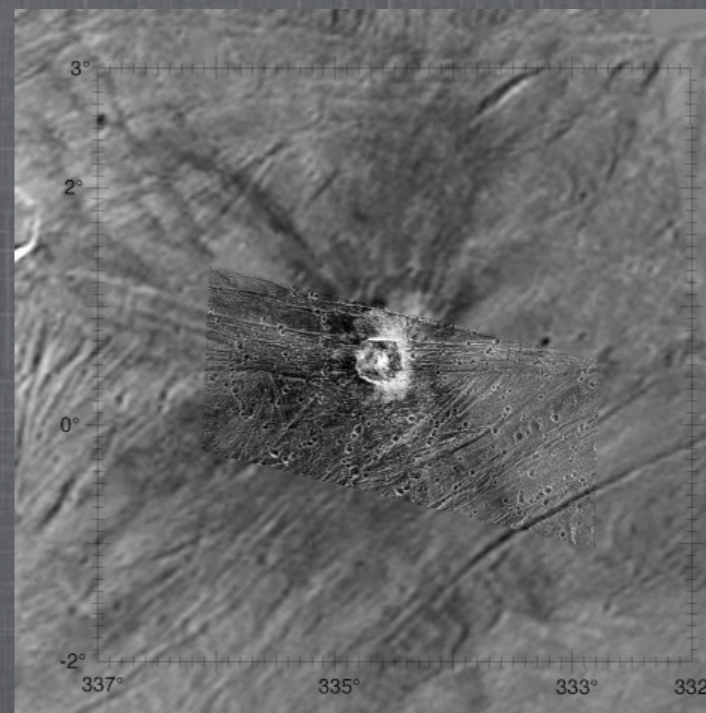


NIMS + SSI (for a few select sites)



Perspective views

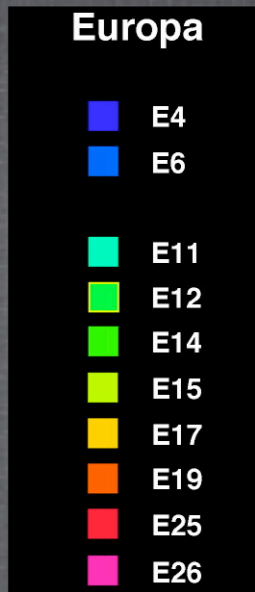
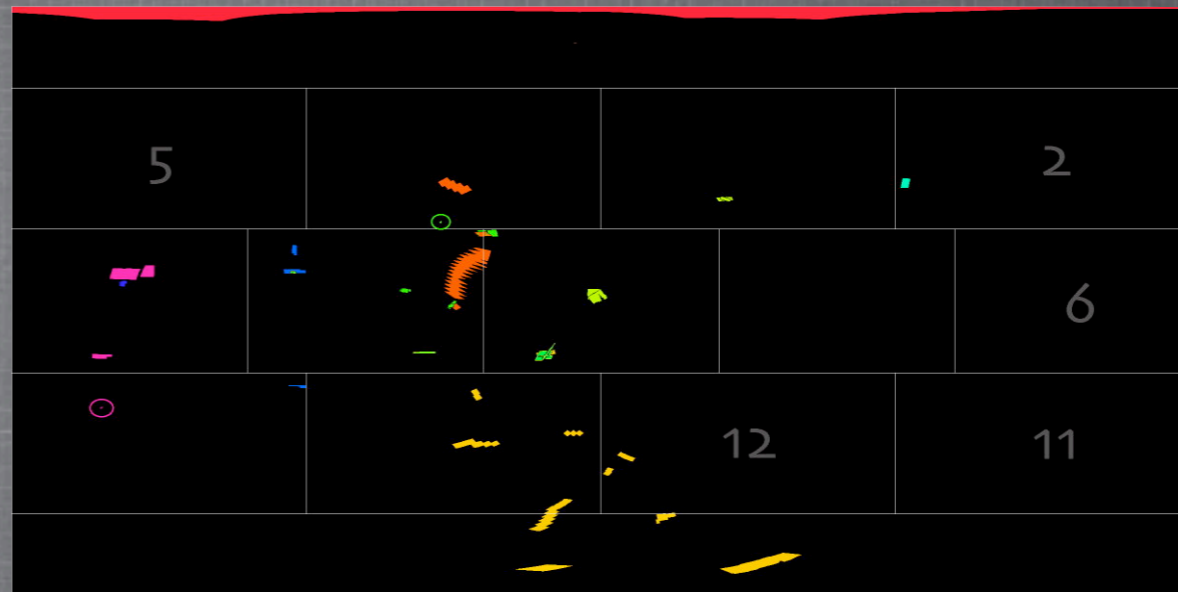
SSI high-resolution Color



Fifth Component: Appendices

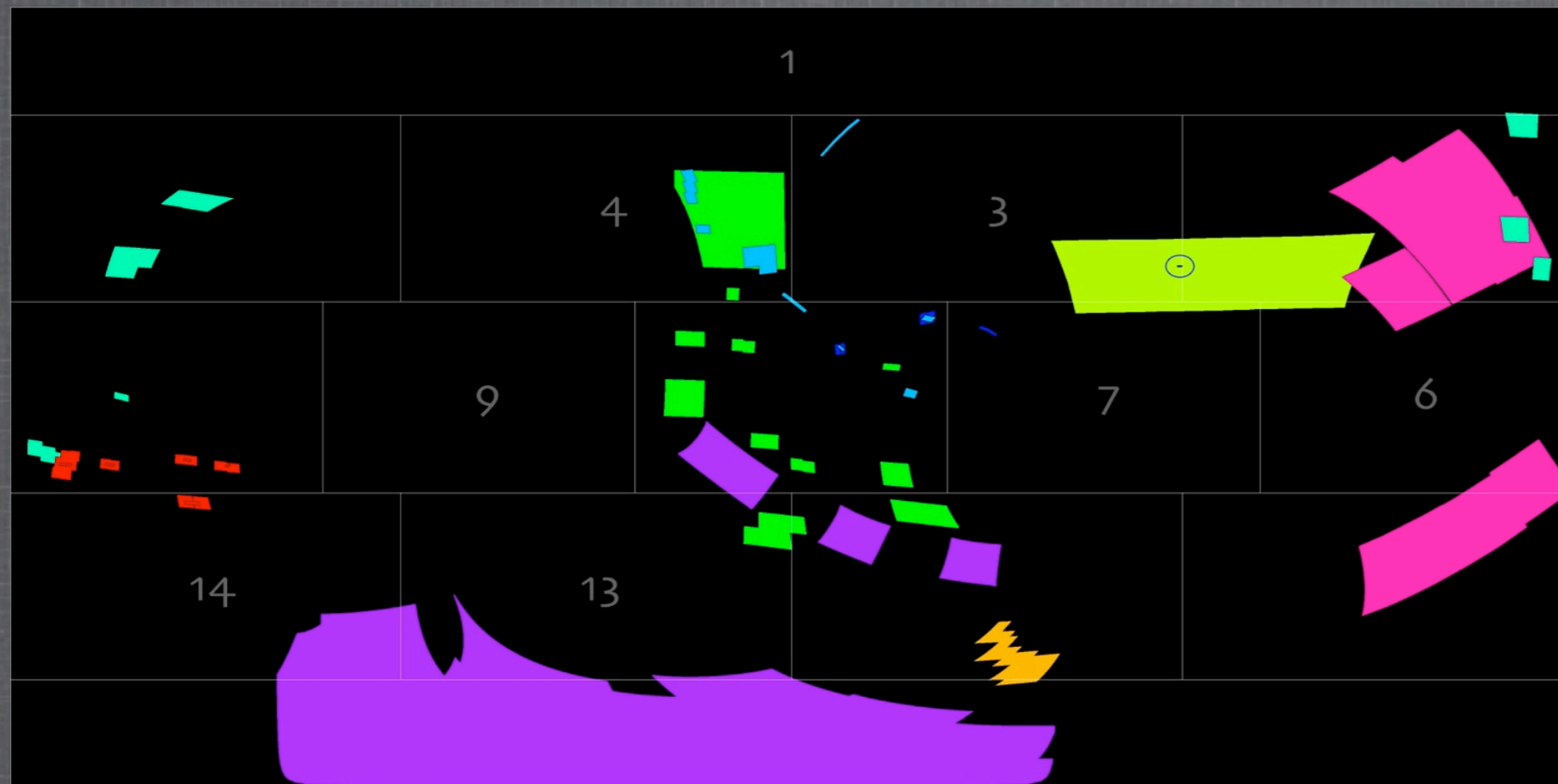
- *Introductory Texts*
- *Gazetteer*
- *Glossary*
- *Data Tables*
- *Suppl. Readings*
- *Index Maps ...*

Index maps of **all** images
better than 1 km resolution



Index maps of **all** images better than 100 m resolution
(note the preponderance of Black)

Stereo Atlas of the Galilean Satellites
- to be published separately -



ATLAS OF THE GALILEAN SATELLITES

- *global 1-km maps*
- *mapping quadrangles for each satellite*
- *ALL high resolution image mosaics*
- *lots of fun other stuff*

a key mapping tool as we prepare to Return to the Jupiter System
available in bookstores Winter 2009

