

# Planetary Science R&A Q&A



Thomas S. Statler  
NASA, Planetary Science Division  
January 11, 2017

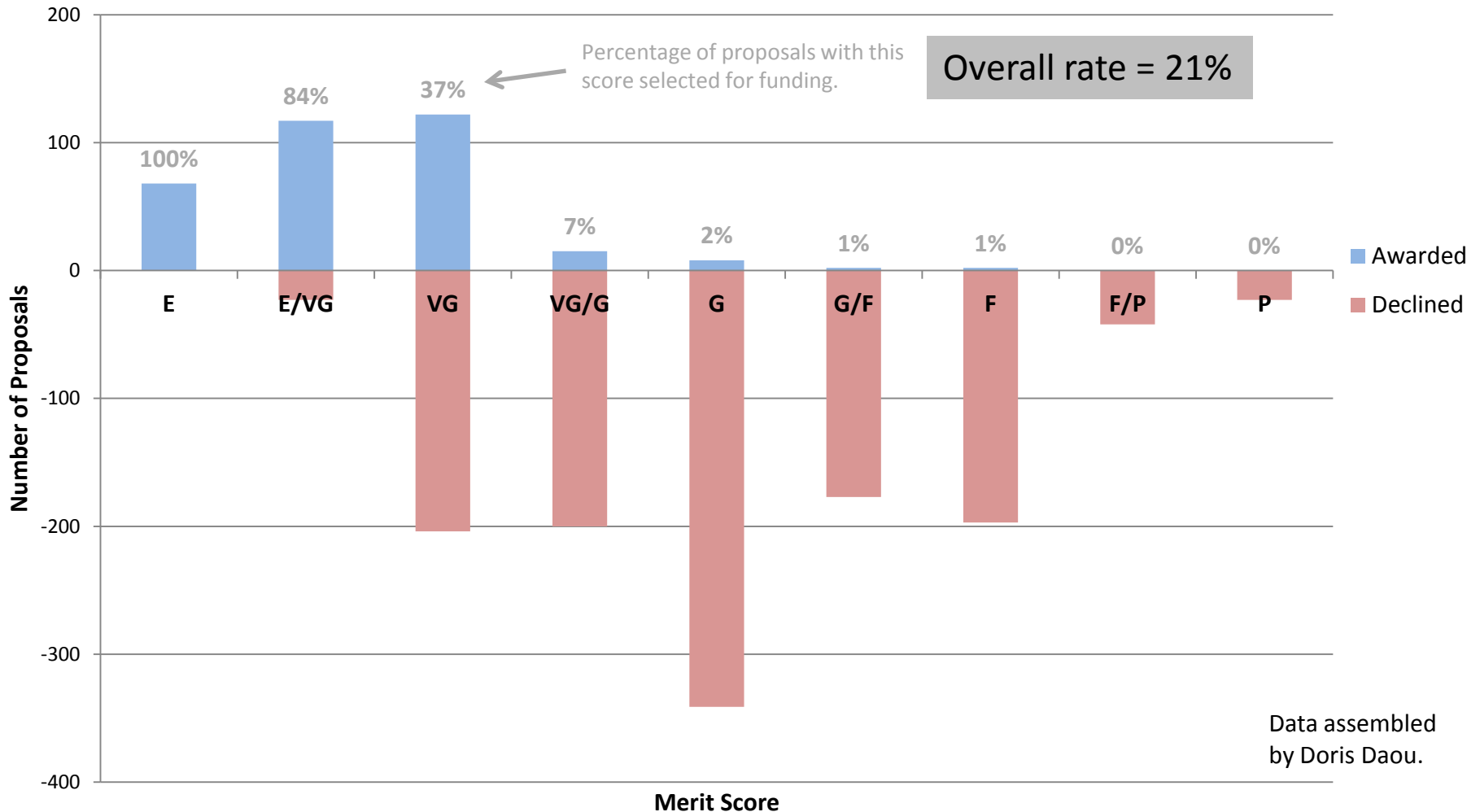
Presentation for SBAG

# Research and Analysis Program

# PSD R&A ROSES 16 Deadlines

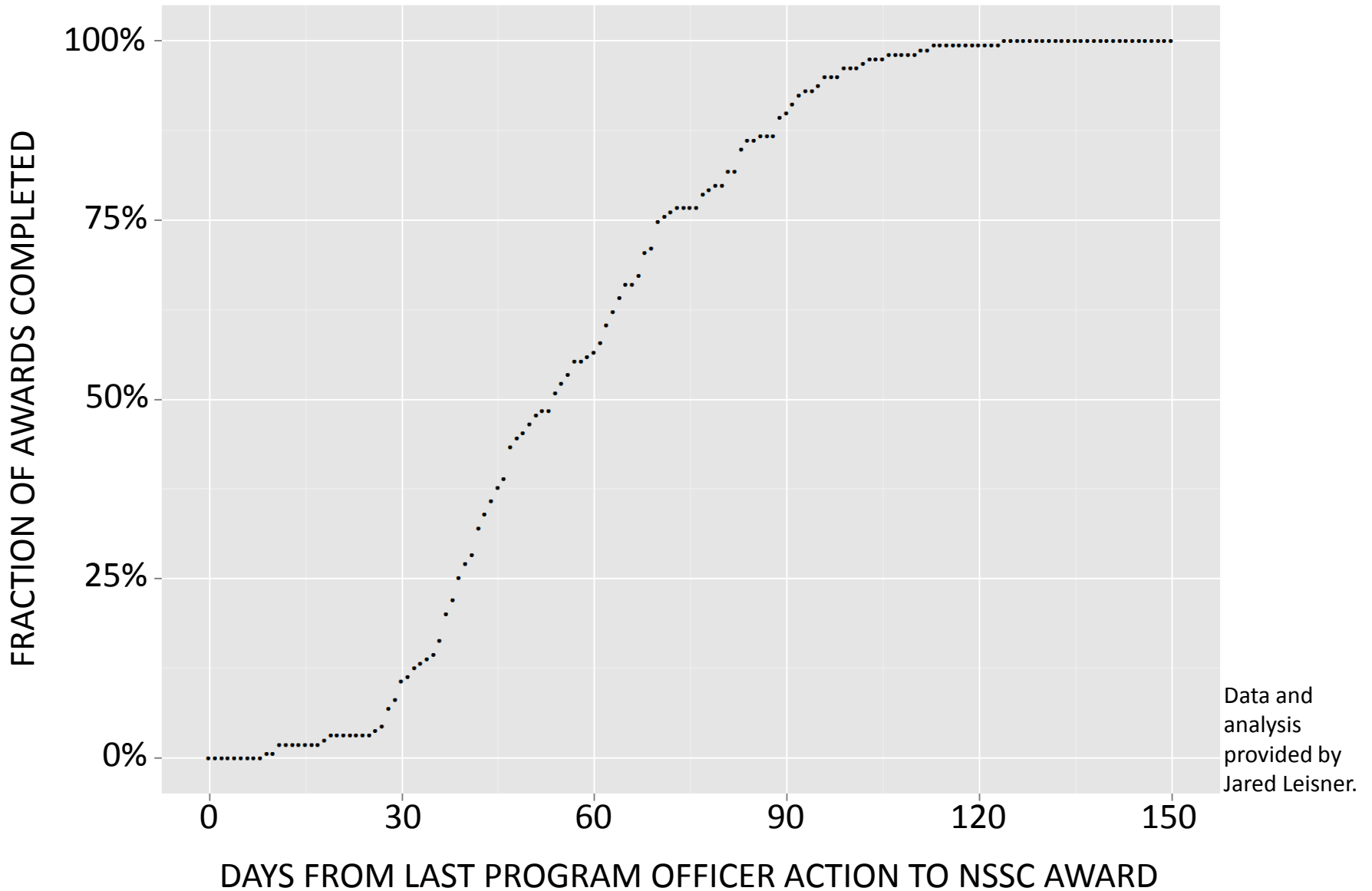
Program Name	Step-1 Due Date	Step-2 Due Date
Exoplanets (XRP)	<i>03/29/2016</i>	<i>05/26/2016</i>
Emerging Worlds (EW)	<i>03/31/2016</i>	<i>06/03/2016</i>
Cassini Data Analysis (CDAPS)	<i>04/06/2016</i>	<i>06/16/2016</i>
Solar System Obs. (SSO)	<i>04/08/2016</i>	<i>06/10/2016</i>
MatISSE	<i>04/21/2016</i>	<i>06/21/2016</i>
Laboratory Analysis of Returned Sample (LARS)	<i>04/22/2016</i>	<i>06/24/2016</i>
Planetary Data Archiving, Resto, Tools (PDART)	<i>05/13/2016</i>	<i>07/15/2016</i>
Exobiology (EXOB)	<i>05/20/2016</i>	<i>07/22/2016</i>
Concepts for Ocean Worlds Life Detection Tech (COLDTech)	<i>06/17/2016</i>	<i>08/12/2016</i>
Planetary Protection Research (PPR)	<i>06/24/2016</i>	<i>09/02/2016</i>
Planetary Sci./Tech. Through Analog Research (PSTAR)	<i>07/22/2016</i>	<i>09/23/2016</i>
Mars Data Analysis (MDAP)	<i>08/26/2016</i>	<i>09/30/2016</i>
Lunar Data Analysis (LDAP)	<i>09/30/2016</i>	<i>10/28/2016</i>
PICASSO	<i>09/14/2016</i>	<i>11/14/2016</i>
Discovery Data Analysis (DDAP)	<i>09/08/2016</i>	<i>11/17/2016</i>
Habitable Worlds (HW)	<i>11/18/2016</i>	01/20/2017
Solar System Workings (SSW)	<i>11/17/2016</i>	02/23/2017

# A Selection Metric



Shown are proposals submitted to ROSES-2014, including all core programs (EW, SSW, HW, SSO, EXO) and all DAPs (MDAP, DDAP, LDAP, CDAPS).

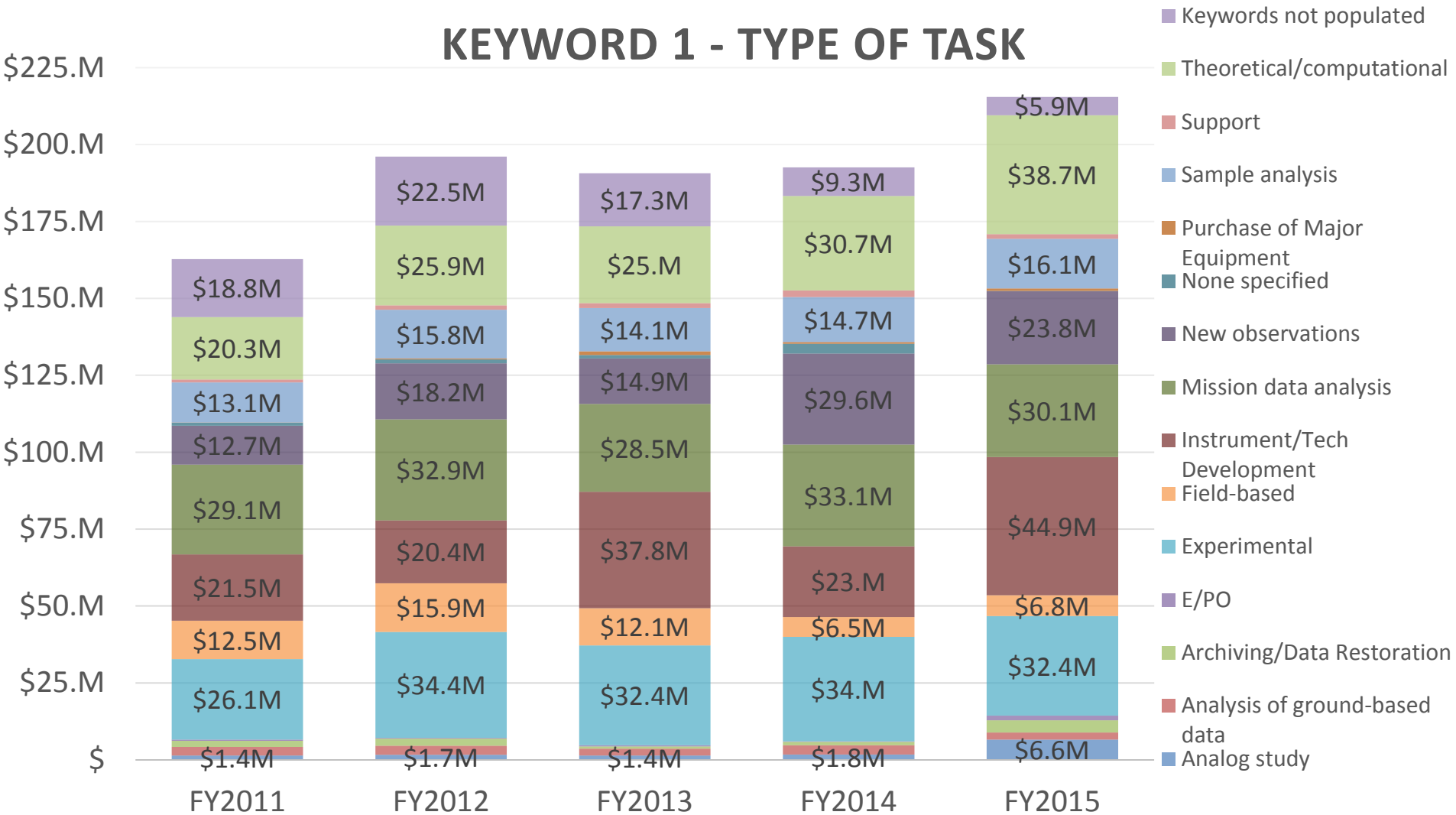
# The speed of money



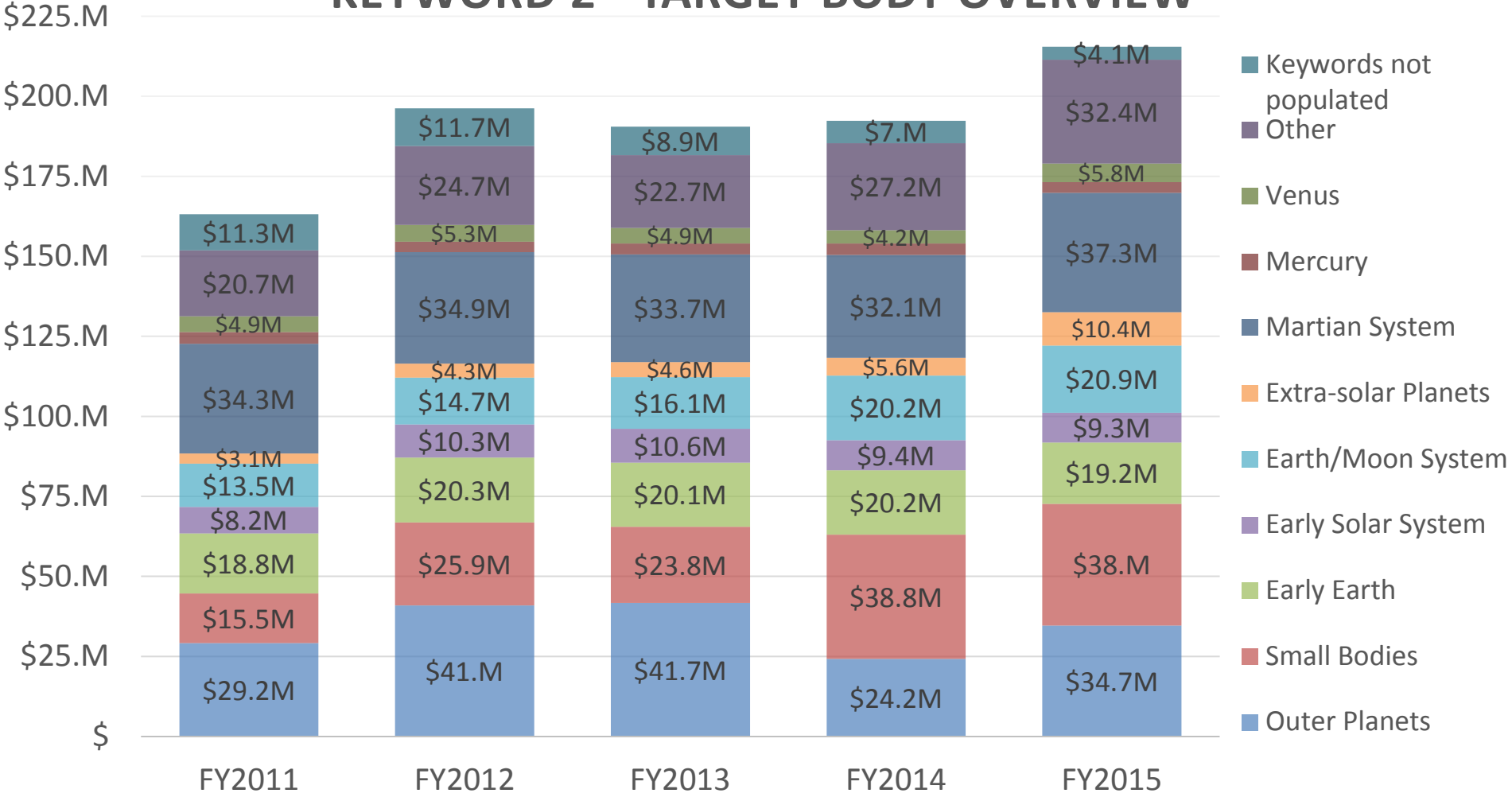
# Keyword Analysis

- Analysis of keyword distribution, 2011-2015 for categories:
  - Type of Task (keyword category 1)
  - Object(s) of Study (keyword category 2)
  - Science Discipline (keyword category 3)
- Analysis includes:
  - R&A awards, including NAI CAN awards
  - Data Analysis Programs
  - Participating Scientist and Guest Investigator Programs
- Analysis excludes:
  - Support activities
  - Facilities (e.g. RPIFs, AVGR, GEER, PAL, RELAB, ...)
- Caveats
  - If more than one keyword was used within any category, approved amount was equally divided between keywords
  - Return rate varied from year to year, portfolio to portfolio, and keyword category to keyword category
  - Keywords might have been used inconsistently between program officers

# KEYWORD 1 - TYPE OF TASK

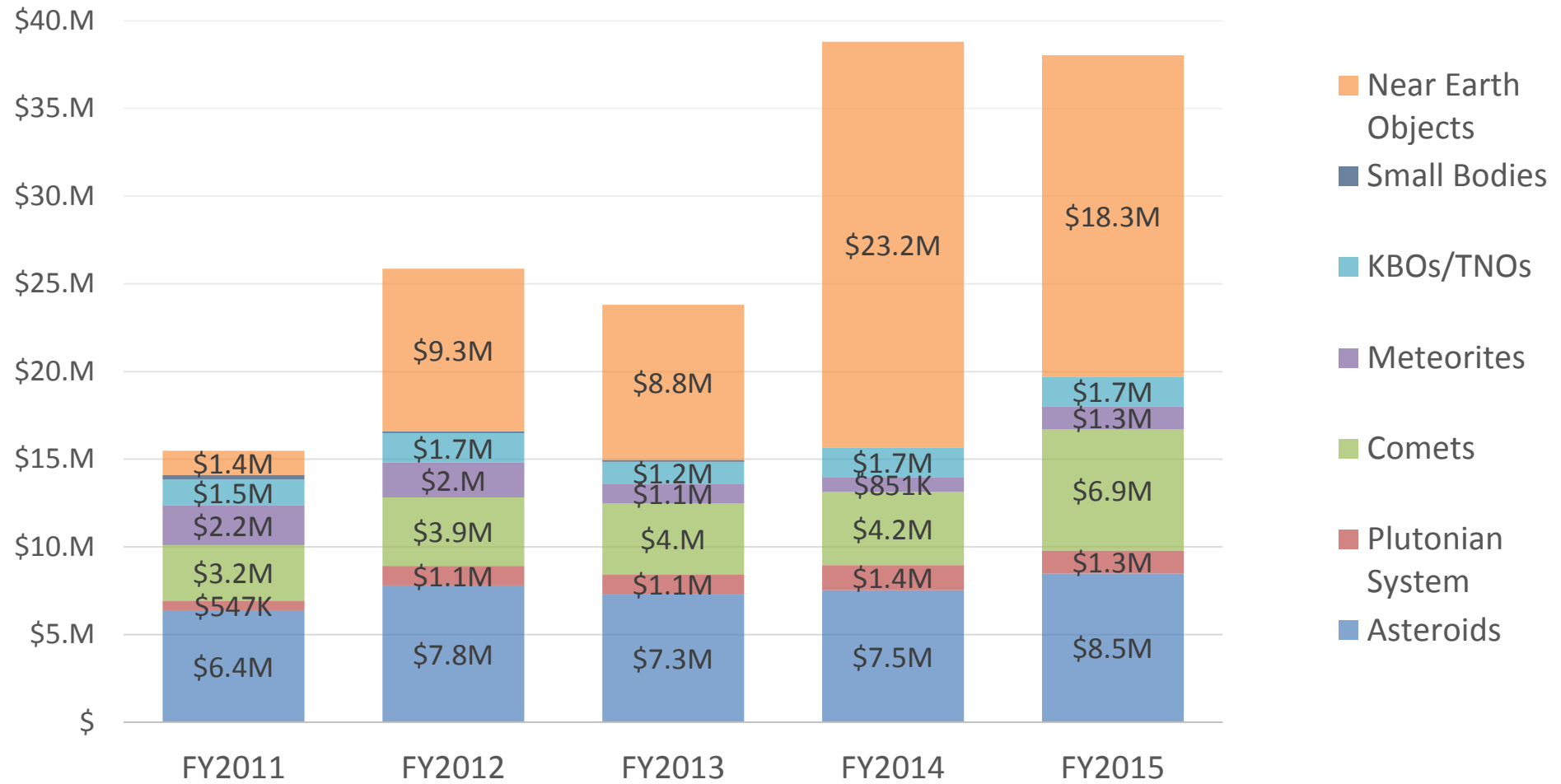


# KEYWORD 2 - TARGET BODY OVERVIEW

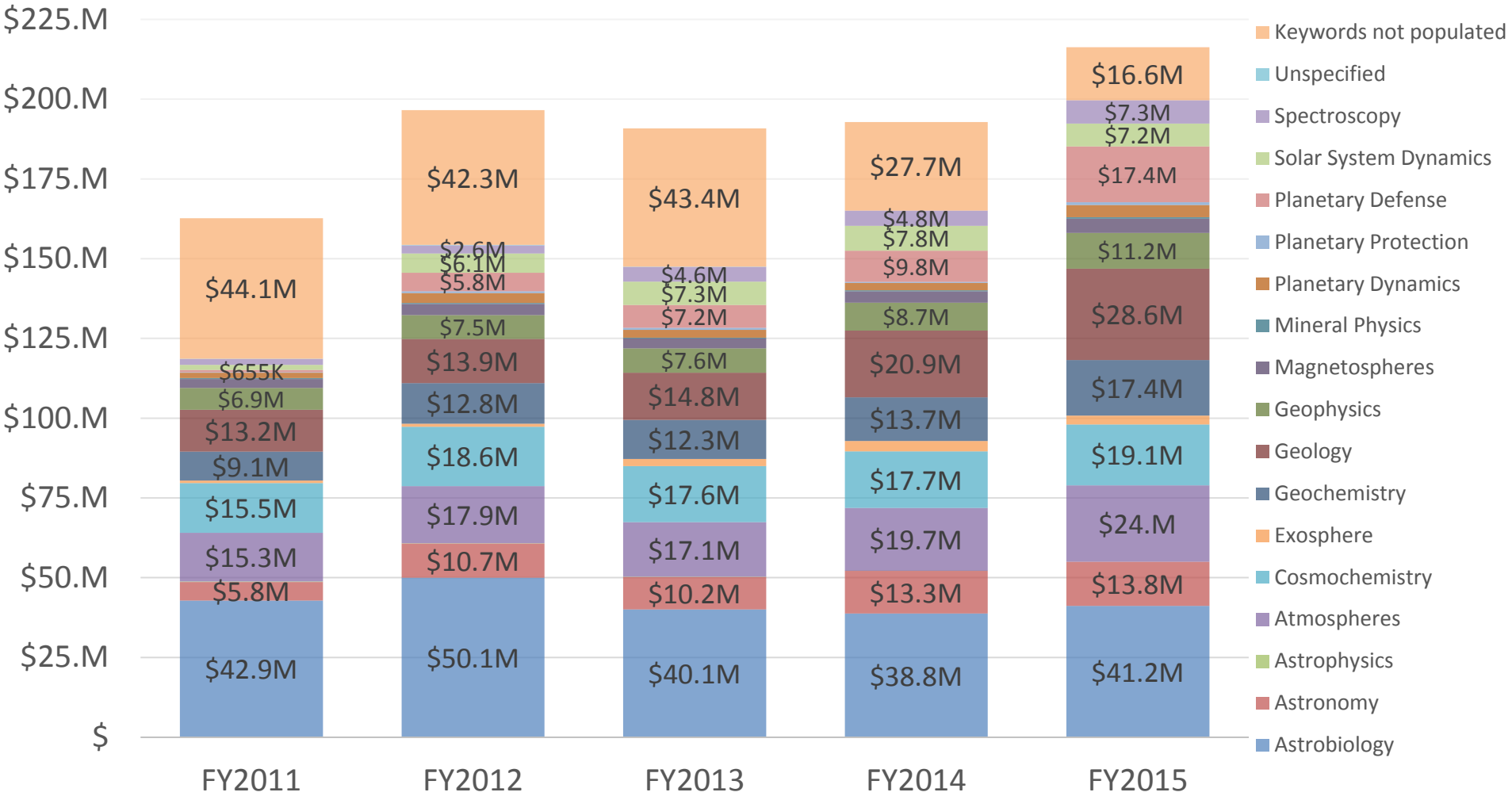




# SMALL BODIES BREAKOUT



### KEYWORD 3 - SCIENCE DISCIPLINE

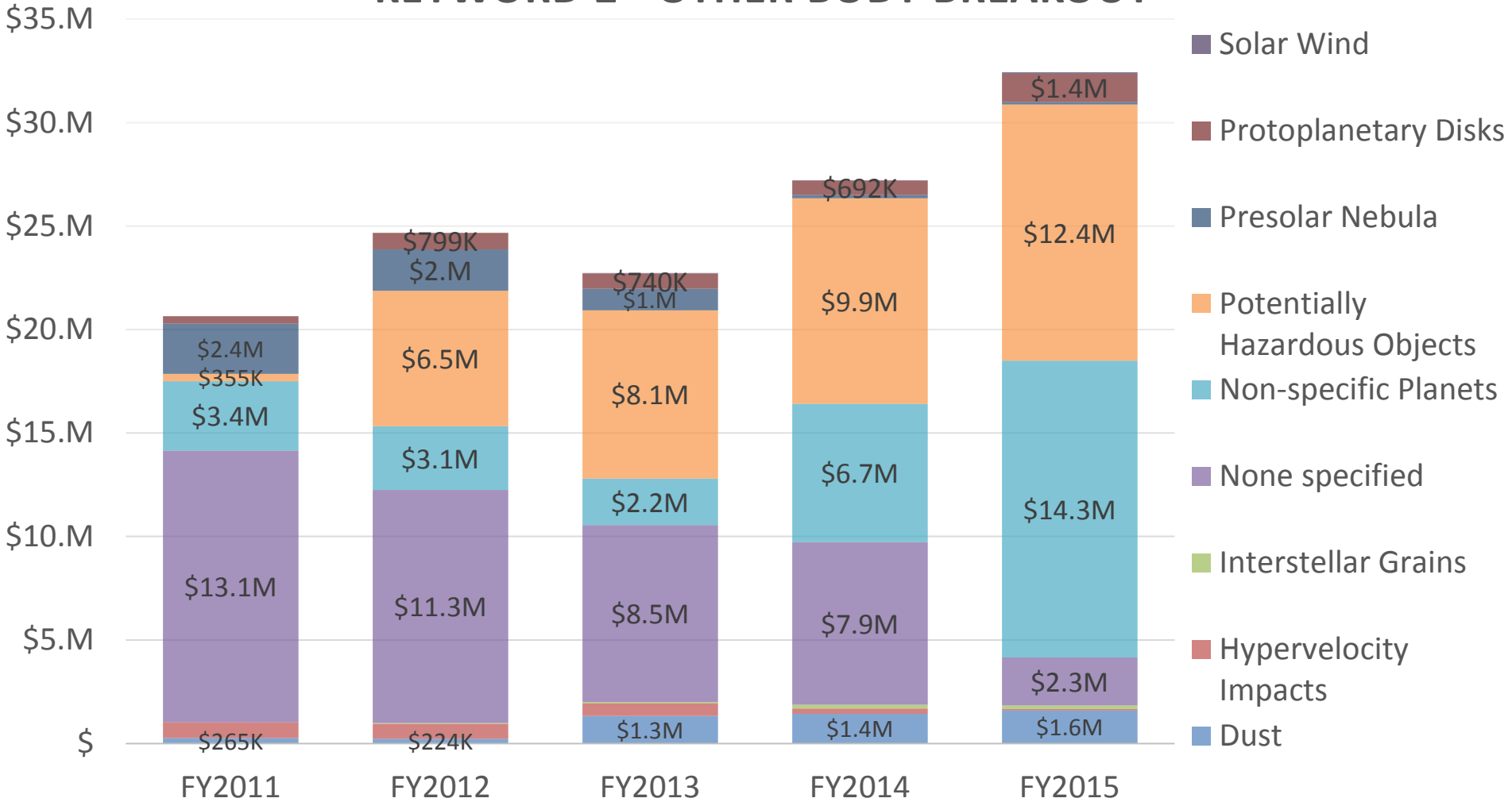


Questions?

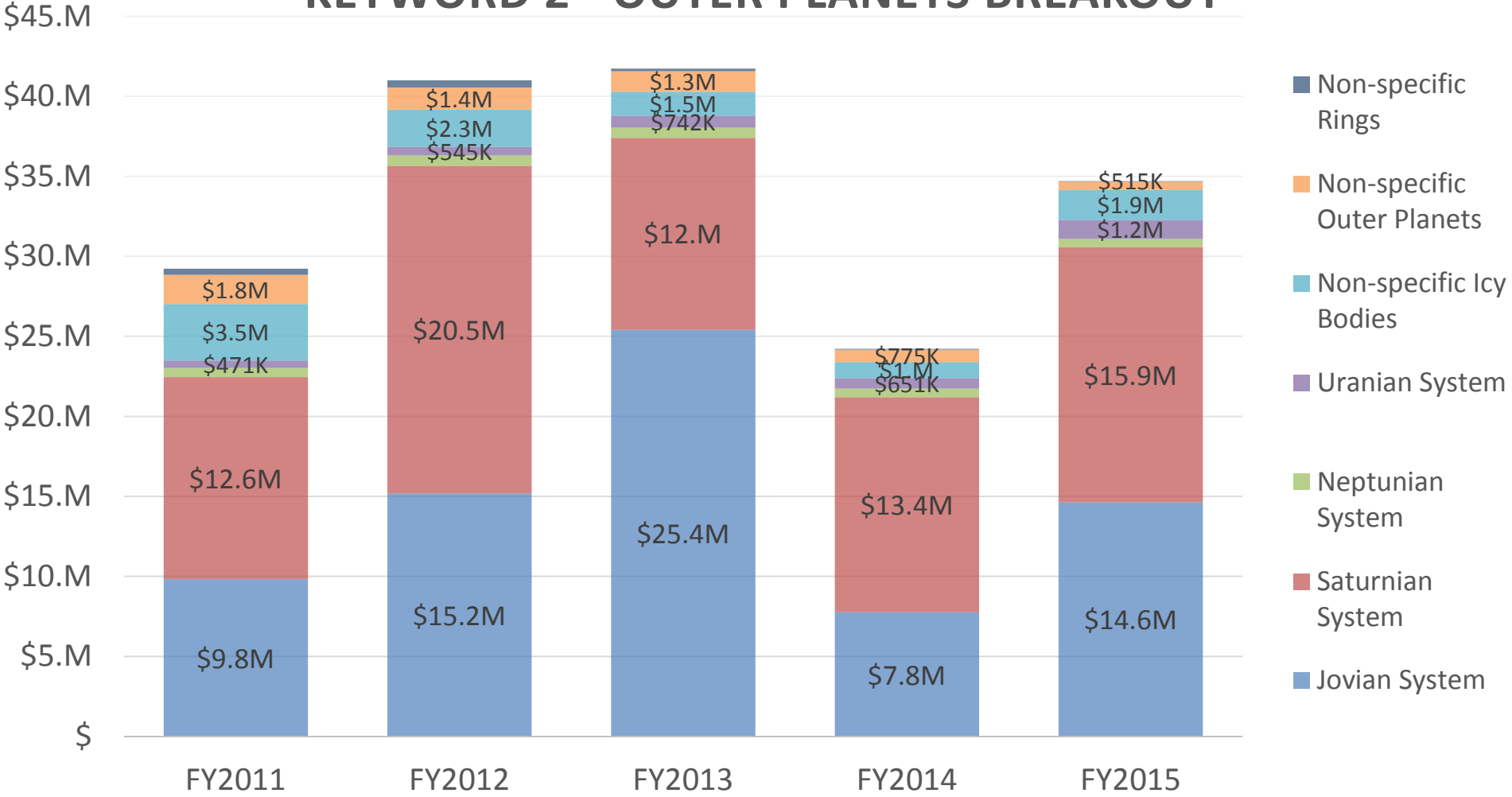


**BACKUPS**

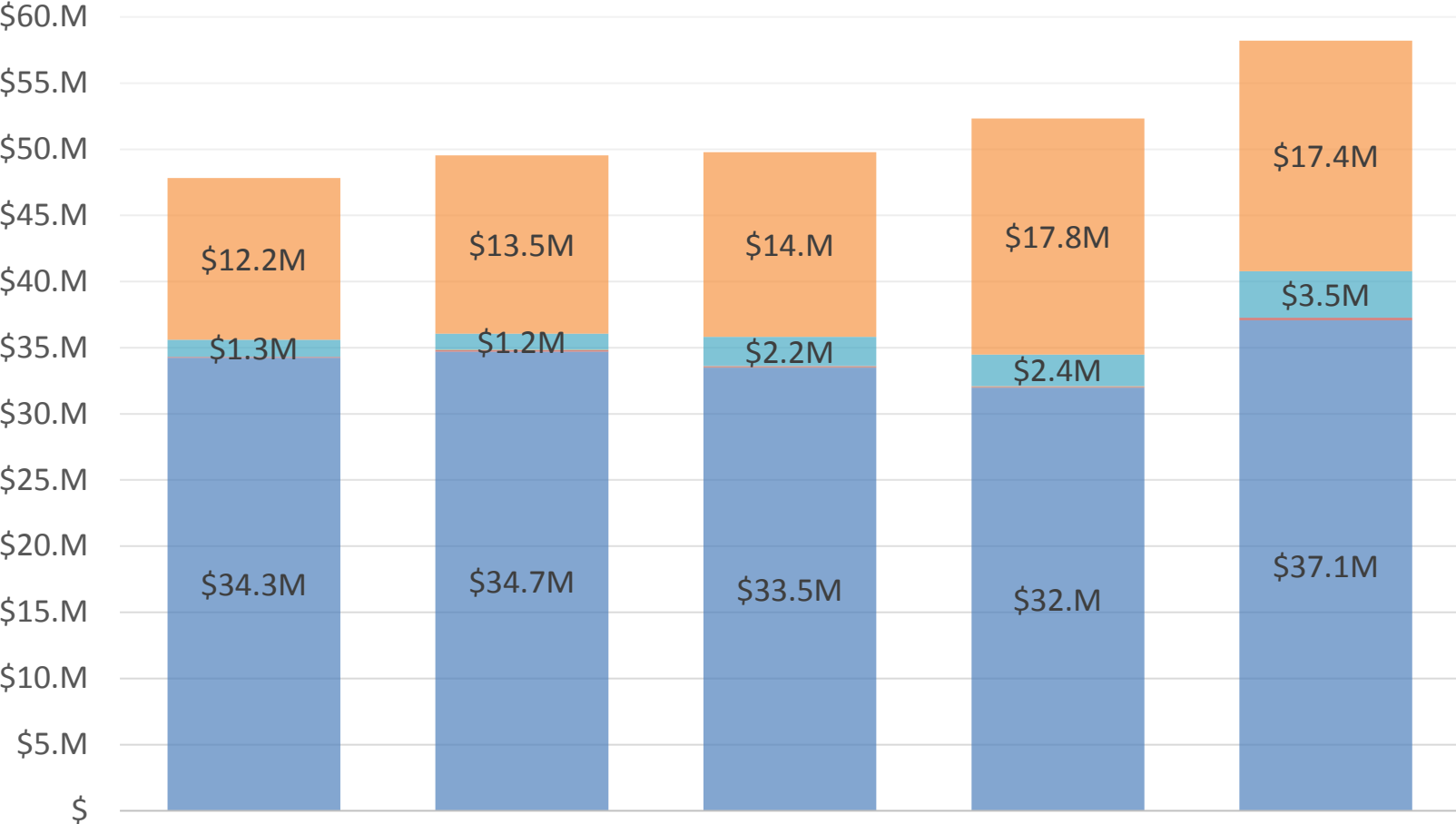
## KEYWORD 2 - OTHER BODY BREAKOUT



# KEYWORD 2 - OUTER PLANETS BREAKOUT



# KEYWORD 2 - EARTH, MARS SYSTEMS



- Moon
- Earth
- Deimos
- Phobos
- Mars Moons
- Mars