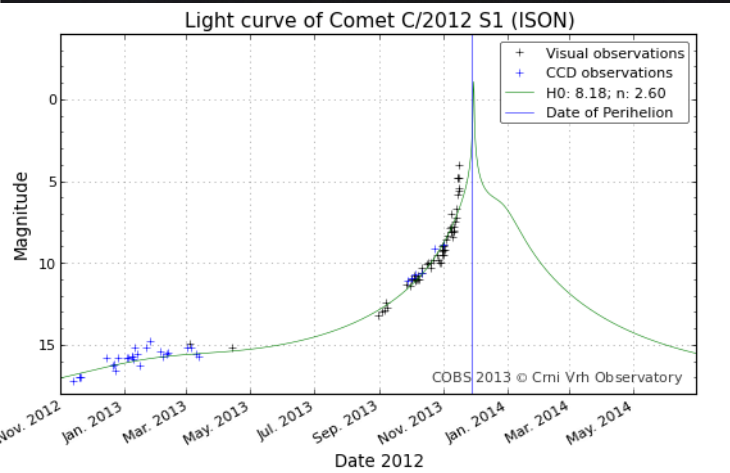


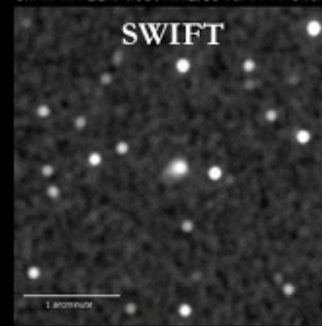
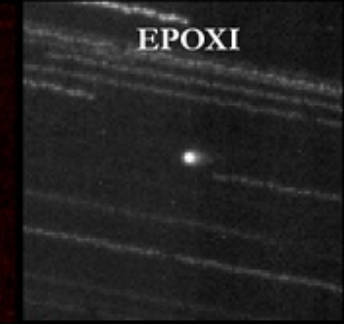
Comet ISON as of 11/19/2013. Passing Mercury, $Q_{H_2O} > 1e29$ mol/sec, $[V] < 5$. $R_{nuc} < 0.8$ km comet outbursting but surviving, tail $> 1^\circ$. NASA CIOC continues to monitor & facilitate observations. www.isoncampaign.org



J. Lodriguss
11/15/13



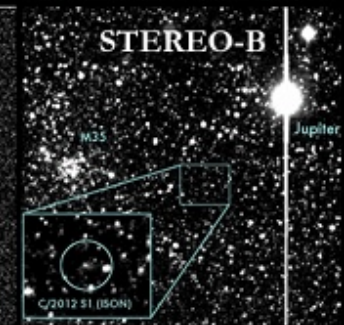
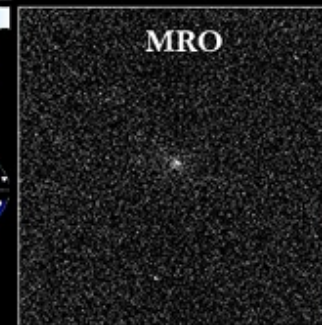
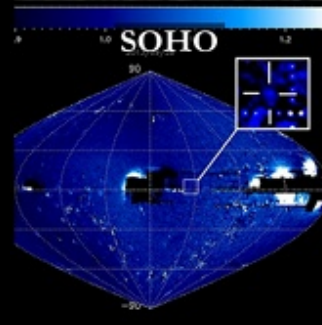
W.Skorupa
11/17/13



**C/2012 S1
ISON**

Eight spacecraft
and counting!

WWW.ISONCAMPAIGN.ORG



Including Chandra and MESSENGER, 10 s/c have now observed the evolution of the comet. Next up: SDO & MAVEN.