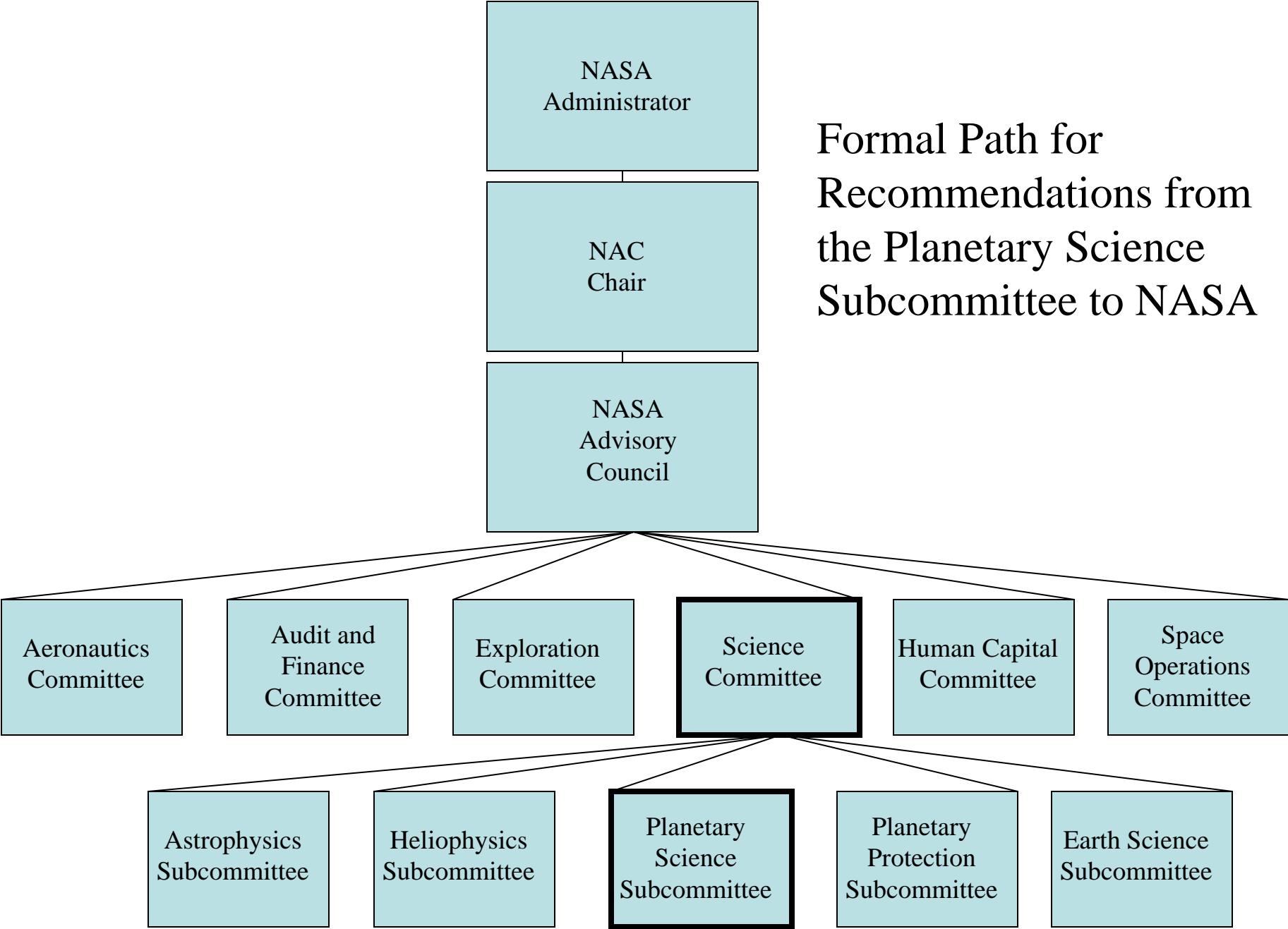


VEXAG Input into NASA's Planetary Science Subcommittee

Sean C. Solomon, Chair
Planetary Science Subcommittee
NASA Advisory Council

VEXAG Third Meeting
11 January 2007

Formal Path for
Recommendations from
the Planetary Science
Subcommittee to NASA



NAC Science Committee

Edward E. David, Jr., Chair

EED, Inc.

Lennard A. Fisk, ex officio

University of Michigan

Owen K. Garriott

The University of Alabama in Huntsville

Bradley L. Jolliff

Washington University

Mark S. Robinson

Arizona State University

S. Alan Stern

Southwest Research Institute

Byron D. Tapley

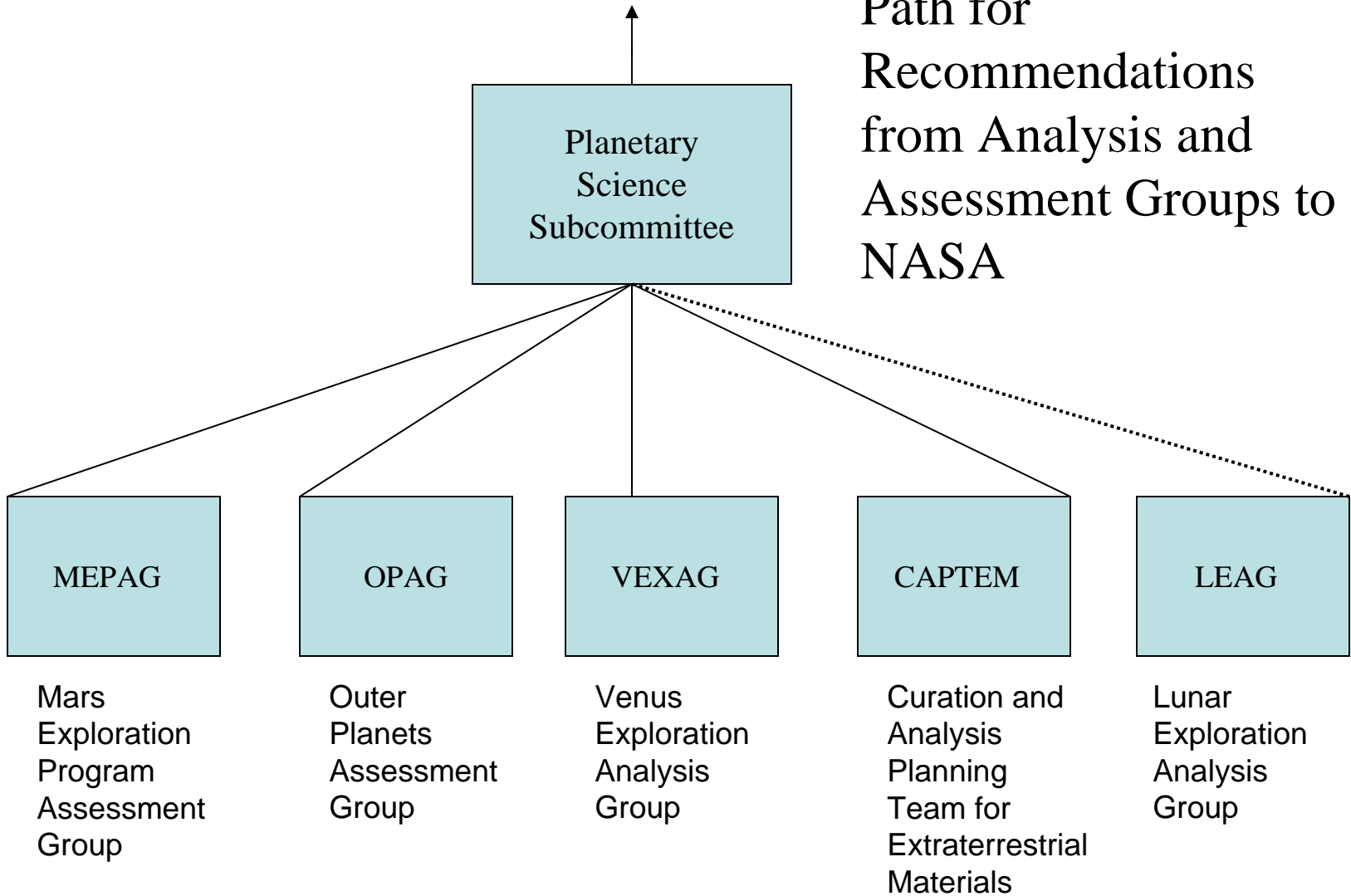
University of Texas at Austin

Neil DeGrasse Tyson

American Museum of Natural History

To NAC

Path for
Recommendations
from Analysis and
Assessment Groups to
NASA



Planetary Science Subcommittee Membership

Sean Solomon, Chair	Carnegie Institution of Washington
Michael New, Executive Secretary	NASA Headquarters
Ariel Anbar	Arizona State University
Ray Arvidson, MEPAG Chair	Washington University
Frances Bagenal, OPAG Chair	University of Colorado, Boulder
Lars Borg	Lawrence Livermore National Laboratory
Robin Canup	Southwest Research Institute
Patricia Dickerson	University of Texas, Austin
Vicky Hamilton	University of Hawai'i
James Head	Brown University
Bryan Hynek	University of Colorado, Boulder
Janet Luhmann, VEXAG Co-Chair	University of California, Berkeley
Victoria Meadows	California Institute of Technology
Clive Neal, LEAG Chair	University of Notre Dame
Charles Shearer, CAPTEM Chair	University of New Mexico
Arthur Snoke	University of Wyoming
Lawrence Taylor	University of Tennessee, Knoxville
Hal Weaver	The Johns Hopkins Applied Physics Laboratory
plus 2-3 open positions	

Issues for PSS

- Agenda topics at PSS meetings are a mix of issues raised by NASA or NAC and issues raised by the PSS or the AGs
- Each AG reports at every PSS meeting, and some PSS action items are directed to one or more AGs
- Potential PSS issues of relevance to VEXAG:
 - Program balance within the Planetary Science Division
 - Nature of the Discovery and New Frontiers Programs
 - International cooperation
 - Technology investments needed

PSS Meetings

- All PSS meetings are open, and most precede meetings of the NAC

3-4 May 2006

Washington, DC*

6-7 July 2006

Washington, DC*

25-26 September 2006

Boulder, CO

*Meetings coincided with meetings of other NAC science subcommittees

- Next meeting precedes NAC Lunar Science Workshop

26 February - 2 March 2007

Tempe, AZ

- PSS reports and presentation materials are public documents:

http://science.hq.nasa.gov/strategy/NAI_sci_subcom/planetary.html