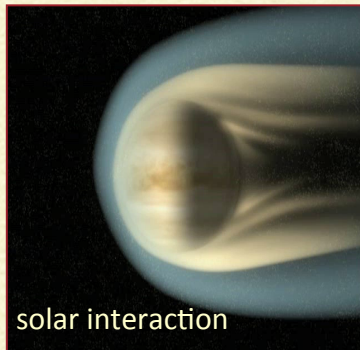
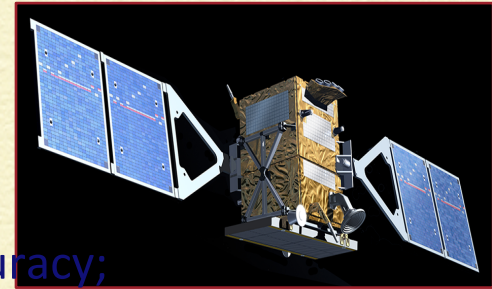




EnVision's primary aim is to determine *rates of change* and their causes: solar, atmospheric and geological. At its core is an InSAR system that will:

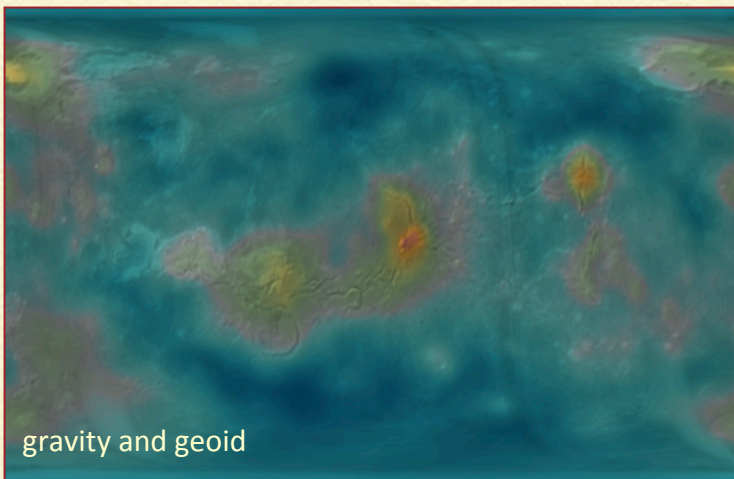
- ◆ Obtain repeated 30-m resolution InSAR imaging;
- ◆ Produce interferometric baseline DEMs with millimetric vertical accuracy;
- ◆ Detect surface elevation changes of *a few mm* over a 5 year period;
- ◆ Estimate rates of weathering and surface alteration from InSAR decoherence data.



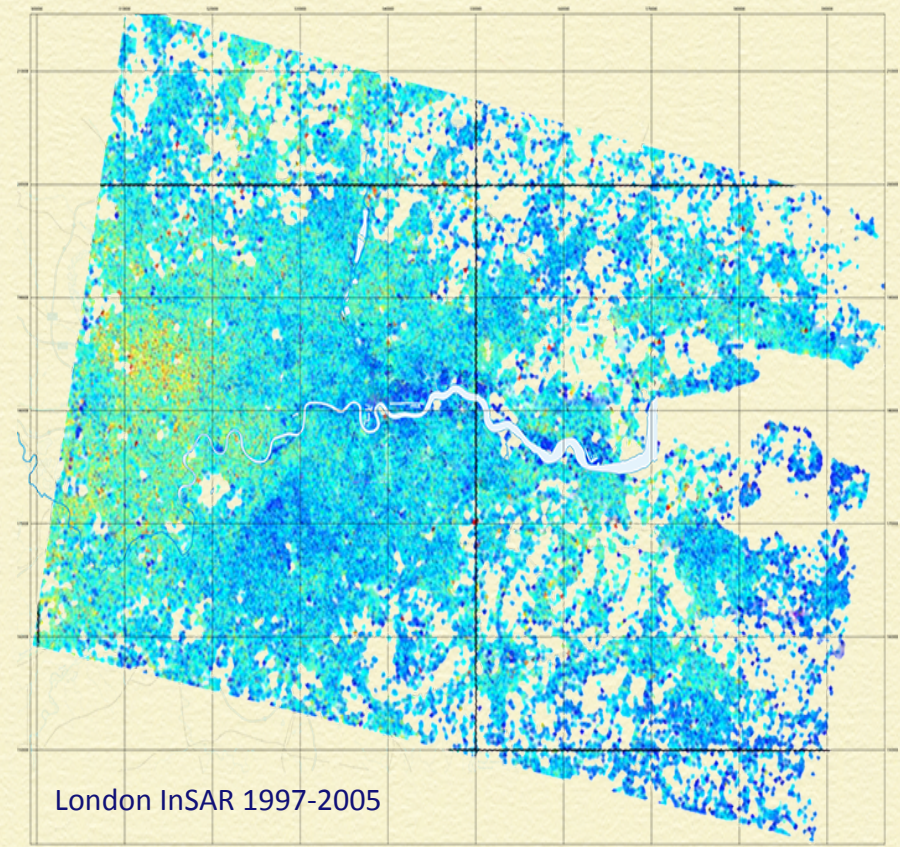
solar interaction



LIDAR



gravity and geoid



London InSAR 1997-2005