

ROSES Selection Data

Max Bernstein

NASA Planetary Science Division

VEXAG Meeting #14

November 29, 2016

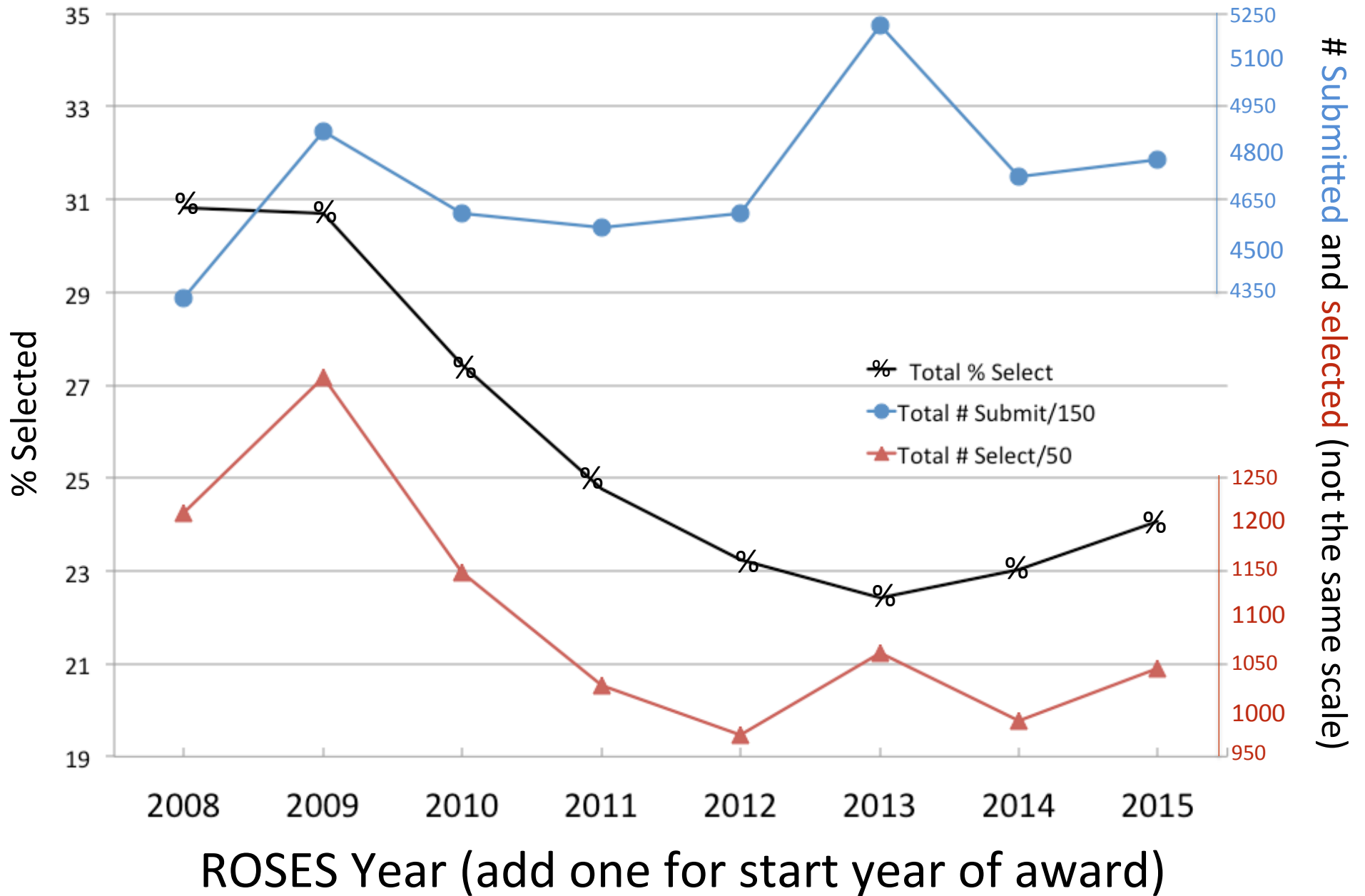
ROSES selection data plots, with caveats

These plots were made from the data in the spreadsheet from <https://science.nasa.gov/researchers/sara/grant-stats> with some caveats:

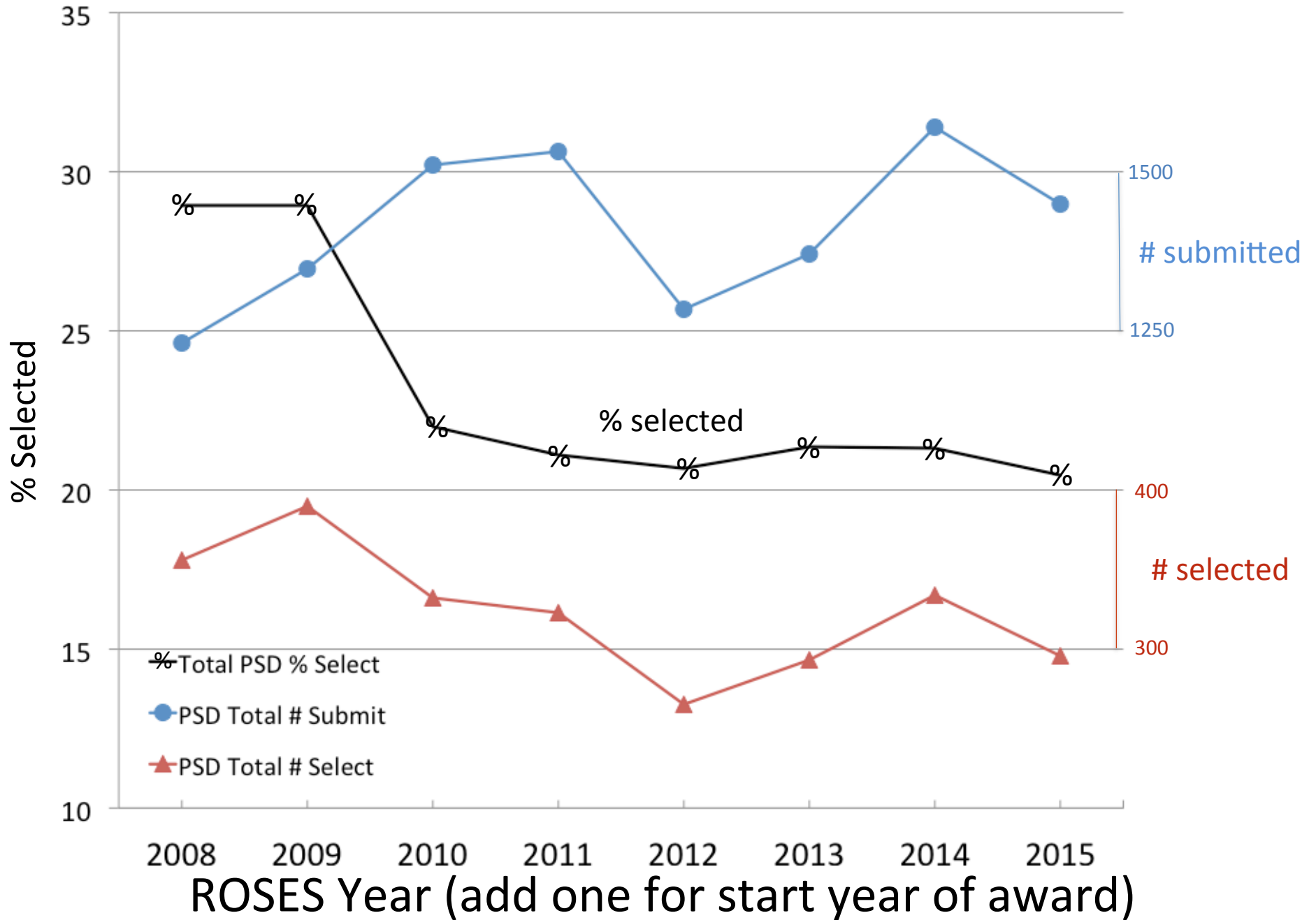
1. In general Step-1 proposals are not included. Exceptions are those programs where the Step-1 is binding, e.g., Land Cover/Land Use Change.
2. The Exoplanet Research Program is cross division between Astro and Planetary and while its clear how many selections derive from each division (based on who paid) its less clear how many submitted proposals to attribute to each division, so I have just assigned them proportionally. Not perfect, but a reasonable approximation.
3. In these plots the left axis is the % selected, so that is directly linked to the black line. The # submitted and selected are *not* on the same scale. To calibrate, refer to the spreadsheet of absolute numbers or the blue and red right axes if given.
4. The X axis is ROSES year, not fiscal year or calendar year. The most recent year is ROSES-2015, which corresponds to grants that began in 2016.
5. The ROSES-2015 data is preliminary, I don't have final selection numbers for all ROSES-2015 programs (e.g., Planetary Protection) but its pretty close.
6. Other sources of uncertainty in the data (reasons why my data may differ slightly from that presented by divisions) include: how non-compliant proposals were counted (submitted and rejected or returned without review), how partial selections and or pilot studies were counted, and additional late selections by the divisions of which I am unaware.

Max Bernstein R&A Lead for SMD: sara@nasa.gov

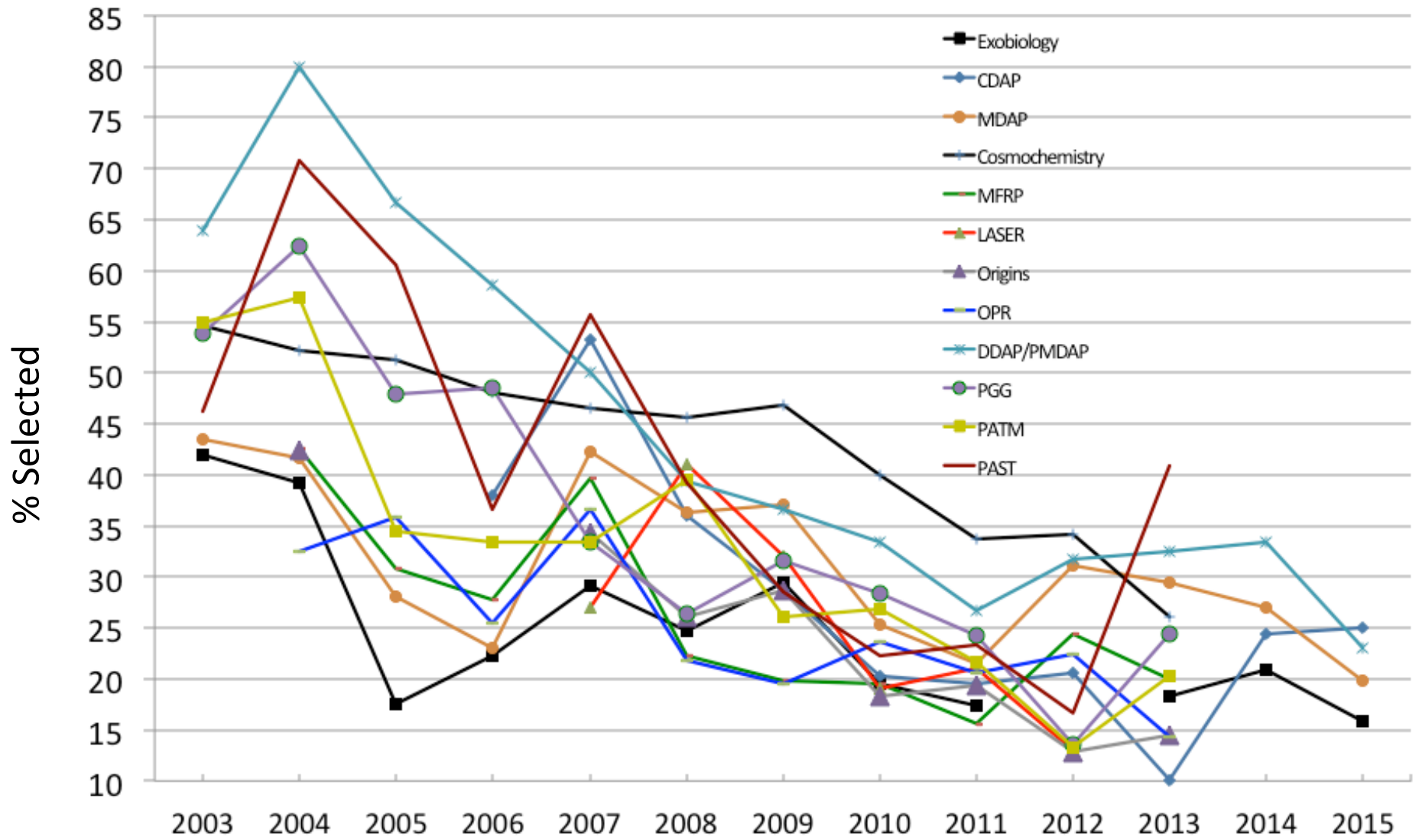
ROSES Submission and Selection Data – All of SMD



ROSES Submission and Selection Data - Planetary

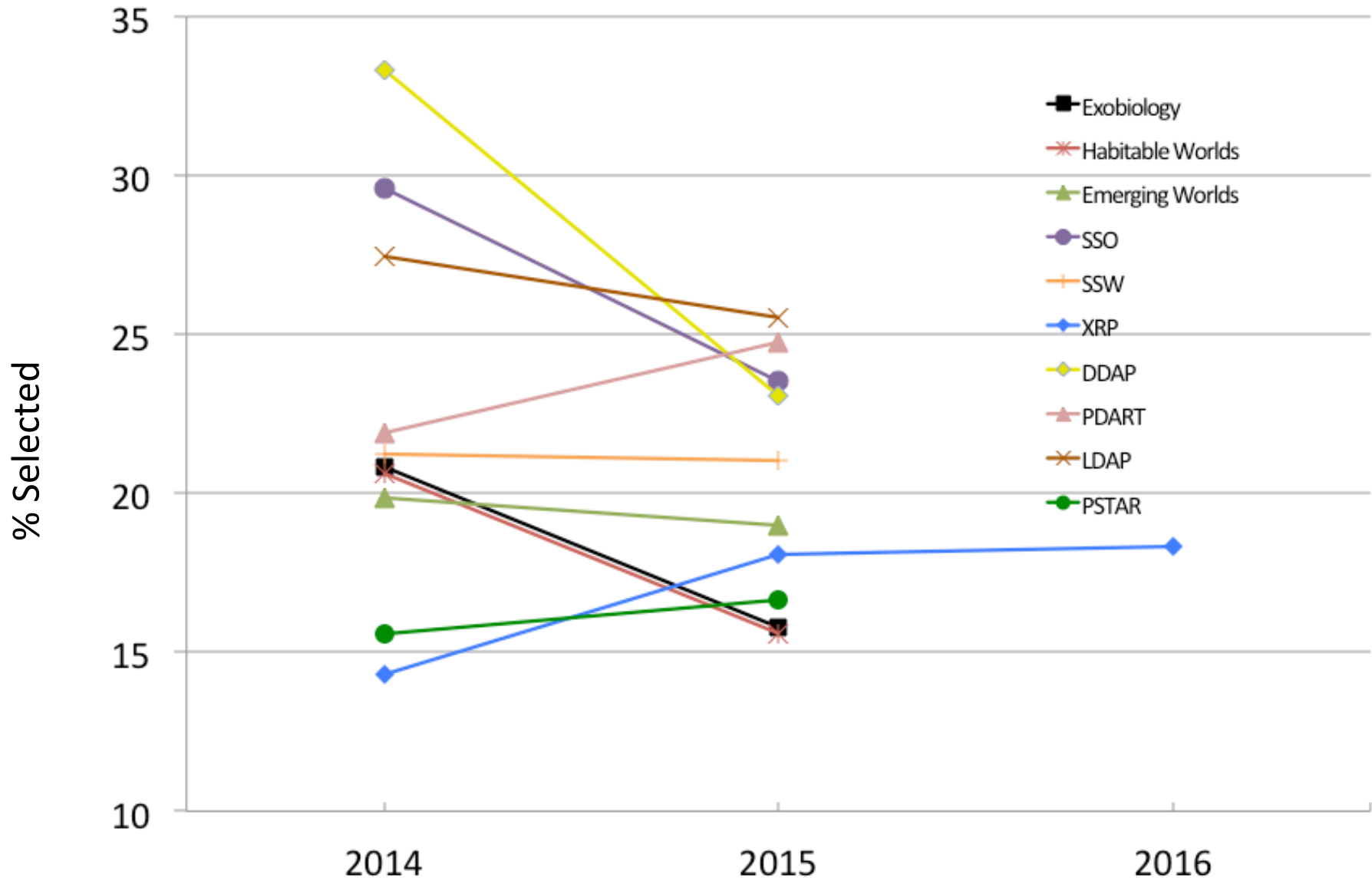


Planetary Division- Historical Programs



ROSES Year (add one for start year of award)

Planetary Division- New Programs



ROSES Year (add one for start year of award)